

Price Bulletin

2019



GOVERNMENT OF MEGHALAYA
DIRECTORATE OF ECONOMICS AND STATISTICS
MEGHALAYA, SHILLONG

PREFACE

Price Bulletin 2019, the 14th annual bulletin in the series of Price Bulletin brought out by the Directorate of Economics and Statistics, Meghalaya, presents publication containing the monthly average retail prices of both urban and rural centres which were identified for price collection. The monthly average retail prices of selected commodities in all District Headquarters and the wholesale prices in the state during the year 2019 is also included. It is an attempt to present the price trend of some of the commodities during the year and also the monthly variation. However, it may be noted that these are not the actual price data but the average of prices of various centres for a particular month or year. The year's data is the average of the twelve – month period of the year.

This publication has been compiled by the staff of the price section based on the reports provided by different District Headquarters and Block Officials, of the Directorate. Any suggestions for the improvement in the coverage and presentation of data would be greatly acknowledged.

Dated, Shillong,
The 9th November 2020.

(A. M. LALOO)
Director
Economics & Statistics
Meghalaya, Shillong

CONTENTS

	Page No.
Chapter – 1 Introduction and Background	1 – 2
<i>Introduction</i>	1
<i>Limitations of the Data</i>	3
Chapter – 2 Retail Prices of Essential Commodities	5 – 24
<i>Fig. 2.1 Annual Average Retail Prices of 6 (Six) Essential Commodities in Meghalaya for the last five years</i>	6
<i>Table 2.1 Annual Average Retail Prices of 6 (Six) Essential Commodities in Meghalaya for the last five years</i>	6
<i>Table 2.2 Annual Average Retail Prices of Essential Commodities in Meghalaya for the last five years (2015 to 2019)</i>	7
<i>Table 2.3 Monthly Average Retail Prices of Essential Commodities in Urban Centres during the year 2019</i>	8 – 11
<i>Table 2.4 Annual Average Retail Prices of Essential Commodities in Rural Centres during the year 2019</i>	12 – 16
<i>Table 2.5 Monthly Average Retail Prices of Selected Commodities from all District Headquarters during the year 2019</i>	17 – 23
Chapter – 3 Wholesale Prices of Essential Commodities	25 – 30
<i>Table 3.1 Monthly Average Wholesale Prices for Food and Non Food items in Meghalaya during the Year 2019.</i>	26 – 27
<i>Table 3.2 Monthly Average Wholesale Price of Selected Commodities in Shillong for the Year 2019.</i>	28 – 29
Chapter – 4 Consumer Price Index	31 – 51
<i>Table 4.1 Consumer Price Index Numbers for Industrial Workers – All India</i>	33
<i>Table 4.2 Consumer Price Index Numbers for Agricultural Labourers</i>	34
<i>Table 4.3 Consumer Price Index Numbers for Rural Labourers</i>	35
<i>Table 4.4 Consumer Price Index Numbers for Rural, Urban and Combined (Rural + Urban) of Meghalaya, North Eastern States and All India During the Calender Year 2019</i>	36 – 37

<i>Table 4.5</i> <i>Consumer Price Index Numbers for Rural, Urban and Combine (Rural + Urban) of Meghalaya for the year 2019</i>	38
<i>Table 4.6</i> <i>Rural Consumer Price Index Numbers of Meghalaya and Rest of North East Indian States for the year 2019</i>	39
<i>Table.4.7</i> <i>Urban Consumer Price Index Numbers of Meghalaya and Rest of North East Indian States for the year 2019</i>	40
<i>Table 4.8</i> <i>Combine (Rural + Urban) Consumer Price Index Numbers of Meghalaya and North East India for the year 2019</i>	41
<i>Table 4.9</i> <i>Rural Consumer Price Index Numbers of North East India and Rest of India for the year 2019</i>	42
<i>Table 4.10</i> <i>Urban Consumer Price Index Numbers of North East India and Rest of India for the year 2019</i>	43
<i>Table 4.11</i> <i>Combine (Rural + Urban) Consumer Price Index Numbers of North East India and Rest of India for the year 2019</i>	44

INTRODUCTION

Collection and compilation of price statistics on food and non- food items is one of the regular work programme of the Directorate of Economics and Statistics. Wholesale and Retail prices are collected from selected centres in all the seven districts of the state. The price data are collected from open markets by the staff of the Directorate posted in the District Offices and the Sub- Inspector of Statistics posted in the community and Rural Development Blocks. The monthly average for each centre has been computed from the weekly and monthly price returns. Price statistics indicates the changes of general price level of essential commodities in the state.

The following are the price data collected and maintained by the Directorate to be incorporated in this publication.

- 1. Wholesale Prices:** - Wholesale prices on food and non-food items in Meghalaya are collected from 7 Urban Centres namely Shillong, Jowai, Nongstoin, Nongpoh, Tura, Williamnagar, Baghmara. Food items are collected on weekly basis while non-food items are collected on monthly basis.
- 2. (i) Retail Prices (Urban):** - Retail prices for urban areas are collected also from the 7 Urban Centres namely Shillong, Jowai, Nongstoin, Nongpoh, Tura, Williamnagar, and Baghmara. The price data are collected on weekly basis for food items including non food items under heading 2 (A) Fuel and Lighting and (B) Pan, Tobacco, etc. Others non food items are collected on monthly basis.
(ii) Retail Prices (Rural): - Retail prices from rural areas are collected on monthly basis for both food and non-food items from 22 selected Centres spread all over the state, namely, Ummulong, Mawphlang, Mawryngkneng, Pynursla, Mawsynram, Umsning, Mawkyrwat, Mawshynrut, Mawpyllun, Rongjeng, Songsak, Mendipathar, Rongsak, Barenggapara, Ampati, Dadengiri, Rongram, Chokpot and Ronggara, Mairang, Sohra and Khliehriat.
- 3. Consumer Price Index Numbers:** - The Consumer price Indices for Industrial Workers, Agricultural Labourers and Rural Labourers released for each month by the Labour Bureau, Shimla are presented in this Price Bulletin. Price Indices on Industrial Workers and Agricultural Labourers are useful for fixation and revision of wages for different categories of labourers in the State. Price Indices on Industrial Workers are also utilised for fixation/revision of dearness allowance of Government employees in the State. The new series of consumer Price Indices for All-India and States/UTs separately for Rural, Urban and Combined have been compiled by the Central Statistical Office in the Ministry of Statistics and Programme Implementation for the purpose of intra temporal Price comparison with effect from January, 2011 with 2010 as the Base year. The monthly indices for Rural, Urban and Combined for Meghalaya and other North Eastern States and All-India for the year 2019 have been presented in this publication. Lastly, the Consumer Price Index for Industrial Workers on New Base 2016=100 from September, 2020 has been launched by the Hon'ble Minister of State (I/C) for Labour & Employment, Government of India, Shri. Santosh Kumar Gangwar on 22nd October, 2020. As per practice, with the advent of new series, the old series is discontinued and price collection for 2001 series is stopped.

LIMITATIONS OF THE DATA

The price data as shown in the Price Bulletin are average prices of centres and months and hence do not reflect the actual price. Therefore, the usage of the information should be limited to that extent. In general, the price data of the commodities will only show the price trends over a period of time and should not be construed as the actual price of the commodities.

There are some centres which had reported prices of only 10 to 15 items out of the total 32 items of the Weekly Wholesale Prices for food and 5 to 7 items of non-food items for some period as the items were not available in those centres during a particular period.

Retail Prices
of
Essential
Commodities

Table 2.1

ANNUAL AVERAGE RETAIL PRICES OF ESSENTIAL COMMODITIES IN THE STATE FOR THE LAST FIVE YEARS (2015 TO 2019)

Sl.No.	Commodity	Unit	Growth Rate				
			2015	2016	2017	2018	2019
1	Rice	Kg	33.02	33.69	33.25	34.45	35.16
2	Masur Dal	Kg	91.18	94.94	84.48	70.31	69.67
3	Mustard Oil (Loose)	Ltr	104.38	105.46	104.82	105.43	106.55
4	Onion	Kg	44.30	28.84	34.84	36.84	46.31
5	Potato	Kg	18.77	23.82	19.90	24.02	23.00
6	Sugar	Kg	36.78	42.06	47.15	45.52	44.54

Calculated on the average of both Urban and Rural Prices

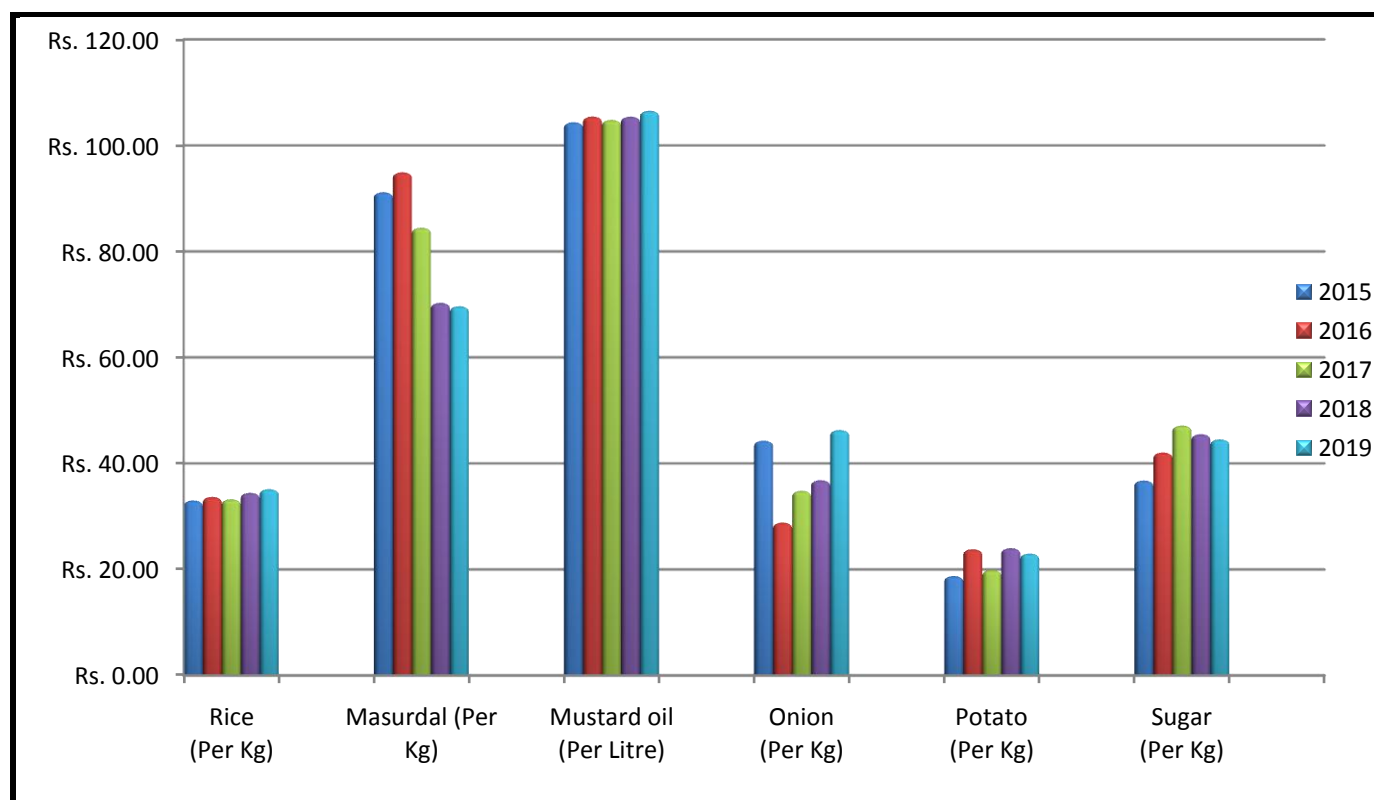


Fig. 2.1 Annual Average Retail Prices of Six Essential Commodities in Meghalaya

Table 2.2
Annual Average Retail Prices of Essential Commodities in the
State for the last five years (2015 TO 2019)

Sl. No.	Commodity	Unit	Growth Rate				
			2015	2016	2017	2018	2019
1	Rice	Kg	33.02	33.69 (2.03)	33.25 (-1.31)	34.45 (3.61)	35.16 (2.05)
2	Atta	Kg	26.06	25.01 (-4.03)	30.15 (20.55)	30.38 (0.76)	32.49 (6.94)
3	Moong Dal	Kg	108.70	112.88 (3.85)	100.86 (-10.65)	89.27 (-11.49)	92.12 (3.19)
4	Masur Dal	Kg	91.18	94.94 (4.12)	84.48 (-11.02)	70.31 (-16.77)	69.67 (-0.91)
5	Mustard oil (Loose)	Ltr	104.38	105.46 (1.03)	104.82 (-0.61)	105.43 (0.58)	106.55 (1.06)
6	Refined oil (Loose)	Ltr	105.76	95.20 (-9.98)	99.94 (4.98)	99.22 (-0.72)	101.05 (1.85)
7	Fish (Rohu)	Kg	183.24	195.16 (6.51)	195.01 (-0.08)	193.36 (-0.85)	197.74 (2.26)
8	Pork	Kg	220.18	223.81 (1.65)	240.41 (7.42)	255.95 (6.46)	265.84 (3.86)
9	Beef	Kg	221.78	238.91 (7.72)	250.57 (4.88)	267.63 (6.81)	282.74 (5.65)
10	Chicken (Broiler)	Kg	212.89	219.46 (3.09)	219.88 (0.19)	220.87 (0.45)	225.06 (1.90)
11	Egg (Farm)	Pair	11.55	11.85 (2.60)	12.31 (3.88)	12.87 (4.55)	13.21 (2.65)
12	Milk	Ltr	51.47	53.14 (3.24)	56.84 (6.96)	62.22 (9.47)	64.72 (4.03)
13	Salt	Kg	17.21	18.75 (8.95)	18.31 (-2.35)	18.07 (-1.31)	20.60 (14.03)
14	Onion	Kg	44.30	28.84 (-34.90)	34.84 (20.80)	36.84 (5.74)	46.31 (25.71)
15	Green Chillies	Kg	82.20	84.96 (3.36)	85.44 (0.56)	83.14 (-2.69)	102.07 (22.77)
16	Potato	Kg	18.77	23.82 (26.90)	19.90 (-16.46)	24.02 (20.70)	23.00 (-4.24)
17	Tomato	Kg	37.60	36.13 (-3.91)	43.50 (20.40)	36.65 (-15.75)	48.11 (31.26)
18	Cabbage	Kg	23.61	25.48 (7.92)	28.09 (10.24)	27.36 (-2.60)	30.07 (9.90)
19	Sugar	Kg	36.78	42.06 (14.36)	47.15 (12.10)	45.52 (-3.46)	44.54 (-2.15)
20	Cauliflower	Kg	39.42	39.75 (0.84)	45.60 (14.72)	45.70 (0.22)	45.42 (-0.61)
21	Tea Leaf	Kg	291.33	282.50 (-3.03)	278.09 (-1.56)	287.84 (3.51)	311.27 (8.14)

Figures indicate Percentage increase (+) and decrease (-) over the previous year
 Calculated on the average of both Urban and Rural Prices

Table 2.3
Monthly Average Retail Price of essential commodities in Urban Centres during the year 2019

In Rs.

Sl.No.	Commodity	Unit	Jan	Feb	Mar	Apr	May	Jun	Jul	Aug	Sep	Oct	Nov	Dec	Annual Average
1	2	3	4	5	6	7	8	9	10	11	12	13	14	15	
A	Cereal & Product														
1	Rice (Parimol)	Kg	35.92	36.17	36.17	36.21	36.25	36.17	36.46	36.67	36.58	36.50	36.33	36.33	36.31
2	Rice (Coarse)	Kg	26.37	26.36	26.43	26.50	26.57	26.57	26.71	26.71	26.39	26.29	26.29	26.29	26.46
3	Atta (Wheat)	Kg	31.57	31.57	31.74	32.00	31.86	31.37	31.93	32.00	32.00	32.00	32.00	32.00	31.84
4	Bread	400 gm	29.17	29.17	29.17	29.17	29.17	29.17	29.17	29.17	29.17	29.17	29.17	29.17	29.17
B	Pulses & Product														
5	Arhar Dal	Kg	85.71	85.00	85.00	86.25	87.50	90.63	91.25	91.67	91.67	91.67	90.00	90.00	88.86
6	Moong Dal	Kg	85.00	84.46	84.57	86.96	89.29	90.21	91.21	92.43	92.86	93.00	93.63	95.00	89.89
7	Masur Dal	Kg	67.86	69.29	67.86	67.86	69.86	69.46	69.29	70.57	70.71	70.29	68.57	69.40	69.25
8	Soyabean	Kg	77.33	77.33	77.33	77.33	80.67	80.67	80.67	80.67	80.67	80.67	80.67	80.67	79.56
C	Oils & Fats														
9	Mustard Oil (Loose)	Ltr	106.43	105.95	105.00	105.00	103.93	105.19	105.00	105.00	105.00	105.00	107.14	107.14	105.48
10	Refined Oil (Loose)	Ltr	100.71	100.48	100.00	100.36	102.50	103.10	102.86	102.86	102.86	102.86	102.86	102.86	102.02
11	Vanaspati (Dalda)	Kg	94.17	95.00	95.00	95.00	99.00	99.00	99.00	99.00	99.00	99.00	95.00	95.00	96.93
D	Meat, Fish & Egg														
12	Beef	Kg	277.50	278.57	278.57	278.57	280.71	284.29	286.07	291.43	294.29	294.29	294.29	295.00	286.13
13	Mutton	Kg	488.33	488.33	488.33	488.33	502.92	529.17	531.67	531.67	540.00	536.67	536.67	536.67	516.56
14	Pork	Kg	260.36	261.43	263.71	264.29	265.71	270.00	272.86	275.71	275.71	275.71	275.71	275.71	269.74
15	Chicken (Broiler)	Kg	219.29	221.43	219.14	221.43	228.57	230.86	231.43	231.43	231.43	231.43	231.43	230.95	227.40
16	Fish (Fresh) Rohu	Kg	188.00	188.00	188.00	188.00	189.60	191.50	194.00	196.00	200.00	200.00	196.50	196.00	192.97
17	Fish (Dry)	Kg	740.00	725.00	729.17	733.33	733.33	733.33	732.50	731.67	707.14	707.14	707.14	680.95	721.73
18	Egg (Farm/Vety)	Pair	13.14	13.00	13.11	13.07	12.43	12.43	12.43	12.54	12.71	12.93	13.29	13.29	12.86
E	Milk & Milk Products														
19	Milk (Cow's)	Ltr	62.67	63.50	63.50	63.50	63.50	63.50	63.50	61.83	61.83	61.17	61.83	61.83	62.68
20	Butter	500 gms	222.50	222.50	222.50	222.50	233.08	236.33	236.33	236.33	236.33	236.83	236.83	236.83	231.58
21	Ghee	Kg	557.50	557.50	557.50	557.50	545.00	535.88	549.50	549.50	549.50	550.00	550.00	550.00	550.78
F	Condiments & Spices														
22	Salt Tata	Kg	20.57	20.57	20.57	20.57	20.57	20.71	20.71	20.71	20.71	20.71	20.71	21.14	20.69
23	Onion	Kg	27.74	25.77	26.64	26.82	26.71	28.52	34.79	39.54	51.71	65.71	85.06	119.64	46.56
24	Chillies (Green)	Kg	74.21	68.98	73.14	79.93	75.29	85.86	116.36	126.21	124.46	133.57	120.24	109.88	99.01
25	Dry Chillies	Kg	176.50	176.00	176.00	176.00	176.00	176.00	176.00	176.00	176.00	202.92	205.00	205.00	183.12
26	Turmeric Powder	Kg	285.36	284.29	287.14	291.43	291.43	291.43	292.50	291.71	291.43	291.43	292.57	297.14	290.65

Table 2.3 (Contd.)
Monthly Average Retail Price of essential commodities in Urban Centres during the year 2019

In Rs.

Sl.No.	Commodity	Unit	Jan	Feb	Mar	Apr	May	Jun	Jul	Aug	Sep	Oct	Nov	Dec	Annual Average
1	2	3	4	5	6	7	8	9	10	11	12	13	14	15	
27	Black Pepper	Kg	801.67	786.67	784.00	779.17	766.67	766.67	767.92	769.67	770.00	753.33	752.67	720.00	768.20
28	Jeera (Whole)	Kg	278.57	274.29	274.29	275.00	277.14	277.14	278.57	280.86	281.43	281.79	282.86	284.29	278.85
29	Ginger	Kg	54.82	56.90	66.57	65.71	66.43	72.07	83.93	113.57	116.79	108.93	105.43	105.24	84.70
30	Garlic	Kg	87.68	88.81	91.43	100.71	105.71	111.57	117.50	124.14	141.43	168.57	192.86	192.86	126.94
G	Vegetables														
31	Potato	Kg	23.14	19.14	17.26	18.64	19.43	19.83	21.96	22.71	22.32	23.89	28.14	29.88	22.20
32	Brinjal	Kg	31.61	30.24	27.86	31.07	38.93	41.52	43.57	45.38	47.29	48.54	47.14	41.43	39.55
33	Tomato	Kg	35.71	30.42	32.07	34.93	41.43	50.60	52.68	60.50	59.46	60.54	57.86	56.07	47.69
34	Cabbage	Kg	20.18	20.54	18.44	22.08	30.21	28.67	29.79	35.71	36.25	38.08	33.00	31.61	28.71
35	Cauliflower	Kg	24.46	23.93	27.54	35.00	41.15	43.50	48.75	54.58	63.13	63.10	49.04	45.36	43.29
36	Carrot	Kg	61.85	54.64	50.32	60.54	66.07	70.24	83.57	94.21	100.00	99.29	89.55	83.81	76.17
37	Beans	Kg	68.21	63.15	61.54	64.82	72.68	75.89	87.14	116.00	109.82	95.00	92.02	89.52	82.98
38	Gourd	Kg	45.00	56.00	53.00	52.00	46.50	56.33	51.67	53.08	49.17	49.79	49.53	49.72	50.98
H	Fruit (Fresh)														
39	Banana (Champa)	Dozen	37.29	37.85	37.92	38.13	38.54	37.43	39.17	39.17	39.79	40.42	40.83	40.83	38.95
40	Orange	Dozen	112.18	124.96	141.05	160.00	135.00	120.00	120.00	NA	NA	81.67	91.56	102.30	118.87
41	Pineapple (Medium)	Each	23.33	23.75	25.00	26.25	27.19	31.00	30.63	30.58	31.67	35.00	36.00	40.00	30.03
42	Mango (Lengra)	Kg	NR	NR	NR	137.50	102.50	102.50	104.25	109.30	113.33	87.50	80.00	NR	104.61
43	Apple (Kashmiri)	Kg	138.21	148.81	154.50	162.14	178.07	177.38	185.00	182.08	162.50	153.57	151.43	150.95	162.05
I	Other Foods														
44	Sugar	Kg	44.00	44.68	44.71	44.46	43.32	42.96	43.14	44.00	44.25	44.71	44.71	44.90	44.16
45	Gur	Kg	61.25	61.25	61.75	62.50	67.50	67.50	69.38	67.50	67.50	67.50	67.50	67.50	65.72
46	Tea leaf (Medium)	Kg	312.86	312.86	312.86	315.71	323.57	324.29	324.29	314.11	330.00	328.93	325.71	326.79	321.00
47	Tea Cup	Each	5.71	5.71	5.71	6.43	6.43	6.43	6.43	6.43	6.43	6.43	6.43	6.43	6.25
48	Biscuits	110 gms	14.30	14.00	14.00	14.00	14.00	14.00	14.00	14.00	14.00	14.00	14.00	14.00	14.03
J	Pan Tobacco Etc														
49	Betel nut	100 Nos	303.99	308.21	298.93	295.36	291.61	296.96	295.00	289.29	304.64	301.79	311.43	277.86	297.92
50	Betel leaf	20Leaves	15.94	21.93	26.86	28.82	28.99	23.13	21.18	19.57	20.71	20.33	21.74	22.43	22.64
51	Tobacco leaf	Kg	270.00	268.00	269.60	270.00	268.50	270.40	272.00	272.00	270.50	259.00	265.20	268.00	268.60
52	Biri (Mother India)	25 Nos	13.71	13.71	13.71	13.71	13.71	13.71	13.71	13.71	13.71	13.71	13.71	13.71	13.71
53	Cigarette (Gold Flake)	10 Nos	94.82	94.29	94.29	94.46	95.00	95.00	95.00	95.00	94.29	95.00	95.24	95.71	94.84

Table 2.3 (Contd.)
Monthly Average Retail Price of essential commodities in Urban Centres during the year 2019

In Rs.

Sl.No.	Commodity	Unit	Jan	Feb	Mar	Apr	May	Jun	Jul	Aug	Sep	Oct	Nov	Dec	Annual Average
1	2	3	4	5	6	7	8	9	10	11	12	13	14	15	
K	Fuel & Light														
54	Charcoal (Medium)	Kg	27.00	27.00	27.00	26.63	27.50	26.25	26.25	26.25	27.00	27.00	27.00	27.00	26.82
55	Kerosene Oil (Open Market)	Ltr	51.88	50.00	48.75	47.50	47.50	47.50	47.50	50.00	47.50	47.50	47.50	47.50	48.39
56	Firewood	Qtl/80 Nos	501.67	580.00	580.00	580.00	580.00	580.00	600.00	620.00	620.00	620.00	620.00	620.00	591.81
57	Petrol	Ltr	67.30	68.23	69.76	70.08	69.03	67.67	69.92	69.50	72.38	73.18	73.48	74.57	70.42
58	Diesel	Ltr	62.05	63.87	64.69	64.03	63.99	62.17	64.04	63.51	66.02	66.66	66.01	66.66	64.48
59	Mobil Oil	Ltr	275.93	278.19	279.14	279.14	279.14	279.14	281.86	283.43	285.43	285.43	286.86	287.81	281.79
60	Match box (50 Stick)	Each	2.00	2.00	2.00	2.00	2.00	2.00	2.00	2.00	2.00	2.00	2.00	2.00	2.00
L	Housing														
61	House rent	Monthly	2883.33	2883.33	2883.33	2883.33	2883.33	2966.67	2966.67	3058.33	3058.33	3058.33	3091.67	3091.67	2975.69
M	Clothing & Bedding														
62	Shirting (Medium)	Metre	147.50	151.67	153.33	153.33	154.17	154.17	160.00	161.67	161.67	163.33	168.33	168.33	158.13
63	Loin cloth	Metre	95.71	97.14	95.71	95.71	97.14	97.86	97.86	97.86	97.86	97.86	100.00	100.00	97.56
64	Ganji (Medium)	Each	110.00	110.00	110.00	110.00	110.71	112.14	113.57	112.86	112.86	112.86	117.86	117.86	112.56
65	Cotton for Frock & Blouse	Metre	142.14	145.71	145.00	145.00	146.43	146.43	146.43	146.43	147.86	147.86	152.86	153.57	147.14
66	Blanket (Medium)	Each	1292.86	1321.43	1307.14	1221.43	1224.29	1224.29	1228.57	1228.57	1228.57	1228.57	1242.86	1245.71	1249.52
67	Towel (Medium)	Each	258.57	257.14	257.14	285.71	257.14	257.14	261.43	261.43	261.43	261.43	268.57	268.57	262.98
68	Tericot (Medium)	Metre	298.57	300.00	300.00	300.00	294.29	294.29	298.57	300.00	301.43	301.43	305.71	305.71	300.00
69	Jainsem (Medium)	Metre	426.00	426.00	426.00	436.00	437.00	437.00	438.00	438.00	438.00	438.00	420.00	430.00	432.50
70	Dakmanda	Each	952.00	952.00	928.00	928.00	926.00	926.00	952.00	952.00	952.00	952.00	1030.00	1032.00	956.83
N	Footwear														
71	Shoe (Gents)	Pair	1000.00	1000.00	992.86	1035.71	1028.57	1028.57	1028.57	1028.57	1028.57	1028.57	1028.57	1042.86	1022.62
72	Shoe (Ladies)	Pair	650.00	650.00	642.86	671.43	664.29	661.43	661.43	661.43	661.43	661.43	664.29	664.29	659.52
73	Chappal	Pair	161.43	161.43	161.43	158.57	161.43	161.43	164.29	164.29	164.29	164.29	161.43	161.43	162.14
O	Miscellaneous														
a	Medical Care														
74	Doctor's Fee	Per visit	211.43	211.43	211.43	211.43	211.43	211.43	211.43	211.43	211.43	211.43	221.43	221.43	213.10
75	Paracetamol	10 Tabs	10.52	10.52	10.52	10.52	10.59	10.59	10.59	10.59	10.59	10.71	10.71	10.71	10.60

Table 2.3 (Contd.)
Monthly Average Retail Price of essential commodities in Urban Centres during the year 2019

In Rs.

Sl.No.	Commodity	Unit	Jan	Feb	Mar	Apr	May	Jun	Jul	Aug	Sep	Oct	Nov	Dec	Annual Average
1	2	3	4	5	6	7	8	9	10	11	12	13	14	15	
b	Education														
76	School fees CI IX (Public School)	Monthly	300.00	300.00	300.00	300.00	300.00	300.00	300.00	300.00	300.00	300.00	300.00	300.00	300.00
77	Exercise copy (No.4)	Each	33.86	33.86	36.00	37.43	36.00	36.00	36.00	36.00	36.00	36.00	36.00	36.00	35.76
78	Newspaper	Each	5.43	5.43	5.43	5.43	5.43	5.43	5.43	5.43	5.43	5.43	5.43	5.43	5.43
79	Ballpen	Each	10.00	10.00	10.00	10.00	10.00	10.00	10.00	10.00	10.00	10.00	10.00	10.00	10.00
80	Eraser	Each	5.00	5.00	5.00	5.00	5.00	5.00	5.00	5.00	5.00	5.00	5.00	5.00	5.00
81	Chelpark ink	Each	40.00	40.00	40.00	40.00	40.00	40.00	40.00	20.00	20.00	20.00	NA	NA	34.00
c	Transport & Com.														
82	Bus fare(private bus)	Km	3.11	3.11	3.11	3.11	3.11	3.11	3.11	3.11	3.11	3.11	3.11	3.11	3.11
d	Personal care &Effect														
83	Toilet soap (ordinary)	Each	13.43	13.43	13.43	13.43	13.43	13.43	13.43	13.43	13.43	13.43	13.43	12.86	13.38
84	Tooth paste (Colgate)	50 gms	19.29	19.29	19.29	19.29	19.29	19.29	19.29	19.29	19.29	19.29	19.29	19.29	19.29
85	Barber charge(hair cut)	Each	45.71	47.14	47.14	47.14	47.14	47.14	48.57	48.57	48.57	47.14	50.00	50.00	47.86
86	Umbrella (Gents)	Each	312.00	312.00	312.00	325.00	325.00	325.00	325.00	325.00	325.00	325.00	316.67	316.67	320.36
87	Umbrella (Ladies)	Each	294.00	294.00	294.00	296.67	296.67	296.67	296.67	296.67	296.67	296.67	296.67	296.67	296.00
e	Other														
88	Aluminum (ordinary)	Kg	394.29	394.29	394.29	392.86	398.57	404.29	405.71	405.71	405.71	405.71	408.57	408.57	401.55
89	Bucket Plastic 12 Litre	Each	158.33	158.33	158.33	158.33	163.33	163.33	163.33	171.67	171.67	171.67	171.67	171.67	165.14
90	Washing soap (ordinary)	Dozen	144.57	144.57	144.57	144.57	144.57	144.57	144.57	144.57	144.57	144.57	146.00	142.86	144.55
91	Surf washing powder	Kg	111.71	111.71	112.57	112.57	113.71	113.71	113.71	113.71	113.71	113.71	117.29	117.29	113.79
92	Tailoring charge	Each	285.71	288.57	288.57	288.57	288.57	288.57	275.71	275.71	275.71	275.71	282.86	282.86	283.10
93	Electric bulb 60 watt	Each	16.86	16.86	16.86	16.86	16.86	16.86	16.86	16.86	16.86	16.86	16.86	16.86	16.86
94	Torch cells	Pair	30.86	30.86	30.86	30.86	30.86	30.86	30.86	30.86	30.86	30.86	32.29	32.29	31.10
95	Lock & Key (Nayar)	Pair	134.29	134.29	134.29	134.29	134.29	120.00	120.00	120.00	120.00	120.00	120.00	120.00	125.95
96	Comb (big size)	One	18.57	18.57	18.57	18.57	18.57	18.57	18.57	18.57	18.57	18.57	18.57	18.57	18.57

Table 2.4
Monthly Average Retail prices of Essential Commodities in Rural centres during the year 2019

In Rs.

Sl.No	Commodity	Unit	Jan	Feb	Mar	Apr	May	Jun	Jul	Aug	Sep	Oct	Nov	Dec	Annual Average
1	2	3	4	5	6	7	8	9	10	11	12	13	14	15	16
A	Cereals &Product														
1	Rice (Parimol)	Kg	33.23	33.57	33.46	33.43	33.64	33.85	34.23	34.46	34.46	34.46	34.54	34.69	34.00
2	Rice (Coarse)	Kg	26.25	26.11	26.00	26.33	26.67	27.25	27.25	27.17	26.88	26.80	26.72	26.63	26.67
3	Atta (Wheat)	Kg	33.33	33.25	33.33	33.88	33.13	33.24	32.94	32.76	32.65	33.00	33.00	33.12	33.14
4	Bread	400 gms	29.60	29.00	29.33	29.63	29.00	28.47	28.47	28.47	28.47	28.76	28.76	29.94	28.99
B	Pulses &Product														
5	Arhar Dal	Kg	83.33	86.00	88.75	87.50	90.63	90.56	91.67	93.00	93.00	93.00	93.00	94.00	90.37
6	Moong Dal	Kg	89.62	90.00	91.92	91.79	93.57	94.33	95.33	97.00	97.00	97.67	96.67	97.33	94.35
7	Masur Dal	Kg	68.00	68.75	69.67	69.06	68.75	69.41	69.71	69.71	70.88	71.47	71.76	73.82	70.08
8	Soyabean	Kg	75.00	73.33	76.00	74.29	74.29	74.29	75.71	77.14	77.14	77.14	75.71	77.14	75.60
C	Oils &Fats														
9	Mustard Oil (Loose)	Ltr	104.64	107.00	107.50	106.33	106.00	108.13	108.44	108.44	108.44	108.44	109.06	109.06	107.62
10	Refined Oil	Kg	99.29	98.67	99.29	100.00	100.00	99.69	100.00	100.00	100.00	100.00	101.88	102.19	100.08
11	Vanaspati Dalda	Kg	87.14	87.50	85.71	89.38	89.38	90.56	90.56	91.67	92.22	93.13	93.13	93.13	90.29
D	Meat, Fish &Egg														
12	Beef	Kg	270.67	269.38	270.00	271.88	271.88	270.00	271.33	287.06	291.76	293.53	292.35	292.35	279.35
13	Mutton	Kg	482.00	485.00	476.67	460.00	460.00	508.57	508.57	518.57	525.71	525.71	525.71	525.71	500.19
14	Pork	Kg	260.00	256.25	257.33	261.88	261.88	260.59	260.59	262.94	262.94	264.71	265.88	268.24	261.93
15	Chicken (Broiler)	Kg	223.33	223.33	217.14	216.88	219.38	219.38	222.50	226.88	226.88	225.00	226.25	225.63	222.71
16	Fish (Fresh) Rohu	Kg	206.67	210.77	203.33	200.00	200.00	205.00	203.57	203.57	205.00	190.71	193.57	207.86	202.50
17	Fish (Dry)	Kg	573.08	558.57	547.69	557.14	560.71	549.33	565.00	558.67	558.67	558.67	548.67	562.00	558.18
18	Egg (Farm/Vety)	Pair	13.27	13.31	14.20	13.94	13.69	13.71	13.59	13.59	13.12	13.35	13.47	13.47	13.56
E	Milk &Milk products														
19	Milk (Cows)	Ltr	65.00	66.00	66.43	65.33	65.33	66.25	66.88	66.88	68.13	68.13	68.75	68.13	66.77

Table 2.4 (Contd.)
Monthly Average Retail prices of Essential Commodities in Rural centres during the year 2019

In Rs.

Sl.No	Commodity	Unit	Jan	Feb	Mar	Apr	May	June	Jul	Aug	Sep	Oct	Nov	Dec	Annual Average
1	2	3	4	5	6	7	8	9	10	11	12	13	14	15	16
20	Butter	500 gms	230.00	230.00	230.00	230.00	230.00	230.00	230.00	230.00	230.00	230.00	230.00	230.00	230.00
21	Ghee	Kg	481.00	481.00	451.25	482.50	470.71	470.71	470.71	470.71	470.71	485.00	488.29	494.00	476.38
F	Condiments & Spices														
22	Salt Tata	Kg	20.27	20.25	20.27	20.31	20.31	20.65	20.59	20.59	20.65	20.76	20.82	20.76	20.52
23	Onion	Kg	30.00	29.69	28.00	30.31	31.25	30.59	35.59	38.82	49.12	61.76	80.00	107.65	46.06
24	Chillies (Green)	Kg	83.00	82.81	80.71	76.67	83.33	95.00	118.75	135.63	134.38	133.75	121.88	115.63	105.13
25	Dry Chillies	Kg	180.71	179.33	178.21	185.00	180.67	182.50	194.38	196.56	198.44	200.94	205.94	207.19	190.82
26	Turmeric Powder	Kg	230.67	230.63	238.00	236.25	236.25	239.41	241.18	242.35	242.35	247.06	248.82	252.35	240.44
27	Black Pepper	Kg	658.33	650.00	620.83	609.23	593.85	597.86	608.57	592.86	607.14	607.14	619.29	621.43	615.54
28	Jeera Whole	Kg	257.50	254.62	261.67	270.00	276.92	279.29	281.43	278.57	280.71	280.00	281.43	282.14	273.69
29	Ginger	Kg	65.33	63.75	69.33	75.00	76.25	75.88	85.88	102.94	111.76	108.24	107.65	103.53	87.13
30	Garlic	Kg	106.67	100.00	107.14	110.00	110.67	111.88	117.50	121.25	131.25	145.00	161.25	180.00	125.22
G	Vegetables														
31	Potato (Medium)	Kg	23.93	23.00	20.36	20.53	22.87	21.81	23.81	25.63	24.88	25.31	25.69	27.88	23.81
32	Brinjal	Kg	34.62	33.57	31.15	35.00	37.67	41.33	44.00	43.33	42.67	46.00	42.67	41.67	39.47
33	Tomato	Kg	37.00	33.44	32.00	37.50	40.94	45.00	54.69	62.06	62.94	62.65	60.29	53.82	48.53
34	Cabbage	Kg	25.71	24.00	20.71	24.64	31.79	31.43	34.62	36.79	39.64	36.07	36.67	35.00	31.42
35	Cauliflower	Kg	29.62	28.21	33.75	37.00	50.00	44.29	61.11	57.14	62.22	67.27	51.92	48.00	47.54
36	Carrot	Kg	51.33	58.00	56.00	61.88	63.44	69.69	78.33	92.19	90.67	89.38	88.13	79.06	73.17
37	Beans	Kg	65.33	66.25	62.00	61.88	63.44	72.65	82.65	96.56	97.81	94.38	90.31	84.06	78.11
38	Gourd	Kg	39.38	37.22	40.50	41.67	38.33	37.50	42.73	42.27	42.27	43.18	47.73	45.91	41.56
H	Fruits (Fresh)														
39	Banana Champa	Dozen	41.92	39.64	46.54	38.46	38.46	35.36	37.86	37.50	37.50	37.50	38.57	37.50	38.90
40	Orange	Dozen	122.33	120.57	123.62	118.57	126.00	127.50	120.00	120.00	120.00	125.00	89.00	117.40	119.17
41	Pineapple (Medium)	Each	34.38	34.38	31.67	32.50	36.67	38.33	30.83	30.83	33.64	31.00	34.00	28.89	33.09
42	Mango (Lengra)	Kg	NA	NA	NA	NA	132.50	111.43	104.00	102.50	100.00	NA	NA	NA	110.09
43	Apple (Kashmiri)	Kg	136.36	137.50	136.36	149.17	163.33	184.62	177.69	173.08	168.46	150.77	142.50	146.67	155.54

Table 2.4 (Contd.)
Monthly Average Retail prices of Essential Commodities in Rural centres during the year 2019

In Rs.

Sl.No	Commodity	Unit	Jan	Feb	Mar	Apr	May	Jun	Jul	Aug	Sep	Oct	Nov	Dec	Annual Average
1	2	3	4	5	6	7	8	9	10	11	12	13	14	15	16
I	Other Foods														
44	Sugar	Kg	44.93	44.94	45.00	44.94	44.88	44.88	44.76	44.88	44.76	44.88	45.06	45.24	44.93
45	Gur	Kg	58.75	58.75	57.50	58.00	58.00	60.00	60.00	60.00	62.00	62.00	62.00	62.00	59.92
46	Tea leaf (Medium)	Kg	297.33	298.75	301.33	295.00	295.00	304.71	294.12	300.00	301.18	308.82	311.18	311.18	301.55
47	Tea cup	Per cup	5.80	5.75	5.47	5.75	5.75	5.71	5.71	5.71	5.71	5.88	5.88	5.88	5.75
48	Biscuits	110 gms	20.36	20.33	20.82	21.17	21.42	21.31	21.21	21.21	21.31	20.42	20.42	20.50	20.87
J	Pan Tobacco etc														
49	Betel Nut	100 Nos	250.00	256.00	270.71	298.00	282.67	280.00	261.25	266.88	276.88	265.63	253.44	257.50	268.25
50	Betel Leaf	20 Leaves	21.56	20.83	25.02	27.92	25.54	38.43	20.59	17.84	17.94	17.35	18.53	18.82	22.53
51	Tobacco Leaf	Kg	241.67	242.50	254.55	250.00	255.83	256.67	244.55	260.00	257.50	259.17	260.83	260.83	253.68
52	Biri (Mother India)	25 Nos	13.64	13.53	13.43	13.40	13.39	13.30	13.30	13.28	13.30	13.30	13.30	13.30	13.37
53	Cigarette (Packet)	10 Nos	88.60	88.06	87.27	86.19	89.00	93.50	93.93	93.93	95.14	95.50	95.71	94.67	91.79
K	Fuel & Light														
54	Charcoal (Medium)	Qtl	26.63	26.63	24.86	23.63	23.75	23.75	23.75	23.88	23.88	23.88	23.88	24.00	24.37
55	Kerosene Oil (Open)	Ltr	43.11	42.02	42.58	42.22	42.26	44.05	44.09	44.13	42.59	42.63	43.44	43.48	43.05
56	Firewood	Qtl	450.00	450.00	464.29	468.75	468.75	468.75	456.25	456.25	466.25	508.75	495.00	528.75	473.48
57	Petrol	Ltr	67.39	68.02	70.26	70.30	69.90	68.83	69.84	70.09	71.70	74.14	73.29	74.43	70.68
58	Diesel Oil	Ltr	62.07	62.14	64.66	64.09	64.15	62.70	63.28	63.49	64.87	66.75	66.08	66.59	64.24
59	Mobil Oil	Ltr	231.00	231.00	242.33	247.56	246.33	251.00	252.11	260.33	253.50	253.50	251.00	253.50	247.76
60	Match Box (50 Stick)	Each	2.00	2.00	2.00	2.00	2.00	2.00	2.00	2.00	2.00	2.00	2.00	2.00	2.00
L	Housing														
61	House rent	Monthly	1654.17	1654.17	1718.18	1604.17	1612.50	1612.50	1612.50	1612.50	1612.50	1612.50	1612.50	1612.50	1627.56
M	Clothing & Bedding														
62	Shirting (Medium)	Metre	186.92	180.71	177.69	181.43	181.79	176.00	182.33	183.33	185.33	185.00	183.00	170.80	181.19
63	Loin Cloth	Metre	128.33	125.50	122.73	120.83	122.50	118.56	112.92	114.23	117.31	119.23	120.38	121.92	120.37
64	Ganji (Medium)	Each	111.54	110.00	110.00	112.14	112.14	110.67	109.33	107.67	110.13	111.00	111.33	114.00	110.83
65	Cotton for Frock & Blouse	Metre	141.15	137.50	136.15	139.64	139.64	135.67	133.13	134.47	142.00	142.47	144.00	143.33	139.10

Table 2.4 (Contd.)
Monthly Average Retail prices of Essential Commodities in Rural centres during the year 2019

In Rs.

Sl.No	Commodity	Unit	Jan	Feb	Mar	Apr	May	June	July	Aug	Sept	Oct	Nov	Dec	Annual Average
1	2	3	4	5	6	7	8	9	10	11	12	13	14	15	16
66	Blanket (Medium)	Each	889.29	870.00	825.00	832.12	835.71	803.33	803.33	800.00	816.67	820.00	844.67	846.67	832.23
67	Towel (Medium)	Each	196.67	194.38	197.86	199.33	196.00	193.75	195.00	196.25	198.13	195.00	194.38	196.25	196.08
68	Tericot (Medium)	Metre	241.67	233.85	234.62	234.62	238.46	235.71	227.86	224.29	225.00	230.00	228.57	233.57	232.35
69	Jainsem (Medium)	Metre	248.57	248.57	241.67	226.25	226.25	226.26	226.25	226.25	227.50	227.50	225.00	232.50	231.88
70	Dakmanda	Each	1183.33	1107.14	1050.00	1050.00	1050.00	1043.75	1043.75	1047.50	1047.50	1016.25	1037.50	1047.50	1060.35
N	Footwear														
71	Shoe (Gents)	Pair	608.00	591.88	568.00	604.38	603.13	576.47	582.35	582.35	579.41	585.29	582.35	605.88	589.12
72	Shoe (Ladies)	Pair	438.57	430.67	415.71	433.33	440.00	416.88	416.88	420.00	420.00	420.00	429.38	438.75	426.68
73	Chappal	Pair	139.00	136.25	134.00	134.69	135.31	133.53	128.82	128.82	130.29	129.12	131.18	130.88	132.66
O	Miscellaneous														
a	Medical care														
74	Doctor's Fee	Per visit	176.36	176.36	167.00	147.27	147.27	147.27	160.91	160.91	160.91	160.91	162.73	162.73	160.89
75	Paracetamol	10 Tabs	11.50	11.53	11.64	11.73	11.73	11.75	12.71	12.25	12.25	12.25	12.25	12.25	11.99
b	Education														
76	School fees CI IX Public school	Monthly	250.00	250.00	264.29	264.29	233.75	233.75	321.43	264.29	264.29	264.29	264.29	264.29	261.58
77	Exercise copy (No 4)	Each	30.77	29.64	29.62	30.00	30.00	28.33	27.81	28.33	28.33	28.33	29.00	29.00	29.10
78	Newspaper	Each	5.07	5.40	5.43	5.40	5.07	5.06	5.38	5.38	5.40	5.38	5.38	5.38	5.31
79	Ballpen	Each	8.33	8.46	8.46	7.86	7.86	8.33	7.81	7.81	7.81	7.81	8.13	8.13	8.07
80	Eraser	Each	4.54	4.57	4.57	4.47	4.47	4.63	4.50	4.50	4.50	4.50	4.50	4.50	4.52
81	Chelpark ink	Each	25.00	25.00	25.00	25.00	25.00	25.00	25.00	25.00	25.00	25.00	25.00	25.00	25.00
c	Transport &Comm.														
82	Bus fare (Private Bus)	Km	1.78	1.73	1.73	1.73	1.73	1.69	1.64	1.64	1.64	1.64	1.64	1.64	1.69
d	Personal care &Effect														
83	Toilet soap (Ordinary)	Each	15.00	14.64	14.23	14.64	14.64	13.67	13.67	13.67	13.75	13.75	13.75	13.67	14.09
84	Tooth Paste (Colgate)	50gms	23.14	22.93	23.14	23.07	23.07	23.06	13.67	23.06	24.06	24.06	24.06	23.06	22.53

Table 2.4 (Contd.)
Monthly Average Retail prices of Essential Commodities in Rural centres during the year 2019

In Rs.

Sl.No.	Commodity	Unit	Jan	Feb	Mar	Apr	May	Jun	Jul	Aug	Sep	Oct	Nov	Dec	Annual Average
1	2	3	4		6	7	8	9	10	11	12	13	14	15	16
85	Barber Charge (Haircut)	Each	42.00	41.25	43.33	43.13	43.13	42.94	42.94	42.94	42.94	43.53	43.53	43.53	42.93
86	Umbrella (Gents)	Each	188.00	188.00	202.73	196.92	196.92	196.92	206.15	206.15	206.15	206.15	206.15	206.15	200.53
87	Umbrella (Ladies)	Each	202.00	202.00	213.64	196.15	196.15	194.62	203.85	207.69	207.69	207.69	207.69	206.15	203.78
e	Others														
88	Aluminum (Ordinary)	Kg	409.17	406.92	404.17	408.46	408.46	399.33	403.00	407.67	408.00	410.00	422.67	423.33	409.26
89	Bucket Plastic 12 Ltr	Each	156.25	151.92	155.00	156.54	156.54	152.50	147.86	146.43	145.00	148.57	147.14	145.71	150.79
90	Washing soap (Ordinary)	Dozen	150.29	148.27	141.93	142.69	142.69	141.35	138.41	138.41	139.18	139.18	135.35	135.35	141.09
91	Surf Washing Powder	Kg	117.50	115.38	112.92	114.54	114.54	112.79	112.79	113.50	113.50	110.64	110.64	112.07	113.40
92	Tailoring Charge	Each	215.71	213.33	216.00	206.67	206.67	223.13	220.00	218.13	218.13	218.13	229.38	231.88	218.09
93	Electric Bulb 60 Watt	Each	17.64	17.80	17.93	17.67	17.67	17.81	17.81	17.81	17.81	17.81	17.81	17.81	17.78
94	Torch Cells	Pair	34.14	33.60	33.29	34.00	34.00	33.50	33.50	33.88	33.88	33.88	33.88	33.88	33.78
95	Lock & Key (Nayar)	Pair	96.67	95.00	96.15	98.57	98.57	85.67	85.00	85.33	86.00	86.00	86.00	84.67	90.30
96	Comb (Big size)	One	20.57	19.87	20.00	20.53	21.20	19.88	19.88	20.19	20.19	20.19	19.20	20.19	20.16

NA = Not Available
 NR = Not Reported

Table 2.5

Monthly Average Retail Prices of Selected Commodities from all District Headquarters during the year 2019

Centre - Shillong

In Rs.

Sl.No.	Commodity	Unit	Jan	Feb	Mar	Apr	May	Jun	Jul	Aug	Sep	Oct	Nov	Dec	Annual Average
1	2	3	4	5	6	7	8	9	10	11	12	13	14	15	
	Cereal & Product														
1	Rice (Parimol)	Kg	35.00	35.00	35.00	35.25	36.00	36.00	36.00	36.00	36.00	36.00	35.00	35.00	35.52
2	Rice (Coarse)	Kg	28.00	28.00	28.00	28.00	28.00	28.00	28.00	28.00	28.00	28.00	28.00	28.00	28.00
3	Atta (Wheat)	Kg	30.00	30.00	30.00	30.00	30.00	30.00	30.00	30.00	30.00	30.00	30.00	30.00	30.00
4	Moong Dal	Kg	85.00	81.25	80.00	81.25	85.00	86.50	88.50	92.00	95.00	90.00	90.00	100.00	87.88
5	Masur Dal	Kg	80.00	76.25	75.00	75.00	79.00	76.25	75.00	75.00	75.00	75.00	65.00	68.33	74.57
6	Mustard Oil (Loose)	Ltr	100.00	100.00	100.00	100.00	100.00	100.00	100.00	100.00	100.00	100.00	100.00	100.00	100.00
7	Refined Oil (Loose)	Ltr	100.00	100.00	100.00	102.50	110.00	110.00	110.00	110.00	110.00	110.00	100.00	100.00	105.21
8	Vanaspati (Dalda)	Kg	120.00	120.00	120.00	120.00	120.00	120.00	120.00	120.00	120.00	120.00	100.00	100.00	116.67
9	Beef	Kg	300.00	300.00	300.00	300.00	300.00	300.00	312.50	350.00	350.00	350.00	350.00	350.00	321.88
10	Mutton	Kg	480.00	480.00	480.00	480.00	480.00	525.00	540.00	540.00	540.00	520.00	520.00	520.00	508.75
11	Pork	Kg	280.00	280.00	296.00	300.00	300.00	300.00	300.00	300.00	300.00	300.00	300.00	300.00	296.33
12	Chicken (Broiler)	Kg	220.00	220.00	220.00	220.00	250.00	250.00	250.00	250.00	250.00	250.00	250.00	246.67	239.72
13	Fish (Fresh) <i>Rohu</i>	Kg	160.00	160.00	160.00	160.00	168.00	177.50	180.00	180.00	180.00	180.00	162.50	160.00	169.00
14	Egg (Farm/Vety)	Pair	12.00	12.00	12.80	12.50	10.00	10.00	10.00	10.80	12.00	12.00	12.00	12.00	11.51
15	Milk (Cow's)	Ltr	56.00	56.00	56.00	56.00	56.00	56.00	56.00	56.00	56.00	52.00	56.00	56.00	55.67
16	Salt (Tata)	Kg	21.00	21.00	21.00	21.00	21.00	21.00	21.00	21.00	21.00	21.00	21.00	22.00	21.08
17	Onion	Kg	23.75	20.00	20.00	20.00	20.00	27.50	35.00	32.00	45.00	60.00	80.00	110.00	41.10
18	Chillies (Green)	Kg	60.00	60.00	60.00	60.00	60.00	60.00	60.00	70.00	70.00	115.00	115.00	86.67	73.06
19	Potato(Medium)	Kg	20.00	15.00	15.00	15.00	15.00	18.75	20.00	20.00	20.00	20.00	25.00	31.67	19.62
20	Tomato	Kg	31.25	30.00	33.00	35.00	30.00	35.00	45.00	43.00	40.00	60.00	60.00	60.00	41.85
21	Cabbage	Kg	20.00	20.00	18.40	20.00	20.00	20.00	20.00	28.00	30.00	37.50	30.00	30.00	24.49
22	Cauliflower	Kg	25.00	20.00	34.00	43.75	52.00	42.50	40.00	60.00	53.75	45.00	40.00	40.00	41.33
23	Banana (Champa)	Dozen	30.00	33.75	35.00	35.00	35.00	31.25	35.00	35.00	35.00	40.00	40.00	40.00	35.42
24	Sugar	Kg	45.00	45.00	45.00	44.25	42.00	42.50	35.00	44.00	42.00	43.00	43.00	44.33	42.92
25	Tea Leaf (Medium)	Kg	300.00	300.00	300.00	300.00	300.00	300.00	300.00	300.00	300.00	300.00	280.00	280.00	296.67
26	Betel Nut	100 Nos	500.00	500.00	490.00	400.00	400.00	400.00	400.00	410.00	475.00	450.00	495.00	250.00	430.83
27	Betel Leaf	20 Leaves	20.00	30.50	34.00	38.00	48.40	35.25	33.00	21.00	25.00	25.00	31.50	25.00	30.55
28	Kerosene Oil	Ltr	NR	NR	NR	NR	NR	NR	NR	NR	NR	NR	NR	NR	NR

NA – Not Available

NR – Not Reported

Table 2.5 (Contd.)

Monthly Average Retail Prices of Selected Commodities in all District headquarter during the year 2019

Centre - Nongpoh

In Rs.

Sl.No.	Commodity	Unit	Jan	Feb	Mar	Apr	May	Jun	Jul	Aug	Sep	Oct	Nov	Dec	Annual Average
1	2	3	4	5	6	7	8	9	10	11	12	13	14	15	
	Cereal & Product														
1	Rice (Parimol)	Kg	35.00	35.00	35.00	35.00	35.00	36.00	36.00	36.00	36.00	36.00	36.00	36.00	35.58
2	Rice (Coarse)	Kg	26.33	25.00	25.00	25.00	25.00	28.00	25.00	25.00	25.00	25.00	25.00	25.00	25.36
3	Atta (Wheat)	Kg	27.00	27.00	27.00	27.00	27.00	30.00	30.00	30.00	30.00	30.00	30.00	30.00	28.75
4	Moong Dal	Kg	80.00	80.00	80.00	80.00	95.00	80.00	95.00	95.00	95.00	100.00	100.00	100.00	90.00
5	Masur Dal	Kg	60.00	60.00	60.00	60.00	70.00	60.00	70.00	70.00	70.00	70.00	70.00	70.00	65.83
6	Mustard Oil (Loose)	Ltr	90.00	90.00	90.00	90.00	90.00	95.00	90.00	90.00	90.00	90.00	100.00	100.00	92.08
7	Refined Oil (Loose)	Ltr	90.00	90.00	90.00	90.00	90.00	95.00	90.00	90.00	90.00	90.00	100.00	100.00	92.08
8	Vanaspati (Dalda)	Kg	100.00	100.00	100.00	100.00	100.00	95.00	100.00	100.00	100.00	100.00	100.00	100.00	99.58
9	Beef	Kg	300.00	300.00	300.00	300.00	300.00	340.00	300.00	300.00	300.00	300.00	300.00	300.00	303.33
10	Mutton	Kg	450.00	450.00	450.00	450.00	450.00	400.00	450.00	450.00	500.00	500.00	500.00	500.00	462.50
11	Pork	Kg	280.00	280.00	280.00	280.00	280.00	280.00	300.00	300.00	300.00	300.00	300.00	300.00	290.00
12	Chicken (Broiler)	Kg	240.00	240.00	240.00	240.00	240.00	220.00	240.00	240.00	240.00	240.00	240.00	240.00	238.33
13	Fish (Fresh) Rohu	Kg	220.00	220.00	220.00	220.00	220.00	180.00	220.00	220.00	220.00	220.00	220.00	220.00	216.67
14	Egg (Farm/Vety)	Pair	12.00	12.00	12.00	12.00	12.00	12.00	12.00	12.00	12.00	12.00	14.00	14.00	12.33
15	Milk (Cow's)	Ltr	50.00	50.00	50.00	50.00	50.00	45.00	50.00	50.00	50.00	50.00	50.00	50.00	49.58
16	Salt (Tata)	Kg	20.00	20.00	20.00	20.00	20.00	20.00	21.00	21.00	21.00	21.00	21.00	21.00	20.50
17	Onion	Kg	21.67	25.00	30.00	30.00	30.00	25.00	40.00	50.00	60.00	70.00	140.00	160.00	56.81
18	Chillies (Green)	Kg	80.00	80.00	80.00	80.00	80.00	52.00	150.00	150.00	150.00	180.00	160.00	160.00	116.83
19	Potato(Medium)	Kg	20.00	20.00	15.00	20.00	20.00	16.75	20.00	20.00	20.00	20.00	40.00	40.00	22.65
20	Tomato	Kg	30.00	30.00	40.00	40.00	40.00	40.00	60.00	60.00	60.00	60.00	60.00	60.00	48.33
21	Cabbage	Kg	20.00	20.00	20.00	25.00	40.00	27.00	30.00	40.00	40.00	40.00	30.00	30.00	30.17
22	Cauliflower	Kg	30.00	30.00	30.00	40.00	40.00	30.00	40.00	50.00	50.00	50.00	40.00	40.00	39.17
23	Banana (Champa)	Dozen	NR	NR	NR	NR	NR	80.00	NR	NR	NR	NR	NR	NR	NR
24	Sugar	Kg	40.00	45.00	45.00	45.00	45.00	43.25	NR	45.00	45.00	45.00	45.00	45.00	44.39
25	Tea Leaf (Medium)	Kg	320.00	320.00	320.00	340.00	340.00	280.00	320.00	320.00	320.00	320.00	320.00	320.00	320.00
26	Betel Nut	100 Nos	366.67	400.00	400.00	400.00	400.00	363.75	400.00	400.00	400.00	400.00	400.00	400.00	394.20
27	Betel Leaf	20 Leaves	23.33	36.00	36.00	36.00	50.00	25.00	36.00	36.00	40.00	37.33	40.00	40.00	36.31
28	Kerosene Oil	Ltr	NR	NR	NR	NR	NR	40.00	NR	NR	NR	NR	NR	NR	NR

NA – Not Available
NR – Not Reported

Table 2.5 (Contd.)
Monthly Average Retail Prices of Selected Commodities in all District headquarter during the year 2019

Centre - Jowai															In Rs.
Sl.No.	Commodity	Unit	Jan	Feb	Mar	Apr	May	Jun	Jul	Aug	Sep	Oct	Nov	Dec	Annual Average
1	2	3	4	5	6	7	8	9	10	11	12	13	14	15	
	Cereal & Product														
1	Rice (Parimol)	Kg	36.00	36.00	36.00	36.00	36.00	36.00	36.00	37.00	37.00	37.00	37.00	37.00	36.42
2	Rice (Coarse)	Kg	28.00	28.00	28.00	28.00	28.00	28.00	28.00	28.00	28.00	28.00	28.00	28.00	28.00
3	Atta (Wheat)	Kg	30.00	30.00	30.00	30.00	30.00	30.00	30.00	30.00	30.00	30.00	30.00	30.00	30.00
4	Moong Dal	Kg	80.00	80.00	80.00	80.00	80.00	80.00	80.00	80.00	80.00	80.00	80.00	80.00	80.00
5	Masur Dal	Kg	55.00	58.75	60.00	60.00	60.00	60.00	60.00	60.00	60.00	60.00	60.00	60.00	59.48
6	Mustard Oil (Loose)	Ltr	95.00	95.00	95.00	95.00	95.00	95.00	95.00	95.00	95.00	95.00	100.00	100.00	95.83
7	Refined Oil (Loose)	Ltr	95.00	95.00	95.00	95.00	95.00	95.00	95.00	95.00	95.00	95.00	95.00	95.00	95.00
8	Vanaspati (Dalda)	Kg	90.00	95.00	95.00	95.00	95.00	95.00	95.00	95.00	95.00	95.00	95.00	95.00	94.58
9	Beef	Kg	340.00	340.00	340.00	340.00	340.00	340.00	340.00	340.00	360.00	360.00	360.00	360.00	346.67
10	Mutton	Kg	400.00	400.00	400.00	400.00	400.00	400.00	400.00	400.00	400.00	400.00	400.00	400.00	400.00
11	Pork	Kg	280.00	280.00	280.00	280.00	280.00	280.00	280.00	280.00	280.00	280.00	280.00	280.00	280.00
12	Chicken (Broiler)	Kg	200.00	200.00	200.00	200.00	220.00	220.00	220.00	220.00	220.00	220.00	220.00	220.00	213.33
13	Fish (Fresh) Rohu	Kg	180.00	180.00	180.00	180.00	180.00	180.00	180.00	180.00	200.00	200.00	200.00	200.00	186.67
14	Egg (Farm/Vety)	Pair	12.00	12.00	12.00	12.00	12.00	12.00	12.00	12.00	12.00	12.00	12.00	12.00	12.00
15	Milk (Cow's)	Ltr	45.00	45.00	45.00	45.00	45.00	45.00	45.00	45.00	45.00	45.00	45.00	45.00	45.00
16	Salt (Tata)	Kg	20.00	20.00	20.00	20.00	20.00	20.00	20.00	20.00	20.00	20.00	20.00	20.00	20.00
17	Onion	Kg	27.50	22.00	21.50	21.50	22.00	25.00	31.00	37.25	54.50	60.00	81.25	111.25	42.90
18	Chillies (Green)	Kg	52.00	52.00	52.00	52.00	52.00	52.00	52.00	51.00	91.25	120.00	120.00	120.00	72.19
19	Potato(Medium)	Kg	23.25	15.25	13.25	15.50	16.00	16.75	20.00	20.00	20.00	21.00	22.00	25.00	19.00
20	Tomato	Kg	38.75	30.00	27.75	29.50	30.00	40.00	36.25	40.00	36.25	36.25	40.00	40.00	35.40
21	Cabbage	Kg	25.00	25.00	21.25	25.00	25.00	27.00	25.00	30.00	30.00	28.25	25.00	25.00	25.96
22	Cauliflower	Kg	28.75	26.25	37.50	35.00	33.75	30.00	31.25	41.67	68.75	62.50	51.25	50.00	41.39
23	Banana (Champa)	Dozen	82.50	80.00	80.00	80.00	80.00	80.00	90.00	90.00	90.00	90.00	90.00	90.00	85.21
24	Sugar	Kg	43.00	42.75	43.00	45.00	45.00	43.25	90.00	43.00	44.75	45.00	45.00	45.00	47.90
25	Tea Leaf (Medium)	Kg	280.00	280.00	280.00	280.00	280.00	280.00	280.00	280.00	280.00	280.00	280.00	280.00	280.00
26	Betel Nut	100 Nos	355.00	357.50	302.50	367.50	330.00	363.75	350.00	300.00	345.00	357.50	400.00	450.00	356.56
27	Betel Leaf	20 Leaves	10.00	17.50	27.50	38.75	35.00	25.00	14.25	15.00	15.00	15.00	15.00	25.00	21.08
28	Kerosene Oil	Ltr	40.00	40.00	40.00	40.00	40.00	40.00	40.00	NR	40.00	40.00	40.00	40.00	40.00

NA – Not Available
NR – Not Reported

Table 2.5 (Contd.)

Monthly Average Retail Prices of Selected Commodities in all District headquarter during the year 2019

Centre - Nongstoin

In Rs.

Sl.No.	Commodity	Unit	Jan	Feb	Mar	Apr	May	Jun	Jul	Aug	Sep	Oct	Nov	Dec	Annual Average
1	2	3	4	5	6	7	8	9	10	11	12	13	14	15	
	Cereal & Product														
1	Rice (Parimol)	Kg	36.00	36.00	36.00	36.00	36.00	36.00	36.00	36.00	36.00	36.00	36.00	36.00	36.00
2	Rice (Coarse)	Kg	25.00	25.00	25.00	25.00	26.00	26.00	26.00	26.00	26.00	26.00	26.00	26.00	25.67
3	Atta (Wheat)	Kg	32.00	32.00	32.00	32.00	32.00	32.00	32.00	32.00	32.00	32.00	32.00	32.00	32.00
4	Moong Dal	Kg	90.00	90.00	90.00	90.00	90.00	90.00	90.00	90.00	90.00	92.50	100.00	100.00	91.88
5	Masur Dal	Kg	60.00	60.00	60.00	60.00	60.00	60.00	60.00	60.00	60.00	60.00	60.00	62.50	60.21
6	Mustard Oil (Loose)	Ltr	100.00	96.67	90.00	90.00	90.00	93.33	90.00	90.00	90.00	90.00	90.00	90.00	91.67
7	Refined Oil (Loose)	Ltr	100.00	98.33	95.00	95.00	95.00	96.67	95.00	95.00	95.00	95.00	95.00	95.00	95.83
8	Vanaspati (Dalda)	Kg	95.00	NA	NA	NA	NA	NA	NA	NA	NA	NA	NA	NA	95.00
9	Beef	Kg	280.00	280.00	280.00	280.00	295.00	300.00	300.00	300.00	300.00	300.00	300.00	305.00	293.33
10	Mutton	Kg	NR	NR	NR	NR	NR	NR	NR	NR	NR	NR	NA	NA	NR
11	Pork	Kg	260.00	260.00	260.00	260.00	270.00	280.00	280.00	300.00	300.00	300.00	300.00	300.00	280.83
12	Chicken (Broiler)	Kg	230.00	230.00	230.00	230.00	230.00	230.00	230.00	230.00	230.00	230.00	230.00	230.00	230.00
13	Fish (Fresh) <i>Rohu</i>	Kg	200.00	200.00	200.00	200.00	200.00	200.00	200.00	200.00	200.00	200.00	200.00	200.00	200.00
14	Egg (Farm/Vety)	Pair	13.00	12.00	12.00	12.00	12.00	12.00	12.00	12.00	12.00	13.50	14.00	14.00	12.54
15	Milk (Cow's)	Ltr	72.50	70.00	70.00	70.00	70.00	70.00	70.00	60.00	60.00	60.00	60.00	60.00	66.04
16	Salt (Tata)	Kg	21.00	21.00	21.00	21.00	21.00	21.00	21.00	21.00	21.00	21.00	21.00	21.00	21.00
17	Onion	Kg	30.00	29.67	30.00	26.25	25.00	28.33	32.50	35.00	47.50	65.00	71.67	106.25	43.93
18	Chillies (Green)	Kg	90.00	93.33	110.00	90.00	127.50	160.00	157.50	152.50	160.00	180.00	146.67	107.50	131.25
19	Potato(Medium)	Kg	18.75	15.00	15.00	15.00	15.00	18.33	20.00	20.00	20.00	21.25	25.00	27.50	19.24
20	Tomato	Kg	37.50	31.67	38.75	38.75	52.50	56.67	45.00	52.50	50.00	57.50	50.00	52.50	46.94
21	Cabbage	Kg	23.75	20.00	20.00	22.50	36.25	35.00	36.25	36.25	37.50	35.00	30.00	32.50	30.42
22	Cauliflower	Kg	30.00	30.00	33.75	36.25	50.00	60.00	80.00	NA	80.00	72.50	50.00	50.00	52.05
23	Banana (Champa)	Dozen	31.25	33.33	32.50	31.25	31.25	28.33	25.00	25.00	28.75	30.00	30.00	30.00	29.72
24	Sugar	Kg	40.00	40.00	40.00	40.00	40.00	40.00	25.00	40.00	40.00	40.00	40.00	40.00	38.75
25	Tea Leaf (Medium)	Kg	250.00	250.00	250.00	250.00	250.00	250.00	250.00	250.00	250.00	250.00	250.00	250.00	250.00
26	Betel Nut	100 Nos	300.00	300.00	300.00	300.00	300.00	300.00	300.00	300.00	300.00	300.00	280.00	240.00	293.33
27	Betel Leaf	20 Leaves	27.00	27.00	28.50	36.50	34.50	30.67	30.00	30.00	30.00	30.00	30.67	32.00	30.57
28	Kerosene Oil	Ltr	67.50	60.00	55.00	50.00	50.00	50.00	50.00	50.00	50.00	50.00	50.00	50.00	52.71

NA – Not Available

NR – Not Reported

Table 2.5 (Contd.)

Monthly Average Retail Prices of Selected Commodities in all District headquarter during the year 2019

Centre - Williannagar

In Rs.

Sl.No.	Commodity	Unit	Jan	Feb	Mar	Apr	May	Jun	Jul	Aug	Sep	Oct	Nov	Dec	Annual Average
1	2	3	4	5	6	7	8	9	10	11	12	13	14	15	
	Cereal & Product														
1	Rice (Parimol)	Kg	37.00	37.00	37.00	37.00	37.00	37.00	37.00	37.00	36.50	36.00	36.00	36.00	36.71
2	Rice (Coarse)	Kg	25.00	25.00	25.00	26.00	26.00	26.00	26.00	26.00	24.50	24.00	24.00	24.00	25.13
3	Atta (Wheat)	Kg	32.00	32.00	33.20	35.00	35.00	35.00	35.00	35.00	35.00	35.00	35.00	35.00	34.35
4	Moong Dal	Kg	90.00	90.00	92.00	100.00	90.00	90.00	95.00	100.00	100.00	100.00	100.00	100.00	95.58
5	Masur Dal	Kg	80.00	80.00	80.00	80.00	80.00	80.00	80.00	80.00	80.00	80.00	80.00	80.00	80.00
6	Mustard Oil (Loose)	Ltr	130.00	130.00	130.00	130.00	130.00	130.00	130.00	130.00	130.00	130.00	130.00	130.00	130.00
7	Refined Oil (Loose)	Ltr	90.00	90.00	90.00	90.00	90.00	90.00	90.00	90.00	90.00	90.00	90.00	90.00	90.00
8	Vanaspati (Dalda)	Kg	80.00	80.00	80.00	80.00	100.00	100.00	100.00	100.00	100.00	100.00	100.00	100.00	93.33
9	Beef	Kg	220.00	220.00	220.00	220.00	220.00	220.00	220.00	220.00	220.00	220.00	220.00	220.00	220.00
10	Mutton	Kg	600.00	600.00	600.00	600.00	600.00	600.00	600.00	600.00	600.00	600.00	600.00	600.00	600.00
11	Pork	Kg	220.00	220.00	220.00	220.00	220.00	220.00	220.00	220.00	220.00	220.00	220.00	220.00	220.00
12	Chicken (Broiler)	Kg	200.00	200.00	200.00	200.00	200.00	200.00	200.00	200.00	200.00	200.00	200.00	200.00	200.00
13	Fish (Fresh) <i>Rohu</i>	Kg	180.00	180.00	180.00	180.00	180.00	180.00	190.00	200.00	200.00	200.00	200.00	200.00	189.17
14	Egg (Farm/Vety)	Pair	14.00	14.00	14.00	14.00	12.00	12.00	12.00	12.00	12.00	12.00	12.00	12.00	12.67
15	Milk (Cow's)	Ltr	80.00	80.00	80.00	80.00	80.00	80.00	80.00	80.00	80.00	80.00	80.00	80.00	80.00
16	Salt (Tata)	Kg	20.00	20.00	20.00	20.00	20.00	20.00	20.00	20.00	20.00	20.00	20.00	22.00	20.17
17	Onion	Kg	30.00	28.75	30.00	30.00	30.00	30.00	37.50	40.00	50.00	65.00	72.00	110.00	46.10
18	Chillies (Green)	Kg	80.00	60.00	72.00	80.00	60.00	75.00	115.00	120.00	120.00	110.00	100.00	100.00	91.00
19	Potato(Medium)	Kg	30.00	23.75	25.00	20.00	25.00	20.00	30.00	30.00	30.00	30.00	30.00	30.00	26.98
20	Tomato	Kg	32.50	30.00	30.00	30.00	37.50	40.00	60.00	80.00	80.00	70.00	60.00	60.00	50.83
21	Cabbage	Kg	15.00	15.00	11.00	10.00	25.00	25.00	27.50	30.00	30.00	32.50	30.00	25.00	23.00
22	Cauliflower	Kg	20.00	20.00	20.00	20.00	30.00	NA	NA	NA	NA	85.00	56.00	45.00	37.00
23	Banana (Champa)	Dozen	10.00	10.00	10.00	12.50	15.00	15.00	15.00	15.00	15.00	12.50	15.00	15.00	13.33
24	Sugar	Kg	45.00	45.00	45.00	42.00	40.00	40.00	15.00	42.00	43.00	45.00	45.00	45.00	41.00
25	Tea Leaf (Medium)	Kg	280.00	280.00	280.00	280.00	260.00	260.00	260.00	260.00	260.00	260.00	260.00	260.00	266.67
26	Betel Nut	100 Nos	206.25	200.00	200.00	200.00	200.00	200.00	200.00	200.00	190.00	180.00	180.00	180.00	194.69
27	Betel Leaf	20 Leaves	10.00	12.50	24.00	27.50	15.00	15.00	15.00	15.00	15.00	15.00	15.00	15.00	16.17
28	Kerosene Oil	Ltr	50.00	50.00	50.00	50.00	50.00	50.00	50.00	50.00	50.00	50.00	50.00	50.00	50.00

NA – Not Available

NR – Not Reported

Table 2.5 (Contd.)

Monthly Average Retail Prices of Selected Commodities in all District headquarter during the year 2019

Centre – Baghmara

In Rs.

Sl.No.	Commodity	Unit	Jan	Feb	Mar	Apr	May	Jun	Jul	Aug	Sep	Oct	Nov	Dec	Annual Average
1	2	3	4	5	6	7	8	9	10	11	12	13	14	15	
	Cereal & Product														
1	Rice (Parimol)	Kg	NR	NR	NR	NR	NR	NR	NR	NR	NR	NR	NR	NR	NR
2	Rice (Coarse)	Kg	26.00	26.00	26.00	26.00	26.00	26.00	26.00	26.00	26.00	26.00	26.00	26.00	26.00
3	Atta (Wheat)	Kg	35.00	35.00	35.00	35.00	35.00	35.00	35.00	35.00	35.00	35.00	35.00	35.00	35.00
4	Moong Dal	Kg	90.00	90.00	90.00	97.50	100.00	100.00	100.00	100.00	100.00	100.00	100.00	100.00	97.29
5	Masur Dal	Kg	60.00	70.00	60.00	60.00	60.00	60.00	60.00	60.00	60.00	60.00	60.00	60.00	60.83
6	Mustard Oil (Loose)	Ltr	100.00	100.00	100.00	100.00	100.00	100.00	100.00	100.00	100.00	100.00	100.00	100.00	100.00
7	Refined Oil (Loose)	Ltr	120.00	120.00	120.00	120.00	120.00	120.00	120.00	120.00	120.00	120.00	120.00	120.00	120.00
8	Vanaspati (Dalda)	Kg	NR	NR	NR	NR	NR	NR	NR	NR	NR	NR	NR	NR	NR
9	Beef	Kg	250.00	250.00	250.00	250.00	250.00	250.00	250.00	250.00	250.00	250.00	250.00	250.00	250.00
10	Mutton	Kg	550.00	550.00	550.00	550.00	600.00	600.00	600.00	600.00	600.00	600.00	600.00	600.00	583.33
11	Pork	Kg	250.00	250.00	250.00	250.00	250.00	250.00	250.00	250.00	250.00	250.00	250.00	250.00	250.00
12	Chicken (Broiler)	Kg	240.00	240.00	240.00	240.00	240.00	240.00	240.00	240.00	240.00	240.00	240.00	240.00	240.00
13	Fish (Fresh) <i>Rohu</i>	Kg	NR	NR	NR	NR	NR	NR	NR	NR	NR	NR	NR	NR	NR
14	Egg (Farm/Vety)	Pair	15.00	15.00	15.00	15.00	15.00	15.00	15.00	15.00	15.00	15.00	15.00	15.00	15.00
15	Milk (Cow's)	Ltr	NR	NR	NR	NR	NR	NR	NR	NR	NR	NR	NR	NR	NR
16	Salt (Tata)	Kg	21.00	21.00	21.00	21.00	21.00	21.00	21.00	21.00	21.00	21.00	21.00	21.00	21.00
17	Onion	Kg	32.50	30.00	30.00	30.00	30.00	30.00	30.00	42.50	47.50	70.00	72.50	120.00	47.08
18	Chillies (Green)	Kg	80.00	80.00	80.00	120.00	70.00	70.00	110.00	140.00	110.00	100.00	80.00	100.00	95.00
19	Potato(Medium)	Kg	30.00	25.00	20.00	25.00	25.00	25.00	20.00	20.00	20.00	30.00	30.00	30.00	25.00
20	Tomato	Kg	42.50	35.00	30.00	37.50	50.00	52.50	55.00	70.00	75.00	70.00	65.00	65.00	53.96
21	Cabbage	Kg	22.50	30.00	30.00	30.00	35.00	35.00	40.00	50.00	50.00	50.00	50.00	52.50	39.58
22	Cauliflower	Kg	22.50	30.00	NA	NA	NA	45.00	52.50	66.67	NR	73.33	60.00	60.00	51.25
23	Banana (Champa)	Dozen	50.00	50.00	50.00	50.00	50.00	50.00	50.00	50.00	50.00	50.00	50.00	50.00	50.00
24	Sugar	Kg	45.00	45.00	45.00	45.00	45.00	45.00	50.00	45.00	45.00	45.00	45.00	45.00	45.42
25	Tea Leaf (Medium)	Kg	460.00	460.00	460.00	460.00	460.00	460.00	460.00	460.00	460.00	460.00	460.00	460.00	460.00
26	Betel Nut	100 Nos	250.00	250.00	250.00	250.00	250.00	250.00	250.00	250.00	250.00	250.00	250.00	250.00	250.00
27	Betel Leaf	20 Leaves	10.00	10.00	10.00	10.00	10.00	10.00	10.00	10.00	10.00	10.00	10.00	10.00	10.00
28	Kerosene Oil	Ltr	NR	NR	NR	NR	NR	NR	NR	NR	NR	NR	NR	NR	NR

NA – Not Available

NR – Not Reported

Table 2.5 (Contd.)
Monthly Average Retail Prices of Selected Commodities in all District headquarter during the year 2019

Centre – Tura															In Rs.
Sl.No.	Commodity	Unit	Jan	Feb	Mar	Apr	May	Jun	Jul	Aug	Sep	Oct	Nov	Dec	Annual Average
1	2	3	4	5	6	7	8	9	10	11	12	13	14	15	
	Cereal & Product														
1	Rice (Parimol)	Kg	36.50	38.00	38.00	38.00	37.50	37.00	37.75	38.00	38.00	38.00	38.00	38.00	37.73
2	Rice (Coarse)	Kg	26.25	27.50	28.00	27.50	27.00	27.00	28.00	28.00	27.25	27.00	27.00	27.00	27.29
3	Atta (Wheat)	Kg	35.00	35.00	35.00	35.00	34.00	30.60	31.50	32.00	32.00	32.00	32.00	32.00	33.01
4	Moong Dal	Kg	80.00	80.00	80.00	80.00	85.00	90.00	90.00	90.00	90.00	88.50	85.40	85.00	85.33
5	Masur Dal	Kg	80.00	80.00	80.00	80.00	80.00	80.00	80.00	89.00	90.00	87.00	85.00	85.00	83.00
6	Mustard Oil (Loose)	Ltr	130.00	130.00	130.00	130.00	122.50	128.00	130.00	130.00	130.00	130.00	130.00	130.00	129.21
7	Refined Oil (Loose)	Ltr	110.00	110.00	110.00	110.00	117.50	120.00	120.00	120.00	120.00	120.00	120.00	120.00	116.46
8	Vanaspati (Dalda)	Kg	80.00	80.00	80.00	80.00	80.00	80.00	80.00	80.00	80.00	80.00	80.00	80.00	80.00
9	Beef	Kg	252.50	260.00	260.00	260.00	260.00	280.00	280.00	280.00	280.00	280.00	280.00	280.00	271.04
10	Mutton	Kg	450.00	450.00	450.00	450.00	487.50	600.00	600.00	600.00	600.00	600.00	600.00	600.00	540.63
11	Pork	Kg	252.50	260.00	260.00	260.00	260.00	280.00	280.00	280.00	280.00	280.00	280.00	280.00	271.04
12	Chicken (Broiler)	Kg	205.00	220.00	204.00	220.00	220.00	236.00	240.00	240.00	240.00	240.00	240.00	240.00	228.75
13	Fish (Fresh) <i>Rohu</i>	Kg	NR	NR	NR	NR	NR	NR	NR	NR	NR	NR	NR	NR	NR
14	Egg (Farm/Vety)	Pair	14.00	14.00	14.00	14.00	14.00	14.00	14.00	14.00	14.00	14.00	14.00	14.00	14.00
15	Milk (Cow's)	Ltr	72.50	80.00	80.00	80.00	80.00	80.00	80.00	80.00	80.00	80.00	80.00	80.00	79.38
16	Salt (Tata)	Kg	21.00	21.00	21.00	21.00	21.00	21.00	21.00	21.00	21.00	21.00	21.00	21.00	21.00
17	Onion	Kg	28.75	25.00	25.00	30.00	30.00	28.80	37.50	40.00	57.50	70.00	78.00	120.00	47.55
18	Chillies (Green)	Kg	77.50	57.50	58.00	77.50	77.50	104.00	170.00	200.00	170.00	130.00	120.00	95.00	111.42
19	Potato(Medium)	Kg	20.00	20.00	17.60	20.00	20.00	20.00	23.75	29.00	26.25	25.00	25.00	25.00	22.63
20	Tomato	Kg	37.50	26.25	25.00	33.75	50.00	60.00	67.50	78.00	75.00	70.00	70.00	55.00	54.00
21	Cabbage	Kg	15.00	13.75	8.40	NA	NR	NR	NR	NR	NR	43.33	36.00	26.25	23.79
22	Cauliflower	Kg	15.00	11.25	10.00	NA	NR	NR	NR	NR	NR	53.33	46.00	32.50	28.01
23	Banana (Champa)	Dozen	20.00	20.00	20.00	20.00	20.00	20.00	20.00	20.00	20.00	20.00	20.00	20.00	20.00
24	Sugar	Kg	50.00	50.00	50.00	50.00	46.25	45.00	20.00	49.00	50.00	50.00	50.00	50.00	46.69
25	Tea Leaf (Medium)	Kg	300.00	300.00	300.00	300.00	375.00	400.00	400.00	328.80	440.00	432.50	430.00	437.50	370.32
26	Betel Nut	100 Nos	150.00	150.00	150.00	150.00	161.25	165.00	165.00	165.00	172.50	175.00	175.00	175.00	162.81
27	Betel Leaf	20 Leaves	11.25	20.00	28.00	15.00	10.00	10.00	10.00	10.00	10.00	10.00	10.00	10.00	12.85
28	Kerosene Oil	Ltr	50.00	50.00	50.00	50.00	50.00	50.00	50.00	50.00	50.00	50.00	50.00	50.00	50.00

NA – Not Available
 NR – Not Reported

Wholesale Prices

of

Essential

Commodities

Table 3.1
Monthly Average Wholesale Prices for Food and Non Food Items in Meghalaya during the Year 2019

Sl. No.	Commodity	Unit	Jan	Feb	Mar	Apr	May	Jun	Jul	Aug	Sep	Oct	Nov	Dec	Annual Average in Rs.
1	2	3	4	5	6	7	8	9	10	11	12	13	14	15	16
	FOOD														
1	Rice (Medium)	Qtl	3048	3250	3250	3258	3283	3283	3300	3300	3300	3300	3270	3248	3258
2	Rice (Coarse)	Qtl	2354	2393	2439	2432	2429	2414	2393	2350	2350	2357	2373	2381	2389
3	Rice (Local)	Qtl	NR	NR	NR	NR	NR	NR	NR	NR	NR	NR	NR	NR	-
4	Atta (Wheat)	Qtl	2723	2656	2657	2666	2741	2749	2804	2796	2804	2818	2846	2904	2764
5	Maize	Qtl	2400	2400	2400	2413	2450	2450	2450	2463	2450	2450	2650	2650	2469
6	Moongdal	Qtl	7700	7443	7443	7596	8171	8211	8254	8471	8529	8496	8654	8700	8139
7	Masurdal	Qtl	5886	5864	5821	5877	6046	6096	6100	6171	6132	6093	5792	5821	5975
8	Arhaldal	Qtl	7520	7025	7025	7150	7713	7819	7938	8200	8200	8200	8056	8150	7750
9	Potato	Qtl	1488	1319	1183	1198	1239	1374	1496	1606	1583	1619	2029	2254	1532
10	Tomato	Qtl	2563	2342	2569	2681	3344	3781	3988	4125	3931	4156	4191	4238	3492
11	Onion	Qtl	3208	1913	1950	1938	1964	2171	2590	3033	4208	5354	7502	10817	3887
12	Oranges (Medium)	100 nos	850	1039	1263	1300	NA	NA	NA	NA	NA	475	608	733	895
13	Banana	100 nos	403	418	423	433	433	431	427	432	435	558	460	460	443
14	Ginger	Qtl	4833	5483	5508	5708	5833	6375	7333	8042	7667	7325	7400	7333	6570
15	Green Chillies	Qtl	6300	5880	5955	5830	6480	7197	8115	9300	9815	11450	10672	9945	8078
16	Turmeric (Powder)	Qtl	NR	NR	NR	NR	NR	NR	NR	NR	NR	NR	NR	NR	-
17	Mustard Oil	15 Ltr	1391	1400	1404	1395	1371	1370	1372	1371	1375	1376	1374	1398	1383
18	Vanaspati Dalda	15 Ltr	1125	1123	1127	1127	1113	1114	1147	1145	1133	1133	1114	1135	1128
19	Fish (Rohu)	Qtl	15313	15000	15000	15000	15250	15458	15750	16250	16500	15850	15983	15933	15607
20	Eggs (Farm)	30 nos	161	167	169	169	158	156	155	208	157	215	282	291	191
21	Sugar	Qtl	3871	4015	4013	3989	4013	4011	4021	4032	4009	4029	4057	4076	4011
22	Tea Leaf (Medium)	Qtl	24883	25383	25383	25383	25583	27417	27583	27708	27667	27417	26500	26500	26451
23	Salt (Tata)	Qtl	1340	1443	1443	1440	1431	1431	1445	1443	1443	1443	1454	1454	1434
24	Dry Chillies	Qtl	13250	13667	13667	13667	13667	13667	13500	13333	13833	14083	14167	14167	13722
25	Betel Nut (Medium)	400 nos	1025	1043	1020	1023	1014	1030	1004	1019	1011	1002	980	868	1003

Table 3.1 (Contd.)

Monthly Average Wholesale Prices for Food and Non Food Items in Meghalaya during the Year 2019

Sl. No.	Commodity	Unit	Jan	Feb	Mar	Apr	May	Jun	Jul	Aug	Sep	Oct	Nov	Dec	Annual Average in Rs.
1	2	3	4	5	6	7	8	9	10	11	12	13	14	15	16
26	Betel Leaf (Khasi variety)	240 Leaves	299	321	343	401	459	381	324	306	286	288	295	306	334
27	Betel Leaf (Garo variety)	100 Leaves	63	63	73	69	58	58	58	56	56	55	55	55	60
NON FOOD															
28	Cooking Gas (LPG)	Per Cylinder	767	743	768	786	797	805	726	675	662	675	746	773	744
29	Match Box	60 (Packet)	634	634	634	634	634	634	640	747	747	674	674	671	663
30	Fullscape Paper	Per Ream	242	242	242	252	262	262	268	270	270	270	270	270	260
31	Cotton Cloth for Frock, etc.	30 Metre	3408	3433	3433	3433	3417	3417	3433	3442	3442	3442	3450	3451	3433
32	Shirting	30 Metre	3368	3433	3458	3467	3400	3383	3383	3408	3408	3417	3425	3360	3409
33	Washing Soap	100 Nos	1073	1073	1073	1073	1076	1076	1083	1100	1100	1100	1076	1090	1083
34	Toilet Soap	100 Nos	1254	1254	1254	1254	1247	1247	1247	1249	1249	1249	1249	1249	1250
35	Charcoal	Qtl	1263	1263	1250	1238	1250	1250	1245	1240	1253	1265	1308	1308	1261

NA – Not Available
NR – Not Reported

Table 3.2

Monthly Average Wholesale Prices of Selected Commodities in Shillong for the Year 2019

Sl. No.	Commodity	Unit	Jan	Feb	Mar	Apr	May	Jun	Jul	Aug	Sep	Oct	Nov	Dec	Annual Average in Rs.
1	2	3	4	5	6	7	8	9	10	11	12	13	14	15	16
1	Rice (Medium)	Qtl	3200	3200	3200	3250	3400	3400	3400	3400	3400	3400	3200	3000	3288
2	Rice (Coarse)	Qtl	2400	2400	2400	2400	2400	2400	2400	2400	2400	2400	2450	2450	2408
3	Rice (Local)	Qtl	NR	NR	NR	NR	NR	NR	NR	NR	NR	NR	NR	NR	-
4	Atta (Wheat)	Qtl	2500	2500	2500	2550	2700	2700	2700	2700	2700	2700	2725	2700	2640
5	Maize	Qtl	2300	2300	2300	2325	2400	2400	2400	2400	2400	2400	2800	2800	2435
6	Moong Dal	Qtl	7300	7300	7300	7475	8150	8275	8300	8300	8300	8300	8700	8700	8033
7	Masur Dal	Qtl	7100	7100	7100	7100	7250	7375	7400	7400	7400	7400	5375	5450	6954
8	Arhal Dal	Qtl	7100	7100	7100	7100	7250	7375	7600	7800	7800	7800	7100	7100	7352
9	Potato	Qtl	1200	1050	1000	1040	1160	1185	1300	1300	1300	1300	1850	2450	1345
10	Tomato	Qtl	1600	1600	1725	1950	2000	2300	3250	3300	3100	3600	3863	3950	2686
11	Onion	Qtl	1800	1800	1800	1715	1460	1690	2650	2900	3500	4375	5788	9850	3277
12	Oranges (Medium)	100 Nos	650	1050	1350	1350	NR	NR	NR	NR	NR	NR	750	750	983
13	Banana	100 Nos	260	268	270	300	300	300	300	300	300	675	380	380	336
14	Ginger	Qtl	4500	4450	4525	5125	5500	6125	7000	7125	7500	7725	7200	7000	6148
15	Green Chillies	Qtl	5500	5500	5500	5500	5500	5500	5575	5800	5800	7825	8375	6575	6079
16	Turmeric (Powder)	Qtl	NR	NR	NR	NR	NR	NR	NR	NR	NR	NR	NR	NR	-
17	Mustard Oil	15 Ltr	1400	1438	1450	1425	1350	1350	1350	1350	1350	1350	1250	1250	1359
18	Vanaspati Dalda	15 Ltr	960	960	960	960	960	960	960	960	960	960	888	900	949
19	Fish (Rohu)	Qtl	15000	15000	15000	15000	15750	16375	16500	16500	16500	14550	14950	14800	15494
20	Eggs (Farm)	30 Nos	160	160	163	163	140	140	140	145	150	158	160	170	154
21	Sugar	Qtl	3800	3800	3800	3788	3750	3775	3925	3950	3800	3800	3880	3950	3835
22	Tea Leaf (Medium)	Qtl	24800	24800	24800	24800	25000	25000	25000	25000	25000	25000	20000	20000	24100
23	Salt (Tata)	Qtl	1900	1900	1900	1880	1820	1820	1820	1820	1820	1820	1900	1900	1858
24	Dry Chillies	Qtl	13000	13000	13000	13000	13000	13000	12500	12000	12000	12750	13000	13000	12771
25	Betel Nut (Medium)	400 Nos	1800	1800	1800	1600	1600	1600	1600	1650	1800	1763	1575	900	1624

Table 3.2 (Contd.)

Monthly Average Wholesale Prices of Selected Commodities in Shillong for the Year 2019

Sl. No.	Commodity	Unit	Jan	Feb	Mar	Apr	May	Jun	Jul	Aug	Sep	Oct	Nov	Dec	Annual Average in Rs.	
1	2	3	4	5	6	7	8	9	10	11	12	13	14	15	16	
26	Betel Leaf	240 leaves	350	388	400	450	600	425	300	258	280	273	265	230	351	
27	Cooking Gas (LPG)	Per Cylinder	720	714.5	764.6	769.8	775.9	800.5	698.5	636.5	652.5	691	691	770	724	
28	Match Box	60 (Packet)	1080	1080	1080	1080	1080	1080	1080	1080	1080	570	570	550	951	
29	Fullscape Paper	Per Ream	200	200	200	200	200	200	200	200	200	200	200	200	200	
30	Cotton Cloth for Frock, etc.	30 m	2500	2500	2500	2500	2500	2500	2500	2500	2500	2500	2500	2500	2500	
31	Shirting	30 m	3700	3700	3700	3700	3700	3700	3700	3700	3700	3700	3750	3750	NR	3709
32	Washing Soap	100 Nos.	1100	1100	1100	1100	1100	1100	1100	1100	1100	1100	1100	1200	1108	
33	Toilet Soap	100 Nos.	2200	2200	2200	2200	2200	2200	2200	2200	2200	2200	2200	2200	2200	
34	Loin Cloth (Medium)	40 Metre	2800	2800	2800	2800	2800	2800	2800	2800	2800	2800	2800	2800	2800	
35	Pant Cloth (Tericot)	30 Metre	7100	7100	7100	7100	7100	7100	7100	7100	7100	7100	7100	NR	7100	
36	Charcoal	Qtl	750	750	750	750	750	750	750	750	750	800	800	800	763	

NA – Not Available
NR – Not Reported

Consumer

Price

Index

Table 4.1**Consumer Price Index Numbers for Industrial Workers – All India**Old Base 1982=100
New Base 2001=100

Month/Year	All India Indices
2002	477
2003	496
2004	514
2005	536
2006	123
2007	131
2008	142
2009	157
2010	176
2011	192
2012	209
2013	232
2014	247
2015	261
2016	274
2017	281
2018	295
January,2019	307
February,2019	307
March,2019	309
April,2019	312
May,2019	314
June,2019	316
July,2019	319
August,2019	320
September,2019	322
October,2019	325
November,2019	328
December,2019	330

Source: - Labour Bureau, Government of India

Table 4.2**Consumer Price Index Numbers for Agricultural Labourers**

Base Year – 1986 – 87 = 100

Month/Year	Agricultural Labourers			
	Meghalaya		All India	
	General	Food	General	Food
1	2	3	4	5
1996	256	264	249	253
1997	273	279	262	262
1998	302	311	287	293
1999	331	340	304	310
2000	343	348	307	307
2001	348	347	307	300
2002	347	340	315	309
2003	346	335	328	322
2004	355	346	337	331
2005	368	357	349	341
2006	397	385	372	366
2007	423	418	402	400
2008	459	462	439	440
2009	517	533	494	500
2010	553	563	553	562
2011	604	608	602	598
2012	670	667	652	638
2013	731	727	735	724
2014	785	778	788	768
2015	806	781	825	797
2016	847	818	864	837
2017	862	825	883	845
2018	901	869	900	844
January, 2019	908	870	915	855
February, 2019	907	866	917	857
March, 2019	906	865	924	865
April, 2019	914	875	932	874
May, 2019	921	885	940	885
June, 2019	933	887	950	898
July, 2019	945	899	958	907
August, 2019	950	907	965	915
September, 2019	958	916	976	928
October, 2019	975	936	987	942
November, 2019	987	947	1000	959
December, 2019	989	948	1014	976

Source: - Labour Bureau, Government of India.

Table 4.3**Consumer Price Index Numbers for Rural Labourers**

Base Year-1986-87=100

Month/Year	Rural Labourers			
	Meghalaya		All India	
	General	Food	General	Food
1	2	3	4	5
1996	255	263	250	253
1997	271	278	263	263
1998	300	311	288	293
1999	329	339	305	310
2000	341	348	308	307
2001	345	346	309	301
2002	343	339	318	310
2003	344	334	331	323
2004	353	345	340	332
2005	366	356	351	341
2006	394	384	373	366
2007	422	417	403	399
2008	456	462	440	440
2009	513	531	494	500
2010	549	561	552	563
2011	600	606	602	599
2012	638	664	654	640
2013	726	723	735	725
2014	781	774	791	771
2015	807	779	829	802
2016	849	814	869	843
2017	864	822	889	850
2018	903	865	907	850
January,2019	909	866	923	860
February,2019	908	862	925	862
March,2019	907	861	932	870
April,2019	915	871	939	880
May,2019	921	881	948	891
June,2019	933	883	957	904
July,2019	946	894	965	912
August,2019	950	902	972	919
September,2019	957	911	983	933
October,2019	973	930	993	947
November,2019	985	941	1006	963
December,2019	987	942	1019	981

Source: - Labour Bureau, Government of India.

Table 4.4

Consumer Price Index Numbers for Rural, Urban and Combined (Rural + Urban) of Meghalaya, North Eastern States and All – India during the Calendar Year 2019

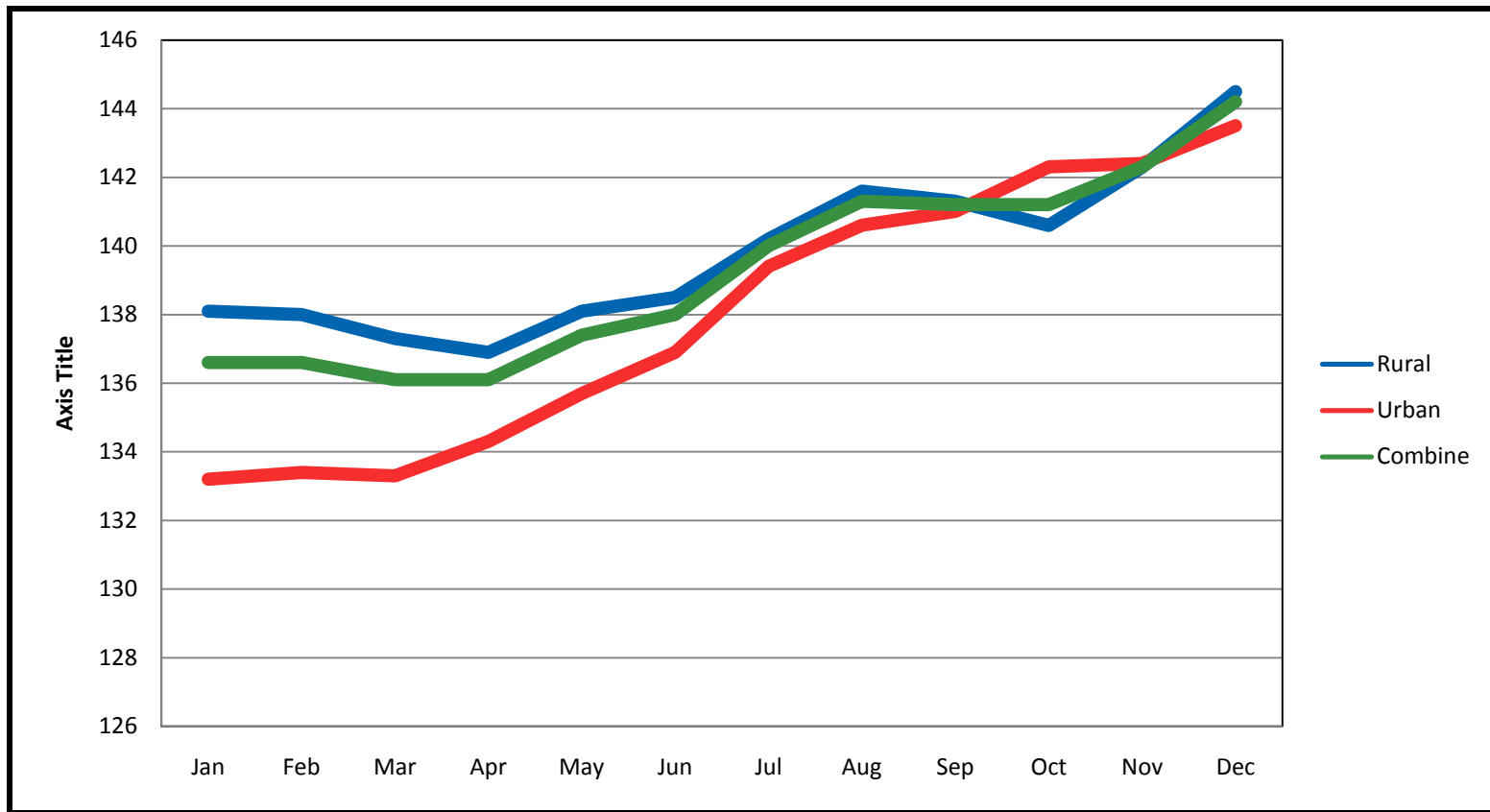
Base Year 2010=100
New Base 2012=100

Sl. No.	State	Jan	Feb	Mar	Apr	May	Jun	Jul	Aug	Sep	Oct	Nov	Dec
1	Meghalaya												
	Rural	138.1	138.0	137.3	136.9	138.1	138.5	140.2	141.6	141.3	140.6	142.3	144.5
	Urban	133.2	133.4	133.3	134.3	135.7	136.9	139.4	140.6	141.0	142.3	142.4	143.5
	Combine	136.6	136.6	136.1	136.1	137.4	138.0	140.0	141.3	141.2	141.2	142.3	144.2
2	Assam												
	Rural	144.2	144.1	144.0	143.9	145.0	145.4	147.4	148.5	150.7	151.7	152.7	154.8
	Urban	137.1	137.7	138.8	140.0	141.4	142.6	144.6	146.5	148.8	149.4	149.9	150.7
	Combine	142.7	142.8	142.9	143.1	144.3	144.8	146.8	148.1	150.3	151.2	152.1	154
3	Tripura												
	Rural	149.0	149.2	150.0	152.5	153.0	154.9	158.1	159.2	159.7	160.4	161.5	163.9
	Urban	144.0	143.5	144.3	145.2	145.8	146.7	147.7	149.0	149.9	152.2	154.8	156.6
	Combine	147.7	147.7	148.5	150.6	151.1	152.8	155.4	156.6	157.2	158.3	159.8	162.0
4	Mizoram												
	Rural	139.1	139.7	139.7	139.9	140.0	140.1	141.9	143.1	144.7	146.1	146.5	147.7
	Urban	130.0	130.1	131.4	133.1	133.1	134.1	134.8	136.6	137.6	138.3	139.2	140.0
	Combine	133.5	133.7	134.6	135.1	135.8	136.4	137.6	139.1	140.4	141.3	142.0	143.0

Table 4.4 (Contd.)

Sl. No.	State	Jan	Feb	Mar	Apr	May	Jun	Jul	Aug	Sep	Oct	Nov	Dec
5	Manipur												
	Rural	166.7	168.0	169.9	172.6	173.5	174.7	174.6	175.1	177.2	179.0	179.4	180.6
	Urban	139.8	141.5	143.0	144.4	145.9	146.1	147.3	148.7	149.5	150.2	152.2	153.4
	Combine	158.2	159.6	161.4	163.7	164.8	165.6	166.0	166.7	168.4	169.9	170.8	172.0
6	Nagaland												
	Rural	160.2	161.7	161.7	160.4	161.3	161.5	161.0	161.1	161.7	161.6	162.7	164.0
	Urban	140.3	140.4	140.9	141.5	141.8	141.8	141.5	141.7	142.0	142.9	144.3	145.1
	Combine	151.7	152.6	152.9	152.4	153.0	153.1	152.7	152.9	153.3	153.7	154.9	156.0
7	Arunachal Pradesh												
	Rural	160.4	158.9	157.2	156.5	157.3	158.2	157.9	158.0	158.0	158.5	158.8	168.8
	Urban	-	-	-	-	-	-	-	-	-	-	-	-
	Combine	-	-	-	-	-	-	157.9	158.0	158.0	-	-	168.8
8	Sikkim												
	Rural	150.4	148.7	148.2	148.2	148.4	148.9	148.8	152.1	155.0	157.1	157.5	159.8
	Urban	144.8	146.0	147.0	146.9	147.3	147.8	148.5	149.4	149.9	150.4	150.5	151.3
	Combine	148.6	147.8	147.8	147.8	148.0	148.5	148.7	151.2	153.3	154.9	155.2	157.0
9	All India												
	Rural	141.0	141.0	141.2	141.7	142.4	143.6	144.9	145.7	146.7	148.3	149.9	152.3
	Urban	138.0	138.6	139.5	140.6	141.5	142.1	143.3	144.2	144.7	146.0	147.0	148.3
	Combine	139.6	139.9	140.4	141.2	142.0	142.9	144.2	145.0	145.8	147.2	148.6	150.4

Source: Ministry of Statistics and Programme Implementation, Central Statistics Office



State	Jan	Feb	Mar	Apr	May	Jun	Jul	Aug	Sep	Oct	Nov	Dec
Meghalaya												
Rural	138.1	138.0	137.3	136.9	138.1	138.5	140.2	141.6	141.3	140.6	142.3	144.5
Urban	133.2	133.4	133.3	134.3	135.7	136.9	139.4	140.6	141.0	142.3	142.4	143.5
Combine	136.6	136.6	136.1	136.1	137.4	138.0	140.0	141.3	141.2	141.2	142.3	144.2

Table 4.5 Consumer Price Index Numbers for Rural, Urban and Combine (Rural + Urban) of Meghalaya for the year 2019

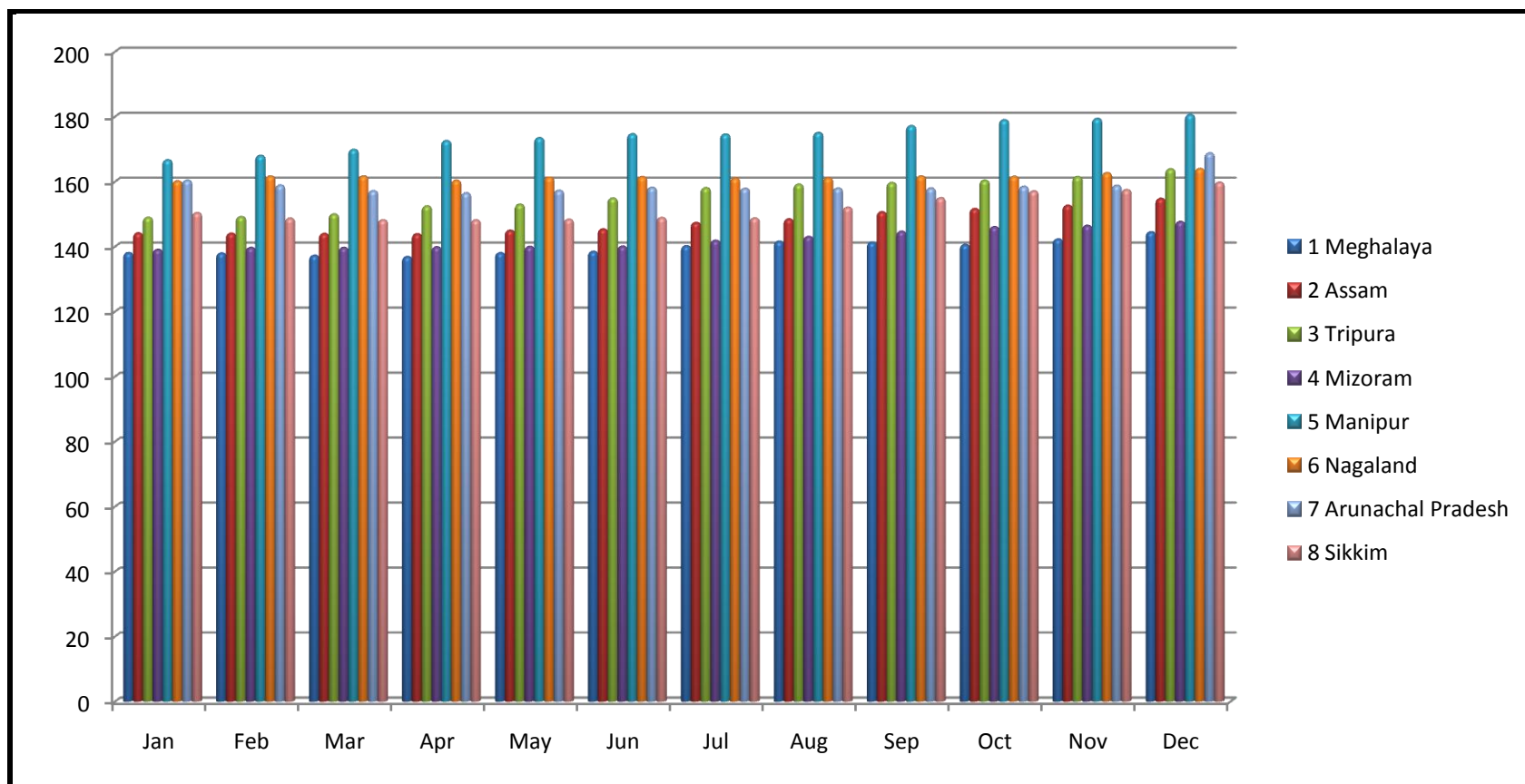


Table 4.6 Rural Consumer Price Index Numbers of Meghalaya and Rest of North East Indian States for the year 2019.

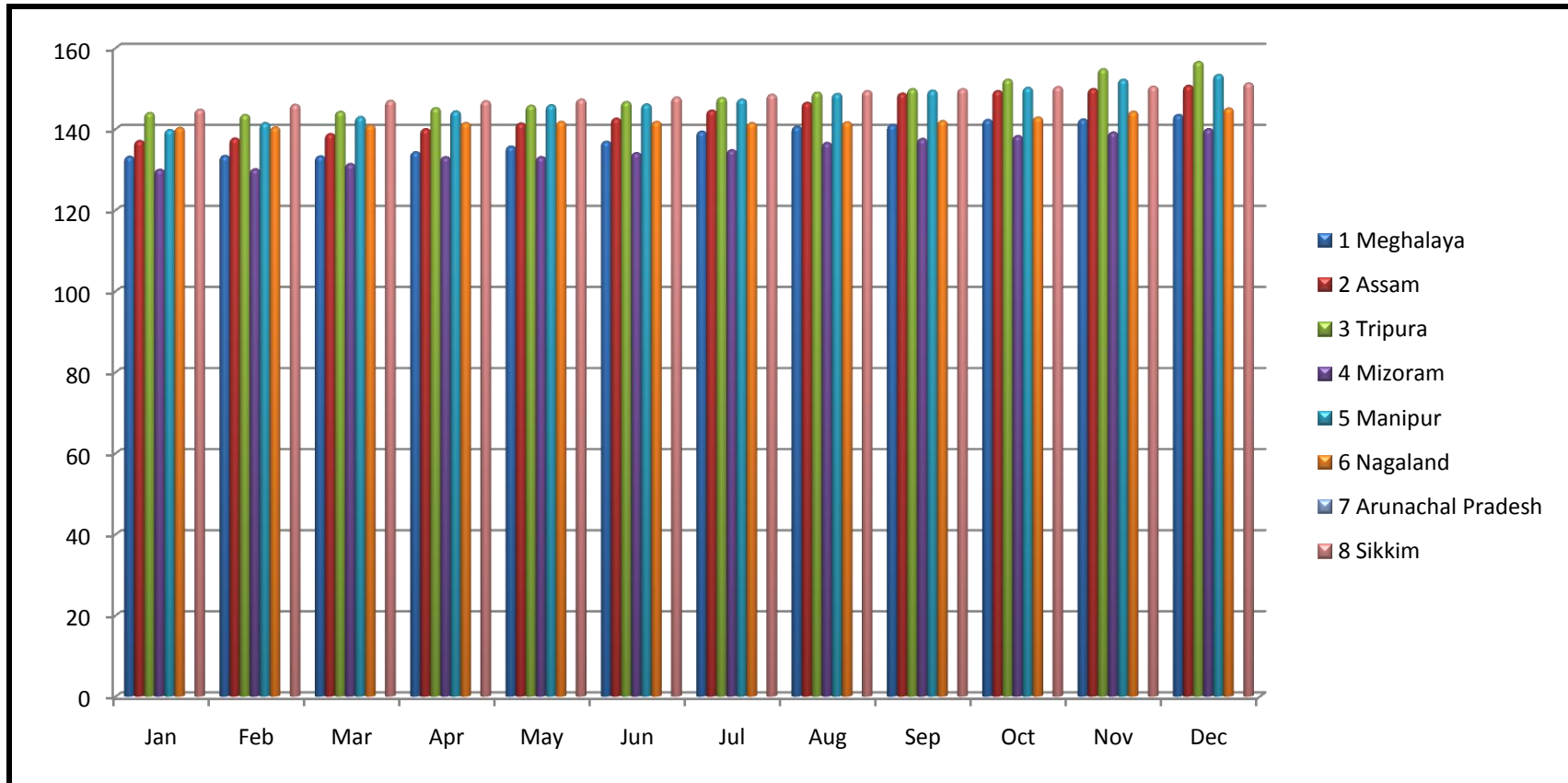
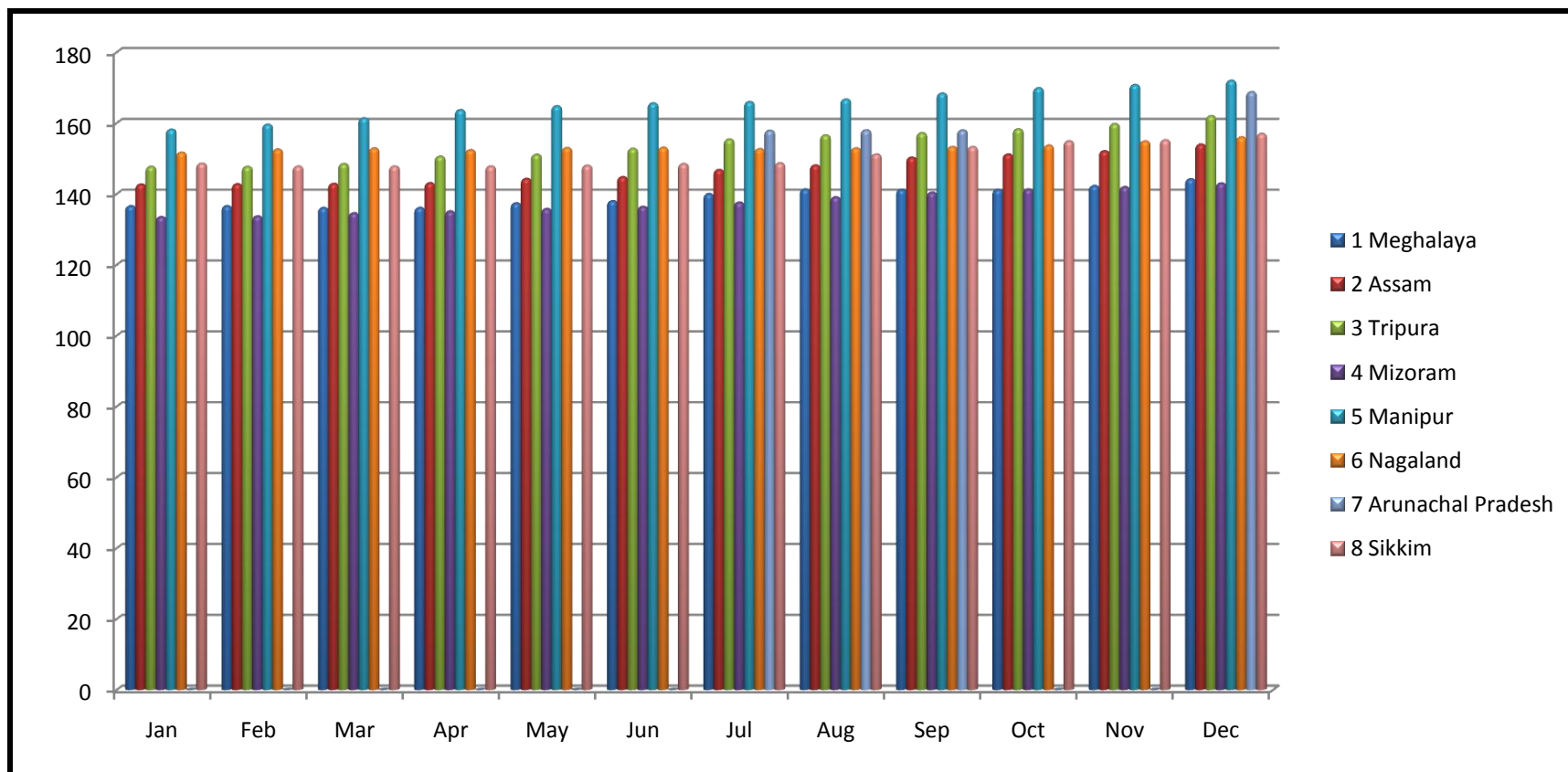
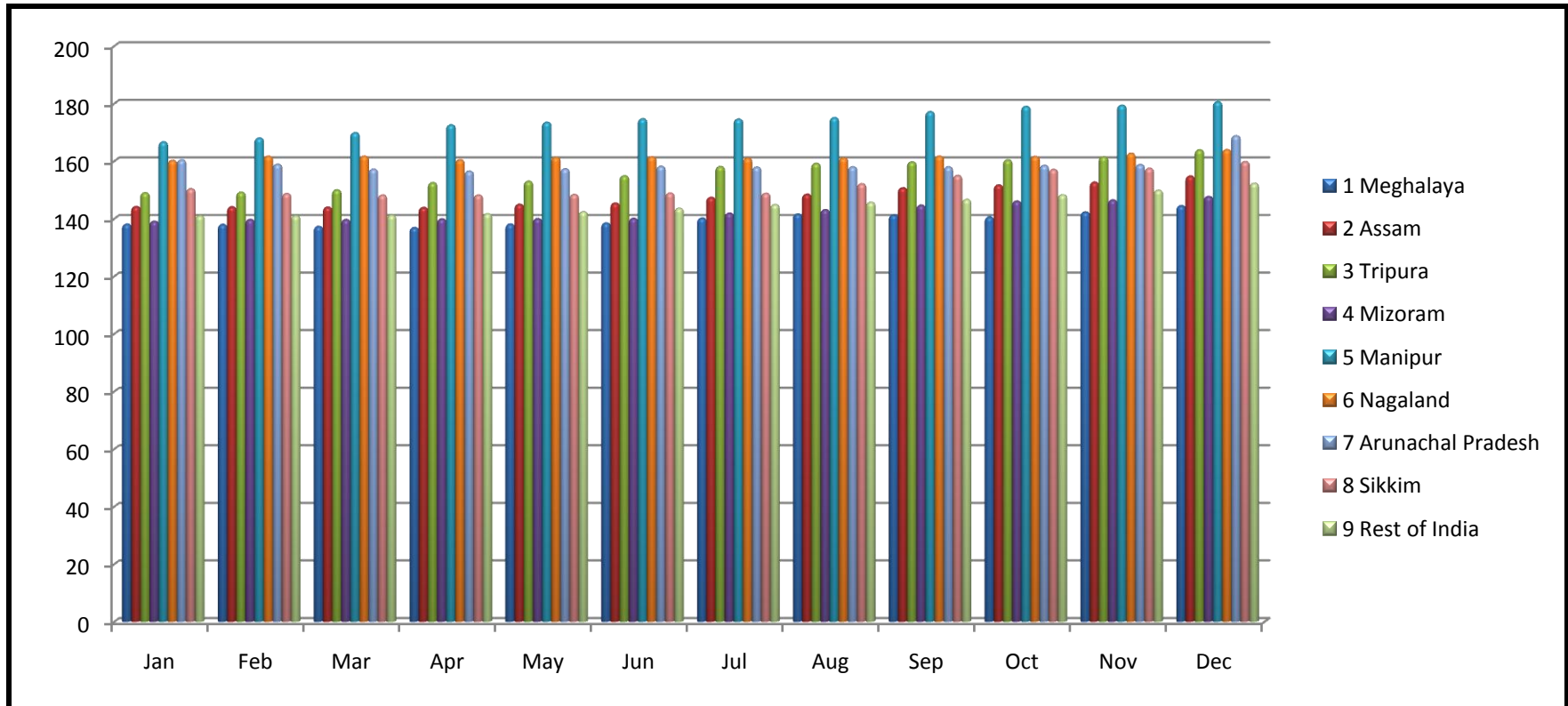


Table 4.7 Urban Consumer Price Index Numbers of Meghalaya and Rest of North East Indian States for the year 2019.



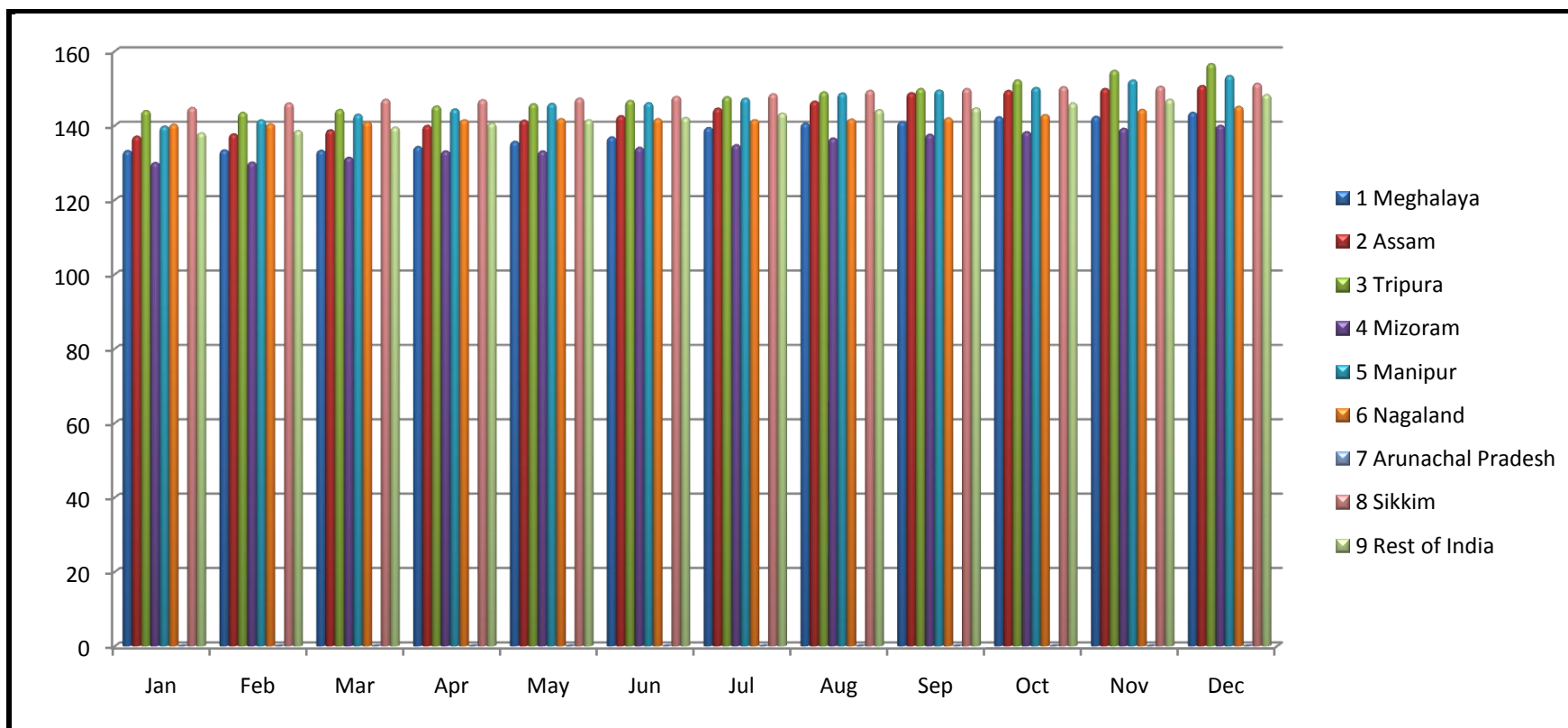
Sl. No.	State	Jan	Feb	Mar	Apr	May	Jun	Jul	Aug	Sep	Oct	Nov	Dec
1	Meghalaya	136.6	136.6	136.1	136.1	137.4	138	140	141.3	141.2	141.2	142.3	144.2
2	Assam	142.7	142.8	142.9	143.1	144.3	144.8	146.8	148.1	150.3	151.2	152.1	154
3	Tripura	147.7	147.7	148.5	150.6	151.1	152.8	155.4	156.6	157.2	158.3	159.8	162
4	Mizoram	133.5	133.7	134.6	135.1	135.8	136.4	137.6	139.1	140.4	141.3	142	143
5	Manipur	158.2	159.6	161.4	163.7	164.8	165.6	166	166.7	168.4	169.9	170.8	172
6	Nagaland	151.7	152.6	152.9	152.4	153	153.1	152.7	152.9	153.3	153.7	154.9	156
7	Arunachal Pradesh	-	-	-	-	-	-	157.9	158	158	-	-	168.8
8	Sikkim	148.6	147.8	147.8	147.8	148	148.5	148.7	151.2	153.3	154.9	155.2	157

Table 4.8 Combine (Rural + Urban) Consumer Price Index Numbers of Meghalaya and Rest of North East Indian States for the year 2019.



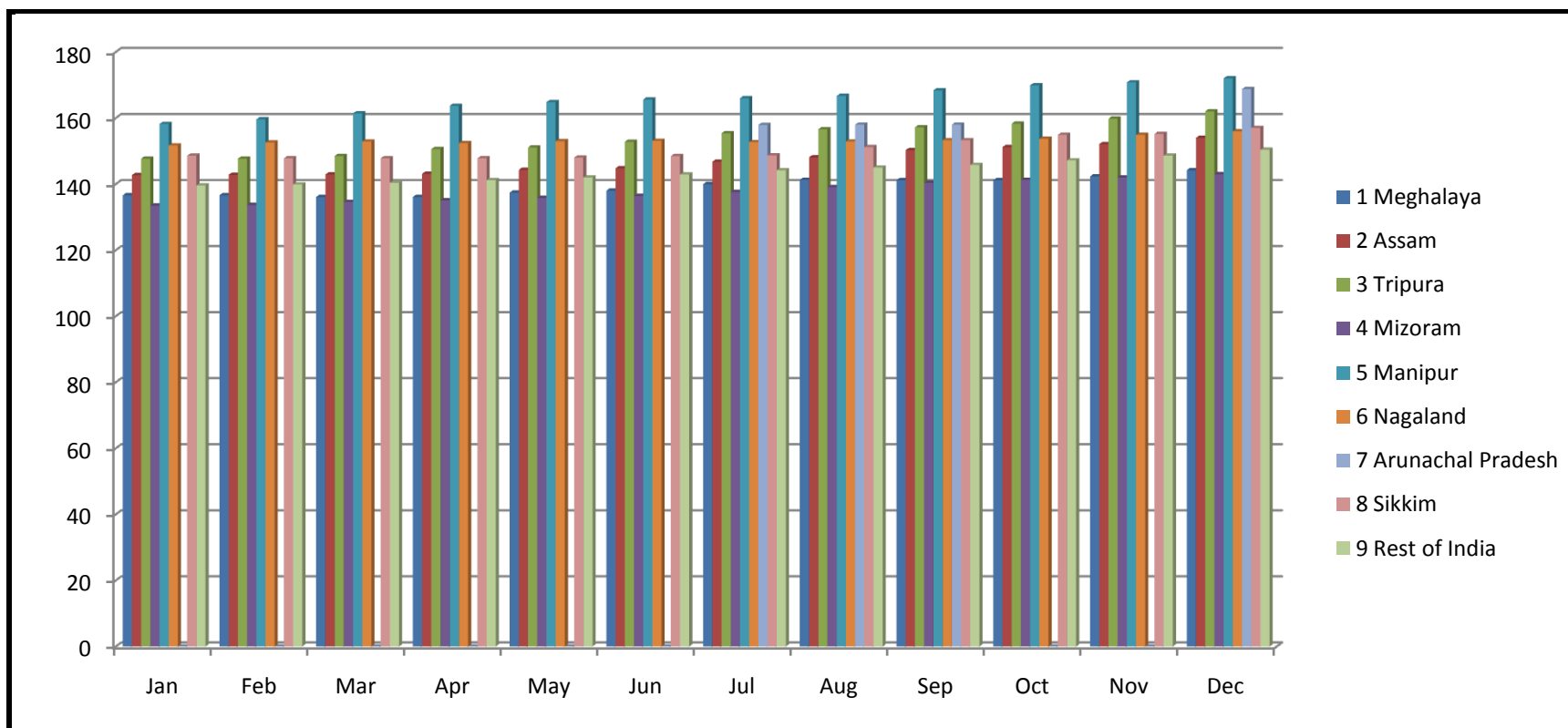
Sl. No.	State	Jan	Feb	Mar	Apr	May	Jun	Jul	Aug	Sep	Oct	Nov	Dec
1	Meghalaya	138.1	138	137.3	136.9	138.1	138.5	140.2	141.6	141.3	140.6	142.3	144.5
2	Assam	144.2	144.1	144	143.9	145	145.4	147.4	148.5	150.7	151.7	152.7	154.8
3	Tripura	149	149.2	150	152.5	153	154.9	158.1	159.2	159.7	160.4	161.5	163.9
4	Mizoram	139.1	139.7	139.7	139.9	140	140.1	141.9	143.1	144.7	146.1	146.5	147.7
5	Manipur	166.7	168	169.9	172.6	173.5	174.7	174.6	175.1	177.2	179	179.4	180.6
6	Nagaland	160.2	161.7	161.7	160.4	161.3	161.5	161	161.1	161.7	161.6	162.7	164
7	Arunachal Pradesh	160.4	158.9	157.2	156.5	157.3	158.2	157.9	158	158	158.5	158.8	168.8
8	Sikkim	150.4	148.7	148.2	148.2	148.4	148.9	148.8	152.1	155	157.1	157.5	159.8
9	Rest of India	141	141	141.2	141.7	142.4	143.6	144.9	145.7	146.7	148.3	149.9	152.3

Table 4.9 Rural Consumer Price Index Numbers of North East India and Rest of India for the year 2019.



Sl. No.	State	Jan	Feb	Mar	Apr	May	Jun	Jul	Aug	Sep	Oct	Nov	Dec
1	Meghalaya	133.2	133.4	133.3	134.3	135.7	136.9	139.4	140.6	141	142.3	142.4	143.5
2	Assam	137.1	137.7	138.8	140	141.4	142.6	144.6	146.5	148.8	149.4	149.9	150.7
3	Tripura	144	143.5	144.3	145.2	145.8	146.7	147.7	149	149.9	152.2	154.8	156.6
4	Mizoram	130	130.1	131.4	133.1	133.1	134.1	134.8	136.6	137.6	138.3	139.2	140
5	Manipur	139.8	141.5	143	144.4	145.9	146.1	147.3	148.7	149.5	150.2	152.2	153.4
6	Nagaland	140.3	140.4	140.9	141.5	141.8	141.8	141.5	141.7	142	142.9	144.3	145.1
7	Arunachal Pradesh	-	-	-	-	-	-	-	-	-	-	-	-
8	Sikkim	144.8	146	147	146.9	147.3	147.8	148.5	149.4	149.9	150.4	150.5	151.3
9	Rest of India	138	138.6	139.5	140.6	141.5	142.1	143.3	144.2	144.7	146	147	148.3

Table 4.10 Urban Consumer Price Index Numbers of North East India and Rest of India for the year 2019.



Sl. No.	State	Jan	Feb	Mar	Apr	May	Jun	Jul	Aug	Sep	Oct	Nov	Dec
1	Meghalaya	136.6	136.6	136.1	136.1	137.4	138	140	141.3	141.2	141.2	142.3	144.2
2	Assam	142.7	142.8	142.9	143.1	144.3	144.8	146.8	148.1	150.3	151.2	152.1	154
3	Tripura	147.7	147.7	148.5	150.6	151.1	152.8	155.4	156.6	157.2	158.3	159.8	162
4	Mizoram	133.5	133.7	134.6	135.1	135.8	136.4	137.6	139.1	140.4	141.3	142	143
5	Manipur	158.2	159.6	161.4	163.7	164.8	165.6	166	166.7	168.4	169.9	170.8	172
6	Nagaland	151.7	152.6	152.9	152.4	153	153.1	152.7	152.9	153.3	153.7	154.9	156
7	Arunachal Pradesh	-	-	-	-	-	-	157.9	158	158	-	-	168.8
8	Sikkim	148.6	147.8	147.8	147.8	148	148.5	148.7	151.2	153.3	154.9	155.2	157
9	Rest of India	139.6	139.9	140.4	141.2	142	142.9	144.2	145	145.8	147.2	148.6	150.4

Table 4.11 Combine (Rural + Urban) Consumer Price Index Numbers of North East India and Rest of India for the year 2019.

Acknowledgement: -

Officials

Director – Smt.A.M.Laloo
Joint Director – Shri.V.E.Iaphniaw

Price Section

Research Officer – Shri.D.T.N.Sangma
Primary Investigator – Shri.I.Dohling
Primary Investigator – Smt.J.Nongrum
Primary Investigator – Shri.B.G.Momin

Other officials of all the districts who have been involved in Price collection.