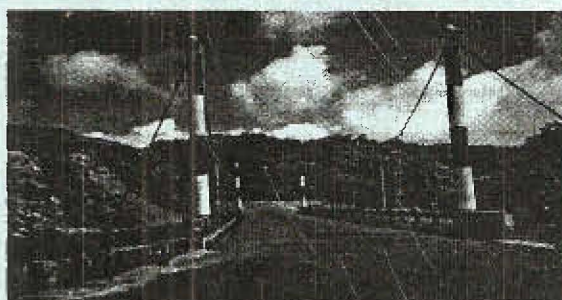
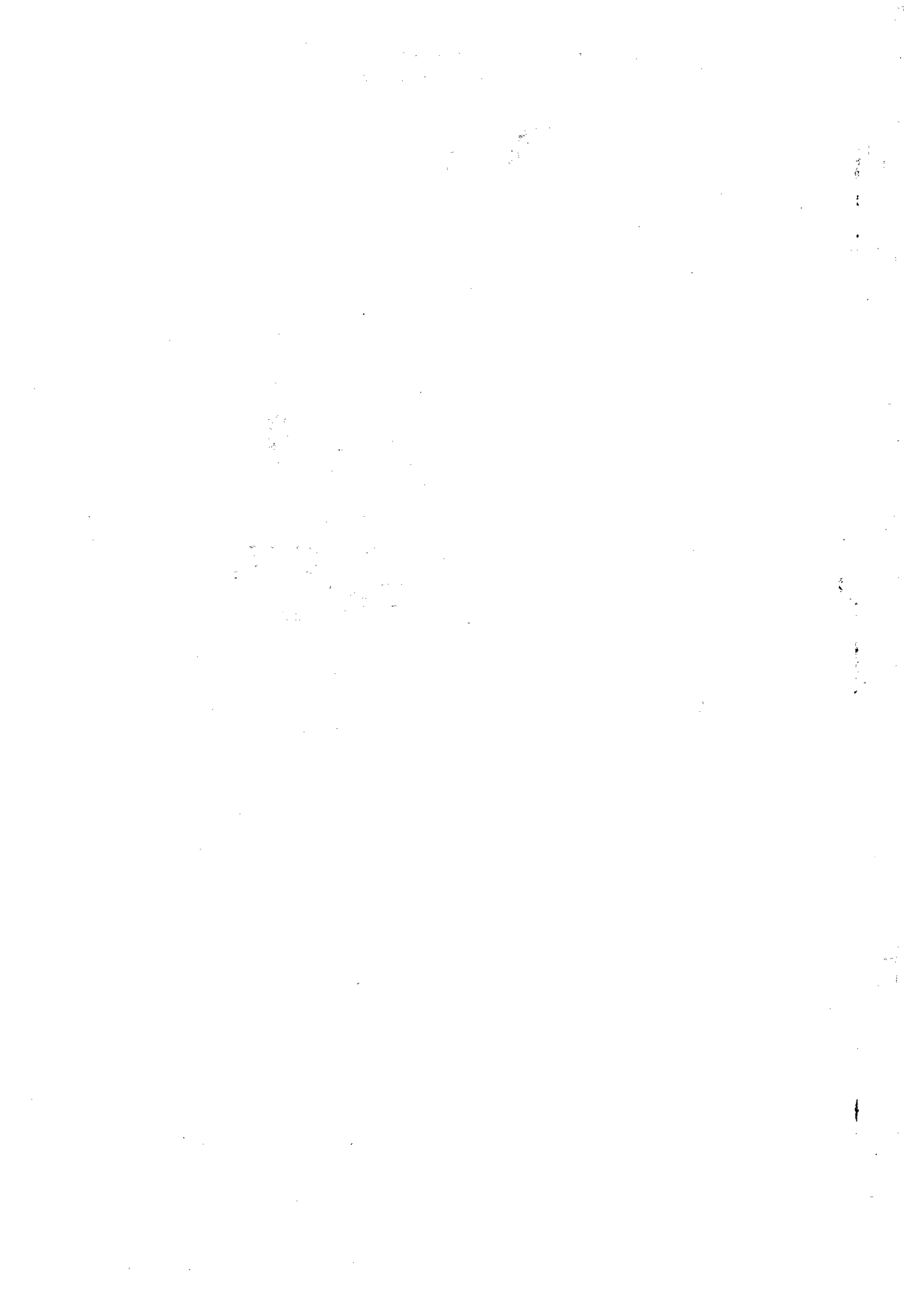


# MEGHALAYA

*ESTIMATES*  
**GROSS FIXED CAPITAL FORMATION  
(PUBLIC SECTOR)**  
*1996-97 TO 2000-2001*



**DIRECTORATE OF ECONOMICS & STATISTICS  
GOVERNMENT OF MEGHALAYA**



## PREFACE

The present report on the estimates of Gross Fixed Capital Formation (GFCF) in public sector at Current Prices is for the years 1996-97 to 2000-2001. The present publication is the third in series and has been prepared in accordance with the guidance provided by the Central Statistical Organisation, Government of India. The estimates cover the sectors of the economy related to public sector only.

This publication is prepared by the State Income Division of this Directorate and suggestions for improvement of the same would be most welcome.

The cooperation by various Departments, Autonomous District Councils and Municipal Boards is gratefully acknowledged.

Dated : Shillong.  
The 16<sup>th</sup> June, 2003

( W. L. Lyngdoh )  
DIRECTOR  
Economics & Statistics  
Meghalaya :: Shillong.

10-11-12

10-11-12

10-11-12

## CONTENTS

	Page
<b><u>PART – I</u></b>	
Introduction	1-3
<b><u>PART – II</u></b>	
Table – 1	4
Table – 2	4
Table – 3	5
Table – 4	6-10
<b><u>PART – III</u></b>	
Annexure I	11 – 13
Annexure II	14 - 16
Annexure III	17 – 19
Annexure IV	20 – 22
Annexure V	22

\*\*\*\*\*



## PART - I INTRODUCTION

Capital Formation is considered as a barometer to measure the growth of the productive capacity of the economy. As such, it is of vital importance when efforts are made through plan programmes to uplift the economy. The higher the rate in growth of Capital Formation, the higher would be the productive capacity of the economy.

### **CONCEPT AND DEFINITION :**

Gross Fixed Capital Formation represents the gross value of goods which are added to the fixed domestic capital stock during an accounting year. It comprises expenditure on acquisition as well own account production of fixed assets. The case of administrative departments of the Government and Departmental enterprises gross fixed capital formation is classified into buildings, roads, bridges, other constructions, transport machineries and equipments. Each of them is composed of new outlays and renewal of or replacements which together give gross fixed capital formation. In case of Non-departmental enterprises, Gross Fixed Capital Formation, comprises expenditure during the year on residential and non-residential buildings, other construction, machinery and equipment, transport equipment, capital work in progress and expenditure during construction.

In other words, gross fixed capitals formation refers to aggregate of gross addition to the fixed assets in stocks during a period of account. Fixed assets comprise of buildings, roads and bridges, other construction, machinery and equipment and transport equipment.

Net Capital Formation is distinguished from Gross Capital Formation in that, it is measured after allowances are made for consumption of fixed capital which includes foreseen obsolescence and accidental damage to the extent provided by the enterprise. Total Capital Formation can be broadly classified up to fixed capital formation and change in stock of raw materials semi finished and finished goods.

### **COVERAGE :**

This report deals with the Gross fixed capital formation of the Public sector only i.e. Government Administrative Department, Departmental Enterprises, Non-Departmental Commercial undertaking and Local Bodies.

Public Sector plays a vital role in the growth and development of the State and their impact on economy is significant. Based on the guidelines provided by Central Statistical Organisation and keeping in view the organizational structure of the activities existing, the public sector is classified into the following groups :-

- (a) **Producers of Government Services** viz. Administrative departments of the government, comprising government departments, offices and other bodies of the Central, State and Local authorities, whose functions are to organize for the community, but do not normally sell those common services which cannot be otherwise conveniently and economically provided.
- (b) **Departmental Enterprises** viz. Un-incorporated enterprises owned, controlled and run directly by Government.
- (c) **Non-Departmental Enterprises** viz. Financial and Non-Financial Government Companies, Subsidiaries of Government Companies and statutory Corporations set up under special enactment of parliament and / or State Legislatures.

## METHODOLOGY

Estimates of Gross Fixed Capital Formation have been prepared as per methodology provided by Central Statistical Organisation by type of assets and industry of use. By type of assets, Gross Fixed Capital Formation refers to gross addition of fixed assets in stock during the accounting year under the following heads:

### 1. Construction.

- (a) Buildings : Buildings include residential and non-residential structures. All expenditure on new construction and major alterations to residential and non-residential buildings including all costs of permanent fixtures has been treated as capital expenditure. Non-residential buildings include buildings and structures which are entirely or primarily used for industrial or commercial purposes e.g. industrial buildings, office buildings, hotels, etc.
- (b) Road and Bridges : Expenditure on construction of Roads, bridges and culverts, etc.
- (c) Other Construction : Other construction includes construction and maintenance expenditure on sewer, parking facilities, pipelines, electricity, transmission lines, telephone, telegraph lines, dams, irrigation works, afforestation, land reclamation etc.

### 2. Machinery and Equipment

- (a) Plants and Machinery : The items cover all expenditure incurred on acquisition of new power generating machinery, agriculture machinery, industrial machinery, tools and implements used in Departmental and Non departmental enterprises. All expenditure on office machinery equipment and instruments have also been covered under alteration and improvements in such above machinery and equipment are also included.
- (b) Transport Equipment : It includes expenditure on transport equipment, motor cars, trucks, commercial vehicles etc. Outlays on major alteration in the existing transport equipment are also considered for estimation of Gross Fixed Capital Formation.

Estimates of Gross Capital Formation by industry of use have also been prepared as per the following industry groups:

- i. Agriculture and allied activities.
- ii. Forestry and logging.
- iii. Fishing.
- iv. Mining and Quarrying.
- v. Manufacturing.
- vi. Construction.
- vii. Electricity, gas and water supply.
- viii. Transport, storage and communication.
- ix. Banking and Insurance.
- x. Trade, hotels and restaurants.
- xi. Public Administration.
- xii. Other Services.



Estimates of Gross Fixed Capital Formation in respect of Government Administration Departments, and Departmental Enterprises are prepared from the data available in the budget for Public Sector Enterprises/Companies and Local bodies from their annual statement of accounts.

Addition to non reproducible tangible assets such as land, mineral deposits and the natural growth of the standing timber have not been included in Gross Fixed Capital Formation. However, outlays on improvements of land and development or extension of mining sites, timber teaks and plantations are part of capital formation. The outlays on incomplete construction works incurred during the period are included in the estimates of the fixed assets :-

### **List of Non-Departmental Enterprises**

1. Meghalaya Industrial Development Corporation.
2. Meghalaya State Warehousing Development Corporation.
3. Mawmluh Cherra Cement Ltd.
4. Meghalaya Government Construction Ltd.
5. Forest Development Corporation Ltd.
6. Meghalaya State Co-operative Marketing and Consumer's Federation Ltd.
7. Meghalaya Handlooms and Handicrafts Development Corporation.
8. Meghalaya State Electricity Board.
9. Meghalaya Transport Corporation.
10. Meghalaya Tourism Development Corporation Ltd.
11. Meghalaya Mineral Development Corporation.

### **List of Local Bodies**

1. Autonomous District Council, Jaintia Hills.
2. Autonomous District Council, Khasi Hills.
3. Autonomous District Council, Garo Hills.
4. Municipal Boards.

PART - II

TABLE - 1

GROSS FIXED CAPITAL FORMATION OF PUBLIC SECTOR IN MEGHALAYA  
BY INSTITUTIONAL SECTOR

(Rs.in Lakh)

Year	Government Administrative Departments	Departmental Enterprises (DCU)	Non- Departmental Enterprises (NDCU)	Local Bodies	Central Govt. Institutional Sector	Total
1	2	3	4	5	6	7
1996-97	18232	1613	694	325	5861	26725
1997-98	14146	806	4752	325	9218	29247
1998-99	16777	964	1239	294	10452	29726
1999-2000	18028	841	663	351	18706	38589
2000-2001	24271	950	2465	707	5078	33471

TABLE - 2

GROSS FIXED CAPITAL FORMATION OF PUBLIC SECTOR IN MEGHALAYA  
BY TYPE OF ASSETS

(Rs.in Lakh)

Year	Building	Roads & Bridges	Other Construction	Plant & Machinery	Transport Equipment	Total Supra Regional Sector	Total G.F.C.F
1	2	3	4	5	6	7	8
1996-97	3775	7527	8138	645	779	5861	26725
1997-98	3184	6943	8699	757	446	9218	29247
1998-99	2870	7211	6771	1819	603	10452	29726
1999-2000	3428	8499	6001	1042	913	18706	38589
2000-2001	3948	9653	11367	2221	1204	5078	33471

TABLE - 3

**GROSS FIXED CAPITAL FORMATION OF PUBLIC SECTOR IN MEGHALAYA  
BY INDUSTRY OF USE.**

(Rs. In Lakh)

Sl. No	Industry of Use	Years				
		1996-97	1997-98	1998-99	1999-2000	2000-2001
1	2	3	4	5	6	7
1	Agriculture and Allied activities	2173	848	1120	829	722
2	Forest & Logging	729	168	285	285	422
3	Fishing	30	17	16	17	22
4	Mining and Quarrying	25	25	20	23	20
5	Manufacturing	138	248	148	158	323
6	Construction	8371	7243	7383	8323	10064
7	Electricity, Gas & Water supply	4415	7464	4838	4585	7655
8	Transport, Storage and Communication	2505	6360	8219	12948	3314
9	Trade, Hotels & Restaurant	-	-	-	-	212
10	Banking and Insurance	N.A	2217	884	14	N.A
11	Public Administration	6720	3232	5082	5932	9018
12	Other Services	1619	1425	1731	1695	1699
	<b>Total</b>	<b>26725</b>	<b>29247</b>	<b>29726</b>	<b>38589</b>	<b>33471</b>

TABLE - 4

**GROSS FIXED CAPITAL FORMATION OF PUBLIC SECTOR IN MEGHALAYA  
BY INDUSTRY OF USE AND TYPE OF ASSETS  
FOR THE YEAR 1996-97**

(Rs. In Lakh)

Sl. No	Industry of Use	Building	Road & Bridges	Other Construction	Plant & Machinery	Transport Equipment	Total Supra Regional	G.F.C.F Col.2 to 6
1	2	3	4	5	6	7	8	9
1	Agriculture & Allied Activities	191	14	1628	283	57	-	2173
2	Forest & Logging	3	-	721	3	2	-	729
3	Fishing	12	-	18	-	-	-	30
4	Mining and Quarrying	-	-	-	9	16	-	25
5	Manufacturing	68	-	32	9	29	-	138
6	Construction	1565	6672	118	1	15	-	8371
7	Electricity, Gas & Water supply	84	-	4173	136	22	-	4415
8	Transport, Storage and Communication	5	-	-	2	5	2493	2505
9	Trade, Hotels & Restaurant	-	-	-	-	-	-	-
10	Banking and Insurance	-	-	-	-	-	-	-
11	Public Administration	403	841	1448	104	556	3368	6720
12	Other Services	1444	-	-	98	77	-	1619
	<b>Total</b>	<b>3775</b>	<b>7527</b>	<b>8138</b>	<b>645</b>	<b>779</b>	<b>5861</b>	<b>26725</b>

TABLE - 4 (Contd...)

**GROSS FIXED CAPITAL FORMATION OF PUBLIC SECTOR IN MEGHALAYA  
BY INDUSTRY OF USE AND TYPE OF ASSETS  
FOR THE YEAR 1997-98**

(Rs. In Lakh)

Sl. No	Industry of Use	Building	Road & Bridges	Other Construction	Plant & Machinery	Transport Equipment	Total Supra Regional	G.F.C.F Col.2 to 6
1	2	3	4	5	6	7	8	9
1	Agriculture & Allied Activities	110	-	697	12	29	-	848
2	Forest & Logging	5	3	158	1	1	-	168
3	Fishing	5	-	8	4	-	-	17
4	Mining and Quarrying	-	-	-	18	7	-	25
5	Manufacturing	163	-	6	71	8	-	248
6	Construction	1015	6153	55	5	15	-	7243
7	Electricity, Gas & Water supply	265	88	6740	358	13	-	7464
8	Transport, Storage and Communication	4	-	-	8	5	6343	6360
9	Trade, Hotels & Restaurant	-	-	-	-	-	-	-
10	Banking and Insurance	-	-	-	9	4	2204	2217
11	Public Administration	376	699	1032	135	319	671	3232
12	Other Services	1241	-	3	136	45	-	1425
	<b>Total</b>	<b>3184</b>	<b>6943</b>	<b>8699</b>	<b>757</b>	<b>446</b>	<b>9218</b>	<b>29247</b>

TABLE - 4 (Contd...)

**GROSS FIXED CAPITAL FORMATION OF PUBLIC SECTOR IN MEGHALAYA  
BY INDUSTRY OF USE AND TYPE OF ASSETS FOR THE YEAR 1998-99**

(Rs. In Lakh)

Sl. No	Industry of Use	Building	Road & Bridges	Other Construction	Plant & Machinery	Transport Equipment	Total Supra Regional	G.F.C.F Col.2 to 6
1	2	3	4	5	6	7	8	9
1	Agriculture & Allied Activities	152	-	938	24	6	-	1120
2	Forest & Logging	-	3	217	58	7	-	285
3	Fishing	4	-	10	2	-	-	16
4	Mining and Quarrying	-	-	-	14	6	-	20
5	Manufacturing	70	-	-	61	17	-	148
6	Construction	1024	6234	109	6	10	-	7383
7	Electricity, Gas & Water supply	143	86	4194	402	13	-	4838
8	Transport, Storage and Communication	2	1	8	3	5	8200	8219
9	Trade, Hotels & Restaurant	-	-	-	-	-	-	-
10	Banking and Insurance	-	-	-	-	4	880	884
11	Public Administration	162	887	1295	870	496	1372	5082
12	Other Services	1313	-	-	379	39	-	1731
	<b>Total</b>	<b>2870</b>	<b>7211</b>	<b>6771</b>	<b>1819</b>	<b>603</b>	<b>10452</b>	<b>29726</b>

TABLE - 4 (Contd...)

**GROSS FIXED CAPITAL FORMATION OF PUBLIC SECTOR IN MEGHALAYA  
BY INDUSTRY OF USE AND TYPE OF ASSETS  
FOR THE YEAR 1999-2000**

(Rs. In Lakh)

Sl. No	Industry of Use	Building	Road & Bridges	Other Construction	Plant & Machinery	Transport Equipment	Total Supra Regional	G.F.C.F Col.2 to 6
1	2	3	4	5	6	7	8	9
1	Agriculture & Allied Activities	6	-	716	84	23	-	829
2	Forest & Logging	19	2	250	-	14	-	285
3	Fishing	4	-	11	2	-	-	17
4	Mining and Quarrying	-	-	-	17	6	-	23
5	Manufacturing	85	-	25	41	7	-	158
6	Construction	389	7726	195	2	11	-	8323
7	Electricity, Gas & Water supply	355	77	3992	126	35	-	4585
8	Transport, Storage and Communication	2	-	-	-	-	12946	12948
9	Trade, Hotels & Restaurant	-	-	-	-	-	-	-
10	Banking and Insurance	-	-	-	3	11	502	516
11	Public Administration	1134	648	806	615	749	5258	9210
12	Other Services	1434	46	6	152	57	-	1695
	<b>Total</b>	<b>3428</b>	<b>8499</b>	<b>6001</b>	<b>1042</b>	<b>913</b>	<b>18706</b>	<b>38589</b>

TABLE - 4 (Contd...)

**GROSS FIXED CAPITAL FORMATION OF PUBLIC SECTOR IN MEGHALAYA  
BY INDUSTRY OF USE AND TYPE OF ASSETS  
FOR THE YEAR 2000-2001**

(Rs. In Lakh)

Sl. No	Industry of Use	Building	Road & Bridges	Other Construction	Plant & Machinery	Transport Equipment	Total Supra Regional	G.F.C.F Col.2 to 6
1	2	3	4	5	6	7	8	9
1	Agriculture & Allied Activities	90	-	533	77	22	-	722
2	Forest & Logging	55	2	353	-	12	-	422
3	Fishing	22	-	-	-	-	-	22
4	Mining and Quarrying	-	-	-	14	6	-	20
5	Manufacturing	3	-	287	28	5	-	323
6	Construction	651	8517	884	2	10	-	10064
7	Electricity, Gas & Water supply	347	94	6809	326	79	-	7655
8	Transport, Storage and Communication	1	3	21	16	2	3271	3314
9	Trade, Hotels & Restaurant	210	-	-	2	-	-	212
10	Banking and Insurance	-	-	-	-	-	-	-
11	Public Administration	1377	1037	2478	1413	906	1807	9018
12	Other Services	1192	-	2	343	162	-	1699
	<b>Total</b>	<b>3948</b>	<b>9653</b>	<b>11367</b>	<b>2221</b>	<b>1204</b>	<b>5078</b>	<b>33471</b>



## PART - III

## ANNEXURE - 1

**GROSS FIXED CAPITAL FORMATION ( GOVERNMENT ADMINISTRATION )  
BY INDUSTRY OF USE AND TYPE OF ASSETS  
FOR THE YEAR 1996-97**

(Rs. in Lakh)

Sl. No	Industry of Use	Building	Roads & Bridges	Other Construction	Plants and Machinery	Transport	Total
1	2	3	4	5	6	7	8
1	Agriculture	191	14	535	280	57	1077
2	Forestry	-	-	217	-	-	217
3	Fishing	12	-	18	-	-	30
4	Mining	-	-	-	9	16	25
5	Manufacturing	68	-	32	7	-	107
6	Construction	1492	6672	-	1	15	8180
7	Electricity & Water Supply	80	-	3600	53	-	3733
8	Transport, Storage & Communication	-	-	-	-	-	-
9	Trade, Hotels & Restaurant	-	-	-	-	-	-
10	Public Administration	402	811	1410	100	521	3244
11	Other Services	1444	-	-	98	77	1619
	<b>Total</b>	<b>3689</b>	<b>7497</b>	<b>5812</b>	<b>548</b>	<b>686</b>	<b>18232</b>

**ANNEXURE – 1 (Contd...)**

**GROSS FIXED CAPITAL FORMATION ( GOVERNMENT ADMINISTRATION )  
BY INDUSTRY OF USE AND TYPE OF ASSETS FOR THE YEAR 1997-98**

( Rs. in Lakh )

Sl. No	Industry of Use	Building	Roads & Bridges	Other Construction	Plants and Machinery	Transport	Total
1	2	3	4	5	6	7	8
1	Agriculture	110	-	-	12	29	151
2	Forestry	-	-	18	-	-	18
3	Fishing	5	-	8	4	-	17
4	Mining	-	-	-	18	7	25
5	Manufacturing	163	-	-	7	-	170
6	Construction	66	88	2539	67	-	2760
7	Electricity & Water Supply	908	6153	4	5	15	7085
8	Transport, Storage & Communication	-	-	-	3	3	6
9	Trade, Hotels & Restaurant	-	-	-	-	-	-
10	Public Administration	376	647	1027	121	318	2489
11	Other Services	1241	-	3	136	45	1425
	<b>Total</b>	<b>2869</b>	<b>6888</b>	<b>3599</b>	<b>373</b>	<b>417</b>	<b>14146</b>

**ANNEXURE – 1 (Contd...)**

**GROSS FIXED CAPITAL FORMATION ( GOVERNMENT ADMINISTRATION )  
BY INDUSTRY OF USE AND TYPE OF ASSETS FOR THE YEAR 1998-99**

( Rs. in Lakh )

Sl. No	Industry of Use	Building	Roads & Bridges	Other Construction	Plants and Machinery	Transport	Total
1	2	3	4	5	6	7	8
1	Agriculture	152	-	211	24	6	393
2	Forestry	-	-	-	58	4	62
3	Fishing	4	-	10	2	-	16
4	Mining	-	-	-	14	6	20
5	Manufacturing	70	-	-	9	3	82
6	Construction	117	86	3294	153	-	3650
7	Electricity & Water Supply	951	6234	-	3	10	7198
8	Transport, Storage & Communication	-	-	7	3	4	14
9	Trade, Hotels & Restaurant	-	-	-	-	-	-
10	Public Administration	162	820	1277	870	482	3611
11	Other Services	1313	-	-	379	39	1731
	<b>Total</b>	<b>2769</b>	<b>7140</b>	<b>4799</b>	<b>1515</b>	<b>554</b>	<b>16777</b>

**ANNEXURE - 1 (Contd...)**

**GROSS FIXED CAPITAL FORMATION ( GOVERNMENT ADMINISTRATION )  
BY INDUSTRY OF USE AND TYPE OF ASSETS FOR THE YEAR 1999-2000**

( Rs. in Lakh )

Sl. No	Industry of Use	Building	Roads & Bridges	Other Construction	Plants and Machinery	Transport	Total
1	2	3	4	5	6	7	8
1	Agriculture	6	-	73	84	23	186
2	Forestry	-	-	88	-	12	100
3	Fishing	4	-	11	2	-	17
4	Mining	-	-	-	17	6	23
5	Manufacturing	85	-	-	8	3	96
6	Electricity & Water Supply	347	77	3527	14	-	3965
7	Construction	330	7726	-	2	11	8069
8	Transport, Storage & Communication	-	-	-	-	-	-
9	Trade, Hotels & Restaurant	-	-	-	-	-	-
10	Banking & Insurance	-	-	-	-	-	-
11	Public Administration	1134	648	795	614	734	3925
12	Other Services	1433	-	5	152	57	1647
	<b>Total</b>	<b>3339</b>	<b>8451</b>	<b>4499</b>	<b>893</b>	<b>846</b>	<b>18028</b>

**ANNEXURE - 1 (Contd...)**

**GROSS FIXED CAPITAL FORMATION ( GOVERNMENT ADMINISTRATION )  
BY INDUSTRY OF USE AND TYPE OF ASSETS FOR THE YEAR 2000-2001**

( Rs. in Lakh )

Sl. No	Industry of Use	Building	Roads & Bridges	Other Construction	Plants and Machinery	Transport	Total
1	2	3	4	5	6	7	8
1	Agriculture	90	-	57	75	22	244
2	Forestry	25	-	148	-	10	183
3	Fishing	22	-	-	-	-	22
4	Mining & Quarrying	-	-	-	14	6	20
5	Manufacturing	3	-	1	6	-	10
6	Electricity, Gas & Water Supply	252	94	5094	-	-	5440
7	Construction	528	8517	528	2	10	9585
8	Transport, Storage & Communication	-	-	21	15	2	38
9	Trade, Hotels & Restaurant	-	-	-	-	-	-
10	Banking & Insurance	-	-	-	-	-	-
11	Public Administration	1376	904	2473	1402	875	7030
12	Other Services	1192	-	2	343	162	1699
	<b>Total</b>	<b>3488</b>	<b>9515</b>	<b>8324</b>	<b>1857</b>	<b>1087</b>	<b>24271</b>

**ANNEXURE – II**

**GROSS FIXED CAPITAL FORMATION OF DEPARTMENTAL ENTERPRISE  
(D.C.U) BY INDUSTRY OF USE AND TYPE OF ASSETS  
FOR THE YEAR 1996-97**

(Rs. in Lakh)

Sl. No	Industry of Use	Building	Roads & Bridges	Other Construction	Plants and Machinery	Transport	Total
1	2	3	4	5	6	7	8
1	Agriculture	-	-	1078	3	-	1081
2	Forestry	-	-	497	3	1	501
3	Fishing	-	-	-	-	-	-
4	Mining & Quarrying	-	-	-	-	-	-
5	Manufacturing	-	-	-	2	29	31
6	Construction	-	-	-	-	-	-
7	Electricity, Gas & Water Supply	-	-	-	-	-	-
8	Transport, Storage & Communication	-	-	-	-	-	-
9	Trade, Hotels & Restaurant	-	-	-	-	-	-
10	Banking & Insurance	-	-	-	-	-	-
11	Other Services	-	-	-	-	-	-
	<b>Total</b>			<b>1575</b>	<b>8</b>	<b>30</b>	<b>1613</b>

**ANNEXURE – II (Contd...)**

**GROSS FIXED CAPITAL FORMATION OF DEPARTMENTAL ENTERPRISE  
(D.C.U) BY INDUSTRY OF USE AND TYPE OF ASSETS  
FOR THE YEAR 1997-98**

(Rs. in Lakh)

Sl. No	Industry of Use	Building	Roads & Bridges	Other Construction	Plants and Machinery	Transport	Total
1	2	3	4	5	6	7	8
1	Agriculture	-	-	647	-	-	647
2	Forestry	-	3	133	-	1	137
3	Fishing	-	-	-	-	-	-
4	Mining & Quarrying	-	-	-	-	-	-
5	Manufacturing	-	-	-	22	-	22
6	Construction	-	-	-	-	-	-
7	Electricity, Gas & Water Supply	-	-	-	-	-	-
8	Transport						
9	Storage	-	-	-	-	-	-
10	Trade, Hotels & Restaurant	-	-	-	-	-	-
11	Financial Services	-	-	-	-	-	-
12	Other Services	-	-	-	-	-	-
	<b>Total</b>		<b>3</b>	<b>780</b>	<b>22</b>	<b>1</b>	<b>806</b>

**ANNEXURE – II (Contd...)**

**GROSS FIXED CAPITAL FORMATION OF DEPARTMENTAL ENTERPRISE  
(D.C.U) BY INDUSTRY OF USE AND TYPE OF ASSETS  
FOR THE YEAR 1998-99**

(Rs. in Lakh)

Sl. No	Industry of Use	Building	Roads & Bridges	Other Construction	Plants and Machinery	Transport	Total
1	2	3	4	5	6	7	8
1	Agriculture	-	-	727	-	-	727
2	Forestry	-	3	208	-	3	214
3	Fishing	-	-	-	-	-	-
4	Mining & Quarrying	-	-	-	-	-	-
5	Manufacturing	-	-	-	21	2	23
6	Construction	-	-	-	-	-	-
7	Electricity, Gas & Water Supply	-	-	-	-	-	-
8	Transport	-	-	-	-	-	-
9	Storage	-	-	-	-	-	-
10	Trade, Hotels & Restaurant	-	-	-	-	-	-
11	Financial Services	-	-	-	-	-	-
12	Other Services	-	-	-	-	-	-
	<b>Total</b>		<b>3</b>	<b>935</b>	<b>21</b>	<b>5</b>	<b>964</b>

**ANNEXURE – II (Contd...)**

**GROSS FIXED CAPITAL FORMATION OF DEPARTMENTAL ENTERPRISE  
(D.C.U) BY INDUSTRY OF USE AND TYPE OF ASSETS  
FOR THE YEAR 1999-2000**

(Rs. in Lakh)

Sl. No	Industry of Use	Building	Roads & Bridges	Other Construction	Plants and Machinery	Transport	Total
1	2	3	4	5	6	7	8
1	Agriculture	-	-	643	-	-	643
2	Forestry	16	2	152	-	2	172
3	Fishing	-	-	-	-	-	-
4	Mining & Quarrying	-	-	-	-	-	-
5	Manufacturing	-	-	-	26	-	26
6	Construction	-	-	-	-	-	-
7	Electricity, Gas & Water Supply	-	-	-	-	-	-
8	Transport	-	-	-	-	-	-
9	Storage	-	-	-	-	-	-
10	Trade, Hotels & Restaurant	-	-	-	-	-	-
11	Financial Services	-	-	-	-	-	-
12	Other Services	-	-	-	-	-	-
	<b>Total</b>	<b>16</b>	<b>2</b>	<b>795</b>	<b>26</b>	<b>2</b>	<b>841</b>

## ANNEXURE – II (Contd...)

**GROSS FIXED CAPITAL FORMATION OF DEPARTMENTAL ENTERPRISE  
(D.C.U) BY INDUSTRY OF USE AND TYPE OF ASSETS  
FOR THE YEAR 2000-2001**

(Rs. in Lakh)

Sl. No	Industry of Use	Building	Roads & Bridges	Other Construction	Plants and Machinery	Transport	Total
1	2	3	4	5	6	7	8
1	Agriculture	-	-	476	2	-	478
2	Forestry	25	2	193	-	2	222
3	Fishing	-	-	-	-	-	-
4	Mining & Quarrying	-	-	-	-	-	-
5	Manufacturing	-	-	231	19	-	250
6	Electricity, Gas & Water Supply	-	-	-	-	-	-
7	Construction	-	-	-	-	-	-
8	Transport, Storage & Communication						
9	Trade, Hotels & Restaurant	-	-	-	-	-	-
10	Banking & Insurance	-	-	-	-	-	-
11	Public Administration	-	-	-	-	-	-
12	Other Services	-	-	-	-	-	-
	<b>Total</b>	<b>25</b>	<b>2</b>	<b>900</b>	<b>21</b>	<b>2</b>	<b>950</b>

**ANNEXURE – III**

**GROSS FIXED CAPITAL FORMATION OF NON-DEPARTMENTAL  
ENTERPRISE (N.D.C.U) FOR THE YEAR 1996-97 BY TYPE OF ASSETS AND  
INDUSTRY OF USE**

( Rs. in Lakh )

Sl. No	Industry of Use	Building	Roads & Bridges	Other Construction	Plants and Machinery	Transport	Total
1	2	3	4	5	6	7	8
1	Forestry	-	-	-	-	-	-
2	Manufacturing	-	-	-	-	-	-
3	Construction	-	-	-	-	-	-
4	Electricity	4	-	573	83	22	682
5	Transport	3	-	-	2	5	10
6	Storage	2	-	-	-	-	2
7	Trade	-	-	-	-	-	-
8	Financial Services	-	-	-	-	-	-
	<b>Total</b>	<b>9</b>	<b>-</b>	<b>573</b>	<b>85</b>	<b>27</b>	<b>694</b>

**ANNEXURE – III (Contd...)**

**GROSS FIXED CAPITAL FORMATION OF NON-DEPARTMENTAL  
ENTERPRISE (N.D.C.U) FOR THE YEAR 1997-98 BY TYPE OF ASSETS AND  
INDUSTRY OF USE**

( Rs. in Lakh )

Sl. No	Industry of Use	Building	Roads & Bridges	Other Construction	Plants and Machinery	Transport	Total
1	2	3	4	5	6	7	8
1	Forestry	-	-	-	-	-	-
2	Manufacturing	-	-	6	42	8	56
3	Construction	-	-	-	-	-	-
4	Electricity	199	-	4175	291	13	4678
5	Transport	2	-	-	1	5	3
6	Storage	2	-	-	-	-	2
7	Trade	-	-	-	-	-	-
8	Financial Services	-	-	-	9	4	13
	<b>Total</b>	<b>203</b>	<b>-</b>	<b>4181</b>	<b>343</b>	<b>25</b>	<b>4752</b>

**ANNEXURE – III (Contd...)**

**GROSS FIXED CAPITAL FORMATION OF NON-DEPARTMENTAL  
ENTERPRISE (N.D.C.U) FOR THE YEAR 1998-99 BY TYPE OF ASSETS AND  
INDUSTRY OF USE**

( Rs. in Lakh )

Sl. No	Industry of Use	Building	Roads & Bridges	Other Construction	Plants and Machinery	Transport	Total
1	2	3	4	5	6	7	8
1	Forestry	-	-	-	-	-	-
2	Manufacturing	-	-	-	31	12	43
3	Construction	-	-	-	-	-	-
4	Electricity	26	-	900	249	13	1188
5	Transport	-	-	-	-	-	-
6	Storage	2	1	1	-	-	4
7	Trade	-	-	-	-	-	-
8	Financial Services	-	-	-	-	4	4
	<b>Total</b>	<b>28</b>	<b>1</b>	<b>901</b>	<b>280</b>	<b>29</b>	<b>1239</b>

**ANNEXURE – III (Contd...)**

**GROSS FIXED CAPITAL FORMATION OF NON-DEPARTMENTAL  
ENTERPRISE (N.D.C.U) FOR THE YEAR 1999-2000 BY TYPE OF ASSETS AND  
INDUSTRY OF USE**

( Rs. in Lakh )

Sl. No	Industry of Use	Building	Roads & Bridges	Other Construction	Plants and Machinery	Transport	Total
1	2	3	4	5	6	7	8
1	Forestry	-	-	-	-	-	-
2	Manufacturing	-	-	25	7	4	36
3	Construction	-	-	-	-	-	-
4	Electricity	8	-	456	112	35	611
5	Transport	-	-	-	-	-	-
6	Storage	2	-	-	-	-	2
7	Trade	-	-	-	-	-	-
8	Financial Services	-	-	-	3	11	14
	<b>Total</b>	<b>10</b>	<b>-</b>	<b>481</b>	<b>122</b>	<b>50</b>	<b>663</b>



## ANNEXURE – III (Contd...)

**GROSS FIXED CAPITAL FORMATION OF NON-DEPARTMENTAL  
ENTERPRISE (N.D.C.U) FOR THE YEAR 2000-2001 BY TYPE OF ASSETS AND  
INDUSTRY OF USE**

(Rs. in Lakh)

Sl. No	Industry of Use	Building	Roads & Bridges	Other Construction	Plants and Machinery	Transport	Total
1	2	3	4	5	6	7	8
1	Agriculture	-	-	-	-	-	-
2	Forestry	-	-	-	-	-	-
3	Fishing	-	-	-	-	-	-
4	Mining & Quarrying	-	-	-	-	-	-
5	Manufacturing	-	-	55	3	5	63
6	Electricity, Gas & Water Supply	95	-	1680	326	79	2180
7	Construction	-	-	-	-	-	-
8	Transport, Storage & Communication	1	3	-	1	-	5
9	Trade, Hotels & Restaurant	210	-	-	2	-	212
10	Banking & Insurance	-	-	-	-	-	-
11	Public Administration	-	-	-	4	1	5
12	Other Services	-	-	-	-	-	-
	<b>Total</b>	<b>306</b>	<b>3</b>	<b>1735</b>	<b>336</b>	<b>85</b>	<b>2465</b>

**ANNEXURE – IV**

**GROSS FIXED CAPITAL FORMATION OF LOCAL BODIES BY TYPE OF ASSETS AND INDUSTRY OF USE  
YEAR – 1996-97**

(Rs. In lakh)

Sl. No	Industry of use	Building	Roads & Bridges	Other Construction	Plants and Machinery	Transport	Total
1	2	3	4	5	6	7	8
1	Administration	1	30	38	4	35	108
2	Forest	3	-	7	-	1	11
3	Construction	73	-	118	-	-	191
4	Water Supply	-	-	-	-	-	-
5	Agriculture	-	-	15	-	-	15
6	Other Services	-	-	-	-	-	-
	<b>Total</b>	<b>77</b>	<b>30</b>	<b>178</b>	<b>4</b>	<b>36</b>	<b>325</b>

**ANNEXURE – IV (Contd...)**

**GROSS FIXED CAPITAL FORMATION OF LOCAL BODIES BY TYPE OF ASSETS AND INDUSTRY OF USE  
YEAR – 1997-98**

(Rs. In lakh)

Sl. No	Industry of use	Building	Roads & Bridges	Other Construction	Plants and Machinery	Transport	Total
1	2	3	4	5	6	7	8
1	Agriculture & Allied	-	-	50	-	-	50
2	Forest	5	-	7	1	-	13
3	Fishing	-	-	-	-	-	-
4	Construction	107	-	51	-	-	158
5	Electricity, Gas & Water Supply	-	-	26	-	-	26
6	Transport	-	-	-	4	2	6
7	Public Administration	-	52	5	14	1	72
8	Other Services	-	-	-	-	-	-
	<b>Total</b>	<b>112</b>	<b>52</b>	<b>139</b>	<b>19</b>	<b>3</b>	<b>325</b>

**ANNEXURE – IV (Contd...)**

**GROSS FIXED CAPITAL FORMATION OF LOCAL BODIES BY TYPE OF ASSETS AND INDUSTRY OF USE  
YEAR – 1998-99**

(Rs. In lakh)

Sl. No	Industry of use	Building	Roads & Bridges	Other Construction	Plants and Machinery	Transport	Total
1	2	3	4	5	6	7	8
1	Agriculture & Allied	-	-	-	-	-	-
2	Forest	-	-	9	1	-	9
3	Fishing	-	-	-	-	-	-
4	Construction	73	-	109	3	-	185
5	Electricity, Gas & Water Supply	-	-	-	-	-	-
6	Transport	-	-	-	-	1	1
7	Public Administration	-	67	18	-	14	99
8	Other Services	-	-	-	-	-	-
	<b>Total</b>	<b>73</b>	<b>67</b>	<b>136</b>	<b>3</b>	<b>15</b>	<b>294</b>

**ANNEXURE – IV (Contd....)**

**GROSS FIXED CAPITAL FORMATION OF LOCAL BODIES BY TYPE OF ASSETS AND INDUSTRY OF USE  
YEAR – 1999-2000**

(Rs. In lakh)

Sl. No	Industry of use	Building	Roads & Bridges	Other Construction	Plants and Machinery	Transport	Total
1	2	3	4	5	6	7	8
1	Administration	-	-	11	1	15	27
2	Forest	3	-	10	-	-	13
3	Construction	59	-	195	-	-	254
4	Water Supply	-	-	9	-	-	9
5	Other Services	1	46	1	-	-	48
	<b>Total</b>	<b>63</b>	<b>46</b>	<b>226</b>	<b>1</b>	<b>15</b>	<b>351</b>

**ANNEXURE – IV (Contd....)**

**GROSS FIXED CAPITAL FORMATION OF LOCAL BODIES BY TYPE OF ASSETS AND INDUSTRY OF USE  
YEAR – 2000-2001**

(Rs. In lakh)

Sl. No	Industry of use	Building	Roads & Bridges	Other Construction	Plants and Machinery	Transport	Total
<i>1</i>	<i>2</i>	<i>3</i>	<i>4</i>	<i>5</i>	<i>6</i>	<i>7</i>	<i>8</i>
1	Administration	1	133	5	7	30	176
2	Forest	5	-	12	-	-	17
3	Construction	123	-	356	-	-	479
4	Water Supply	-	-	35	-	-	35
5	Other Services	-	-	-	-	-	-

**ANNEXURE – V**

**GROSS FIXED CAPITAL FORMATION FROM SUPRA-REGIONAL SECTORS**

Sl.No	Year	Communication	Banking & Insurance	Central Government	Total
<i>1</i>	<i>2</i>	<i>3</i>	<i>4</i>	<i>5</i>	<i>6</i>
1	1996-97	2493	N.A.	3368	5861
2	1997-98	6343	2204	671	9218
3	1998-99	8200	880	1372	10452
4	1999-2000	12946	502	5258	18706
5	2000-2001	3271	N.A.	1807	5078

