

PREFACE

The Census of Government Employees as on 31st March 2010 is the fourteenth in the series. The Directorate of Economics and Statistics, Government of Meghalaya, has been conducting the Census of State Government Employees since 1972, with an objective to assess the volume of employment in the State Government Departments/Offices and also to present an analysis characterised by their Status, Permanent and Temporary, Caste/Tribe, Sex, Community, Urban-Rural, Group of Employees, Educational Qualification, Pay Structure and other related information.

The data for the Census under report were collected from State Government's Departments/Offices through prescribed proforma with coordination of the District Statistical Officers at the Districts.

For the first time data entry for this Report have been started using the web based application software developed by NIC but due to late receipt of relevant information from some departments/offices the release of this Report has been delayed. I would like to thank Shri. T. Dkhar, State Informatic Office NIC, Meghalaya and Shri. P. Nongpiur Senior System Analyst for extending the technical help and assistance in this regard.

The Directorate of Economics & Statistics acknowledges with thanks the cooperation of various departments in providing the required information and hopes that they will continue to help in course of subsequent censuses also.

I would also place on record the contribution of all the officers and staff of the Census of Government Employees Section who are involved in the compilation of this report with the technical guidance of Smti. J.J. Umdor, Research Officer under the supervision of Shri. V.E. Iawphniaw, Deputy Director.

Any suggestion for further improvement of the report is most welcome.

Dated Shillong, the 21st May, 2015

A. Kanti
DIRECTOR
Economics & Statistics,
Meghalaya, Shillong.

CONTENTS

<i>Sl.No</i>	<i>ITEM</i>	<i>Pg. No.</i>
1.	The highlights of the report	1-2
THE MAIN FEATURES OF THE REPORT		
2.	Trend in Meghalaya Government Employees	3
3.	Trend in Meghalaya Government by sex	4
4.	The number of Permanent and Temporary Employees by Status as on 31st March 2010	5
5.	Group-wise distribution of Government Employees	6
6.	Percentage increase or decrease of Employees by Cast/Tribe	7
7.	Distribution of Scheduled Tribe Employees according to status by Main Tribes	7
8.	District-wise number of Meghalaya Government Employees as on 31st March 2003, 2006 and 2010	8
9.	Department-wise number of Permanent and Temporary Employees by Status	8-10
10.	Number of Employees according to Sex and District of Posting	11
11.	Percentage Distribution of Employees according to status and urban-rural break-up	11
TABLES		
12.	List of Tables	12
13.	Tables	13-31

THE HIGHLIGHTS OF THE REPORT

1. The total number of State Government Employees as on 31st March 2010 was 51505 as against 50210 on 31st March 2006 thereby registering an increase of 2.58% over the previous census.
2. Out of the total number of 51505 employees, female employees were 16104. Female employees registered an increase of 12.11% over the period of 4 (four) years. The census further reveals that the share of women employees to total employees was 31.27% status-wise, it was found that the female employees in Gazetted status was 7.03% in Non-Gazetted status 71.72% and in Grade IV it was 21.25%. Jaintia Hills District with 43.36% of the District total emerged as the highest number of female employees whereas East Garo Hills with 22.24% was the lowest.
3. As per the report, it was found that 40328 or 78.30% of the total number of employees were permanent and 11177 or 21.70% were temporary employees.
4. Out of 51505 employees, 46063 or 89.43% belonged to Scheduled Tribe category, 558 or 1.08% to Scheduled Caste, 961 or 1.87% to Other Backward Classes and 3923 or 7.62% belonged to Others i.e. other than the above mentioned three categories.
5. The Census reveals that out of 46063 Scheduled Tribe Category, 61.50% were of the Khasi & Jaintia Community, 34.43% were of the Garo Community and 4.07% belonged to other Scheduled Tribe category other than Khasi & Jaintia and Garo Community.
6. Of the total number of 51505 employees, 3597 or 6.98% were Gazetted, 37616 or 73.04% were Non-Gazetted and 10292 or 19.98% were Grade IV employees.
7. Out of 3597 Gazetted employees, 27.74% were in Rural areas, and out of 47908 Non-Gazetted and Grade IV employees working in rural areas were 46.22%. The overall number of employees working in Rural and Urban areas were recorded at 44.93% and 55.07% respectively.
8. Based on the projected population of the State as on 31.03.2010, the employee population ratio of the State worked out to 1:56 as against 1:53 as on 31.03.2006. Ri-Bhoi district had the lowest employee population ratio of 1:99 followed by West Khasi Hills district at 1:81, while East Khasi Hills district had the highest employee ratio of 1:38.
9. East Khasi Hills district recorded the highest number of Government employees with 21013 or 40.80% of the total number. West Garo Hills district with 8965 or 17.40% is ranked second. Next Jaintia Hills district with 7101 or 13.79%, then West Khasi Hills district with 4762 or 9.24%, East Garo Hills district with 4775 or 9.27%, Ri-Bhoi district with 2769 or 5.38% and lastly South Garo Hills district with 2120 or 4.12%.

10. The Census reveals that there are eleven major departments which constituted more than 80% of the total number of employees in the State. They are Police Department (19.81%), Education Department (18.04%), Health Department (12.67%), Public Works Department (7.86%), Agriculture Department (3.86%), Public Health Engineering Department (3.75%), Secretariat Department (3.62%), Animal & Husbandry Department (3.11%), Forest Department (2.59%), Soil & Water Conservation Department (2.39%) and Community & Rural Development Department (2.42%). The other 42 departments contributed less than 20% to the total number of employees.
11. Police Department had the highest number of employees with 10205 of the total employees followed by Education Department 9293, Small Savings Department registered the least number of employees with only 6 of the total.
12. The highest number of women employees with 8.33% of the total number of employees recorded was in the Education Department and was followed by the Health Department with 6.96%. The lowest number of women employees with 0.01% of the total number was recorded in Boiler Inspectorate Department.
13. The highest percentage of employees were of educational qualification below Matric with 35.83% of the total employees while 38.91% of employees had passed Matriculation, Pre-University or its equivalent. Degree holders in Arts, Science or Commerce stream constituted 12.49%.
 Diploma holders in Civil Engineering, Agriculture, Sericulture, Veterinary, Pharmacy and Textile were 1.83%, 2.89% were employees with Degree in Civil Engineering, Agriculture, Medical and Veterinary and also 2.63% were employees with Post-Graduate in Arts, Science, Commerce, Engineering, Agriculture, Medical and Veterinary.
14. The Census revealed that the greatest portion of Government Employees i.e. 21.27% drew pay in the scale of Rs. 9200-18020. 19.73% are those who drew the scale of pay of Rs. 6500-12700. The lowest percentage are those who drew the pay scale of Rs. 35300-48980 with a mere 0.01%.
15. Out of 51505 employees, 48094 were those employees whose dates of birth have been reported. Out of these reported figures, the employees in the age group of 43 - 47 formed the highest percentage of 18.28% while the lowest percentage of 1.04% was in the age group of 18 - 22.

THE MAIN FEATURES OF THE REPORT

1. TREND IN MEGHALAYA GOVERNMENT EMPLOYEES.

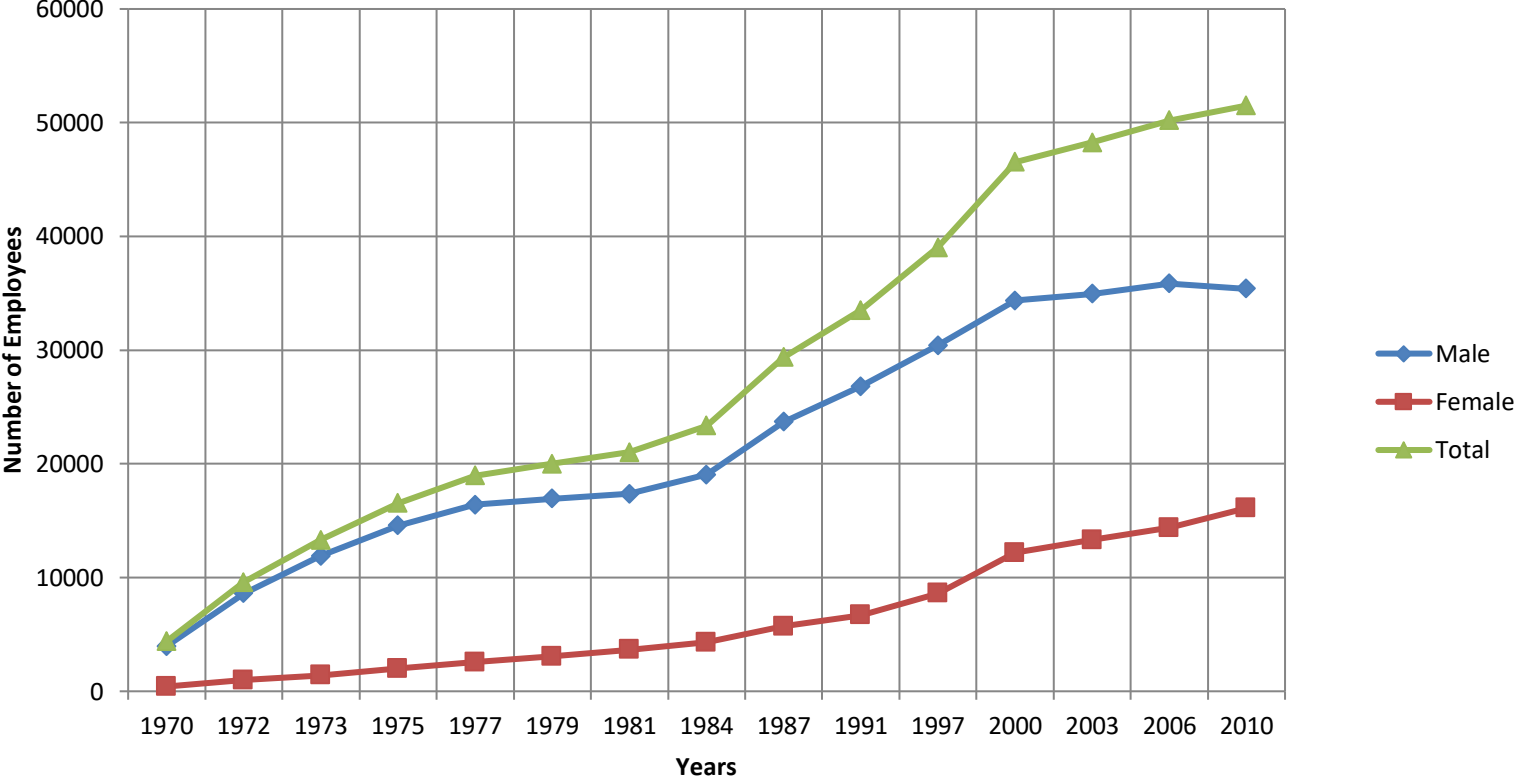
The census reveals that the total number of employees under Meghalaya Government as on 31st March 2010 was 51505 as against 50210 on 31st March 2006. The index of employment shows an increase of 30 from 1142 in 2006.

The trend and indices of Meghalaya Government employees from 1970 onwards are shown in the table below:-

**The trend and indices of employment of
Meghalaya Government Employees from 1970 onwards**

As on 31st March	Number of Employees	Growth over previous census		Index of Employment Base 1970=100
		Number	Percentage	
1	2	3	4	5
1970	4395	-	-	100
1972	9585	5190	118.09	218
1973	13306	3721	38.82	303
1975	16556	3250	24.42	377
1977	18973	2417	14.60	432
1979	20005	1032	5.44	455
1981	21026	1021	5.10	478
1984	23351	2325	11.06	531
1987	29380	6029	25.82	668
1991	33517	4137	14.08	763
1997	39023	5506	16.43	888
2000	46529	7506	19.23	1059
2003	48258	1729	3.72	1098
2006	50210	1952	4.04	1142
2010	51505	1295	2.58	1172

Trends in Meghalaya Government Employees



2. TREND IN MEGHALAYA GOVERNMENT EMPLOYEES BY SEX

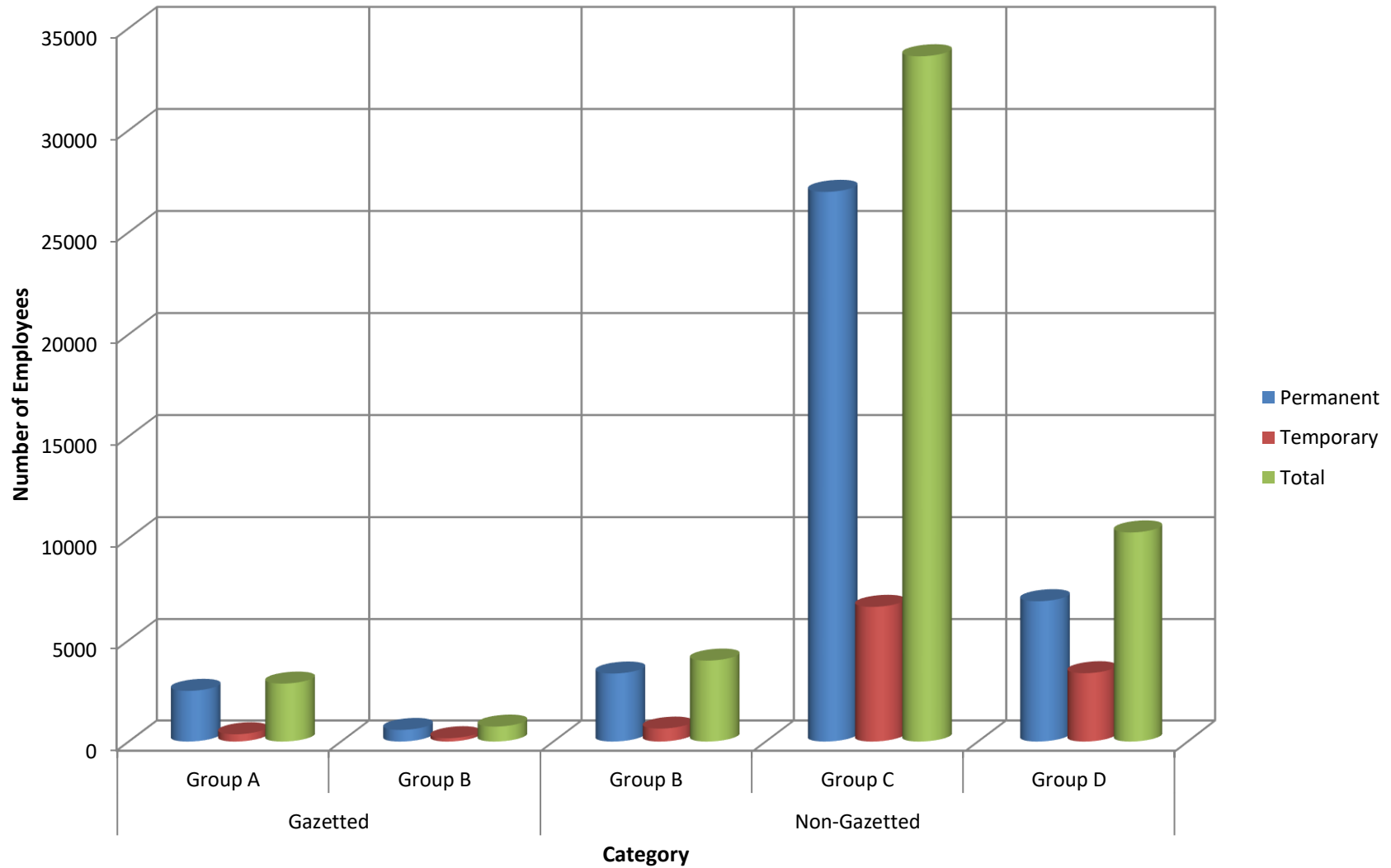
The growth rate in the number of female employment as seen from the table presented below continue to show an increasing trend and higher rate when compared with their male counterpart. In a period of four decades, female employees increased by 3734% where as male employees increased by 791% only. Further, in a span of four years i.e. from the previous census as on 31st March 2006, female employees increased by 12.11% and male employees decreased by - 1.24% .

The number of female employees per thousand male employees registered an increase of 349 over the last 40 years.

Trend in Meghalaya Government Employees by Sex

As on 31st March	Male		Female		Total	Number of Females per 1000 Male Employees
	Nos	Percentage	Nos	Percentage		
1	2	3	4	5	6	7
1970	3975	90.44	420	9.56	4395	106
1972	8604	89.77	981	10.23	9585	114
1973	11913	89.53	1393	10.47	13306	117
1975	14577	88.05	1979	11.95	16556	136
1977	16404	86.46	2569	13.54	18973	157
1979	16949	84.72	3056	15.28	20005	180
1981	17363	82.58	3663	17.42	21026	211
1984	19060	81.62	4291	18.38	23351	225
1987	23680	80.60	5700	19.40	29380	241
1991	26817	80.01	6700	19.99	33517	250
1997	30404	77.91	8619	22.09	39023	283
2000	34352	73.83	12177	26.17	46529	354
2003	34957	72.44	13301	27.56	48258	380
2006	35846	71.39	14364	28.61	50210	401
2010	35401	68.73	16104	31.27	51505	455

Number of Permanent & Temporary Employees According to Status



3. **THE NUMBER OF PERMANENT AND TEMPORARY EMPLOYEES BY STATUS AS ON 31ST MARCH, 2010**

As per the table given below, the total number of permanent employees were 40328 (78.30%) and Temporary employees were 11177 (21.70%). Out of 3597 Gazetted employees, 3074 (85.46%) were Permanent and 523 (14.54%) were Temporary employees. In the Non-Gazetted category excluding Grade IV, out of 37616 employees, Permanent employees were 30334 (80.64%) and Temporary employees were 7282 (19.36%). Out of 10292 Grade IV employees, Permanent and Temporary employees were 6920 (67.24%) and 3372 (32.76%) respectively.

The Classification of the Employees according to Status and Tenure of Service

Status		Permanent	Temporary	Total	Percentage to Total
1		2	3	4	5
Gazetted	Group A	2501	359	2860	5.55
	Group B	573	164	737	1.43
Non-Gazetted	Group B	3356	638	3994	7.76
	Group C	26978	6644	33622	65.28
	Group D	6920	3372	10292	19.98
Total		40328	11177	51505	100.00

Figures in brackets are percentage to total.

4. GROUP WISE DISTRIBUTION OF GOVERNMENT EMPLOYEES

The census reveals that the highest percentage increase was in the Non-Gazetted Group B with 70.03% and the lowest was -3.13% in Group D. 8.05% of female employees were in the Gazetted category and 91.95% were in the Non-Gazetted category including Grade IV. Further the total number of Gazetted employees was 3597 and Non-Gazetted employees including Grade IV were 47908.

The details are depicted in the following table:-

**Group-wise distribution of Government Employees
as on 31st March 2003, 2006 and 2010**

Groups	As on 31.03.2003			As on 31.03.2006			As on 31.03.2010			% age increase or decrease during 2003-2006	% age increase or decrease during 2006-2010
	Male	Female	Total	Male	Female	Total	Male	Female	Total		
1	2	3	4	5	6	7	8	9	10	11	12
Gazetted											
Group - A	1590	849	2439	1674	952	2626	1783	1077	2860	7.67	8.91
Group - B	407	98	505	442	152	594	517	220	737	17.62	24.07
Non-Gazetted											
Group - B	1505	725	2230	1473	876	2349	2467	1527	3994	5.34	70.03
Group - C	23033	9617	32650	24119	9897	34016	23161	10461	33622	4.18	(-)1.16
Group - D	8422	2012	10434	8138	2487	10625	7473	2819	10292	1.83	(-)3.13
Total	34957	13301	48258	35846	14364	50210	35401	16104	51505	4.04	2.58

5. PERCENTAGE INCREASE OR DECREASE OF EMPLOYEES BY CASTE/TRIBE

The bulk of State Government employees belonged to Scheduled Tribe category. The census reveals that 46063 or 89.43% of the total employees were Scheduled Tribe, registering an increase of 4.25% over the previous census. Scheduled Castes registered an increase of 9.41% whereas Other Backward Classes and Others were declined by 33.86% and 3.45% respectively.

Percentage Increase or Decrease of Employees by Caste/Tribe

Particulars	Number of employees				Percentage increase/decrease		
	2000	2003	2006	2010	2003 over 2000	2006 over 2003	2010 over 2006
1	2	3	4	5	6	7	8
Schedule Tribe	39528	41667	44184	46063	(+) 5.41	(+) 6.04	(+) 4.25
Schedule Caste	708	604	510	558	(-) 14.69	(-) 15.56	(+) 9.41
Other Backward Classes	1474	1285	1453	961	(-) 12.82	(+) 13.07	(-)33.86
Other	4819	4702	4063	3923	(-) 2.43	(-) 13.59	(-) 3.45

6. DISTRIBUTION OF SCHEDULED TRIBE EMPLOYEES ACCORDING TO STATUS BY MAIN TRIBES.

The Khasi & Jaintia Community comprises 28327 (61.50%) out of the 46063 Scheduled Tribe employees. The Garo Community were 15860 (34.43%) and 1876 (4.07%) belonged to other communities recognized as Scheduled Tribe by the State Government.

Distribution of Scheduled Tribe Employees according to Status by Main Tribes

Status		Khasi & Jaintia	Garo	Other tribes	Total
1		2	3	4	5
Gazetted	Group - A	1981	641	48	2670
	Group - B	515	129	13	657
Non-Gazetted	Group - B	2502	934	104	3540
	Group - C	17672	11306	1372	30350
	Group - D	5657	2850	339	8846
Grand Total		28327	15860	1876	46063

7. DISTRICT WISE NUMBER OF MEGHALAYA GOVERNMENT EMPLOYEES AS ON 31ST MARCH 2003, 2006 AND 2010.

It has been observed from the table given below that East Khasi Hills district has the highest number of Government Employees with 21013 numbers. This is because Shillong, the capital of the State is situated in East Khasi Hills and almost all the Heads of Departments are located in and around Shillong. The lowest number of Government employees with 2120 were in the South Garo Hills District.

South Garo Hills District recorded the highest increase in the number of employees with 20.52% over the previous census as compared to the other districts.

**Number of Meghalaya Government Employees
as on 31st March 2003, 2006 And 2010**

District	As on 31.03.2003				As on 31.03.2006				As on 31.03.2010				Percentage increase (+) or decrease (-) of 2006 over 2003	Percentage increase (+) or decrease (-) of 2010 over 2006
	Gazetted	Non-Gazetted	Grade IV	Total	Gazetted	Non-Gazetted	Grade IV	Total	Gazetted	Non-Gazetted	Grade IV	Total		
1	2	3	4	5	6	7	8	9	10	11	12	13	14	15
West Garo Hills	474	6901	1813	9188	478	6838	1678	8994	573	6798	1594	8965	(-) 2.11	(-) 0.32
East Garo Hills	185	2934	909	4028	176	3056	873	4105	150	3747	878	4775	(+) 1.91	(+) 16.32
South Garo Hills	79	1490	341	1910	96	1346	317	1759	122	1655	343	2120	(-) 7.91	(+) 20.52
West Khasi Hills	224	2889	942	4055	235	3870	973	5078	240	3621	901	4762	(+) 25.23	(-) 6.22
Ri-Bhoi	187	1426	613	2226	212	1725	637	2574	226	1794	749	2769	(+) 15.63	(+) 7.58
East Khasi Hills	1412	14994	4543	20949	1614	14619	4733	20966	1819	14721	4473	21013	(+) 0.08	(+) 0.22
Jaintia Hills	383	4246	1273	5902	409	4911	1414	6734	467	5280	1354	7101	(+) 14.10	(+) 5.45
All Meghalaya	2944	34880	10434	48258	3220	36365	10625	50210	3597	37616	10292	51505	(+) 4.04	(+) 2.58

8. DEPARTMENT-WISE NUMBER OF PERMANENT AND TEMPORARY EMPLOYEES BY STATUS.

As appeared from the table detailed below, out of 53 departments, Health Department has the highest number of Gazetted Permanent employees with 541 showing an increase of 9.29% over the last Census. The Non-Gazetted Permanent employees were highest in the Police Department with 8932. Grade IV Permanent employees were highest in the Health Department with 1583.

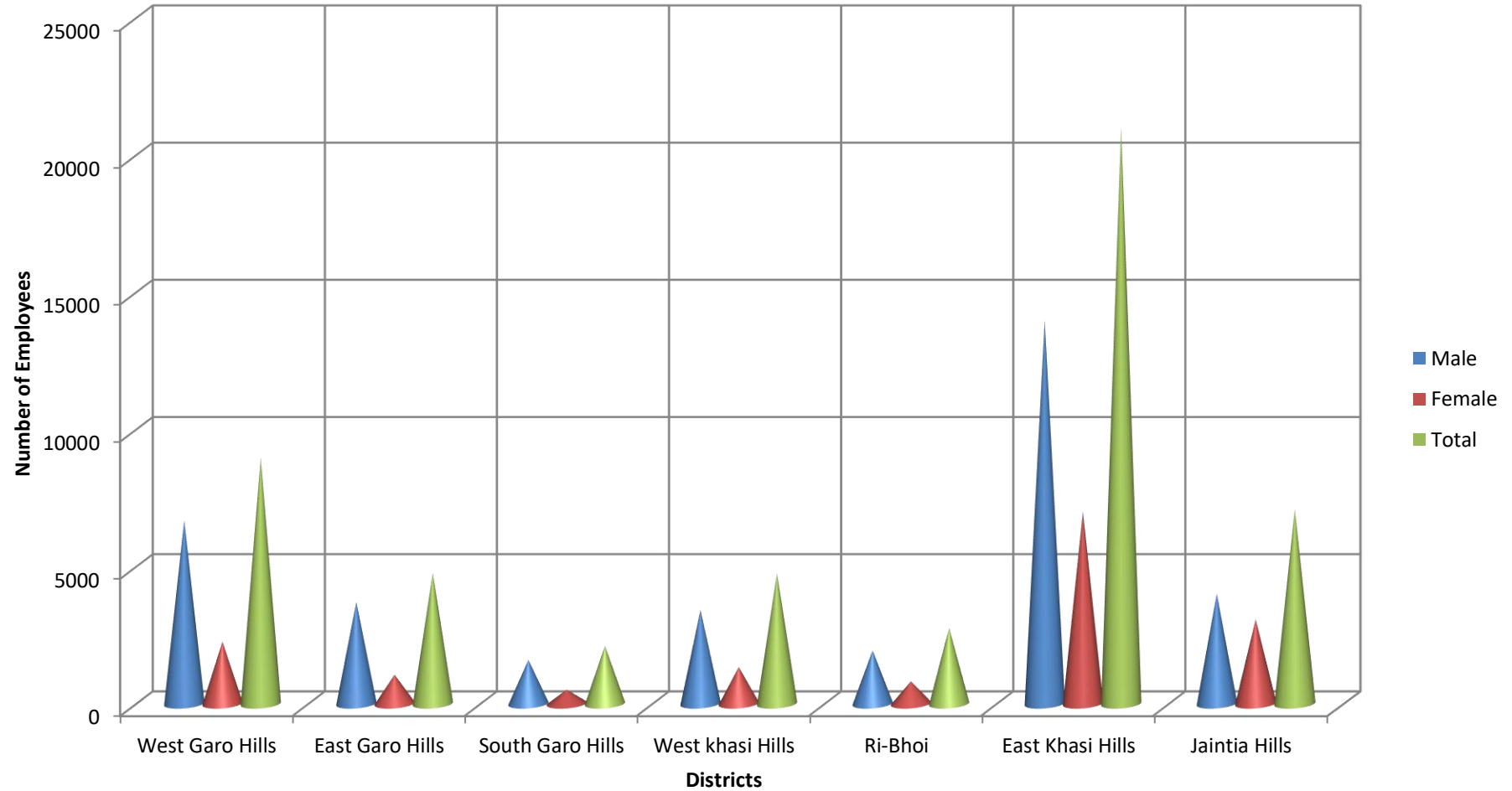
As far as Temporary employees are concerned, Public Works Department with 112 employees was highest in the Gazetted category. Education Department with 1513 was the highest in terms of Non-Gazetted employees and the Public Works Department with 621 was highest in term of Grade IV Category. Details are given in the tables on the next page:-

Department-wise number of Permanent and Temporary Employees by Status

Sl. No	Departments	Permanent			Temporary			All Employees		
		Gazetted	Non-Gazetted	Grade IV	Gazetted	Non-Gazetted	Grade IV	Gazetted	Non-Gazetted	Grade IV
1	2	3	4	5	6	7	8	9	10	11
1.	Accounts	41	243	89	4	36	18	45	279	107
2.	Agriculture	357	841	409	28	210	143	385	1051	552
3.	Animal husbandry & Veterinary	142	317	220	77	431	417	219	748	637
4.	Arts & Culture	8	48	24	3	32	37	11	80	61
5.	Assembly Secretariat	34	167	157	-	24	64	34	191	221
6.	Boiler Inspectorate	-	4	2	2	-	-	2	4	2
7.	Border Areas Development	12	32	30	2	13	5	14	45	35
8.	Civil Defence & Home Guards	16	868	116	2	9	8	18	877	124
9.	Civil Task Force	1	1	4	-	3	1	1	4	5
10.	Community & Rural Development	61	894	101	8	152	29	69	1046	130
11.	Co-operation	76	48	23	17	79	44	93	127	67
12.	Economics & Statistics	23	135	30	2	27	6	25	162	36
13.	Education including NCC	358	6612	619	37	1513	154	395	8125	773
14.	Election	1	97	39	2	53	13	3	150	52
15.	Electrical Inspectorate	1	12	10	-	7	1	1	19	11
16.	Employment	26	128	58	4	34	23	30	162	81
17.	Excise	19	151	13	6	146	12	25	297	25
18.	Fisheries	18	137	123	3	21	20	21	158	143
19.	Finance	21	1	-	-	-	-	21	1	0
20.	Forest	87	484	135	12	402	212	99	886	347
21.	Food & Civil Supplies	21	135	33	2	42	12	23	177	45
22.	GAD, DC's Office, Meghalaya Houses	14	565	501	2	35	81	16	600	582
23.	Geology & Mining	23	80	53	7	51	40	30	131	93
24.	Governor's Secretariat	3	21	49	-	4	-	3	25	49
25.	Health	541	3569	1582	8	544	282	549	4113	1864
26.	Housing	11	53	21	5	24	12	16	77	33
27.	Industries	52	198	117	22	35	10	74	233	127
28.	Information & Public Relations	15	84	31	5	41	22	20	125	53
29.	Jail	11	161	37	-	11	2	11	172	39
30.	Judicial including High Court	5	23	18	5	26	17	10	49	35
31.	Labour	10	42	24	3	13	10	13	55	34
32.	Land Records & Surveys	3	72	16	-	43	142	3	115	158
33.	Lottery	-	-	-	-	14	10	0	14	10

Sl. No	Departments	Permanent			Temporary			All Employees		
		Gazetted	Non-Gazetted	Grade IV	Gazetted	Non-Gazetted	Grade IV	Gazetted	Non-Gazetted	Grade IV
1	2	3	4	5	6	7	8	9	10	11
34.	Meghalaya Admin. Training Institute	-	7	8	-	1	-	0	8	8
35.	Planning	46	46	26	7	5	7	53	51	33
36.	Police	92	9411	461	5	228	8	97	9639	469
37.	Printing & Stationery	6	368	41	-	-	3	6	368	44
38.	Programme Implementation	1	3	1	11	10	1	12	13	2
39.	Public Health Engineering	111	638	285	36	526	338	147	1164	623
40.	Public Service Commission	3	39	13	-	-	1	3	39	14
41.	Public Works Department	265	1234	431	112	1384	621	377	2618	1052
42.	Registration	4	2	6	2	25	3	6	27	9
43.	Secretariat & Meghalaya State Law Commission	293	696	272	5	398	199	298	1094	471
44.	Sericulture & Weaving	29	521	242	-	13	26	29	534	268
45.	Small Savings	-	2	-	-	3	1	0	5	1
46.	Social Welfare	21	116	38	37	312	75	58	428	113
47.	Soil Conservation	71	736	264	-	82	76	71	818	340
48.	Sports & Youth Affairs	10	37	14	2	27	10	12	64	24
49.	Taxation	46	18	34	28	116	103	74	134	137
50.	Tourism	18	20	21	1	10	13	19	30	34
51.	Transport	11	117	33	-	35	25	11	152	58
52.	Urban Affairs	28	62	32	7	19	5	35	81	37
53.	Weights & Measures	8	38	14	2	13	10	10	51	24
	Grand Total	3074	30334	6920	523	7282	3372	3597	37616	10292

District-wise Break-up of Employees



9. NUMBER OF EMPLOYEES ACCORDING TO SEX AND DISTRICT OF POSTING.

Jaintia Hills district with 43.36% ranked first in respect of female employees as percentage to district total followed by East Khasi Hills district with 33.40% while East Garo Hills with 22.24% is the lowest rank.

Number of Employees according to Sex and District of Posting

District	Male	Female	Total	Female employees as percentage of District Total
1	2	3	4	5
West Garo Hills	6694	2271	8965	25.33
East Garo Hills	3713	1062	4775	22.24
South Garo Hills	1604	516	2120	24.34
West Khasi Hills	3421	1341	4762	28.16
Ri-Bhoi	1952	817	2769	29.50
East Khasi Hills	13995	7018	21013	33.40
Jaintia Hills	4022	3079	7101	43.36
Meghalaya	35401	16104	51505	31.27

10. PERCENTAGE DISTRIBUTION OF EMPLOYEES ACCORDING TO STATUS AND URBAN-RURAL BREAK-UP.

As per the table detailed below, the Gazetted employees working in urban areas were 2599 (72.25%) of the total 3597. The Non-Gazetted employees excluding Grade IV were 19303 (51.32%) of 37616 working in Urban Areas. Out of 10292 Grade IV employees, 6463 (62.80%) were working in urban areas.

The overall percentage of employees who were posted in Urban and Rural areas were 155.07% and 44.93% respectively.

Percentage Distribution of Employees according to status and Urban-Rural break-Up.

Status	Rural		Urban		Total	
	Number	Percentage	Number	Percentage	Number	Percentage
1	2	3	4	5	6	7
Gazetted	998	27.75	2599	72.25	3597	100
Non-Gazetted	18313	48.68	19303	31.32	37616	100
Grade IV	3829	37.20	6463	62.80	10292	100
Total	23140	44.93	28365	55.07	51505	100

TABLES

List of Tables

Sl.No	List of Tables	Pg.No.
1.	Census of Meghalaya Government Employees at a glance	13
2.	Population per State Government Employee by District	14
3.	Growth of Male and Female Employees	14
4.	Number of State Government Employees according to status and sex as on 31st March 2010	15
5.	Number of Employees by Status and District of Posting	15
6.	Department-wise Percentage Distribution of Employees by sex	16-17
7.	Department-wise distribution of Employees by Status and Sex	18-19
8.	Classification of Permanent and Temporary Employees by Sex	20
9.	District-wise Number of Employees according to Status and Tenure of Service	20
10.	Number of Female Employees by Status during 2003, 2006 and 2010	21
11.	Trend in Employment of Women by Meghalaya Government	21
12.	District-wise break-up of Employees according to Sex and Group	22
13.	Group-wise Distribution of Government Employees according to Rural-Urban	22
14.	District-wise break-up of Employees according to Rural-Urban	23
15.	Number of Employees according to Caste/Tribe	23
16.	Distribution of Employees according to Caste/Tribe by Departments	24-25
17.	Number of Employees by Caste/Tribe according to Status and Tenure of Service	25
18.	District-wise Distribution of Employees according to Caste/Tribe	26
19.	Distribution of Scheduled Tribes in Meghalaya Government Service by Departments	26-27
20.	District-wise Distribution of Scheduled Tribe Employees	28
21.	Number of Employees according to Status and Educational Qualification	28
22.	Number of Employees according to the Scales of Pay as on 31st March 2010	29
23.	Distribution of Employees according to various Pay-Ranges	30
24.	Distribution of Employees according to Status and Age-Group	31

Temporary & Permanent Distribution of Employees

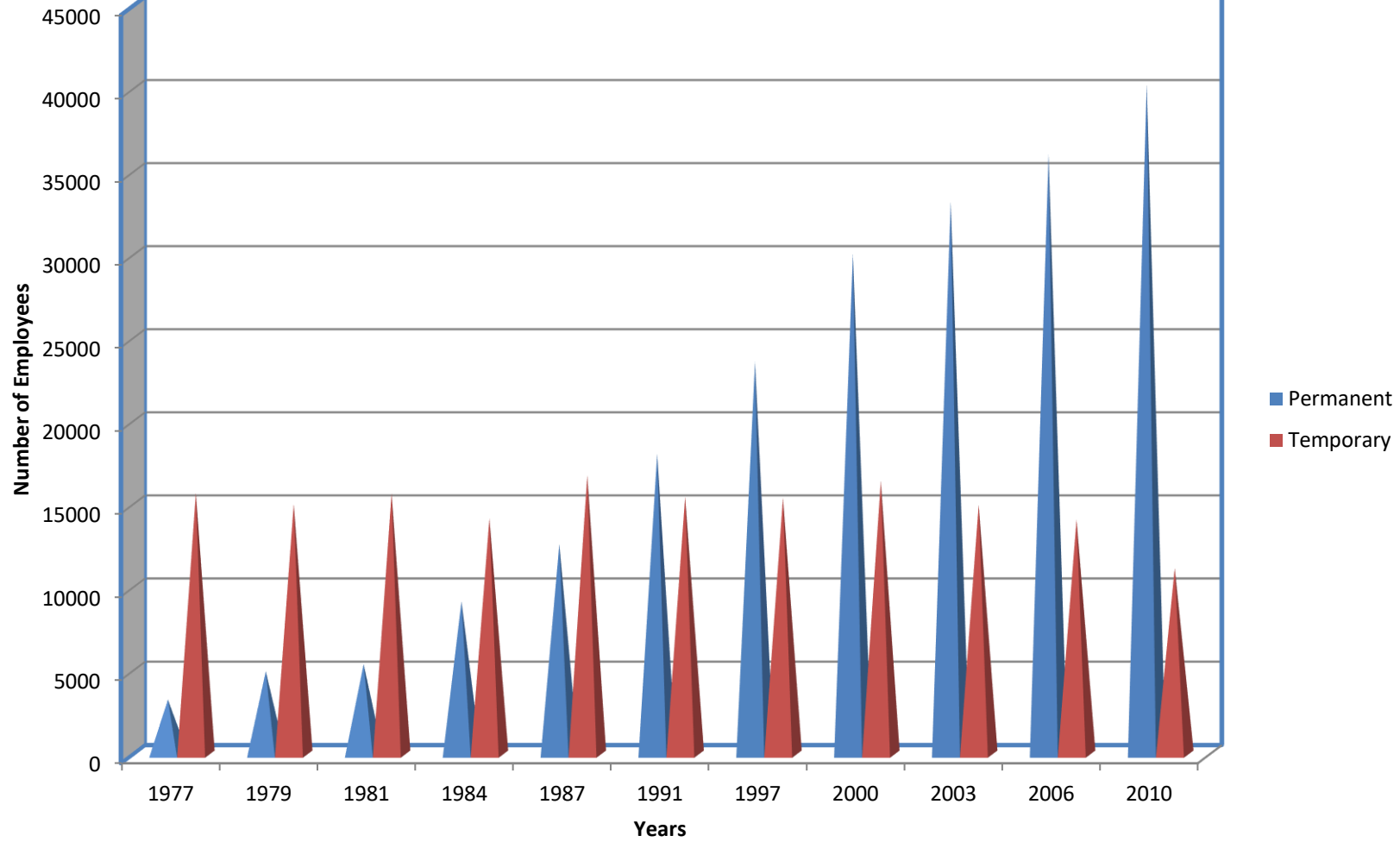


Table 1
Census of Meghalaya Government Employees at a Glance

Particulars	As on 31st March										
	1977	1979	1981	1984	1987	1991	1997	2000	2003	2006	2010
1	2	3	4	5	6	7	8	9	10	11	12
Total Employees	18973	20005	21026	23351	29380	33517	39023	46529	48258	50210	51505
(i) Gazetted	1045	1178	1293	1587	1900	2017	2493	2723	2944	3220	3597
(ii) Non-Gazetted	12775	13210	13686	15021	19314	22356	26840	33985	34880	36365	37616
(iii) Grade IV	5153	5617	6047	6743	8166	9144	9690	9821	10434	10625	10292
Permanent Employees	3274	4968	5407	9174	12617	18050	23610	30106	33265	36108	40328
(i) Gazetted	418	482	556	974	1171	1368	1806	2028	2213	2647	3074
(ii) Non-Gazetted	2415	3959	4275	6332	8862	13181	17281	22683	25271	27105	30334
(iii) Grade IV	441	527	576	1868	2584	3501	4523	5395	5781	6356	6920
Temporary Employees	15699	15037	15669	14177	16763	15467	15413	16423	14993	14102	11177
(i) Gazetted	627	696	787	613	729	649	687	695	731	573	523
(ii) Non-Gazetted	10360	9251	9411	8689	10452	9175	9559	11302	9609	9260	7282
(iii) Grade IV	4712	5090	5471	4875	5582	5643	5167	4426	4653	4269	3372
Schedule Tribe Employees	11924	13645	14737	17614	22085	26525	31663	39528	41667	44184	46063
(i) Gazetted	600	735	857	1117	1342	1563	2015	2301	2595	2930	3327
(ii) Non-Gazetted	8301	9398	9970	11590	14974	17869	22015	29153	30365	32200	33890
(iii) Grade IV	3023	3512	3910	4907	5769	7093	7633	8074	8707	9054	8846
Women Employees	2569	3056	3613	4291	5700	6700	8619	12177	13301	14364	16104
(i) Gazetted	107	125	191	276	366	467	672	800	947	1104	1297
(ii) Non-Gazetted	2144	2577	2990	3353	4466	5098	6527	9779	10342	10773	11988
(iii) Grade IV	318	354	432	662	868	1135	1420	1598	2012	2487	2819

Trends in Meghalaya Government Employees by Sex

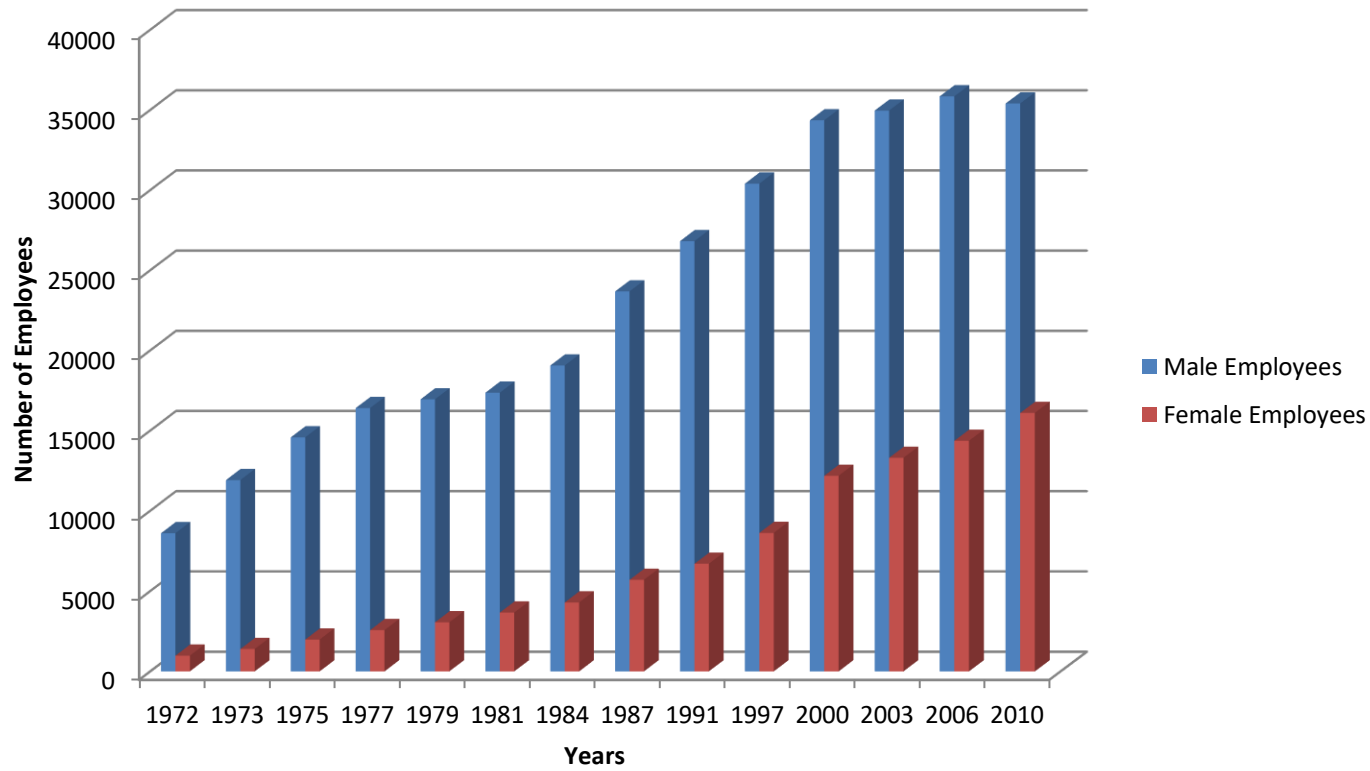


Table No. 2
Population per State Government Employee by District

Districts	Estimated Population 2010	No of Government Employees as on 31.03.2010	Population per Government Employee
1	2	3	4
West Garo Hills	619524	8965	69
East Garo Hills	299469	4775	63
South Garo Hills	120680	2120	57
West Khasi Hills	386277	4762	81
Ri-Bhoi	274400	2769	99
East Khasi Hills	789864	21013	38
Jaintia Hills	378895	7101	53
Total	2869109	51505	56

Table No. 3
Growth of Male and Female Employees

As on 31st March	Male Employees	Growth over previous census		Female Employees	Growth over previous census	
		Number	Percentage		Number	Percentage
1	2	3	4	5	6	7
1970	3975	-	-	420	-	-
1972	8604	4629	116.45	981	561	133.57
1973	11913	3309	38.46	1393	412	42.00
1975	14577	2664	22.36	1979	586	42.07
1977	16404	1827	12.53	2569	590	29.81
1979	16949	545	3.32	3056	487	18.96
1981	17363	414	2.44	3663	607	19.86
1984	19060	1697	9.77	4291	628	17.14
1987	23680	4620	24.24	5700	1409	32.84
1991	26817	3137	13.25	6700	1000	17.54
1997	30404	3587	13.38	8619	1919	28.64
2000	34352	3948	12.99	12177	3558	41.28
2003	34957	605	1.76	13301	1124	9.23
2006	35846	889	2.54	14364	1063	7.99
2010	35401	(-) 445	(-) 1.24	16104	1740	12.11

Classification of Government Employees According to Status

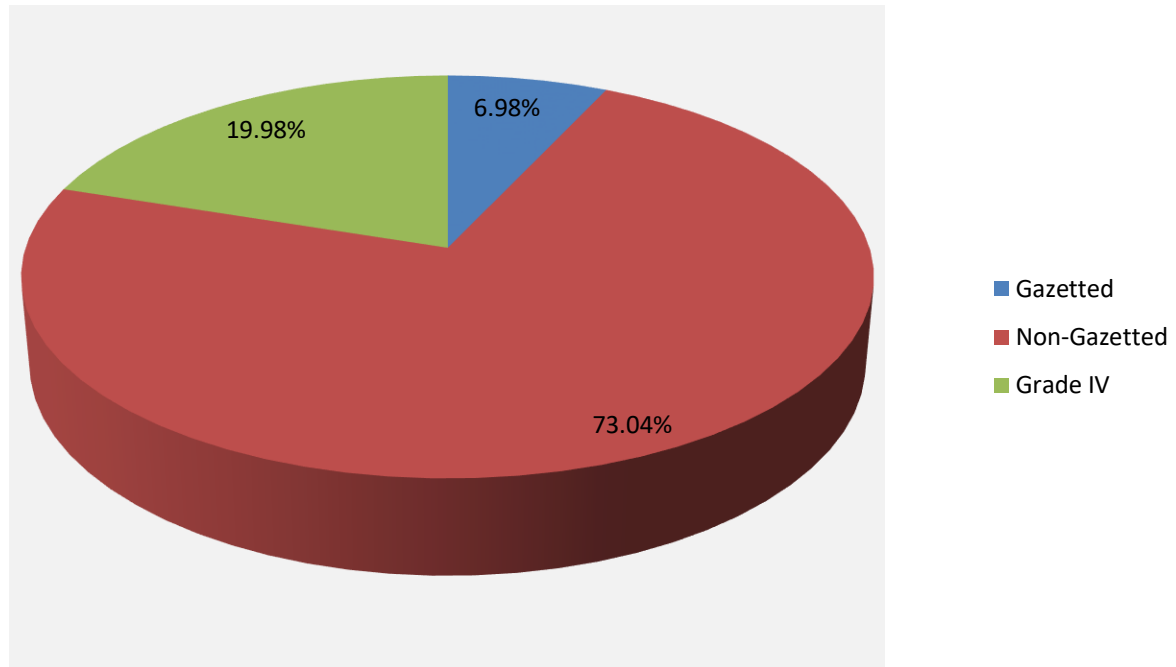


Table No. 4
Number of State Government Employees according to Status and Sex
as on 31st March 2010

Status	Male	Female	Total
1	2	3	4
Gazetted	2300 (4.46)	1297 (2.52)	3597 (6.98)
Non-Gazetted	25628 (49.76)	11988 (23.28)	37616 (73.04)
Grade IV	7473 (14.51)	2819 (5.47)	10292 (19.98)
Total	35401 (68.73)	16104 (31.27)	51505 (100.00)

Figures in brackets are percentages to all employees.

Table No. 5
Number of Employees by Status and District of Posting

Districts	Gazetted		Non-Gazetted			Total	Percent age to Total
	Group A	Group B	Group B	Group C	Group D		
1	2	3	4	5	6	7	8
West Garo Hills	467	106	566	6232	1594	8965	17.40
East Garo Hills	120	30	264	3483	878	4775	9.27
South Garo Hills	98	24	108	1547	343	2120	4.12
West Khasi Hills	183	57	347	3274	901	4762	9.24
Ri-Bhoi	174	52	183	1611	749	2769	5.38
East Khasi Hills	1477	342	2083	12638	4473	21013	40.80
Jaintia Hills	341	126	443	4837	1354	7101	13.79
All Meghalaya	2860	737	3994	33622	10292	51505	100.00

Distribution of Employees by Departments

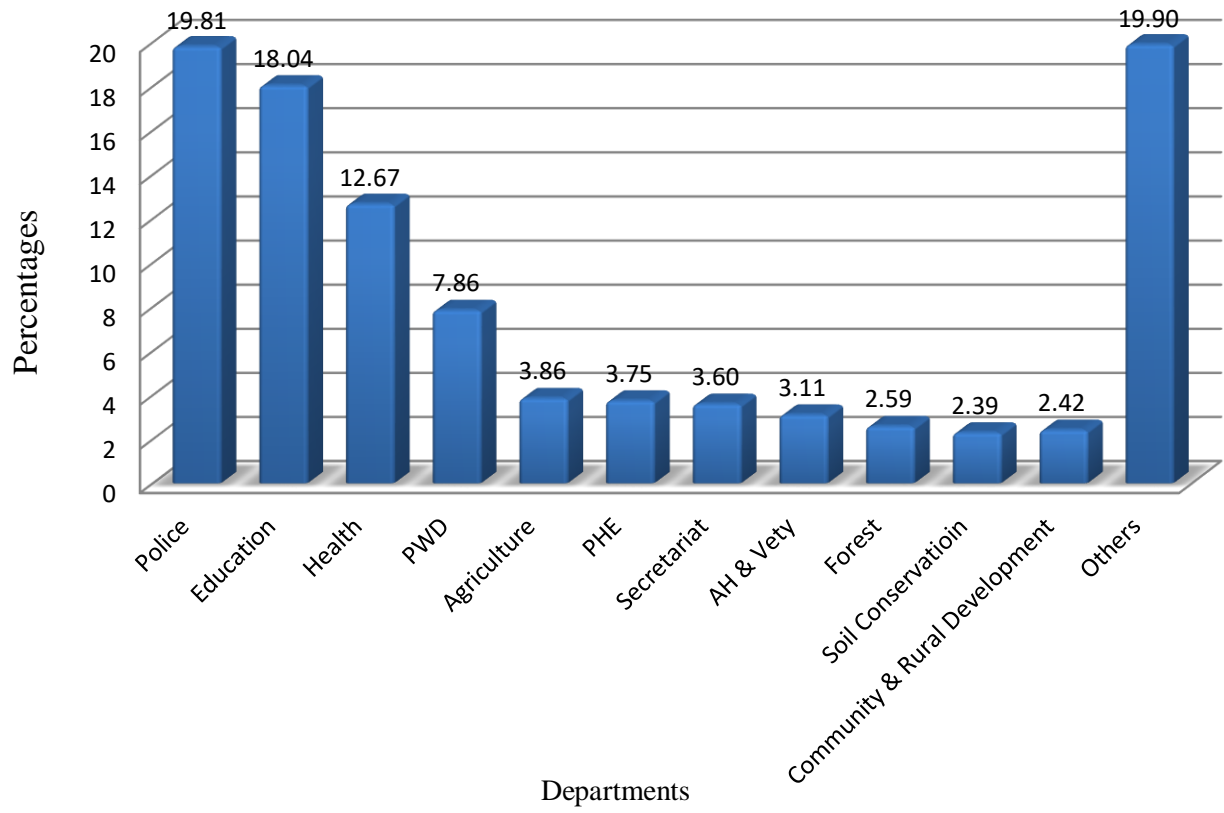


Table No. 6
Department-wise Percentage Distribution of Employees by Sex

Sl. No.	Departments	Male		Female		Total No. of Employees
		Number	Percentage	Number	Percentage	
1	2	3	4	5	6	7
1	Accounts	278	65	153	35	431
2	Agriculture	1504	76	484	24	1988
3	Animal Husbandry & Veterinary	1115	70	489	30	1604
4	Arts & Culture	82	54	70	46	152
5	Assembly Secretariat	237	53	209	47	446
6	Boiler Inspectorate	6	75	2	25	8
7	Border Areas Development	69	73	25	27	94
8	Civil Defence & Home Guards	950	93	69	7	1019
9	Civil Task Force	8	80	2	20	10
10	Community & Rural Development	953	77	292	23	1245
11	Co-Operation	172	60	115	40	287
12	Economics & Statistics	153	69	70	31	223
13	Education Including NCC	5000	54	4293	46	9293
14	Election	134	65	71	35	205
15	Electrical Inspectorate	19	61	12	39	31
16	Employment	173	63	100	37	273
17	Excise	263	76	84	24	347
18	Fisheries	249	77	73	23	322
19	Finance	11	50	11	50	22
20	Forest	1105	83	227	17	1332
21	Food & Civil Supplies	155	63	90	37	245
22	GAD, DC's Office, Meghalaya Houses	732	61	466	39	1198
23	Geology & Mining	211	83	43	17	254
24	Governor's Secretariat	61	79	16	21	77
25	Health	2939	45	3587	55	6526
26	Housing	78	62	48	38	126
27	Industries	289	67	145	33	434
28	Information & Public Relations	146	74	52	26	198
29	Jail	180	81	42	19	222

Sl. No.	Departments	Male		Female		Total No. of Employees
		Number	Percentage	Number	Percentage	
1	2	3	4	5	6	7
30	Judicial including High Court	60	64	34	36	94
31	Labour	59	58	43	42	102
32	Land Records & Survey	211	76	65	24	276
33	Lottery	13	54	11	46	24
34	Meghalaya Adm. Training Institute	12	75	4	25	16
35	Planning	83	61	54	39	137
36	Police	9760	96	445	4	10205
37	Printing & Stationery	270	65	148	35	418
38	Programme Implementation	19	70	8	30	27
39	Public Health Engineering	1445	75	489	25	1934
40	Public Service Commission	28	50	28	50	56
41	Public Works Department	2797	69	1250	31	4047
42	Registration	22	52	20	48	42
43	Secretariat & Meghalaya State Law Commission	883	47	980	53	1863
44	Sericulture & Weaving	542	65	289	35	831
45	Small Savings	2	33	4	67	6
46	Social Welfare	220	37	379	63	599
47	Soil Conservation	1009	82	220	18	1229
48	Sports & Youth Affairs	72	72	28	28	100
49	Taxation	236	68	109	32	345
50	Tourism	45	54	38	46	83
51	Transport	168	76	53	24	221
52	Urban Affairs	108	71	45	29	153
53	Weights & Measures	65	76	20	24	85
	Grand Total	35401	69	16104	31	51505

Table No. 7
Department-wise distribution of employees by Status and Sex

Sl. No.	Departments	Gazetted			Non-Gazetted			Grade IV		
		Male	Female	Total	Male	Female	Total	Male	Female	Total
1	2	3	4	5	6	7	8	9	10	11
1	Accounts	38	7	45	164	115	279	76	31	107
2	Agriculture	230	155	385	808	243	1051	466	86	552
3	Animal Husbandry & Veterinary	131	88	219	533	215	748	451	186	637
4	Arts & Culture	3	8	11	42	38	80	37	24	61
5	Assembly Secretariat	16	18	34	103	88	191	118	103	221
6	Boiler Inspectorate	2	-	2	2	2	4	2	-	2
7	Border Areas Development	13	1	14	31	14	45	25	10	35
8	Civil Defence & Home Guards	17	1	18	841	36	877	92	32	124
9	Civil Task Force	1	-	1	2	2	4	5	-	5
10	Community & Rural Development	61	8	69	790	256	1046	102	28	130
11	Co-Operation	55	38	93	69	58	127	48	19	67
12	Economics & Statistics	16	9	25	114	48	162	23	13	36
13	Education Including NCC	183	212	395	4284	3841	8125	533	240	773
14	Election	2	1	3	90	60	150	42	10	52
15	Electrical Inspectorate	1	-	1	10	9	19	8	3	11
16	Employment	20	10	30	90	72	162	63	18	81
17	Excise	22	3	25	223	74	297	18	7	25
18	Fisheries	15	6	21	109	49	158	125	18	143
19	Finance	10	11	21	1	-	1	-	-	-
20	Forest	90	9	99	738	148	886	277	70	347
21	Food & Civil Supplies	23	-	23	108	69	177	24	21	45
22	GAD, DC's Office, Meghalaya Houses	11	5	16	308	292	600	413	169	582
23	Geology & Mining	28	2	30	102	29	131	81	12	93
24	Governor's Secretariat	3	-	3	20	5	25	38	11	49
25	Health	244	305	549	1514	2599	4113	1181	683	1864
26	Housing	15	1	16	41	36	77	22	11	33
27	Industries	64	10	74	125	108	233	100	27	127

Sl. No.	Departments	Gazetted			Non-Gazetted			Grade IV		
		Male	Female	Total	Male	Female	Total	Male	Female	Total
1	2	3	4	5	6	7	8	9	10	11
28	Information & Public Relations	15	5	20	97	28	125	34	19	53
29	Jail	11	-	11	141	31	172	28	11	39
30	Judicial including High Court	5	5	10	29	20	49	26	9	35
31	Labour	7	6	13	24	31	55	28	6	34
32	Land Records & Survey	3	-	3	86	29	115	122	36	158
33	Lottery	-	-	-	6	8	14	7	3	10
34	Meghalaya Adm. Training Institute	-	-	-	7	1	8	5	3	8
35	Planning	31	22	53	29	22	51	23	10	33
36	Police	87	10	97	9233	406	9639	440	29	469
37	Printing & Stationery	6	-	6	244	124	368	20	24	44
38	Programme Implementation	9	3	12	8	5	13	2	-	2
39	Public Health Engineering	128	19	147	809	355	1164	508	115	623
40	Public Service Commission	1	2	3	18	21	39	9	5	14
41	Public Works Department	326	51	377	1700	918	2618	771	281	1052
42	Registration	3	3	6	14	13	27	5	4	9
43	Secretariat & Meghalaya State Law Commission	145	153	298	462	632	1094	276	195	471
44	Sericulture & Weaving	17	12	29	304	230	534	221	47	268
45	Small Savings	-	-	-	2	3	5	-	1	1
46	Social Welfare	10	48	58	131	297	428	79	34	113
47	Soil Conservation	58	13	71	687	131	818	264	76	340
48	Sports & Youth Affairs	12	-	12	41	23	64	19	5	24
49	Taxation	55	19	74	75	59	134	106	31	137
50	Tourism	6	13	19	15	15	30	24	10	34
51	Transport	10	1	11	114	38	152	44	14	58
52	Urban Affairs	31	4	35	53	28	81	24	13	37
53	Legal Metrology	10	-	10	37	14	51	18	6	24
	Grand Total	2300	1297	3597	25628	11988	37616	7473	2819	10292

Table No. 8
Classification of Permanent and Temporary Employees by Sex

Groups	Permanent		Temporary		Total	
	Male	Female	Male	Female	Male	Female
1	2	3	4	5	6	7
Group A	1551	950	232	127	1783	1077
Group B	2408	1521	576	226	2984	1747
Group C	19378	7600	3783	2861	23161	10461
Group D	5177	1743	2296	1076	7473	2819
Total	28514	11814	6887	4290	35401	16104

Table No. 9
District-wise Number of Employees according to Status and Tenure of Service

District	Permanent			Temporary			All Employees		
	Gazetted	Non- Gazetted	Grade IV	Gazetted	Non- Gazetted	Grade IV	Gazetted	Non- Gazetted	Grade IV
1	2	3	4	5	6	7	8	9	10
West Garo Hills	523	5916	1274	50	882	320	573	6798	1594
East Garo Hills	119	3338	692	31	409	186	150	3747	878
South Garo Hills	93	1550	276	29	105	67	122	1655	343
West Khasi Hills	181	2799	434	59	822	467	240	3621	901
Ri-Bhoi	169	1470	511	57	324	238	226	1794	749
East Khasi Hills	1638	12137	3007	181	2584	1466	1819	14721	4473
Jaintia Hills	351	3124	726	116	2156	628	467	5280	1354
All Meghalaya	3074	30334	6920	523	7282	3372	3597	37616	10292

Table No. 10
Number of Employees by Status during 2003, 2006 and 2010

Status	2003			2006			2010		
	All Employees	Female Employees	Percentage of Female employees to total employees	All Employees	Female Employees	Percentage of Female employees to total employees	All Employees	Female Employees	Percentage of Female employees to total employees
1	2	3	4	5	6	7	8	9	10
Gazetted	2944	947	32.17	3220	1104	34.29	3597	1297	36.06
Non-Gazetted	34880	10342	29.65	36365	10773	29.62	37616	11988	31.87
Grade IV	10434	2012	19.28	10625	2487	23.41	10292	2819	27.39
Total	48258	13301	27.56	50210	14364	28.61	51505	16104	31.27

Table No. 11
Trend in Employment of Women by Meghalaya Government

Departments	As on 31 st March							
	1972	1975	1981	1991	2000	2003	2006	2010
1	2	3	4	5	6	7	8	9
Community & Rural Development	61 (100)	98 (161)	106 (174)	149 (244)	225 (369)	278 (456)	292 (479)	292 (479)
Education	219 (100)	326 (149)	562 (257)	814 (372)	3904 (1783)	3787 (1729)	3850 (1758)	4293 (1960)
Health	264 (100)	549 (208)	920 (348)	1424 (539)	2379 (901)	2870 (1087)	3084 (1168)	3587 (1359)
Public Works	100 (100)	196 (196)	234 (234)	701 (701)	808 (808)	1028 (1028)	1201 (1201)	1250 (1250)
Secretariat	68 (100)	164 (241)	398 (585)	634 (932)	762 (1121)	695 (1022)	942 (1385)	976 (1435)
Other Departments	269 (100)	646 (240)	1443 (536)	2978 (1107)	4099 (1524)	4643 (1726)	4995 (1557)	5706 (2121)
Total	981 (100)	1979 (202)	3663 (373)	6700 (683)	12177 (1241)	13301 (1356)	14364 (1464)	16104 (1642)

Figures in brackets indicates index numbers with base 1972=100

Rural-Urban Distribution of Employees : By Status

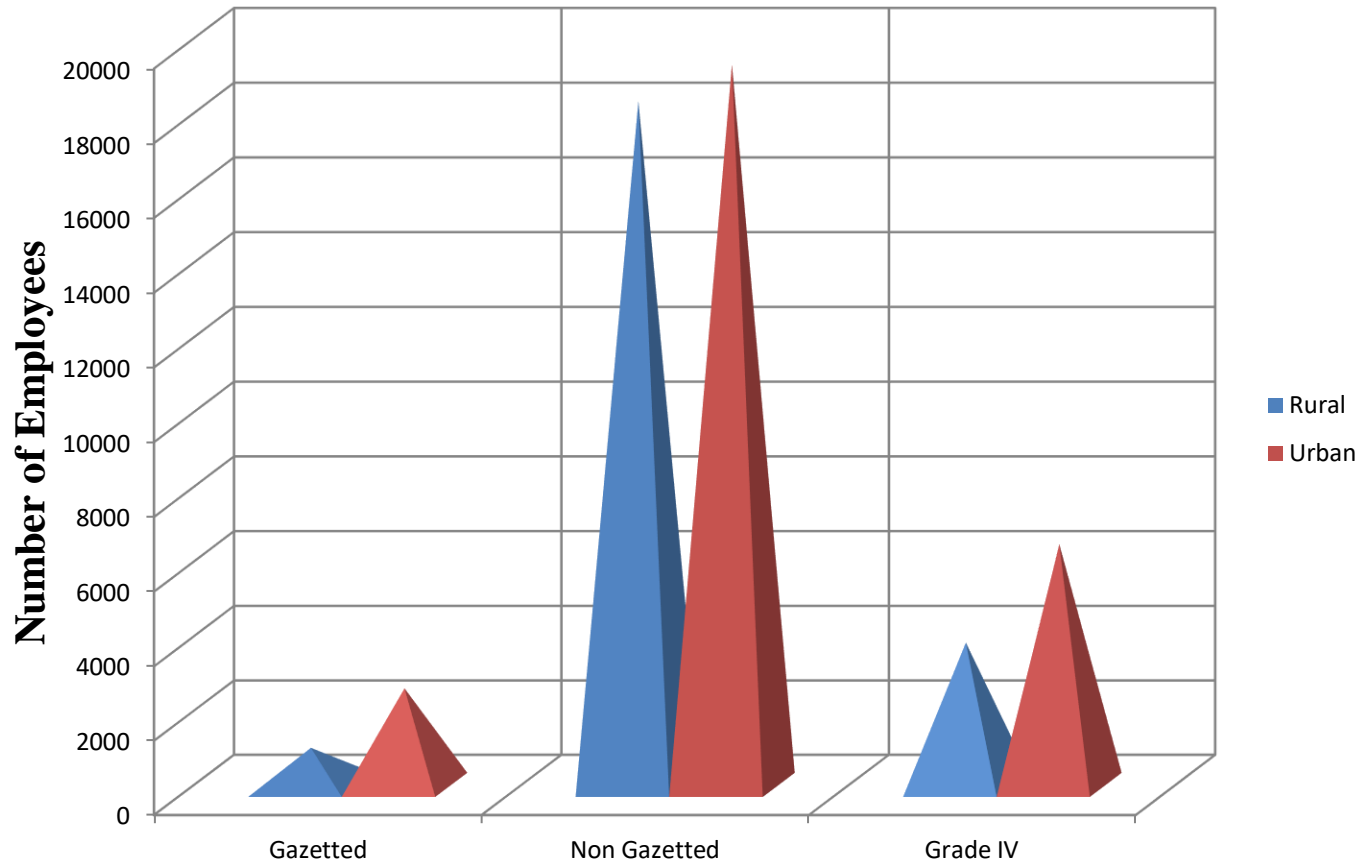


Table No. 12
District-wise break-up of employees according to Sex and Group

Districts	Gazetted				Non-Gazetted						Total	
	Group B		Group B		Group B		Group C		Group D		Male	Female
1	2	3	4	5	6	7	8	9	10	11	12	13
West Garo Hills	280	187	76	30	372	194	4627	1605	1339	255	6694	2271
East Garo Hills	91	29	26	4	206	58	2632	851	758	120	3713	1062
South Garo Hills	74	24	22	2	80	28	1129	418	299	44	1604	516
West Khasi Hills	138	45	44	13	236	111	2333	941	670	231	3421	1341
Ri-Bhoi	123	51	43	9	129	54	1073	538	584	165	1952	817
East Khasi Hills	877	600	227	115	1172	911	8690	3948	3029	1444	13995	7018
Jaintia Hills	200	141	79	47	272	171	2677	2160	794	560	4022	3079
All Meghalaya	1783	1077	517	220	2467	1527	23161	10461	7473	2819	35401	16104

Table No. 13
Group-wise Distribution of Government Employees according to Rural-Urban

Groups	Rural			Urban		
	Male	Female	Total	Male	Female	Total
1	2	3	4	5	6	7
Gazetted						
(i) Group A	504	319	823	1279	758	2037
(ii) Group B	127	48	175	390	172	562
Non-Gazetted						
(i) Group B	866	327	1193	1601	1200	2801
(ii) Group C	11783	5337	17120	11378	5124	16502
(iii) Group D	2933	896	3829	4540	1923	6463
All Employees	16213	6927	23140	19188	9177	28365

Distribution of Employees according to caste / Tribes

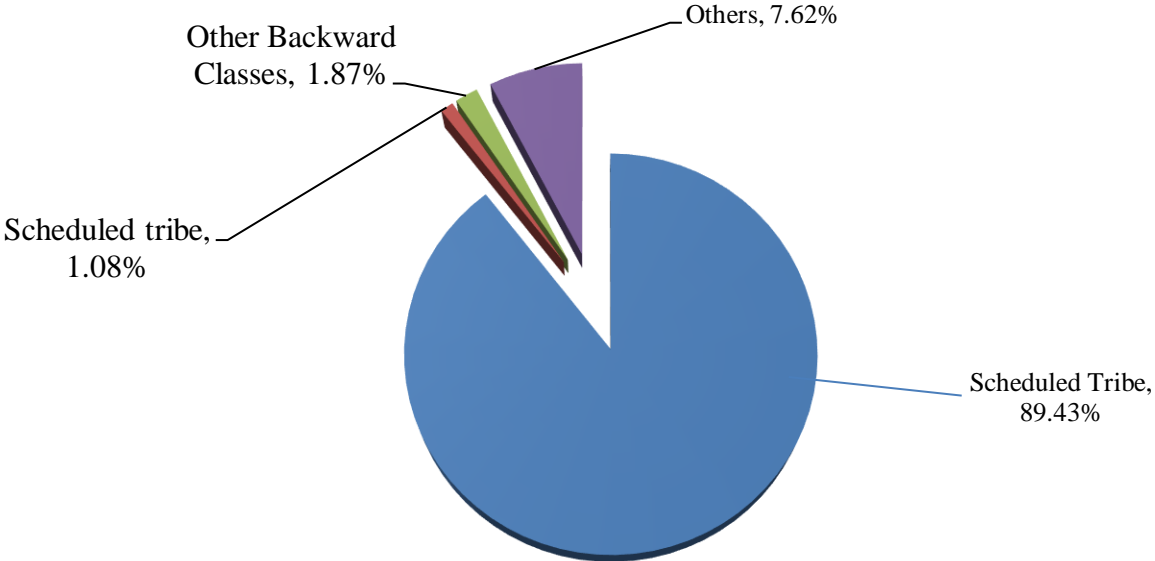


Table No. 14
District-wise break-up of Employees according to Rural-Urban

Districts	Rural				Urban			
	Gazetted	Non-Gazetted	Grade IV	Total	Gazetted	Non-Gazetted	Grade IV	Total
1	2	3	4	5	6	7	8	9
West Garo Hills	154	4158	553	4865	419	2640	1041	4100
East Garo Hills	40	2006	445	2491	110	1741	433	2284
South Garo Hills	23	1023	111	1157	99	632	232	963
West Khasi Hills	109	2184	524	2817	131	1437	377	1945
Ri-Bhoi	133	1313	494	1940	93	481	255	829
East Khasi Hills	297	4104	930	5331	1522	10617	3543	15682
Jaintia Hills	242	3525	772	4539	225	1755	582	2562
All Meghalaya	998	18313	3829	23140	2599	19303	6463	28365

Table No. 15
Number of Employees according to Caste/Tribe

Particulars	Gazetted		Non-Gazetted			All Employees
	Group A	Group B	Group B	Group C	Group D	
1	2	3	4	5	6	7
Scheduled Tribe	2670	657	3540	30350	8846	46063
Schedule Caste	17	4	14	292	231	558
Other Backward Classes	21	10	58	547	325	961
Others	152	66	382	2433	890	3923
Total	2860	737	3994	33622	10292	51505

Table No. 16
Distribution of Employees according to Caste/Tribes by Departments

Sl. No.	Departments	Schedule Tribe	Schedule Caste	Other Backward Classes	Others	Total
1	2	3	4	5	6	7
1	Accounts	390	6	5	30	431
2	Agriculture	1848	18	24	98	1988
3	Animal Husbandry & Veterinary	1466	29	38	71	1604
4	Arts & Culture	145	1	2	4	152
5	Assembly Secretariat	428	-	9	9	446
6	Boiler Inspectorate	7	-	-	1	8
7	Border Areas Development	90	1	1	2	94
8	Civil Defence & Home Guards	807	24	30	158	1019
9	Civil Task Force	6	-	3	1	10
10	Community & Rural Development	1210	5	6	24	1245
11	Co-Operation	272	-	6	9	287
12	Economics & Statistics	215	-	2	6	223
13	Education Including NCC	8711	21	43	518	9293
14	Election	200	1	1	3	205
15	Electrical Inspectorate	31	-	-	-	31
16	Employment	259	1	3	10	273
17	Excise	337	-	3	7	347
18	Fisheries	315	-	4	3	322
19	Finance	22	-	-	-	22
20	Forest	1180	27	69	56	1332
21	Food & Civil Supplies	234	-	3	8	245
22	GAD, DC's Office, Meghalaya Houses	981	41	33	143	1198
23	Geology & Mining	230	4	5	15	254
24	Governor's Secretariat	21	-	-	56	77
25	Health	6045	81	41	359	6526
26	Housing	114	-	2	10	126
27	Industries	419	2	8	5	434
28	Information & Public Relations	195	-	-	3	198
29	Jail	170	24	8	20	222
30	Judicial including High Court	79	1	1	13	94
31	Labour	102	-	-	-	102
32	Land Records & Survey	251	21	-	4	276
33	Lottery	22	-	-	2	24

Sl. NO.	Departments	Schedule Tribe	Schedule Caste	Other Backward Classes	Others	Total
1	2	3	4	5	6	7
34	Meghalaya Adm. Training Institute	15	-	1	-	16
35	Planning	131	-	2	4	137
36	Police	8246	87	397	1475	10205
37	Printing & Stationery	354	7	15	42	418
38	Programme Implementation	25	-	-	2	27
39	Public Health Engineering	1643	10	44	237	1934
40	Public Service Commission	55	-	1	-	56
41	Public Works Department	3489	130	94	334	4047
42	Registration	42	-	-	-	42
43	Secretariat & Meghalaya State Law Commission	1774	7	16	66	1863
44	Sericulture & Weaving	763	3	9	56	831
45	Small Savings	6	-	-	-	6
46	Social Welfare	592	-	3	4	599
47	Soil Conservation	1181	2	9	37	1229
48	Sports & Youth Affairs	97	1	1	1	100
49	Taxation	337	2	6	-	345
50	Tourism	74	-	3	6	83
51	Transports	212	1	5	3	221
52	Urban Affairs	141	-	5	7	153
53	Weights & Measures	84	-	-	1	85
	Grand Total	46063	558	961	3923	51505

Table No. 17

Number of Employees by Caste/Tribe according to Status and Tenure of Service

Status	Tenure of Service	Schedule Tribe	Schedule Caste	Other Backward Classes	Others	Total
1	2	3	4	5	6	7
Gazetted	Permanent	2831	21	29	193	3074
	Temporary	496	-	2	25	523
Non-Gazetted	Permanent	27077	238	541	2478	30334
	Temporary	6813	68	64	337	7282
Grade IV	Permanent	5877	150	206	687	6920
	Temporary	2969	81	119	203	3372
All Employees	Permanent	35785	409	776	3358	40328
	Temporary	10278	149	185	565	11177

Table No. 18
District-wise Distribution of Employees according to Caste/Tribe

District	Schedule tribe	Schedule Caste	Other Backward Classes	Others	Total
1	2	3	4	5	6
West Garo Hills	7534	95	172	1164	8965
East Garo Hills	4358	27	64	326	4775
South Garo Hills	1994	15	19	92	2120
West Khasi Hills	4519	18	24	201	4762
Ri-Bhoi	2502	52	42	173	2769
East Khasi Hills	18392	299	505	1817	21013
Jaintia Hills	6764	52	135	150	7101
All Meghalaya	46063	558	961	3923	51505

Table No. 19
Distribution of Schedule Tribes in Meghalaya Government Service by Departments

Sl. No.	Departments	Khasi & Jaintia	Garo	Other Tribes	Total
1	2	3	4	5	6
1	Accounts	283	96	11	390
2	Agriculture	1231	549	68	1848
3	Animal Husbandry & Veterinary	998	416	52	1466
4	Arts & Culture	109	35	1	145
5	Assembly Secretariat	325	90	13	428
6	Boiler Inspectorate	7	-	-	7
7	Border Areas Development	63	27	-	90
8	Civil Defence & Home Guards	369	349	89	807
9	Civil Task Force	5	1	-	6
10	Community & Rural Development	717	453	40	1210
11	Co-operation	194	73	5	272
12	Economics & Statistics	154	61	-	215
13	Education Including NCC	4472	3953	286	8711
14	Election	132	60	8	200
15	Electrical Inspectorate	24	7	-	31
16	Employment	179	75	5	259
17	Excise	238	89	10	337
18	Fisheries	234	71	10	315
19	Finance	21	1	-	22
20	Forest	719	425	36	1180
21	Food & Civil Supplies	162	69	3	234

Sl. No.	Departments	Khasi & Jaintia	Garo	Other Tribes	Total
1	2	3	4	5	6
22	GAD, DC's Office, Meghalaya Houses	623	313	45	981
23	Geology & Mining	157	69	4	230
24	Governor's Secretariat	20	-	1	21
25	Health	4182	1681	182	6045
26	Housing	71	41	2	114
27	Industries	264	1041	14	419
28	Information & Public Relations	141	52	2	195
29	Jail	104	57	9	170
30	Judicial including High Court	64	14	1	79
31	Labour	79	23	-	102
32	Land Records & Survey	168	82	1	251
33	Lottery	19	3	-	22
34	Meghalaya Adm. Training Institute	12	3	-	15
35	Planning	106	21	4	131
36	Police	3935	3765	456	8246
37	Printing & Stationery	235	114	5	354
38	Programme Implementation	23	2	-	25
39	Public Health Engineering	1197	368	78	1643
40	Public Service Commission	41	14	-	55
41	Public Works Department	2653	681	155	3489
42	Registration	42	-	-	42
43	Secretariat & Meghalaya State Law Commission	1397	361	16	1774
44	Sericulture & Weaving	381	259	123	763
45	Small Savings	5	1	-	6
46	Social Welfare	360	222	10	592
47	Soil Conservation	714	447	20	1181
48	Sports & Youth Affairs	69	27	1	97
49	Taxation	263	65	9	337
50	Tourism	48	24	2	74
51	Transports	160	47	5	212
52	Urban Affairs	96	42	3	141
53	Weights & Measures	62	21	1	84
	Grand Total	28327	15860	1876	46063

Table No. 20
District-wise Distribution of Schedule tribe Employees

Districts	Khasi & Jaintia	Garo	Other Tribes	Total
1	2	3	4	5
West Garo Hills	407	6299	828	7534
East Garo Hills	392	3703	263	4358
South Garo Hills	71	1835	88	1994
West Khasi Hills	3790	649	80	4519
Ri-Bhoi	2248	193	61	2502
East Khasi Hills	15255	2700	437	18392
Jaintia Hills	6164	481	119	6764
All Meghalaya	28327	15860	1876	46063

Table No. 21
Number of Employees according to Status and Educational Qualification

Educational Qualification	Gazetted		Non-Gazetted			Total
	Group A	Group B	Group B	Group C	Group D	
1	2	3	4	5	6	7
Below HSLC/Matric	8	1	265	10156	8023	18453
HSLC/Matric/SSLC	15	28	498	11364	917	12822
HSSLC/PU/Intermediate/XII	66	63	615	6114	361	7219
Degree in Arts/Sc/Commerce	492	354	1436	3970	182	6434
Diploma in Civil Engineering	109	128	469	100	-	806
Diploma in Agri/Seri/Vety/ Pharmacy/Textile, etc.	13	2	21	101	2	139
Degree in Civil Engineering	463	24	28	9	-	524
Degree in Agriculture	305	3	-	3	-	311
Degree in Medical	464	2	1	1	-	468
Degree in Veterinary	186	-	-	-	-	186
PG in Arts/Sc/Commerce	479	103	446	241	2	1271
PG in Engineering	11	3	-	2	-	16
PG in Agriculture	30	-	2	1	-	33
PG in Medical	14	-	-	-	-	14
PG in Veterinary	19	-	-	-	-	19
D. Phil / D. Litt/ Ph. D	42	1	1	-	-	44
Other Qualification	48	8	50	64	1	171
Qualification not Stated	96	17	162	1496	804	2575
Total	2860	737	3994	33622	10292	51505

Table No. 22
Number of Employees according to the scales of pay as on 31st March 2010

Scale of Pay	M	F	Total
1	2	3	4
6500-160-7620-EB-210-9510-290-12700	7381	2781	10162
7100-180-8360-EB-230-10430-310-13840	1546	307	1853
7700-190-9030-EB-250-11280-340-15020	5619	78	5697
8300-210-9770- EB-270-12200-370-16270	7442	1778	9220
9200-230-10810- EB-300-13510-410-18020	5887	5066	10953
9900-250-11650- EB-320-14530-440-19370	1031	725	1756
10600-270-12490- EB-340-15550-470-20720	426	322	748
11300-280-13260- EB-360-16500-500-22000	871	1640	2511
12000-300-14100- EB-390-17610-530-23440	95	59	154
13100-330-15410- EB-420-19190-580-25570	273	486	759
14100-350-16550- EB-460-20690-620-27510	2335	1247	3582
14700-370-17290- EB-480-21610-650-28760	384	231	615
15700-390-18430- EB-510-23020-690-30610	113	191	304
16300-410-19170- EB-530-23940-720-31860	125	45	170
17000-470-20290- EB-560-25330-760-33690	872	530	1402
18300-500-21800- EB-650-27000-810-35100	175	209	384
20700-620-24420-730-29530-890-36650	175	111	286
23300-700-27500-830-32480-970-39270	260	127	387
26700-800-33100-1000-42100	117	31	148
28700-860-35580-1050-43980	16	4	20
31300-940-37880-1110-46760	39	13	52
35300-1060-41660-1220-48980	1	1	2
Consolidated pay/other pay scales not identical with the pay scales of the Government of Meghalaya, Fixed Pay	194	108	302
No. of Government Employees Where Pay was not stated	24	14	38
Total	35401	16104	51505

Table No. 23
Distribution of Employees according to various Pay-Ranges

Pay Ranges (in Rs.)	2010	
	No. of Employees	% of Total
1	2	3
6500-160-7620-EB-210-9510-290-12700	10162	19.73
7100-180-8360-EB-230-10430-310-13840	1853	3.6
7700-190-9030-EB-250-11280-340-15020	5697	11.06
8300-210-9770- EB-270-12200-370-16270	9220	17.9
9200-230-10810- EB-300-13510-410-18020	10953	21.26
9900-250-11650- EB-320-14530-440-19370	1756	3.41
10600-270-12490- EB-340-15550-470-20720	748	1.45
11300-280-13260- EB-360-16500-500-22000	2511	4.88
12000-300-14100- EB-390-17610-530-23440	154	0.3
13100-330-15410- EB-420-19190-580-25570	759	1.47
14100-350-16550- EB-460-20690-620-27510	3582	6.95
14700-370-17290- EB-480-21610-650-28760	615	1.19
15700-390-18430- EB-510-23020-690-30610	304	0.59
16300-410-19170- EB-530-23940-720-31860	170	0.33
17000-470-20290- EB-560-25330-760-33690	1402	2.72
18300-500-21800- EB-650-27000-810-35100	384	0.75
20700-620-24420-730-29530-890-36650	286	0.56
23300-700-27500-830-32480-970-39270	387	0.75
26700-800-33100-1000-42100	148	0.29
28700-860-35580-1050-43980	20	0.04
31300-940-37880-1110-46760	52	0.1
35300-1060-41660-1220-48980	2	0.01
Consolidated pay/fixed pay/other pay scales not identical with the pay scales of the Government of Meghalaya	302	0.59
No. of Government Employees Where Pay was not stated	38	0.07
Total	51505	100

Table No. 24
Distribution of employees according to Status and Age-Group

Status	18-22	23-27	28-32	33-37	38-42	43-47	48-52	53 and above	Date of Birth not Stated
1	2	3	4	5	6	7	8	9	10
Gazetted	1	57	306	436	573	634	666	686	238
Non-Gazetted	374	3041	4796	5785	6213	6391	4710	3684	2622
Grade IV	125	634	1147	1357	1706	1766	1606	1400	551
Total	500	3732	6249	7578	8492	8791	6982	5770	3411