

**REPORT**

*On*

**CENSUS**

*Of*

**MEGHALAYA STATE GOVERNMENT EMPLOYEES**

**AS ON 31st MARCH, 2000.**



**GOVERNMENT OF MEGHALAYA  
DIRECTORATE OF ECONOMICS & STATISTICS  
SHILLONG**

**REPORT  
ON  
CENSUS  
OF  
MEGHALAYA STATE GOVERNMENT EMPLOYEES  
AS ON 31ST MARCH, 2000**



**GOVERNMENT OF MEGHALAYA  
DIRECTORATE OF ECONOMICS & STATISTICS  
SHILLONG**

## Preface

The census of Meghalaya State Government Employees was first conducted in the year 1972 with 31<sup>st</sup> March as the reference date. The present census as on 31.03.2000 is the eleventh in the series and for the first time, all the offices have been covered in this census which include the primary school teachers. Employees and workers under the Local and Autonomous Bodies and Public Sector Undertakings are outside the scope of this census as the returns received are not complete.

The main object of the census is to provide a count of the total number of State Government employees classified by status, class of service namely, groups of posts under gazetted and non-gazetted, tenure of service, sex structure, pay-scales, caste/tribe, place of posting, educational level, etc. Details are presented in the tables as placed accordingly.

The Directorate of Economics & Statistics places on record its appreciation of the active co-operation received from all the Departments/Offices of the State Government in submitting the returns of the census and sincerely hopes that it will continue to receive co-operation in course of subsequent censuses also.

Comments and suggestions for improvement of this publication are most welcome.

*W. L. Lyngdoh* I.A.S.  
Director  
Directorate of Economics & Statistics  
Meghalaya : Shillong

Dated Shillong,  
the 25<sup>th</sup> March, 2002.

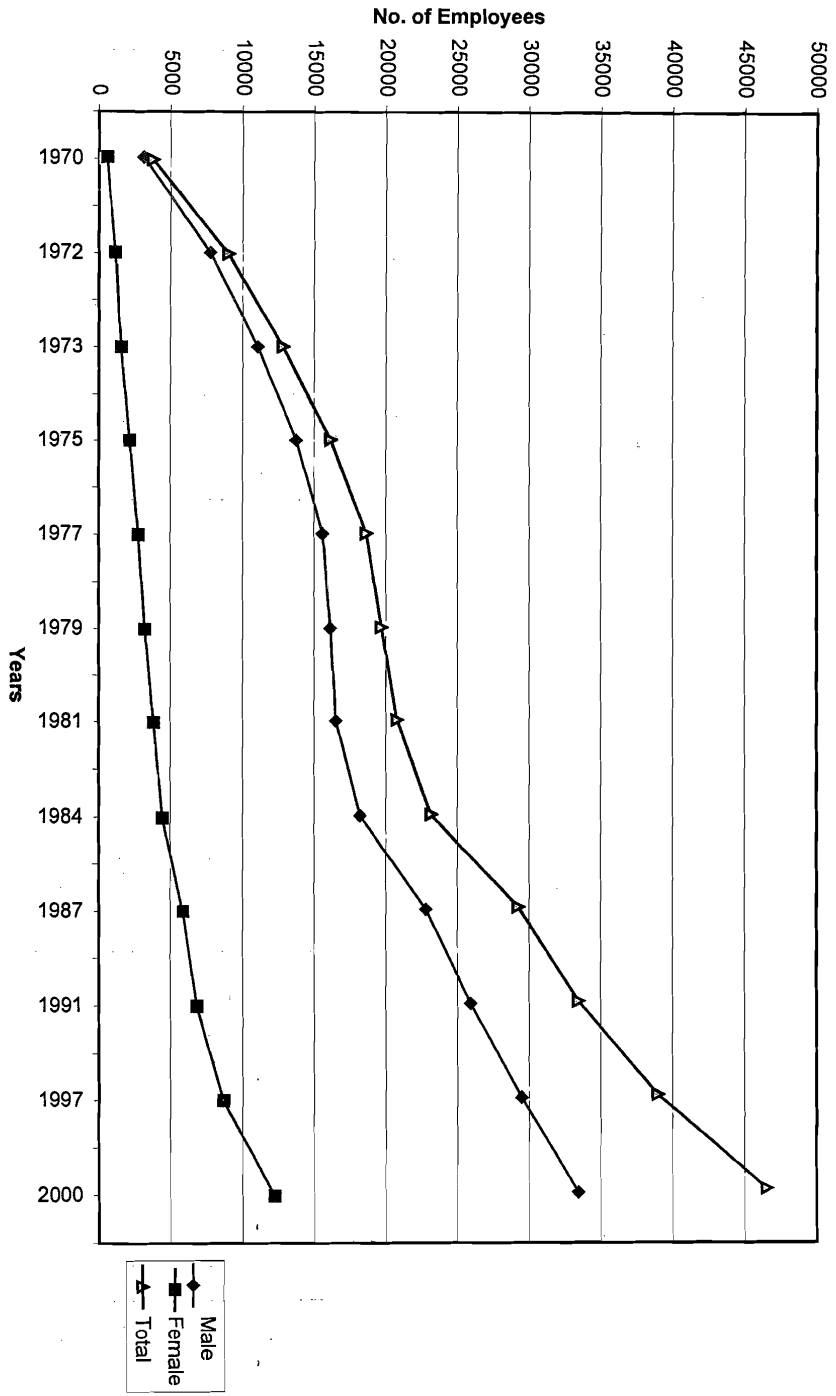
## CONTENTS

	<i>Page No.</i>
Highlights of the Report	1
Report - Main Features	2 - 7
 <i>TABLE NO.</i>	
1. Census of Meghalaya Government Employees at a Glance	8
2. Population Per State Government Employee by District	9
3. Growth of Male and Female Employees	9
4. Number of State Government Employees according to Status and Sex as on 31 <sup>st</sup> March, 2000.	10
5. Number of Employees by Status and District of Posting	10
6. Department-wise Percentage distribution of Employees by Sex	11
7. Department-wise distribution of Employees by Status and by Sex	12
8. Classification of Permanent and Temporary Employees by Sex	13
9. District-wise number of Employees according to Status and Tenure of Service	13
10. Number of Female Employees by Status during 1991, 1997 and 2000	14
11. Trend in Employment of Women by Meghalaya Government	14
12. District-wise break-up of Employees according to Sex and Group	15
13. Group-wise distribution of Government Employees according to Place of Posting	15
14. District-wise break-up of Employees according to Place of Posting	16
15. Number of Employees according to Caste/Tribe	16
16. Distribution of Employees according to Caste/Tribe by Departments	17
17. Number of Employees by Caste/Tribe according to Status and Tenure of Service	18
18. District-wise distribution of Employees according to Caste/Tribe	18
19. Distribution of Scheduled Tribes in Meghalaya Government Service by Departments	19
20. District-wise distribution of Scheduled Tribe Employees	20
21. Number of Employees according to Status and Educational Qualification	20
22. Number of Employees according to the Scale of Pay as on the 31 <sup>st</sup> March, 2000	21
Statistics on Number of Meghalaya State Government Employees retiring from Service at the age of 58 years, during the 20 years period (2000-2019)	22

## HIGHLIGHTS OF THE REPORT

- The total number of Meghalaya Government Employees as on 31<sup>st</sup> March, 2000 including Government Primary School Teachers was 46,529 as against 39,023 on 31<sup>st</sup> March 1997, thereby registering an increase of 19.23% over the period of 3 years. This high percentage of increase was due to the fact that in 1997 or the previous census, only a negligible number of Primary School Teachers were reported.
- The strength of the government employees had come to this level of 46,529 from a beginning of 4395 on 2<sup>nd</sup> April 1970, the inaugural day of the Meghalaya Autonomous State and 9585 in 1972, the year when Meghalaya attained full statehood. The index of growth of Meghalaya Government employees on base 1970 = 100, thus worked out to 1059 in March 2000 and the increase during the period (1970-2000) was 958.68 per cent.
- **The employee-population ratio of the State on 31.03.2000 worked out to 1:49 as against 1:55 on 31.03.1997 based on the projected population of the State on the respective dates. Ri-Bhoi District had the lowest employee-population ratio of 1:74.**
- Of the total number of 46,529 employees, 2723 or 5.85% were Gazetted, 33,985 or 73.04% were Non-Gazetted and 9821 or 21.11% were Grade IV.
- **30,106 (64.70%) of the employees were permanent and the rest 16,423 (35.30%) were temporary. It may also be mentioned that the number of permanent employees were only 32.03% in 1972 which went up to 53.85% in 1991 and 60.50% in 1997.**
- Women employment registered a record of 26.17% (12,177 Nos.) of the total number of employees. The highest number of women employees was in the Education Department followed by Health Department. These two departments together employed more than half of the female workers of the State Government. **Women employment also indicated a very high increase from 981 in 1972 to 12,177 in 2000.**
- The number of employees in the urban areas constituted 55.15% of the total leaving 44.85% to those serving in rural areas.
- The Education Department recorded the highest number of employees with 9,207 or 19.79% of the total employees, followed by Police Department with 7,781 or 16.72% and Health Department with 5,099 or 10.96%. At the other extreme was the Directorate of Small Savings with only 6 employees.
- 84.95 per cent or 39,528 of the total employees of the State belonged to Scheduled Tribe category, 708 or 1.52% to Scheduled Caste, 1,474 or 3.17% to Other Backward Classes and the rest 4,819 or 10.36% belonged to Others, other than the above three categories.
- The census revealed that **according to academic attainments, the bulk of the employees, that is 45.97% were below matric. Another 34.58% had passed Matric, Higher Secondary, P.U. and Intermediate Standard. 10.52% of the employees had Degrees and/or Post Graduate Degrees and Ph.D. in Arts, Science and Commerce, 2.40 per cent were technically qualified including the Diploma holders in Engineering, etc. and 2.71 per cent with Degrees and/or Post Graduate Degrees in Medical, Agriculture, Veterinary, Engineering, etc.**
- Out of the 46,529 employees, 10,097 or 21.70% drew pay in the scale of Rs.3100-5060 and its extended scale of Rs.3900-5325, 9,524 (20.47%) in the scale of Rs.2440-3680, whose extended scale is Rs.2900-3875. There were 59 Group-A employees whose scales of pay were either Central Pay Scales or Consolidated pay and hence not identical with the scales of pay of the Government of Meghalaya.

### TRENDS IN MEGHALAYA GOVERNMENT EMPLOYEES



# REPORT - MAIN FEATURES

## 1. TREND IN MEGHALAYA GOVERNMENT EMPLOYEES

The number of Meghalaya Government Employees including teachers of all stages totalled 46,529 as on 31<sup>st</sup> March, 2000 as against 39,023 (negligible number of primary teachers accounted) on 31<sup>st</sup> March, 1997.

The table below shows the trend and indices of employment of Meghalaya Government Employees from 1970 onwards.

As on 31 <sup>st</sup> March	Number of Employees	Growth over previous Census		Index of Employment Base 1970 = 100
		Number	Percentage	
(1)	(2)	(3)	(4)	(5)
1970	4395	-	-	100
1972	9,585	5,190	118.09	218
1973	13,306	3,721	38.82	303
1975	16,556	3,250	24.42	377
1977	18,973	2,417	14.60	432
1979	20,005	1,032	5.44	455
1981	21,026	1,021	5.10	478
1984	23,351	2,325	11.06	531
1987	29,380	6,029	25.82	668
1991	33,517	4,137	14.08	763
1997	39,023 (38,850)	5,506	16.43	888
2000	46,529 (39,613)	7506 (763)	19.23 (1.96)	1059

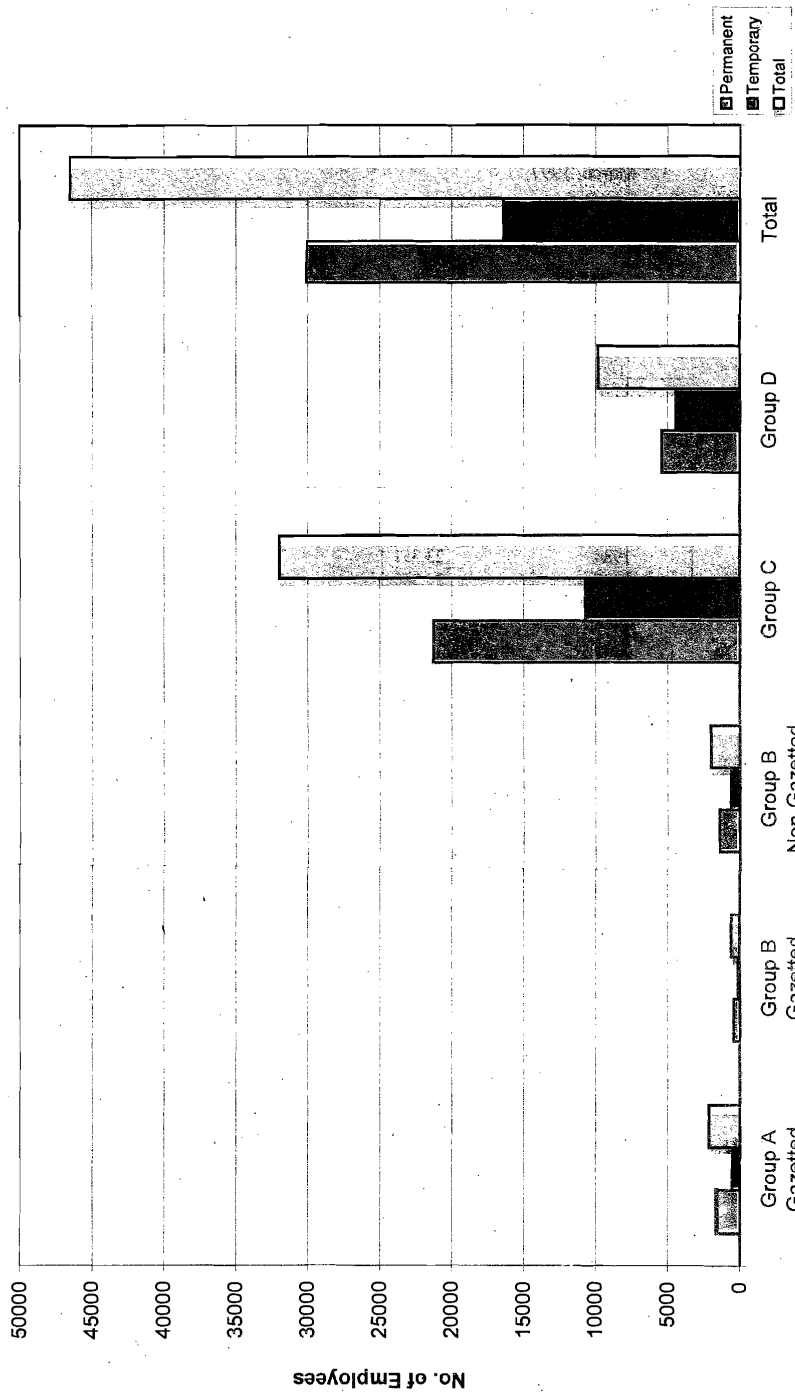
*NB : Figures in brackets exclude primary teachers.*

## 2. TREND IN MEGHALAYA GOVERNMENT EMPLOYEES BY SEX

It is observed from the table below that the share of women employees had been constantly rising from year to year. In the year 1970, the number of women employed was only 420 (9.56%) and increased to 12177 (26.17%) in 2000. The number of female employees increased at a faster rate of 2799% compared to male employment which increased at 764% in a period of 3 decades. It is also encouraging that the number of females per thousand male employees registered an increase from 250 in 1991 to 283 in 1997 and 354 in 2000.

As on 31 <sup>st</sup> March	Male		Female		Total	Number of Females per 1000 Male Employees
	Number	Percentage	Number	Percentage		
(1)	(2)	(3)	(4)	(5)	(6)	(7)
1970	3,975	90.44	420	9.56	4,395	106
1972	8,604	89.77	981	10.23	9,585	114
1973	11,913	89.53	1,393	10.47	13,306	117
1975	14,577	88.05	1,979	11.95	16,556	136
1977	16,404	86.46	2,569	13.54	18,973	157
1979	16,949	84.72	3,056	15.28	20,005	180
1981	17,363	82.58	3,663	17.42	21,026	211
1984	19,060	81.62	4,291	18.38	23,351	225
1987	23,680	80.60	5,700	19.40	29,380	241
1991	26,817	80.01	6,700	19.99	33,517	250
1997	30,404	77.91	8,619	22.09	39,023	283
2000	34,352	73.83	12,177	26.17	46,529	354

**NUMBER OF PERMANENT AND TEMPORARY EMPLOYEES ACCORDING TO STATUS AS ON  
31ST MARCH 2000**





**3. NUMBER OF PERMANENT AND TEMPORARY GOVERNMENT EMPLOYEES ACCORDING TO STATUS AS ON 31<sup>ST</sup> MARCH, 2000.**

Out of the total number of Meghalaya Government Employees, the Group-A Gazetted employees were 4.57%, the Group-B Gazetted were 1.28% while the Non-Gazetted Group-B and Group-C together constituted 73.04% and 21.11% were Group-D employees.

The number of employees holding permanent post at one time or other constituted the bulk of the government employees accounting for 64.70 per cent leaving a percentage of 35.30% to the temporary employees.

The classification of the employees according to status and tenure of service is given below.

Status		Permanent	Temporary	Total	Percentage to total
(1)		(2)	(3)	(4)	(5)
Gazetted	Group A	1599	529	2128	4.57
	Group B	429	166	595	1.28
Non-Gazetted	Group B	1397	601	1998	4.29
	Group C	21286	10701	31987	68.75
	Group D	5395	4426	9821	21.11
Total		30106 (64.70)	16423 (35.30)	46529	100.00

*Figures in brackets are percentages to total*

**4. GROUP-WISE DISTRIBUTION OF GOVERNMENT EMPLOYEES**

The census reveals that the employees of Group-A increased from 1978 in 1997 to 2128 in 2000 at a percentage of 7.58 as seen from the table below. Under the Group-B class of State Government employees, there were two categories of such employees which were placed as Gazetted and Non-Gazetted. Against the Gazetted class, the percentage of increase was 15.53 and the highest increase was in the Non-Gazetted Group-B employees with 40.11%. There was a marginal increase of only 1.35% in Group-D category.

The number of women employees under Gazetted category rose to 800 in 2000 from 672 in 1997 showing an increase of 19.05% whereas in the grade of Non-Gazetted, the increase was 49.82% and 12.53% in respect of Group-D category. The number of Group-D women employees was 1598 in 2000 which was 16.27% of the total number of Group-D employees.

Groups	As on 31.03.1997			As on 31.03.2000			Percentage increase during 1997-2000
	Male	Female	Total	Male	Female	Total	
(1)	(2)	(3)	(4)	(5)	(6)	(7)	(8)
<b>Gazetted</b>							
Group A	1422	556	1978	1449	679	2128	7.58
Group B	399	116	515	474	121	595	15.53
<b>Non-Gazetted</b>							
Group B	1163	263	1426	1424	574	1998	40.11
Group C	19150	6264	25414	22782	9205	31987	25.86
Group D	8270	1420	9690	8223	1598	9821	1.35
Total	30304	8619	39023	34352	12177	46529	19.23

**5. PERCENTAGE INCREASE OR DECREASE OF EMPLOYEES BY CASTE/TRIBE**

The number of Scheduled Tribe Employees in the State was 31663 in 1997 and 39528 in 2000 and as seen from the table below, the increase in respect of these employees were 19.37% in 1997 and 24.84% in 2000. The table also reveals the declining trend in "Others" category of employees with 6.88% in 1997 and 1.87% in 2000.

Particulars	Number of employees			Percentage increase/decrease	
	1991	1997	2000	1997 over 1991	2000 over 1997
(1)	(2)	(3)	(4)	(5)	(6)
Scheduled Tribe	26525	31663	39528	(+) 19.37	(+) 24.84
Scheduled Caste	840	594	708	(-) 29.29	(+) 19.19
Other Backward Classes	878	1855	1474	(+) 111.28	(-) 20.54
Others	5274	4911	4819	(-) 6.88	(-) 1.87

**6. DISTRIBUTION OF SCHEDULED TRIBE EMPLOYEES ACCORDING TO STATUS BY MAIN TRIBES**

Out of the total 39528 Scheduled Tribe Employees, 23932 or 60.54% belonged to Khasis and Jaintias, 13882 or 35.12% to Garos and 1714 or 4.34% to other communities who were recognised as scheduled tribes. The table below shows the details.

Status		Khasi & Jaintia	Garos	Other Tribes	Total
(1)		(2)	(3)	(4)	(5)
Gazetted	Group A	1409	378	24	1811
	Group B	371	112	7	490
Non-Gazetted	Group B	1252	356	43	1651
	Group C	15975	10220	1307	27502
	Group D	4925	2816	333	8074
Grand Total		23932	13882	1714	39528

**7. NUMBER OF MEGHALAYA GOVERNMENT EMPLOYEES AS ON 31<sup>ST</sup> MARCH 1997 AND 2000**

The gazetted employees were more in East Khasi Khasi Hills with 1371 constituting 50.33% of the total gazetted officers of the State, because Shillong, the capital of the State is located in this district in which the Secretariat and the Heads of Department offices of the State government are situated. West Garo Hills was next with 422 gazetted officers and South Garo Hills had the lowest number of 85 only.

As indicated in the table below, the percentage of increase of the period 2000 over 1997, indicated the highest increase in South Garo Hills with 66.70% followed by East Garo Hills with 51.01% while the lowest increase of 4.02% only was in Ri-Bhoi district.

Districts	As on 31.03.1997				As on 31.03.2000				Percentage Increase (+) or Decrease (-) of 2000 over 1997
	Gazetted	Non-Gazetted	Grade-IV	Total	Gazetted	Non-Gazetted	Grade-IV	Total	
(1)	(2)	(3)	(4)	(5)	(6)	(7)	(8)	(9)	(10)
Jaintia Hills	280	3375	1169	4824	311	4143	1090	5544	(+) 14.93
East Khasi Hills	1309	12948	4314	18571	1371	14331	4270	19972	(+) 7.54
West Khasi Hills	181	2023	824	3028	192	2998	874	4064	(+) 34.21
East Garo Hills	126	1736	755	2617	158	2944	850	3952	(+) 51.01
West Garo Hills	385	4680	1741	6806	422	6741	1816	8979	(+) 31.93
Ri-Bhoi	143	1334	562	2039	184	1387	550	2121	(+) 4.02
South Garo Hills	69	744	325	1138	85	1441	371	1897	(+) 66.70
All Meghalaya	2493	26840	9690	39023	2723	33985	9821	46529	(+) 19.23

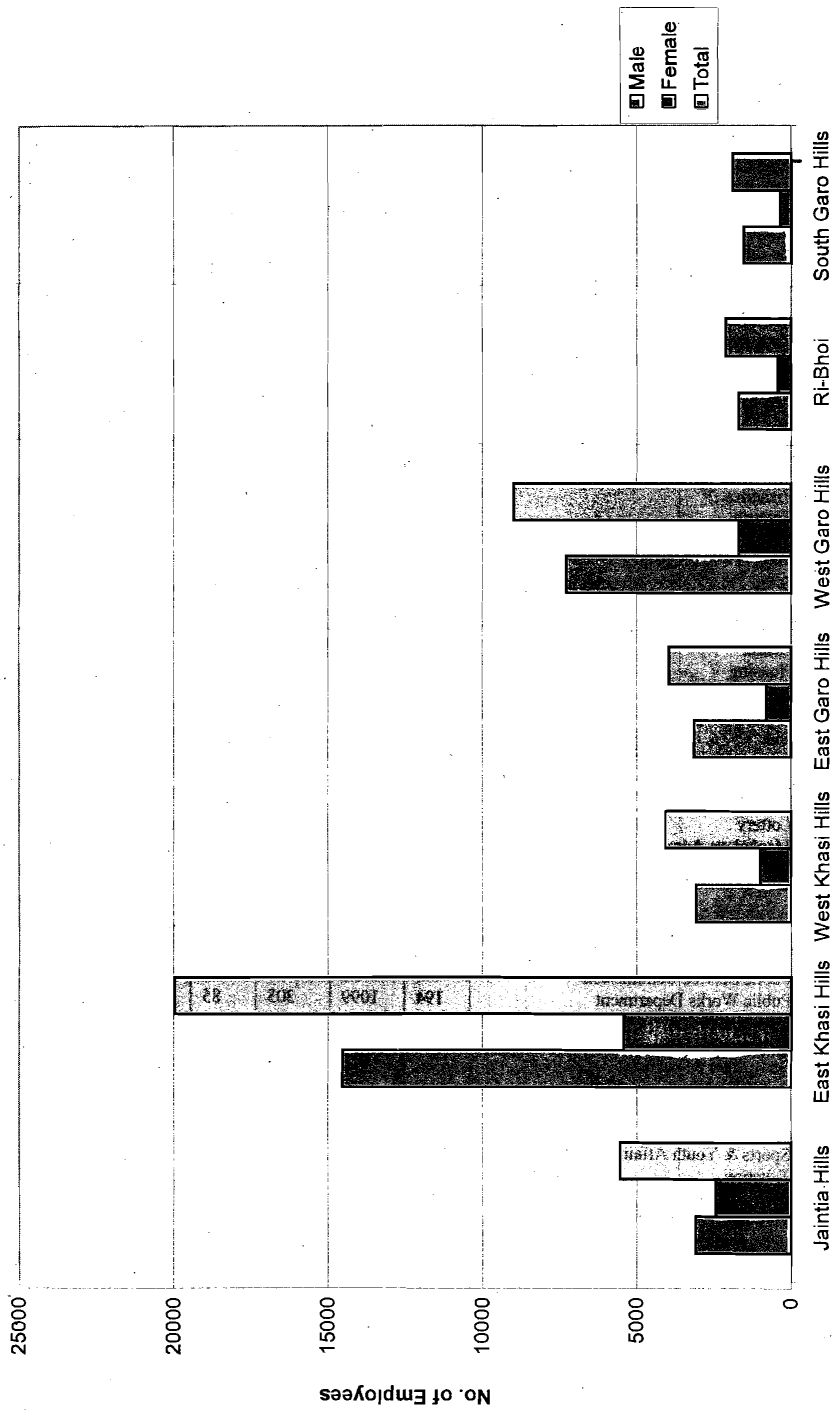
**8. DEPARTMENT-WISE NUMBER OF PERMANENT AND TEMPORARY EMPLOYEES BY STATUS**

The Health Department had the highest number of gazetted officers with 404 and grade IV employees with 1832, whereas the highest number of non-gazetted employees (excluding grade IV) was in the Education Department with 8251. The details are presented in the table at page 6.

It would also be seen that out of the 2028 permanent gazetted officers, Agriculture Department had the highest number with 294, followed by Health Department with 269 and Secretariat with 261. Amongst the temporary gazetted officers, Health Department had the highest number of 135 such officers. The Police Department had the highest number of permanent non-gazetted staff of 6780 and Health Department, the highest permanent grade IV staff of 1265.

Sl. No	Departments	Permanent			Temporary			All Employees		
		Gazetted	Non-Gazetted	Grade-IV	Gazetted	Non-Gazetted	Grade-IV	Gazetted	Non-Gazetted	Grade-IV
(1)	(2)	(3)	(4)	(5)	(6)	(7)	(8)	(9)	(10)	(11)
1	Accounts ✓	11	94	40	16	187	64	27	281	104
2	Agriculture	294	855	327	28	292	315	322	1147	642
3	Animal Husbandry & Veterinary	94	260	238	91	471	405	185	731	643
4	Arts & Culture	6	55	19	1	24	30	7	79	49
5	Assembly Secretariat ✓	29	78	82	3	19	17	32	97	99
6	Boiler Inspectorate ✓	2	7	2	-	-	-	2	7	2
7	Border Areas Development ✓	16	38	32	2	6	4	18	44	36
8	Civil Defence & Home Guards ✓	10	1005	119	-	10	1	10	1015	120
9	Civil Task Force	-	1	-	-	9	5	-	10	5
10	Community & Rural Development ✓	33	638	85	6	280	37	39	918	122
11	Cooperation ✓	26	140	43	1	20	20	27	160	63
12	Economics & Statistics ✓	21	119	26	5	76	11	26	195	37
13	Education including NCC ✓	197	4564	511	45	3687	203	242	8251	714
14	Election	1	60	19	-	56	21	1	116	40
15	Electrical Inspectorate	-	9	7	2	4	1	2	13	8
16	Employment	12	79	33	8	88	38	20	167	71
17	Excise ✓	6	134	7	3	115	12	9	249	19
18	Fisheries ✓	14	75	84	4	100	57	18	175	141
19	Finance ✓	11	1	-	9	1	-	20	2	-
20	Forest	42	408	86	9	682	251	51	1090	337
21	Food & Civil Supplies	16	127	34	3	25	8	19	152	42
22	GAD, DC's Office, Meghalaya Houses	6	435	348	3	126	127	9	561	475
23	Geology & Mining	20	44	22	15	93	74	35	137	96
24	Governor's Secretariat	6	13	62	-	7	2	6	20	64
25	Health	269	2154	1265	135	709	567	404	2863	1832
26	Housing ✓	10	49	21	4	30	9	14	79	30
27	Industries ✓	21	153	87	39	76	52	60	229	139
28	Information & Public Relations	14	94	40	3	15	14	17	109	54
29	Jail	9	128	26	2	37	6	11	165	32
30	Judicial including High Court ✓	5	29	13	1	8	19	6	37	32
31	Labour	9	33	23	3	14	11	12	47	34
32	Land Records & Surveys	4	98	27	-	15	185	4	113	212
33	Lottery	-	-	-	-	14	10	-	14	10
34	Meghalaya Adm. Training Institute	1	1	-	-	9	10	1	10	10
35	Planning	23	28	16	6	11	7	29	39	23
36	Police	68	6780	287	12	599	35	80	7379	322
37	Printing & Stationery	7	266	17	1	102	36	8	368	53
38	Programme Implementation	4	2	-	6	10	5	10	12	5
39	Public Health Engineering ✓	74	395	118	50	692	512	124	1087	630
40	Public Service Commission	4	38	11	-	1	8	4	39	19
41	Public Works Department	194	1099	305	85	1437	697	279	2536	1002
42	Registration	-	10	3	-	4	1	-	14	4
43	Secretariat	261	502	281	-	489	145	261	991	426
44	Sericulture & Weaving ✓	24	383	181	3	118	86	27	501	267
45	Small Savings	-	4	-	-	1	1	-	5	1
46	Social Welfare	15	104	34	32	231	70	47	335	104
47	Soil Conservation	67	763	254	1	162	102	68	925	356
48	Sports & Youth Affairs	4	13	6	4	37	26	8	50	32
49	Taxation	27	59	31	45	52	83	72	111	114
50	Tourism ✓	6	26	35	-	-	-	6	26	35
51	Transport	6	128	44	4	19	7	10	147	51
52	Urban Affairs ✓	26	76	32	3	5	4	29	81	36
53	Weights & Measures ✓	3	29	12	2	27	15	5	56	27
	GRAND TOTAL	2028	22683	5395	695	11302	4426	2723	33985	9821

**DISTRICT-WISE BREAK UP OF EMPLOYEES**



**9. NUMBER OF EMPLOYEES ACCORDING TO SEX AND DISTRICT OF POSTING**

It would also be seen from the table below that in relation to the total number of employees of the district, Jaintia Hills had taken the lead in employing women in terms of percentages. In Jaintia Hills, the female employees accounted for 44.01% of the total number of Government employees in the district. Next came East Khasi Hills with 27.24%, West Khasi Hills with 24.46% and the lowest percentage was in South Garo Hills District with 18.87%.

<i>Districts</i>	<i>Male</i>	<i>Female</i>	<i>Total</i>	<i>Female employees as percentage of District Total</i>
<i>(1)</i>	<i>(2)</i>	<i>(3)</i>	<i>(4)</i>	<i>(5)</i>
Jaintia Hills	3104	2440	5544	44.01
East Khasi Hills	14531	5441	19972	27.24
West Khasi Hills	3070	994	4064	24.46
East Garo Hills	3144	808	3952	20.45
West Garo Hills	7274	1705	8979	18.99
Ri-Bhoi	1690	431	2121	20.32
South Garo Hills	1639	358	1897	18.87

**10. PERCENTAGE DISTRIBUTION OF EMPLOYEES ACCORDING TO PLACE OF POSTING**

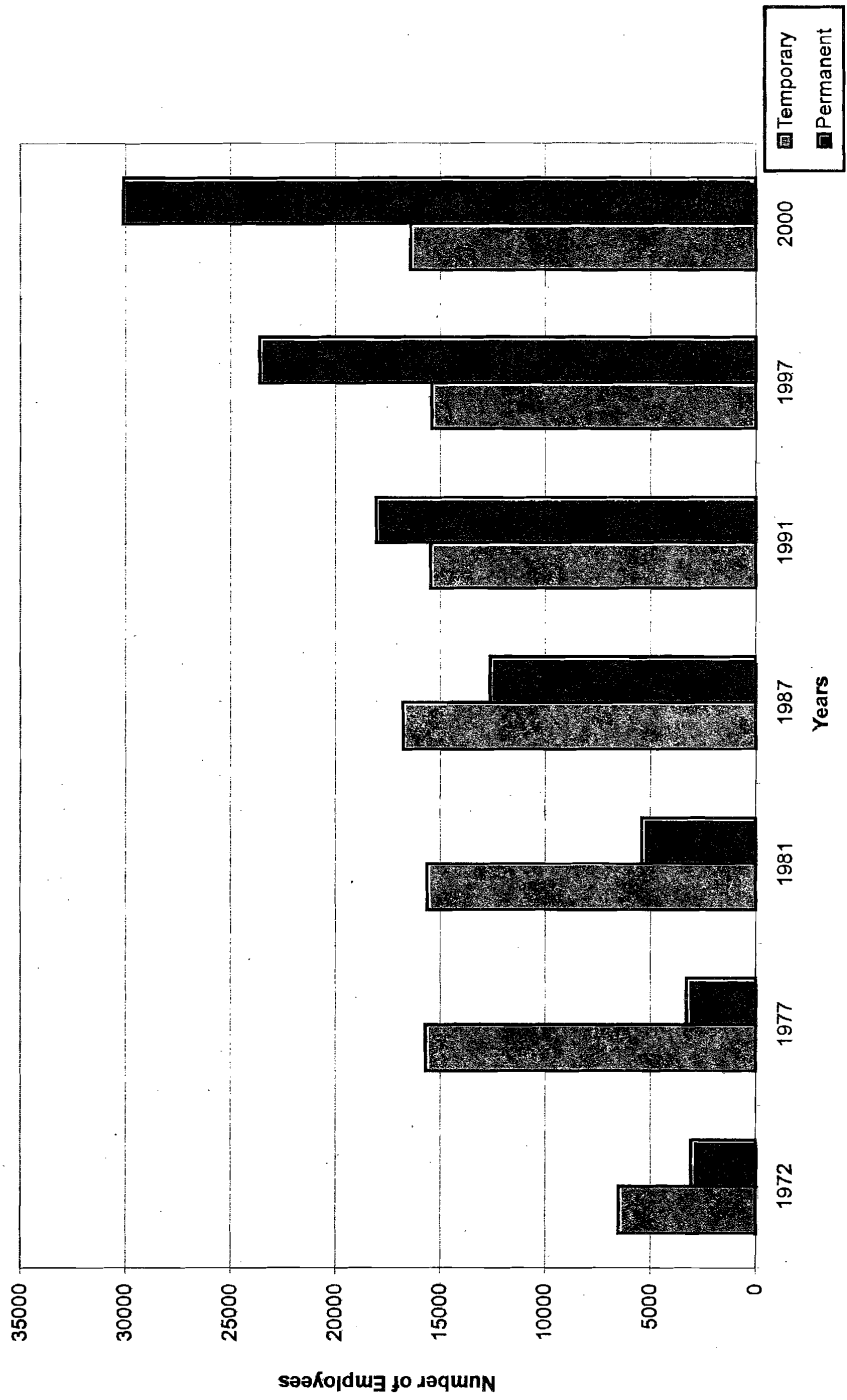
The number of employees in the urban areas of the State stood at 25660 accounting to 55.15% of the total employees and 20869 or 44.85% were those serving in rural areas. It may be mentioned that the percentage of employees in the rural areas had gone up from 35.71% in 1997 to 44.85% in 2000. About 25.38% of the gazetted officers were in rural areas, the percentages of non-gazetted and grade IV employees in the rural were 46.95% and 43.00% respectively.

<i>Status</i>	<i>Rural</i>		<i>Urban</i>		<i>Total</i>	
	<i>Number</i>	<i>Percentage</i>	<i>Number</i>	<i>Percentage</i>	<i>Number</i>	<i>Percentage</i>
<i>(1)</i>	<i>(2)</i>	<i>(3)</i>	<i>(4)</i>	<i>(5)</i>	<i>(6)</i>	<i>(7)</i>
Gazetted	691	25.38	2032	74.62	2723	100.00
Non-Gazetted	15955	46.95	18030	53.05	33985	100.00
Grade - IV	4223	43.00	5598	57.00	9821	100.00
Total	20869	44.85	25660	55.15	46529	100.00

*TABLES*

*Table Nos. 1 to 22*

# TEMPORARY AND PERMANENT DISTRIBUTION OF EMPLOYEES





**TABLE No. 1**

**CENSUS OF MEGHALAYA GOVERNMENT EMPLOYEES AT A GLANCE**

Sl. No	Particulars	As on 31 <sup>st</sup> March						
		1972	1977	1981	1987	1991	1997	2000
(1)	(2)	(3)	(4)	(5)	(6)	(7)	(8)	(9)
1.	Total Employees							
	(i) Gazetted	491	1,045	1,293	1,900	2,017	2,493	2,723
	(ii) Non-Gazetted	4,563	12,775	13,686	19,314	22,356	26,840	33,985
	(iii) Grade-IV	4,531	5,153	6,047	8,166	9,144	9,690	9,821
2.	Permanent Employees							
	(i) Gazetted	225	418	556	1,171	1,368	1,806	2,028
	(ii) Non-Gazetted	1,274	2,415	4,275	8,862	13,181	17,281	22,683
	(iii) Grade-IV	1,571	441	576	2,584	3,501	4,523	5,395
3.	Temporary Employees							
	(i) Gazetted	266	627	737	729	649	687	695
	(ii) Non-Gazetted	3,289	10,360	9,411	10,452	9,175	9,559	11,302
	(iii) Grade-IV	2,960	4,712	5,471	5,582	5,643	5,167	4,426
4.	Scheduled Tribe Employees							
	(i) Gazetted	249	600	857	1,342	1,563	2,015	2,301
	(ii) Non-Gazetted	2,942	8,301	9,970	14,974	17,869	22,015	29,153
	(iii) Grade-IV	2,014	3,023	3,910	5,769	7,093	7,633	8,074
5.	Women Employees	981						
	(i) Gazetted		107	191	366	467	672	800
	(ii) Non-Gazetted		2,144	2,990	4,466	5,098	6,527	9,779
	(iii) Grade-IV		318	432	868	1,135	1,420	1,598

**TRENDS IN MEGHALAYA GOVERNMENT EMPLOYEES BY SEX**

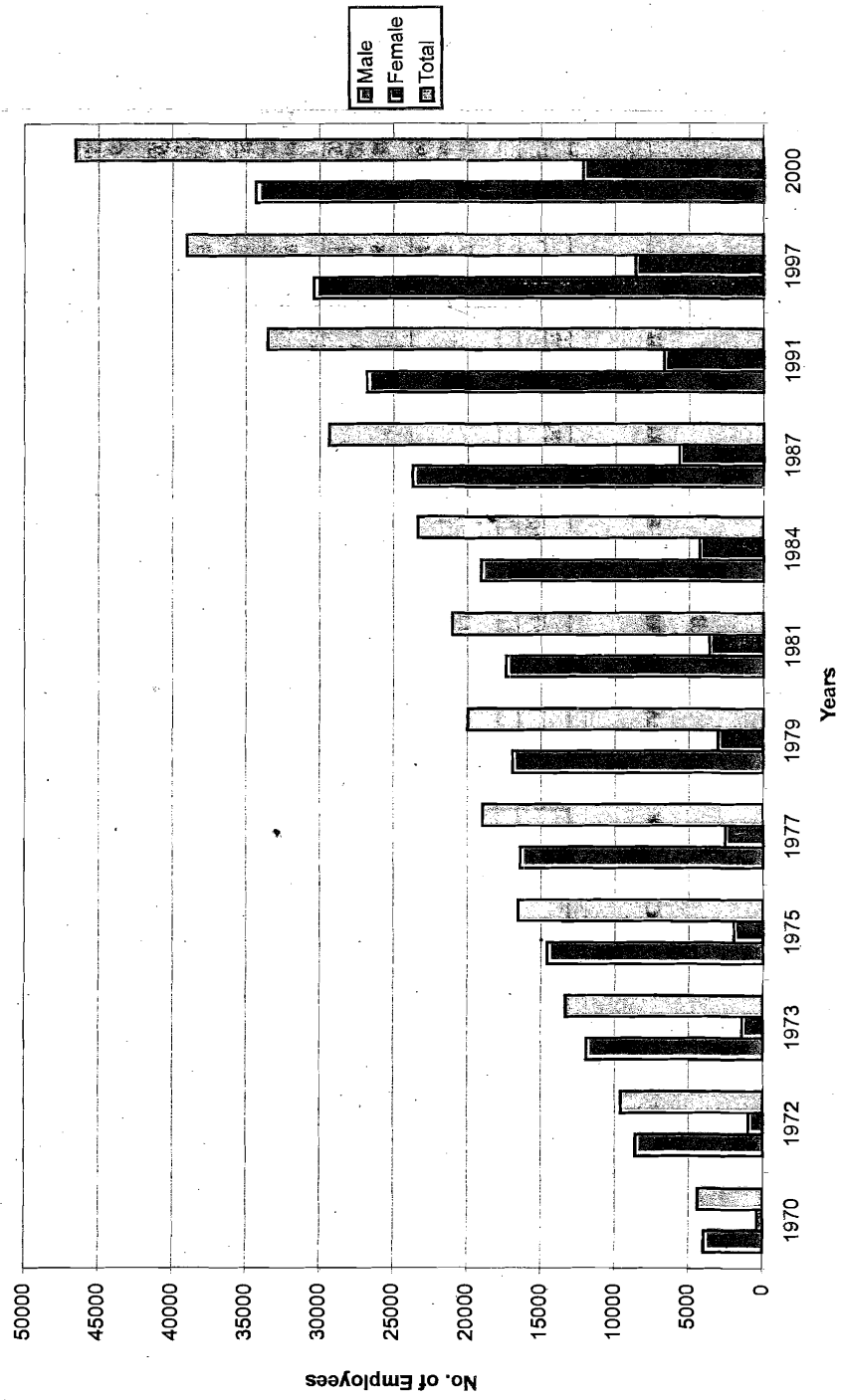


TABLE No. 2

## POPULATION PER STATE GOVERNMENT EMPLOYEE BY DISTRICT.

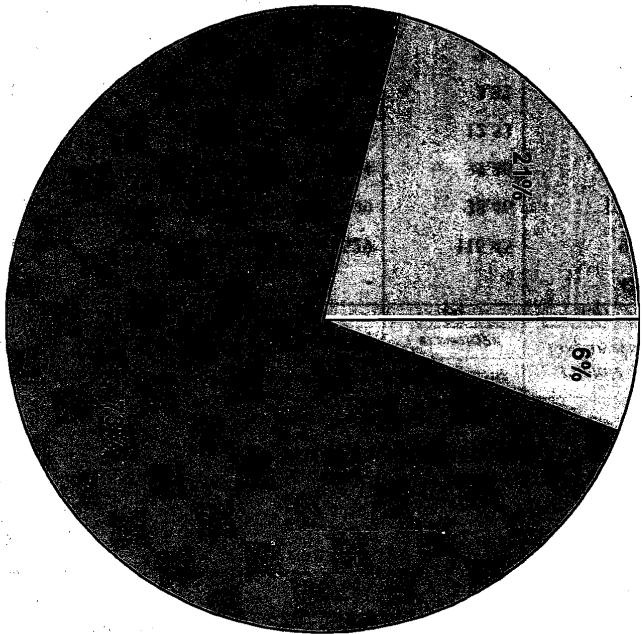
<i>Districts</i>	<i>Estimated population 2000</i>	<i>No. of Government Employees as on 31.03.2000.</i>	<i>Population per Govt. Employee</i>
<i>(1)</i>	<i>(2)</i>	<i>(3)</i>	<i>(4)</i>
Jaintia Hills	3,00,288	5,544	54
East Khasi Hills	6,84,269	19,972	34
West Khasi Hills	2,90,826	4,064	72
East Garo Hills	2,52,790	3,952	64
West Garo Hills	5,12,220	8,979	57
Ri-Bhoi	1,57,867	2,121	74
South Garo Hills	93,254	1,897	49
Total	22,91,514	46,529	49

TABLE No. 3

## GROWTH OF MALE AND FEMALE EMPLOYEES

<i>As on 31<sup>st</sup> March</i>	<i>Male Employees</i>	<i>Growth over previous census</i>		<i>Female Employees</i>	<i>Growth over previous census</i>	
		<i>Number</i>	<i>Percentage</i>		<i>Number</i>	<i>Percentage</i>
<i>(1)</i>	<i>(2)</i>	<i>(3)</i>	<i>(4)</i>	<i>(5)</i>	<i>(6)</i>	<i>(7)</i>
1970	3,975	-	-	420	-	-
1972	8,604	4,629	116.45	981	561	133.57
1973	11,913	3,309	38.46	1,393	412	42.00
1975	14,577	2,664	22.36	1,979	586	42.07
1977	16,404	1,827	12.53	2,569	590	29.81
1979	16,949	545	3.32	3,056	487	18.96
1981	17,363	414	2.44	3,663	607	19.86
1984	19,060	1,697	9.77	4,291	628	17.14
1987	23,680	4,620	24.24	5,700	1,409	32.84
1991	26,817	3,137	13.25	6,700	1,000	17.54
1997	30,404	3,587	13.38	8,619	1,919	28.64
2000	34,352	3,948	12.99	12,177	3,558	41.28

**CLASSIFICATION OF SERVICE OF GOVERNMENT EMPLOYEES**



**TABLE No. 4****NUMBER OF STATE GOVERNMENT EMPLOYEES ACCORDING TO STATUS AND SEX  
AS ON 31<sup>ST</sup> MARCH, 2000.**

<i>Status</i>	<i>Male</i>	<i>Female</i>	<i>Total</i>
<i>(1)</i>	<i>(2)</i>	<i>(3)</i>	<i>(4)</i>
Gazetted	1,923 (4.13)	800 (1.72)	2,723 (5.85)
Non-Gazetted	24,206 (52.02)	9,779 (21.02)	33,985 (73.04)
Grade-IV	8,223 (17.68)	1,598 (3.43)	9,821 (21.11)
Total	34,352 (73.83)	12,177 (26.17)	46,529 (100.00)

*Figures in brackets are percentages to all Employees*

**TABLE No. 5****NUMBER OF EMPLOYEES BY STATUS AND DISTRICT OF POSTING**

<i>Districts</i>	<i>Gazetted</i>		<i>Non-Gazetted</i>			<i>Total</i>	<i>Percentage to Total</i>
	<i>Group A</i>	<i>Group B</i>	<i>Group B</i>	<i>Group C</i>	<i>Group D</i>		
<i>(1)</i>	<i>(2)</i>	<i>(3)</i>	<i>(4)</i>	<i>(5)</i>	<i>(6)</i>	<i>(7)</i>	<i>(8)</i>
Jaintia Hills	264	47	262	3,881	1,090	5,544	11.92
East Khasi Hills	1,093	278	991	13,340	4,270	19,972	42.92
West Khasi Hills	150	42	177	2,821	874	4,064	8.73
East Garo Hills	116	42	119	2,825	850	3,952	8.49
West Garo Hills	319	103	307	6,434	1,816	8,979	19.30
Ri-Bhoi	121	63	80	1,307	550	2,121	4.56
South Garo Hills	65	20	62	1,379	371	1,897	4.08
All Meghalaya	2,128	595	1,998	31,987	9,821	46,529	100.00

DISTRIBUTION OF EMPLOYEES BY DEPARTMENTS

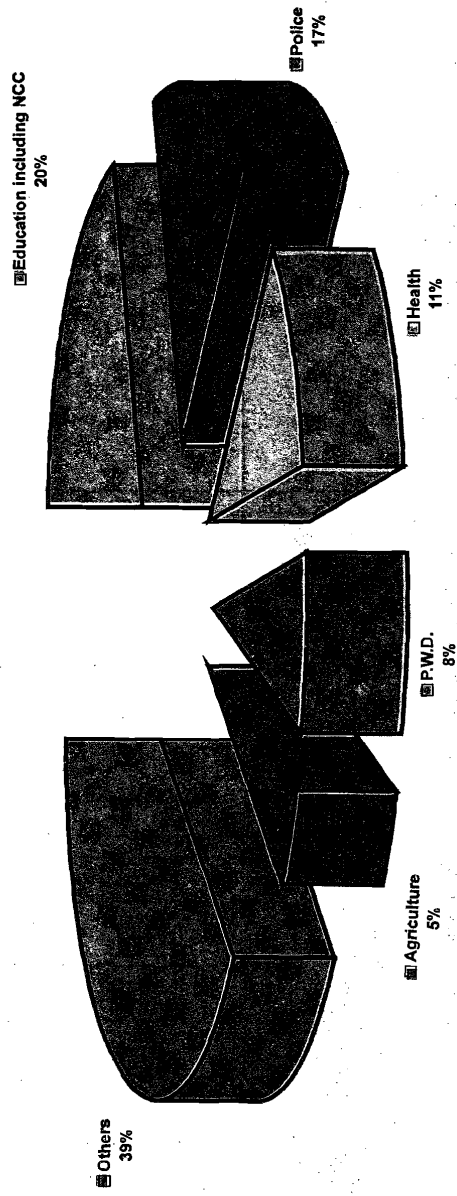


TABLE No. 6

## DEPARTMENT-WISE PERCENTAGE DISTRIBUTION OF EMPLOYEES BY SEX

Sl. No	Departments	Male		Female		Total Number of employees
		Number	Percentage	Number	Percentage	
(1)	(2)	(3)	(4)	(5)	(6)	(7)
1.	Accounts	274	66.50	138	33.50	412
2.	Agriculture	1,715	81.24	396	18.76	2,111
3.	Animal Husbandry & Veterinary	1,198	76.84	361	21.16	1,559
4.	Arts & Culture	75	55.56	60	44.44	135
5.	Assembly Secretariat	154	67.54	74	32.46	228
6.	Boiler Inspectorate	8	72.73	3	27.27	11
7.	Border Areas Development	81	82.65	17	17.35	98
8.	Civil Defence & Home Guards	1,090	95.20	55	4.80	1,145
9.	Civil Task Force	12	80.00	3	20.00	15
10.	Community & Rural Development	854	79.15	225	20.85	1,079
11.	Cooperation	168	67.20	82	32.80	250
12.	Economics & Statistics	198	76.74	60	23.26	258
13.	Education including NCC	5,303	57.60	3,904	42.40	9,207
14.	Election	105	66.88	52	33.12	157
15.	Electrical Inspectorate	13	56.52	10	43.48	23
16.	Employment	173	67.05	85	32.95	258
17.	Excise	236	85.20	41	14.80	277
18.	Fisheries	274	82.04	60	17.96	334
19.	Finance	13	59.09	9	40.91	22
20.	Forest	1,295	87.62	183	12.38	1,478
21.	Food & Civil Supplies	159	74.65	54	25.35	213
22.	GAD, DC's Office, Meghalaya Houses	741	70.91	304	29.09	1,045
23.	Geology & Mining	226	84.33	42	15.67	268
24.	Governor's Secretariat	76	84.44	14	15.56	90
25.	Health	2,720	53.34	2,379	46.66	5,099
26.	Housing	79	64.23	44	35.77	123
27.	Industries	314	73.36	114	26.64	428
28.	Information & Public Relations	151	83.89	29	16.11	180
29.	Jail	172	82.69	36	17.31	208
30.	Judicial including High Court	52	69.33	23	30.67	75
31.	Labour	57	61.29	36	38.71	93
32.	Land Records & Surveys	284	86.32	45	13.68	329
33.	Lottery	15	62.50	9	37.50	24
34.	Meghalaya Adm. Training Institute	16	76.19	5	23.81	21
35.	Planning	58	63.74	33	36.26	91
36.	Police	7,493	96.30	288	3.70	7,781
37.	Printing & Stationery	327	76.22	102	23.78	429
38.	Programme Implementation	17	62.96	10	37.04	27
39.	Public Health Engineering	1,532	83.22	309	16.78	1,841
40.	Public Service Commission	37	59.68	25	40.32	62
41.	Public Works Department	3,009	78.83	808	21.17	3,817
42.	Registration	6	33.33	12	66.67	18
43.	Secretariat	916	54.59	762	45.41	1,678
44.	Sericulture & Weaving	570	71.70	225	28.30	795
45.	Small Savings	3	50.00	3	50.00	6
46.	Social Welfare	209	43.00	277	57.00	486
47.	Soil Conservation	1,190	88.21	159	11.79	1,349
48.	Sports & Youth Affairs	69	76.67	21	23.33	90
49.	Taxation	213	71.72	84	28.28	297
50.	Tourism	52	77.61	15	22.39	67
51.	Transport	174	83.65	34	16.35	208
52.	Urban Affairs	103	70.55	43	29.45	146
53.	Weights & Measures	73	82.95	15	17.05	88
	GRAND TOTAL	34,352	73.83	12,177	26.17	46,529

TABLE No. 7

## DEPARTMENT-WISE DISTRIBUTION OF EMPLOYEES BY STATUS AND BY SEX

Sl. No	Departments	Gazetted			Non-Gazetted			Grade-IV		
		Male	Female	Total	Male	Female	Total	Male	Female	Total
(1)	(2)	(3)	(4)	(5)	(6)	(7)	(8)	(9)	(10)	(11)
1.	Accounts	21	6	27	167	114	281	86	18	104
2.	Agriculture	210	112	322	921	226	1,147	584	58	642
3.	Animal Husbandry & Veterinary	120	65	185	556	175	731	522	121	643
4.	Arts & Culture	3	4	7	36	43	79	36	13	49
5.	Assembly Secretariat	21	11	32	72	25	97	61	38	99
6.	Boiler Inspectorate	2	-	2	4	3	7	2	-	2
7.	Border Areas Development	18	-	18	31	13	44	32	4	36
8.	Civil Defence & Home Guards	10	-	10	982	33	1,015	98	22	120
9.	Civil Task Force	-	-	-	7	3	10	5	-	5
10.	Community & Rural Development	31	8	39	718	200	918	105	17	122
11.	Cooperation	25	2	27	88	72	160	55	8	63
12.	Economics & Statistics	24	2	26	145	50	195	29	8	37
13.	Education including NCC	130	112	242	4,595	3,656	8,251	578	136	714
14.	Election	1	-	1	68	48	116	36	4	40
15.	Electrical Inspectorate	2	-	2	5	8	13	6	2	8
16.	Employment	13	7	20	101	66	167	59	12	71
17.	Excise	9	-	9	210	39	249	17	2	19
18.	Fisheries	16	2	18	125	50	175	133	8	141
19.	Finance	11	9	20	2	-	2	-	-	-
20.	Forest	47	4	51	947	143	1,090	301	36	337
21.	Food & Civil Supplies	18	1	19	112	40	152	29	13	42
22.	GAD, DC's Office, Meghalaya Houses	8	1	9	342	219	561	391	84	475
23.	Geology & Mining	33	2	35	106	31	137	87	9	96
24.	Governor's Secretariat	5	1	6	17	3	20	54	10	64
25.	Health	198	206	404	1,165	1,698	2,863	1,357	475	1,832
26.	Housing	12	2	14	40	39	79	27	3	30
27.	Industries	55	5	60	137	92	229	122	17	139
28.	Information & Public Relations	15	2	17	87	22	109	49	5	54
29.	Jail	10	1	11	134	31	165	28	4	32
30.	Judicial including High Court	4	2	6	22	15	37	26	6	32
31.	Labour	10	2	12	17	30	47	30	4	34
32.	Land Records & Surveys	4	-	4	97	16	113	183	29	212
33.	Lottery	-	-	-	7	7	14	8	2	10
34.	Meghalaya Adm. Training Institute	1	-	1	8	2	10	7	3	10
35.	Planning	16	13	29	25	14	39	17	6	23
36.	Police	73	7	80	7,122	257	7,379	298	24	322
37.	Printing & Stationery	7	1	8	281	87	368	39	14	53
38.	Programme Implementation	7	3	10	8	4	12	2	3	5
39.	Public Health Engineering	116	8	124	809	278	1,087	607	23	630
40.	Public Service Commission	2	2	4	22	17	39	13	6	19
41.	Public Works Department	265	14	279	1,865	671	2,536	879	123	1,002
42.	Registration	-	-	-	4	10	14	2	2	4
43.	Secretariat	158	103	261	434	557	991	324	102	426
44.	Sericulture & Weaving	18	9	27	303	198	501	249	18	267
45.	Small Savings	-	-	-	2	3	5	1	-	1
46.	Social Welfare	7	40	47	121	214	335	81	23	104
47.	Soil Conservation	5	13	68	814	111	925	321	35	356
48.	Sports & Youth Affairs	7	1	8	38	12	50	24	8	32
49.	Taxation	66	6	72	55	56	111	92	22	114
50.	Tourism	2	4	6	15	11	26	35	-	35
51.	Transport	10	-	10	116	31	147	48	3	51
52.	Urban Affairs	23	6	29	54	27	81	26	10	36
53.	Weights & Measures	4	1	5	47	9	56	22	5	27
	GRAND TOTAL	1,923	800	2,723	24,206	9,779	33,985	8,223	1,598	9,821



TABLE No. 8

## CLASSIFICATION OF PERMANENT AND TEMPORARY EMPLOYEES BY SEX

Groups	Permanent		Temporary		Total	
	Male	Female	Male	Female	Male	Female
(1)	(2)	(3)	(4)	(5)	(6)	(7)
Group A	1,114	485	335	194	1,449	679
Group B	1,301	525	597	170	1,898	695
Group C	16,041	5,245	6,741	3,960	22,782	9,205
Group D	4,574	821	3,649	777	8,223	1,598
Total	23,030	7,076	11,322	5,101	34,352	12,177

TABLE No. 9

## DISTRICT-WISE NUMBER OF EMPLOYEES ACCORDING TO STATUS AND TENURE OF SERVICE

Districts	Permanent			Temporary			All Employees		
	Gazetted	Non-Gazetted	Grade-IV	Gazetted	Non-Gazetted	Grade-IV	Gazetted	Non-Gazetted	Grade-IV
(1)	(2)	(3)	(4)	(5)	(6)	(7)	(8)	(9)	(10)
Jaintia Hills	217	1,766	477	94	2,377	613	311	4,143	1,090
East Khasi Hills	1,056	10,747	2,489	315	3,584	1,781	1,371	14,331	4,270
West Khasi Hills	118	1,497	377	74	1,501	497	192	2,998	874
East Garo Hills	102	1,706	385	56	1,238	465	158	2,944	850
West Garo Hills	351	4,816	1,227	71	1,925	589	422	6,741	1,816
Ri-Bhoi	125	1,042	289	59	345	261	184	1,387	550
South Garo Hills	59	1,109	151	26	332	220	85	1,441	371
All Meghalaya	2,028	22,683	5,395	695	11,302	4,426	2,723	33,985	9,821

TABLE No. 10

## NUMBER OF FEMALE EMPLOYEES BY STATUS DURING 1991, 1997 &amp; 2000

Status	1991			1997			2000		
	All Employees	Female Employees	Percentage of female employees to total employees	All Employees	Female Employees	Percentage of female employees to total employees	All Employees	Female Employees	Percentage of female employees to total employees
(1)	(2)	(3)	(4)	(5)	(6)	(7)	(8)	(9)	(10)
Gazetted	2,017	467	23.15	2,493	672	26.96	2,723	800	29.38
Non-Gazetted	22,356	5,098	22.80	26,840	6,527	24.32	33,985	9,779	28.77
Grade - IV	9,144	1,135	12.41	9,690	1,420	14.65	9,821	1,598	16.27
Total	33,517	6,700	19.99	39,023	8,619	22.09	46,529	12,177	26.17

TABLE No. 11

## TREND IN EMPLOYMENT OF WOMEN BY MEGHALAYA GOVERNMENT

Departments	As on 31 <sup>st</sup> March				
	1972	1975	1981	1991	2000
(1)	(2)	(3)	(4)	(5)	(6)
Community & Rural Development	61 (100)	98 (161)	106 (174)	149 (244)	225 (369)
Education	219 (100)	326 (149)	562 (257)	814 (372)	3,904 (1783)
Health	264 (100)	549 (208)	920 (348)	1424 (539)	2379 (901)
Public Works	100 (100)	196 (196)	234 (234)	701 (701)	808 (808)
Secretariat	68 (100)	164 (241)	398 (585)	634 (932)	762 (1121)
Other Departments	269 (100)	646 (240)	1,443 (536)	2,978 (1107)	4,099 (1524)
Total	981 (100)	1,979 (202)	3,663 (373)	6,700 (683)	12,177 (1241)

Figures in brackets indicate index numbers with base 1972 = 100

**RURAL-URBAN DISTRIBUTION OF EMPLOYEES: BY STATUS**

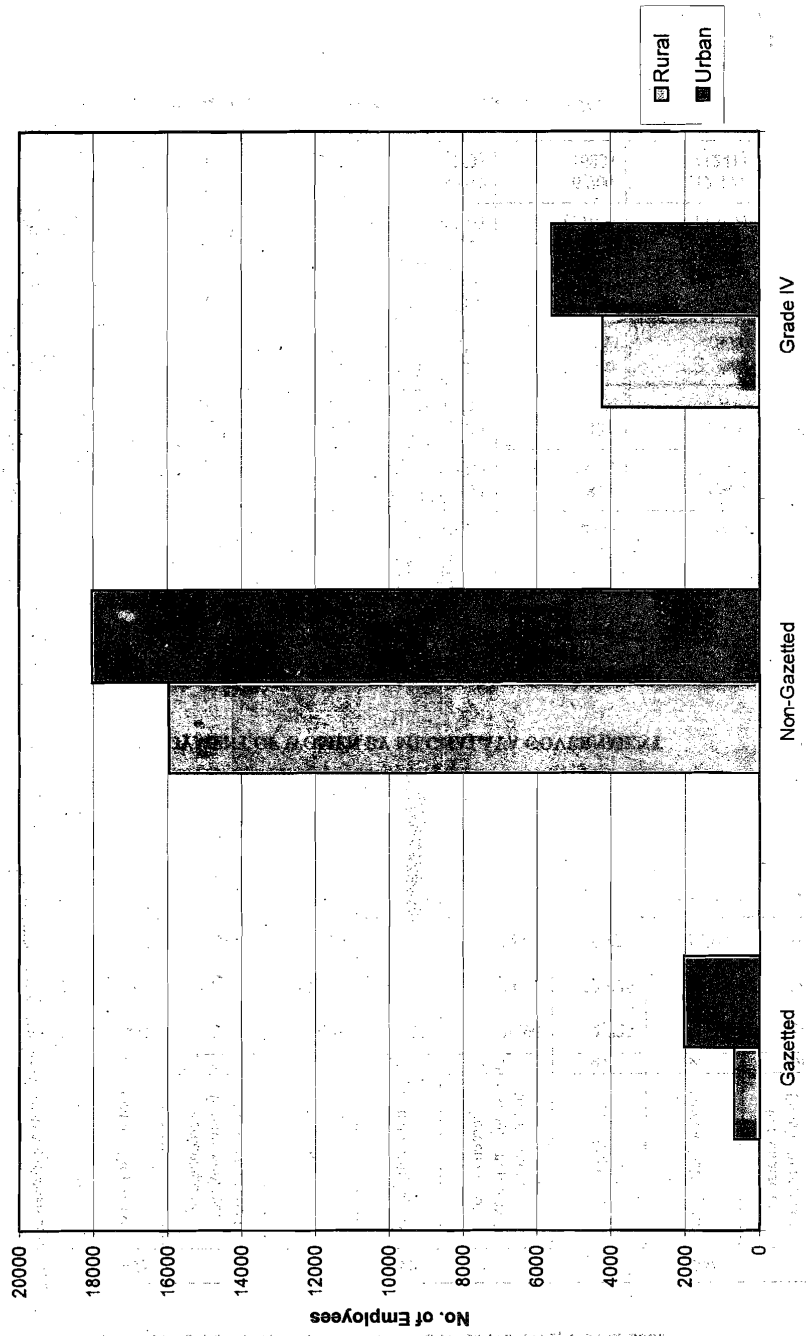


TABLE No. 12

## DISTRICT-WISE BREAK-UP OF EMPLOYEES ACCORDING TO SEX AND GROUP

Districts	Gazetted				Non-Gazetted						Total	
	Group A		Group B		Group B		Group C		Group D		Male	Female
	Male	Female	Male	Female	Male	Female	Male	Female	Male	Female		
(1)	(2)	(3)	(4)	(5)	(6)	(7)	(8)	(9)	(10)	(11)	(12)	(13)
Jaintia Hills	162	102	39	8	197	65	1,935	1,946	771	319	3,104	2,440
East Khasi Hills	727	366	190	88	649	342	9,566	3,774	3,399	871	14,531	5,441
West Khasi Hills	112	38	40	2	147	30	2,008	813	763	111	3,070	994
East Garo Hills	86	30	41	1	103	16	2,117	708	797	53	3,144	808
West Garo Hills	221	98	82	21	219	88	5,076	1,358	1,676	140	7,274	1,705
Ri-Bhoi	84	37	63	-	55	25	1,025	282	463	87	1,690	431
South Garo Hills	57	8	19	1	54	8	1,055	324	354	17	1,539	358
All Meghalaya	1,449	679	474	121	1,424	574	22,782	9,205	8,223	1,598	34,352	12,177

TABLE No. 13

## GROUP-WISE DISTRIBUTION OF GOVERNMENT EMPLOYEES ACCORDING TO PLACE OF POSTING

Groups	Rural			Urban		
	Male	Female	Total	Male	Female	Total
(1)	(2)	(3)	(4)	(5)	(6)	(7)
<b>Gazetted</b>						
Group A	373	173	546	1,076	506	1,582
Group B	141	4	145	333	117	450
<b>Non-Gazetted</b>						
Group B	492	122	614	932	452	1,384
Group C	10,919	4,422	15,341	11,863	4,783	16,646
Group D	3,744	479	4,223	4,479	1,119	5,598
<b>All Employees</b>	15,669	5,200	20,869	18,683	6,977	25,660

**DISTRIBUTION OF EMPLOYEES ACCORDING TO CASTES/TRIBES**

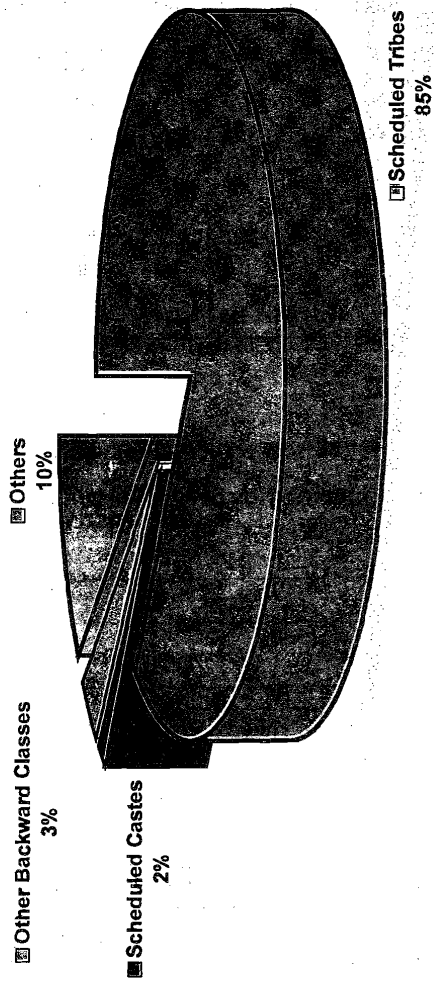


TABLE No. 14

## DISTRICT-WISE BREAK-UP OF EMPLOYEES ACCORDING TO PLACE OF POSTING

Districts	Rural				Urban			
	Gazetted	Non-Gazetted	Grade-IV	Total	Gazetted	Non-Gazetted	Grade-IV	Total
(1)	(2)	(3)	(4)	(5)	(6)	(7)	(8)	(9)
Jaintia Hills	103	2,576	615	3,294	208	1,567	475	2,250
East Khasi Hills	120	2,445	941	3,506	1,251	11,886	3,329	16,466
West Khasi Hills	103	2,247	540	2,890	89	751	334	1,174
East Garo Hills	65	2,123	525	2,713	93	821	325	1,239
West Garo Hills	140	4,475	954	5,569	282	2,266	862	3,410
Ri-Bhoi	140	1,159	434	1,733	44	228	116	388
South Garo Hills	20	930	214	1,164	65	511	157	733
All Meghalaya	691	15,955	4,223	20,869	2,032	18,030	5,598	25,660

TABLE No. 15

## NUMBER OF EMPLOYEES ACCORDING TO CASTE/TRIBE

Particulars	Gazetted		Non-Gazetted			All Employees
	Group A	Group B	Group B	Group C	Group D	
(1)	(2)	(3)	(4)	(5)	(6)	(7)
Scheduled Tribe	1,811	490	1,651	27,502	8,074	39,528
Scheduled Caste	32	12	28	402	234	708
Other Backward Classes	30	10	47	924	463	1,474
Others	255	83	272	3,159	1,050	4,819

TABLE No. 16

## DISTRIBUTION OF EMPLOYEES ACCORDING TO CASTE/TRIBE BY DEPARTMENTS

Sl. No	Departments	Scheduled Tribe	Scheduled Caste	Other Backward Classes	Others	Total
(1)	(2)	(3)	(4)	(5)	(6)	(7)
1.	Accounts	362	-	7	43	412
2.	Agriculture	1,900	31	25	155	2,111
3.	Animal Husbandry & Veterinary	1,382	51	26	100	1,559
4.	Arts & Culture	124	3	4	4	135
5.	Assembly Secretariat	206	-	-	22	228
6.	Boiler Inspectorate	9	-	-	2	11
7.	Border Areas Development	97	-	1	-	98
8.	Civil Defence & Home Guards	865	7	114	159	1,145
9.	Civil Task Force	11	-	-	4	15
10.	Community & Rural Development	1,013	2	17	47	1,079
11.	Cooperation	217	12	12	9	250
12.	Economics & Statistics	234	-	6	18	258
13.	Education including NCC	8,472	77	110	548	9,207
14.	Election	51	4	1	1	157
15.	Electrical Inspectorate	21	-	1	1	23
16.	Employment	234	-	3	21	258
17.	Excise	257	3	6	11	277
18.	Fisheries	320	5	4	5	334
19.	Finance	22	-	-	-	22
20.	Forest	1,265	31	71	111	1,478
21.	Food & Civil Supplies	191	1	5	16	213
22.	GAD, DC's Office, Meghalaya Houses	858	8	22	157	1,045
23.	Geology & Mining	231	1	3	33	268
24.	Governor's Secretariat	26	-	50	14	90
25.	Health	4,511	57	136	395	5,099
26.	Housing	110	2	4	7	123
27.	Industries	395	-	9	24	428
28.	Information & Public Relations	173	-	3	4	180
29.	Jail	141	33	10	24	208
30.	Judicial including High Court	57	-	-	18	75
31.	Labour	92	-	-	1	93
32.	Land Records & Surveys	296	1	4	28	329
33.	Lottery	23	-	-	1	24
34.	Meghalaya Adm. Training Institute	20	-	1	-	21
35.	Planning	84	-	4	3	91
36.	Police	5,538	108	512	1,623	7,781
37.	Printing & Stationery	290	1	23	115	429
38.	Programme Implementation	25	-	-	2	27
39.	Public Health Engineering	1,422	29	47	343	1,841
40.	Public Service Commission	59	-	2	1	62
41.	Public Works Department	2,951	199	138	529	3,817
42.	Registration	18	-	-	-	18
43.	Secretariat	1,580	1	38	59	1,678
44.	Sericulture & Weaving	710	19	18	48	795
45.	Small Savings	5	-	1	-	6
46.	Social Welfare	478	-	3	5	486
47.	Soil Conservation	1,270	17	9	53	1,349
48.	Sports & Youth Affairs	85	-	-	5	90
49.	Taxation	270	1	5	21	297
50.	Tourism	49	-	4	14	67
51.	Transport	188	2	12	6	208
52.	Urban Affairs	134	2	2	8	146
53.	Weights & Measures	86	-	1	1	88
	GRAND TOTAL	39,528	708	1,474	4,819	46,529

TABLE No. 17

## NUMBER OF EMPLOYEES BY CASTE/TRIBE ACCORDING TO STATUS AND TENURE OF SERVICE

<i>Status</i>	<i>Tenure of Service</i>	<i>Scheduled Tribe</i>	<i>Scheduled Caste</i>	<i>Other Backward Classes</i>	<i>Others</i>	<i>Total</i>
(1)	(2)	(3)	(4)	(5)	(6)	(7)
Gazetted	Permanent	1,676	36	36	280	2,028
	Temporary	625	8	4	58	695
Non-Gazetted	Permanent	19,018	261	793	2,611	22,683
	Temporary	10,135	169	178	820	11,302
Grade - IV	Permanent	4,289	111	344	651	5,395
	Temporary	3,785	123	119	399	4,426
All Employees	Permanent	24,983	408	1,173	3,542	30,106
	Temporary	14,545	300	301	1,277	16,423

TABLE No. 18

## DISTRICT-WISE DISTRIBUTION OF EMPLOYEES ACCORDING TO CASTE/TRIBE

<i>Districts</i>	<i>Scheduled Tribe</i>	<i>Scheduled Caste</i>	<i>Other Backward Classes</i>	<i>Others</i>	<i>Total</i>
(1)	(2)	(3)	(4)	(5)	(6)
Jaintia Hills	5,226	100	99	119	5,544
East Khasi Hills	16,407	147	861	2,557	19,972
West Khasi Hills	3,794	104	39	127	4,064
East Garo Hills	3,531	46	63	312	3,952
West Garo Hills	7,120	191	341	1,327	8,979
Ri-Bhoi	1,739	100	36	246	2,121
South Garo Hills	1,711	20	35	131	1,897
All Meghalaya	39,528	708	1,474	4,819	46,529



TABLE No. 19

## DISTRIBUTION OF SCHEDULED TRIBES IN MEGHALAYA GOVERNMENT SERVICE BY DEPARTMENTS

Sl. No	Departments	Khasi & Jaintia	Garo	Other Tribes	Total
(1)	(2)	(3)	(4)	(5)	(6)
1.	Accounts	274	78	10	362
2.	Agriculture	1,320	514	66	1,900
3.	Animal Husbandry & Veterinary	921	410	51	1,382
4.	Arts & Culture	96	27	1	124
5.	Assembly Secretariat	172	27	7	206
6.	Boiler Inspectorate	9	-	-	9
7.	Border Areas Development	63	33	1	97
8.	Civil Defence & Home Guards	364	392	109	865
9.	Civil Task Force	9	2	-	11
10.	Community & Rural Development	631	339	43	1,013
11.	Cooperation	166	47	4	217
12.	Economics & Statistics	173	61	-	234
13.	Education including NCC	4,259	3,928	285	8,472
14.	Election	99	48	4	151
15.	Electrical Inspectorate	21	-	-	21
16.	Employment	171	59	4	234
17.	Excise	156	87	14	257
18.	Fisheries	235	77	8	320
19.	Finance	22	-	-	22
20.	Forest	771	471	23	1,265
21.	Food & Civil Supplies	141	46	4	191
22.	GAD, DC's Office, Meghalaya Houses	566	252	40	858
23.	Geology & Mining	163	64	4	231
24.	Governor's Secretariat	22	-	4	26
25.	Health	3,135	1,250	126	4,511
26.	Housing	76	31	3	110
27.	Industries	249	134	12	395
28.	Information & Public Relations	133	40	-	173
29.	Jail	99	38	4	141
30.	Judicial including High Court	49	7	1	57
31.	Labour	67	25	-	92
32.	Land Records & Surveys	205	89	2	296
33.	Lottery	20	3	-	23
34.	Meghalaya Adm. Training Institute	17	3	-	20
35.	Planning	64	18	2	84
36.	Police	2,521	2,547	470	5,538
37.	Printing & Stationery	194	93	3	290
38.	Programme Implementation	23	2	-	25
39.	Public Health Engineering	865	486	71	1,422
40.	Public Service Commission	45	14	-	59
41.	Public Works Department	2,004	772	175	2,951
42.	Registration	18	-	-	18
43.	Secretariat	1,303	273	4	1,580
44.	Sericulture & Weaving	334	254	122	710
45.	Small Savings	4	1	-	5
46.	Social Welfare	316	159	3	478
47.	Soil Conservation	737	506	27	1,270
48.	Sports & Youth Affairs	59	25	1	85
49.	Taxation	217	53	-	270
50.	Tourism	37	12	-	49
51.	Transport	144	40	4	188
52.	Urban Affairs	108	24	2	134
53.	Weights & Measures	65	21	-	86
	GRAND TOTAL	23,932	13,882	1,714	39,528

*Other Tribes include Boro, Koch, Rabha, Hajong, etc.*

TABLE No. 20

## DISTRICT-WISE DISTRIBUTION OF SCHEDULED TRIBE EMPLOYEES

<i>Districts</i>	<i>Khasi &amp; Jaintia</i>	<i>Garo</i>	<i>Other Tribes</i>	<i>Total</i>
(1)	(2)	(3)	(4)	(5)
Jaintia Hills	5,076	93	57	5,226
East Khasi Hills	13,512	2,459	436	16,407
West Khasi Hills	3,465	284	45	3,794
East Garo Hills	63	3,245	223	3,531
West Garo Hills	283	6,012	825	7,120
Ri-Bhoi	1,499	211	29	1,739
South Garo Hills	34	1,578	99	1,711
All Meghalaya	23,932	13,882	1,714	39,528

TABLE No. 21

## NUMBER OF EMPLOYEES ACCORDING TO STATUS AND EDUCATIONAL QUALIFICATION

<i>Educational Qualification</i>	<i>Gazetted</i>		<i>Non-Gazetted</i>			<i>Total</i>
	<i>Group A</i>	<i>Group B</i>	<i>Group B</i>	<i>Group C</i>	<i>Group D</i>	
(1)	(2)	(3)	(4)	(5)	(6)	(7)
Below HSLC/Matric	-	-	81	12,762	8,546	21,389
HSLC/Matric	5	14	234	10,772	506	11,531
HSSLC/PU/Intermediate	40	19	216	4,174	109	4,558
Diploma in Engineering/Agriculture/ Veterinary, etc.	94	107	441	474	-	1,116
Degree in Arts/Science/Commerce	454	306	724	2,722	35	4,241
Degree in Engineering/Medical/Agriculture/ Veterinary, etc.	1,019	21	32	8	-	1,080
Post Graduate in Arts/Science/Commerce, etc. including Ph.D.	366	37	139	114	-	656
Post Graduate in Medical/ Veterinary/ Engineering, etc.	87	28	63	4	-	182
Qualification not stated	63	63	68	957	625	1,776
<b>TOTAL</b>	<b>2,128</b>	<b>595</b>	<b>1,998</b>	<b>31,987</b>	<b>9,821</b>	<b>46,529</b>

TABLE No. 22

NUMBER OF EMPLOYEES ACCORDING TO THE SCALES OF PAY AS ON 31<sup>ST</sup> MARCH, 2000

<i>Scales Of Pay (Rs.)</i>	<i>Group A</i>	<i>Group B</i>	<i>Group C</i>	<i>Group D</i>	<i>Total</i>
<i>(1)</i>	<i>(2)</i>	<i>(3)</i>	<i>(4)</i>	<i>(5)</i>	<i>(6)</i>
2440-40-2680-EB-50-3080-60-3680 (2900-65-3875)	-	-	-	9,524	9,524
2650-50-2950-EB-60-3430-70-4130 (3250-75-4375)	-	-	2,023	-	2,023
2900-60-3260-EB-70-3820-80-4620 (3600-85-4875)	-	-	7,120	-	7,120
3100-70-3520-EB-80-4160-90-5060 (3900-95-5325)	-	-	10,097	-	10,097
3450-80-3930-EB-90-4650-100-5650 (4300-105-5875)	-	-	6,588	-	6,588
3725-90-4265-EB-100-5065-110-6165 (4650-115-6375)	-	-	1,568	-	1,568
3975-100-4575-EB-110-5455-120-6655 (4950-125-6025)	-	-	1,545	-	1,545
4250-110-4910-EB-120-5870-130-7170 (5400-135-7425)	-	-	716	-	716
4500-120-5220-EB-130-6260-140-7660 (5750-145-7925)	-	-	728	-	728
4900-130-5680-EB-140-6800-150-8300 (6150-155-8475)	-	-	467	-	467
5100-140-5940-EB-150-7140-160-8740 (6500-165-8975)	-	-	1,045	-	1,045
5300-150-6200-EB-160-7480-170-9180 (6775-175-9400)	-	1,627	-	-	1,627
5500-160-6460-EB-175-7860-190-9760	-	459	-	-	459
5750-175-6800-EB-190-8320-200-10120	-	115	-	-	115
5900-190-7040-EB-200-8640-225-10440	-	178	-	-	178
6100-200-7300-EB-225-8875-240-10795	-	214	-	-	214
6350-225-7700-EB-240-9380-250-11130	1,169	-	-	-	1,169
6850-240-8290-EB-250-10040-260-11600	229	-	-	-	229
7750-250-9000-EB-275-10375-290-12115	232	-	-	-	232
8750-275-10400-EB-300-13100	265	-	-	-	265
10000-300-11800-EB-325-14075	104	-	-	-	104
10750-325-12700-350-14800	30	-	-	-	30
11750-375-13625-400-15625	35	-	-	-	35
13200-475-17000	5	-	-	-	5
Consolidated pay / Other pay scales not identical with the pay scales of the Govt. of Meghalaya	59	-	90	297	446
TOTAL	2,128	2,593	31,987	9,821	46,529

*Scales within brackets are extended scales*

**STATISTICS ON NUMBER OF MEGHALAYA STATE GOVERNMENT EMPLOYEES RETIRING FROM SERVICE AT THE AGE OF 58 YEARS,  
DURING THE 20 YEARS PERIOD (2000-2019)**

<i>Group of Service</i>	2000	2001	2002	2003	2004	2005	2006	2007	2008	2009	2010	2011	2012	2013	2014	2015	2016	2017	2018	2019
(1)	(2)	(3)	(4)	(5)	(6)	(7)	(8)	(9)	(10)	(11)	(12)	(13)	(14)	(15)	(16)	(17)	(18)	(19)	(20)	(21)
Group A	65	36	23	19	23	16	20	23	20	15	40	18	24	28	21	23	29	27	21	22
Group B	83	48	35	40	37	49	50	57	42	67	60	63	38	40	46	40	47	41	33	38
Group C	309	145	169	168	212	241	309	302	313	285	359	354	421	403	455	462	521	471	550	515
Group D *	46	47	40	50	63	67	85	75	103	99	125	119	162	132	181	196	195	246	221	246
Total	503	276	267	277	335	373	464	457	478	466	584	554	645	603	703	721	792	785	825	821

Note : The statistics are based on Superannuation age of 58 years of the Govt. of Meghalaya.  
The coverage is for 80 per cent of the total number of offices in the State.

\* Retiring age of Group D (Grade IV) employees is 60 years.