



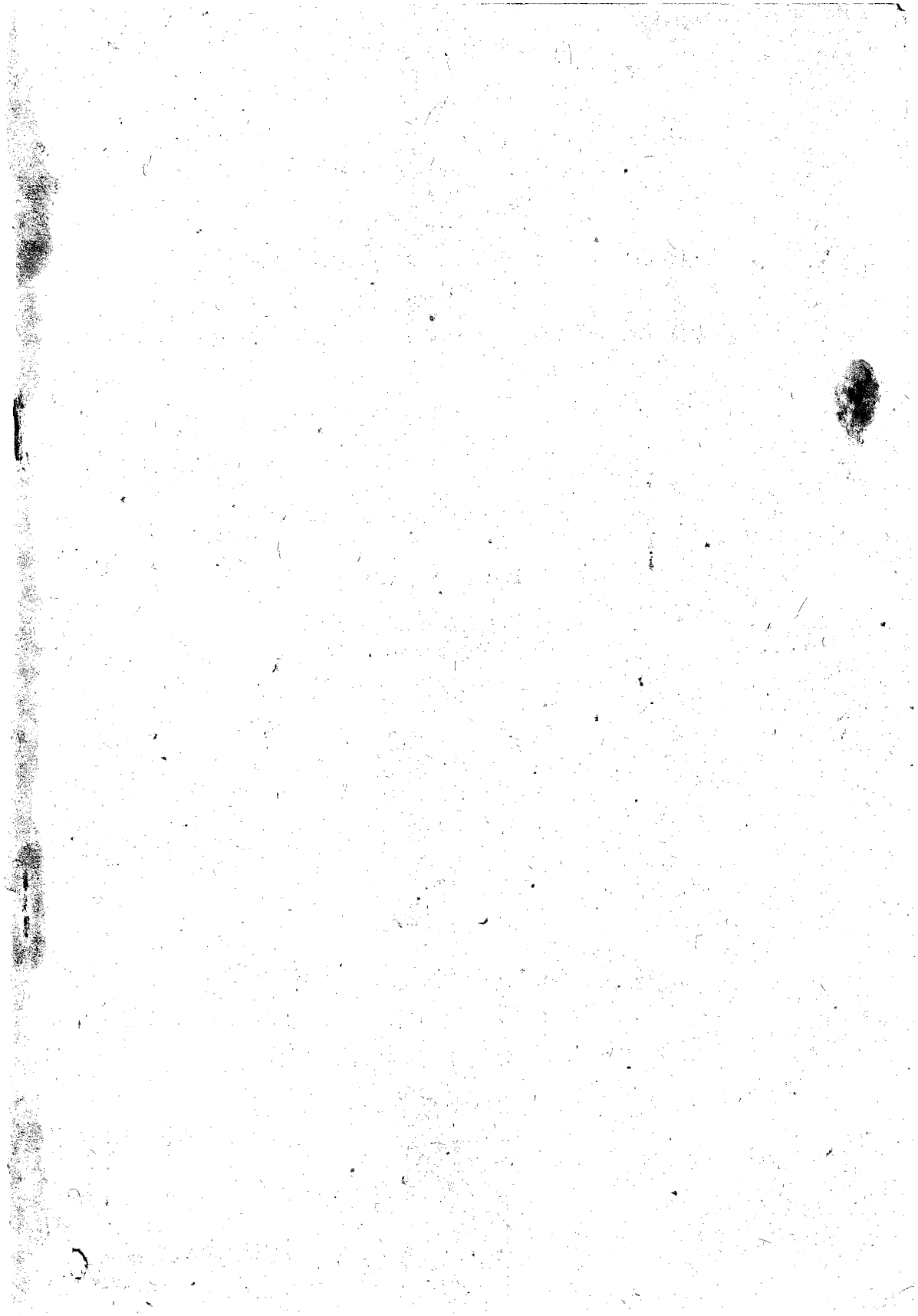
सत्यमेव जयते

GOVERNMENT OF MEGHALAYA

CENSUS
OF
STATE GOVERNMENT
EMPLOYEES

(As on 31st March, 1997)

DIRECTORATE OF ECONOMICS & STATISTICS
MEGHALAYA, SHILLONG.





सत्यमेव जयते

GOVERNMENT OF MEGHALAYA

CENSUS

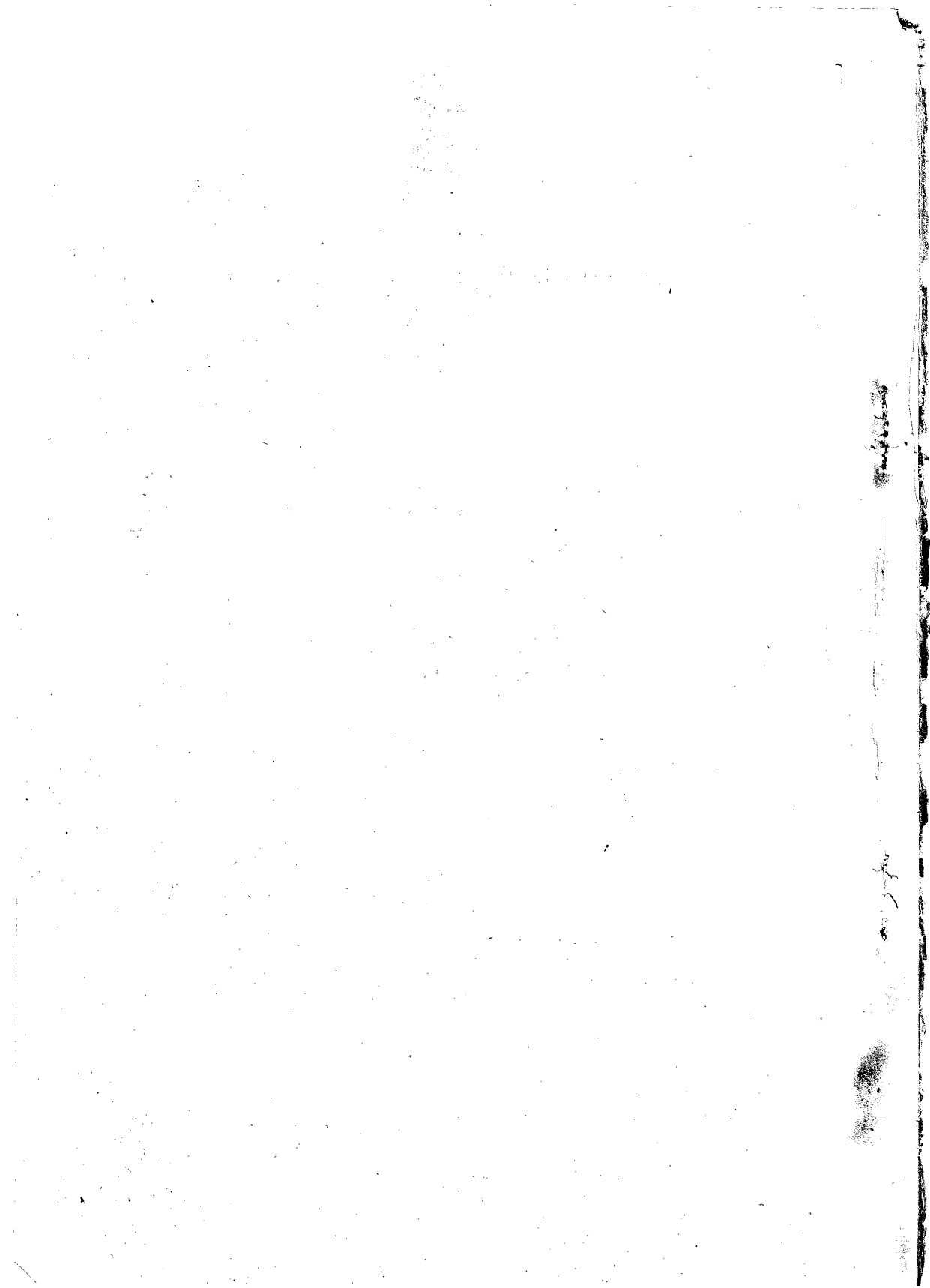
OF

**STATE GOVERNMENT
EMPLOYEES**

(As on 31st March, 1997)

DIRECTORATE OF ECONOMICS & STATISTICS

MEGHALAYA, SHILLONG.



C O N T E N T S

	Page No.
Foreword	i
Preface	ii
List of Staff engaged	iii
Reports on the Census of Meghalaya Government Employees 1997	1 - 3
Graphs	4 - 8
TABLE No.	
1. At a Glance	9
2. Trends in Employment in the State	10
3. Trends in Employment by Sex	10
4. Distribution of Employees by classification of Service : Group-wise, 1991 and 1997.	11
5. Number of Gazetted and Non-Gazetted Government Employees 1991 and 1997.	11
6. Distribution of State Government Employees by Caste/Tribe : Group-wise, 1991 and 1997.	12
7. District-wise break-up of employees by Group of service.	13
8. Percentage distribution of Government Employees Rural and Urban by group of service.	14
9. District-wise break-up of State Government Employees : Rural and Urban according to Group of service.	15
10. Distribution of Employees according to nature of work viz., Technical, Administrative, etc : Group-wise.	16
11. Number of Government Employees : Department-wise	17-18
12. District-wise distribution of Employees according to Group classification of service.	19
13. Number of Government Employees according to Status : Group-wise.	19
14. District-wise break-up of Employees by Sex and group of service.	20
15. Distribution of Government Employees by Mother-tongue : Group-wise.	21
16. Distribution of employees according to Educational Qualifications.	22

(i)

FOREWORD

The Directorate of Economics and Statistics, Government of Meghalaya has been conducting the Census of State Government Employees since 1972 with an objective to assess the volume of employment in the Government sector. The Census of State Government Employees of Meghalaya is conducted periodically to up-date the data series of employment profile of the Government Employees working in various Departments of the State. The present report is the tenth in the series and present data as on 31st March, 1997. The aim of the report is to provide useful information for effective planning and execution of welfare and services facilities for the employees.

The report has been finalised with the active co-operation of all the Heads of Departments/Offices both at the State Headquarters including Secretariat and the District Establishments.

I would like to thank all the functionaries of the Directorate of Economics and statistics associated with the conduct of the Census works and its tabulation for making this publication possible in a record time under the dynamic and able supervision of Shri W. Lining Lyngdoh, Director of Economics and Statistics, Meghalaya and his team of Officers and Staff.

Dated Shillong, the
30th, April, 1998.

(D.K. Gangopadhaya)
Chief Secretary,
Government of Meghalaya.

P R E F A C E

The Directorate of Economics and Statistics, Government of Meghalaya has been conducting the Census of State Government Employees since 1972. 'The Census of State Government Employees' quinquennially (except some years) to update the data series on employment profile of the Government Employees of Meghalaya working in various Departments of the State. The present Census as on 31st March, 1997 is the tenth in the series. The main objective of the Census is on the employment scenario of the State which would be useful for effective manpower planning, socio-economic development as well as for the welfare and service facilities for its employees.

The report has been finalised with the active co-operation of all the Departments/Offices of the State Government including the Heads of the Departments and the District Heads who had supplied the required information in time. I would like to place on record of the useful and hard works rendered by the Staff of the Directorate (list appended) in bringing out this publication in a record time. I would also like to thank the Officers of the Computer Cell, Programme Implementation Department, Meghalaya for the service in Printing the report.

Suggestions for improvement in the contents, layout and scope of this publication are most welcome.

Dated, Shillong,
the 29th April, 1998

(W. L. Lyngdoh)
Director,
Economics & Statistics,
Meghalaya, Shillong.

(iii)

**LIST OF STAFF ENGAGED IN THE CENSUS OF MEGHALAYA
GOVERNMENT EMPLOYEES, 1997.**

1. Shri S. D. Marak, Inspector of Statistics.
2. Shri A. C. Bora, Inspector of Statistics.
3. Smt. J. J. Umdor, Sub-Inspector of Statistics.
4. Smt. R. V. Syiemlieh, Sub-Inspector of Statistics.
5. Shri O Lyngkholi, Computer.
6. Shri H. Wallang, Computer.
7. Smt. S. Rymbai, Computer.
8. Smt. M. Sutnga, Computer.
9. Smt. M. Rynjah, Computer.

REPORT ON THE CENSUS OF MEGHALAYA GOVERNMENT EMPLOYEES

(As on 31st March, 1997)

The tenth series of the Census of State Government Employees covered all the employees of the Government of Meghalaya including those engaged or employed as work-charged and Adhoc employees as on 31st March, 1997. Employees and workers under the Local and Autonomous body and Public sector Undertaking are however outside the purview of the Census. The Census provides details on employment relating to status, class of service namely group of posts under gazetted and non-gazetted, tenure of service, sex-structure, etc. Details are given in the tables as placed accordingly. The return that we are prescribed and used for collection of Census data are placed at Annexure-A.

Census at a Glance :

The total number of employees as on 31st March, 1997 serving in the State Government was 39,023 as against 33,517 as on 31st March, 1991 indicating an increase of 16.4 percent over the period. Of the 39,023 number of Employees, 36,127 Employees were regular and 2,905 were non-regular (i.e. work-charged Employees and Adhoc). Table 1 of the report shows an over all changes at the level of regular and non-regular Employees as on 31st of March, 1991 and 1997. The Employees Population ratio of the State works out at 1:55 based on the projected population of the State as on 31st March, 1997.

Trends of Government Employees :

Over a period of twentyfive years, the trends emerging out of the Census data as presented in table 2 indicates an increase of 307.13 percent as on 31st March, 1997 over 1972, the year when Meghalaya attained full Statehood. It is observed that since the inception of the State of Meghalaya in 1972, the increase of number of Employees was 38.8 percent in 1973 as against 25.8 percent in 1987 and 24.4 percent in 1975 which registers a comparative high increase over the twentyfive years period.

Women Employment :

Women Employment in the State Government has been found to the extent of 8619 which was 22.09 percent of the total number of the State Government Employees. It is observed that the share of women employees has been constantly rising year after year since 1972. In the year 1972, the number of women employed in the State Government was only 10.23 percent or a total number of 981 only which indicate an increase of 778.59 percent over a period of twenty-five years that is, 1997 over 1972. It is also encouraging that the number of Females per one thousand Males registered an increase from one year to another with 283 females per one thousand males as on 31st March, 1997 as against 114 in 1972.

The number of women employees under Gazetted category rose to 672 in 1997 from 467 in 1991 showing an increase of 43.90 per cent whereas in the grade of non-gazetted, the increase was 28.03 per cent, that is from a number of 5098 in 1991 to 6527 in 1997. The number of Group 'D' women employees was 1420 in 1997 as against a total of 9690 which was 14.65 per cent of the total number of Group 'D' employees.

Class of Employees by Group of Posts Held :

The Census reveals that the proportion of Group-A employees increased marginally, that is, from 1482 to 1978 or a percentage of increase of only 5.07 per cent as per table 4. Likewise the Group 'B' Employees registered a marginal increase of only 4.97 per cent whereas the employees in the Group 'C' and Group 'D' increased by 65.13 per cent and 24.83 per cent respectively. The Census shows that the bulk of employees were at the level of Group 'C' and Group 'D' posts.

Under the Group 'B' class of State Government Employees, there are two categories of such employees which are placed as Gazetted and non-Gazetted as shown in table 5. As against the Gazetted Class of Group 'B' Posts, there was a decline from 535 in 1991 to 515 in 1997 and the percentage of decrease was at -3.74 per cent.

The Group 'A' Employees were more in East Khasi Hills district with a total number of 1022 because Shillong, the Capital of the State is within this District. West Garo Hills District is next with a total number of 310 Group 'A' Officers and Jaintia Hills with 239 followed by West Khasi Hills - 142, Ri-Bhoi District - 106, East Garo Hills District - 105 and South Garo Hills District with only 54 Group 'A' Officers. Likewise the number of Group 'B', Group 'C' and Group 'D' Categories are spread in the different Districts accordingly. As indicated in Table 7, the percentage of increase of a period 1997 over 1991 indicates a high increase in Jaintia Hills and West Khasi Hills with 29.09 per cent and 29.35 per cent respectively which are followed by West Garo Hills within 21.19 per cent. East Khasi Hills and East Garo Hills Districts registered an increase of 11.33 percent and 10.33 percent respectively.

Distribution of Employees in the Rural and Urban :

This series of the Census report covers for the first time, the spreads of Government employees in Urban and Rural separately. The number of employees in the rural constitutes 35.71 per cent of the total leaving 64.29 per cent those serving in urban area. Table 8 shows that 36.65 per cent of the Group 'A' Officers were in the rural and Group 'B' employees constitutes 29.21 per cent. The percentage of Group 'C' and Group 'D' in the rural were 35.95 per cent and 36.17 per cent respectively as on 31st March, 1997.

Technical/Professional Employees :

In Table 10, an analysis of number of Technical/Professional Employees shows that the number of such employees at the level of Group 'A' was 1325 as against the total of 1978 which indicates a percentage of 66.99 per cent in the whole State. At the level of Group 'C' the total number of the Technical Professional employees was 10,967 out of the total of 25,414 that is, 43.15 per cent of the total number of the Group 'C' Category. The over all picture of the State indicates that the percentage of such category of employees was 34.94 per cent with Group 'B' Technical/Professional employees accounted for 69.24 per cent out of the total of 1941 Group 'B' employees.

In the grade of Group 'A' Officers, there were a total of 1453 employees with Doctorate, Post-Graduate, Degree and Diploma in Veterinary, Medical, Engineering, Agriculture, Sericulture and Post-Graduate Degree in Science/Commerce/Arts. It's percentage was 73.46 per cent of the total number of 1978. The total number of such employees in all the levels was 2572 or 6.59 per cent of the total strength of the employees of 39,023.

Employment Under Different Departments :

Police Department recorded the highest number of employees with 7853 as on 31st March, 1997 as against 7033 in 1991 registering an increase of 11.66 per cent. The Department of Health and Family Welfare employed 11.02 per cent of the total number of employees whose total employees numbering 4299, it is followed by the Public Works Department with a total number of 3913 or 10.03 per cent. Education including Arts and Culture Department with 3037 total number of employees or 7.78 per cent. The Police Department employed 20.12 per cent of the total number of employees of 39,023.

Status of State Government Employees :

65.37 per cent of the regular State Government Employees were permanent whereas 34.63 per cent were temporary. Amongst the regular Group 'D' Employees, only 54.35 per cent were permanent out of the total of 8322. At the level of the Group 'C' Employees, 68.45 per cent were permanent as against the total number of regular Group 'C' Employees of 23,892. The Group 'A' and Group 'B' Employees accounted for 72.48 per cent and 67.53 per cent respectively as permanent regular employees.

The government is still having 7.44 per cent adhoc/work-charged employees with a total number of 2890 or 99.48 per cent at the level of Group 'C' and 'D' only out of the total number 2905 of such employees.

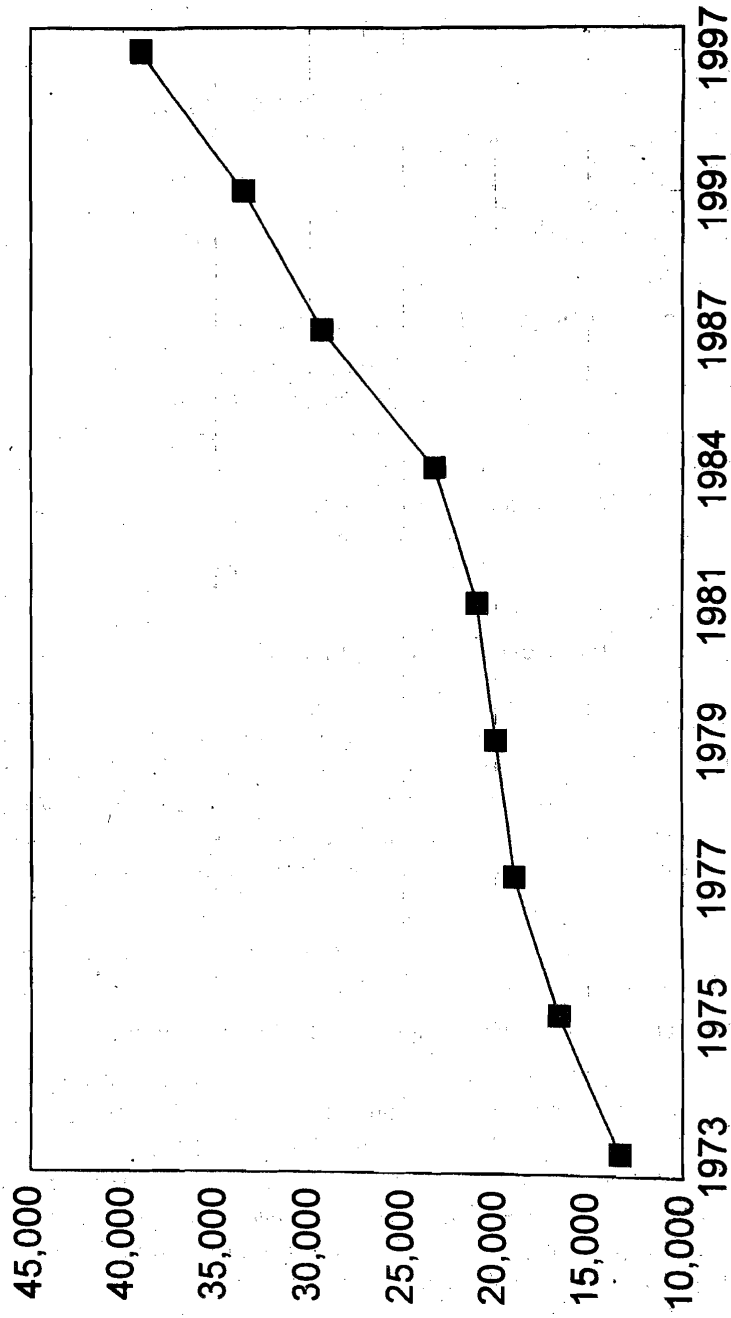
Number of Government Employees by Mother tongue :

Amongst the main indigenous communities of the State, the number of Khasi-Jaintia Community registers an increase of 21.45 per cent over a period from 1991 to 1997. During the same period the Garo Community had an increase of 18.41 per cent. The Census of Government Employees - 1997 indicates that the employees speaking Khasi was 45.76 per cent as against 6.35 per cent of those speaking Jaintia only. The percentage of employees speaking Garo was 25.77 per cent whereas those under category 'Others' accounted for 19.19 per cent.

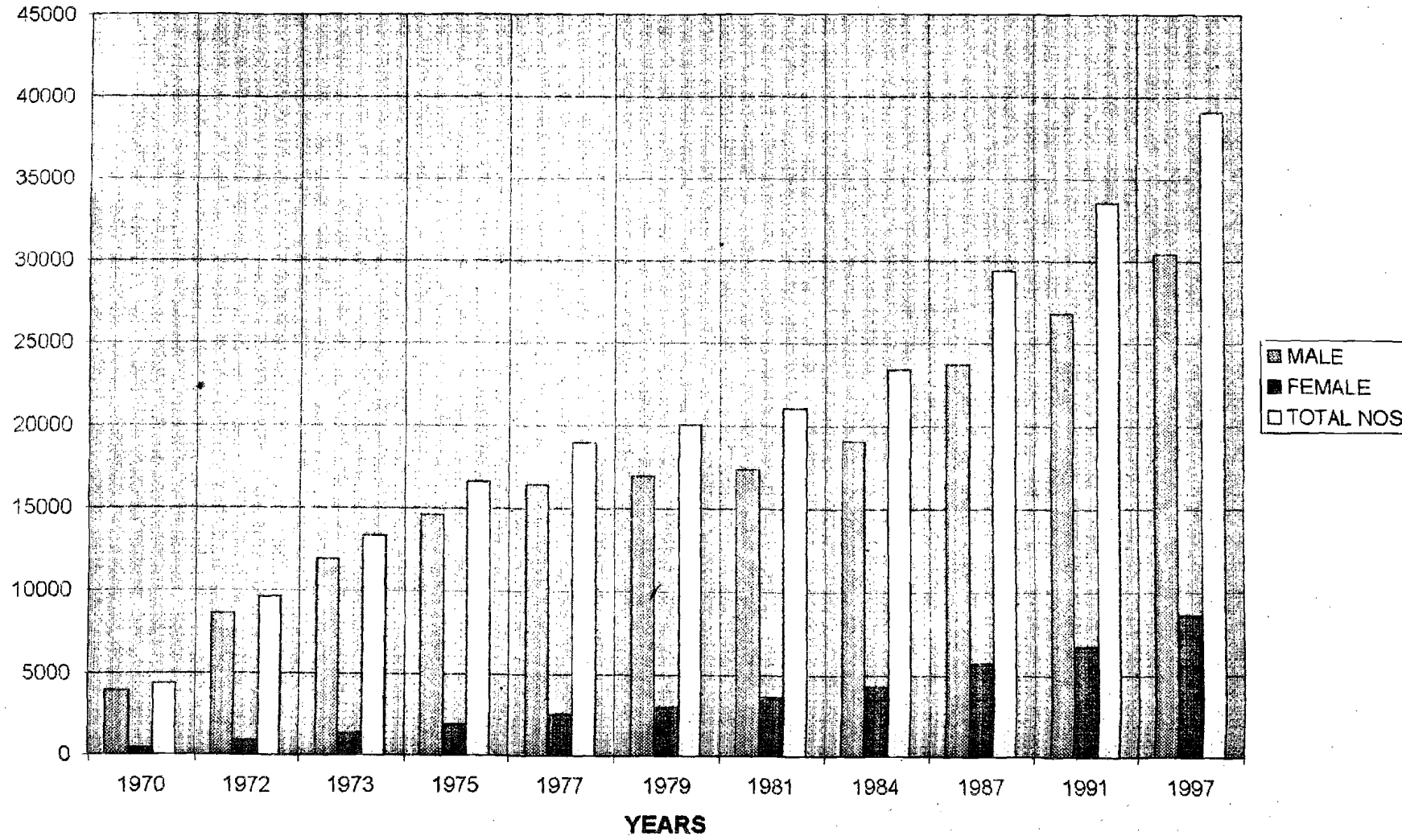
Government Employees by Caste/Tribe :

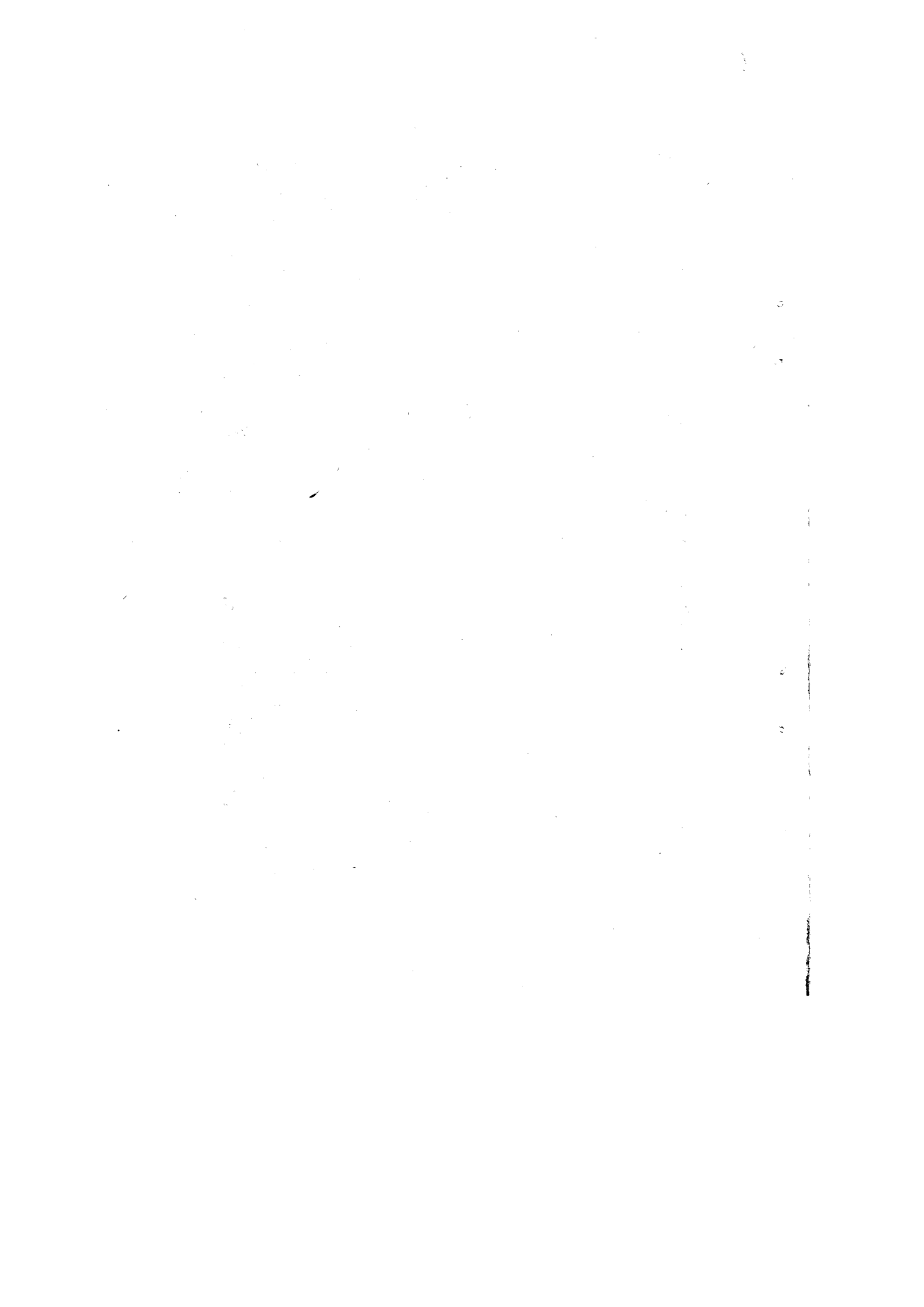
81.14 per cent or 31,663 of the total State Government Employees belongs to Scheduled Tribe Category and 12.58 per cent or 4911 were the total number of the employees under General Category, that is, other than the Scheduled Castes/Tribes and other backward classes. In 1972 when Meghalaya came into being, there were 241 Scheduled Tribe Officers under Gazetted Category and during a period of twenty-five years the Scheduled Tribe Officers went up to 1584 in 1997. The Scheduled Caste employees recorded a decline during the years and the percentage of decrease in 1997 over 1991 was 29.29 per cent.

Trends in Meghalaya Government Employees

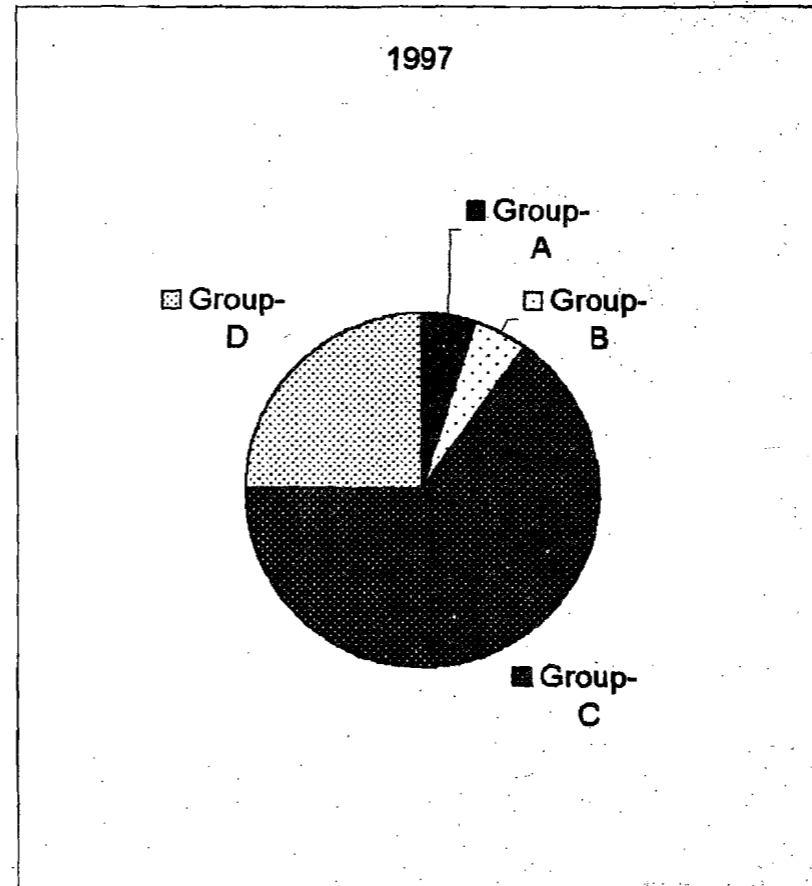
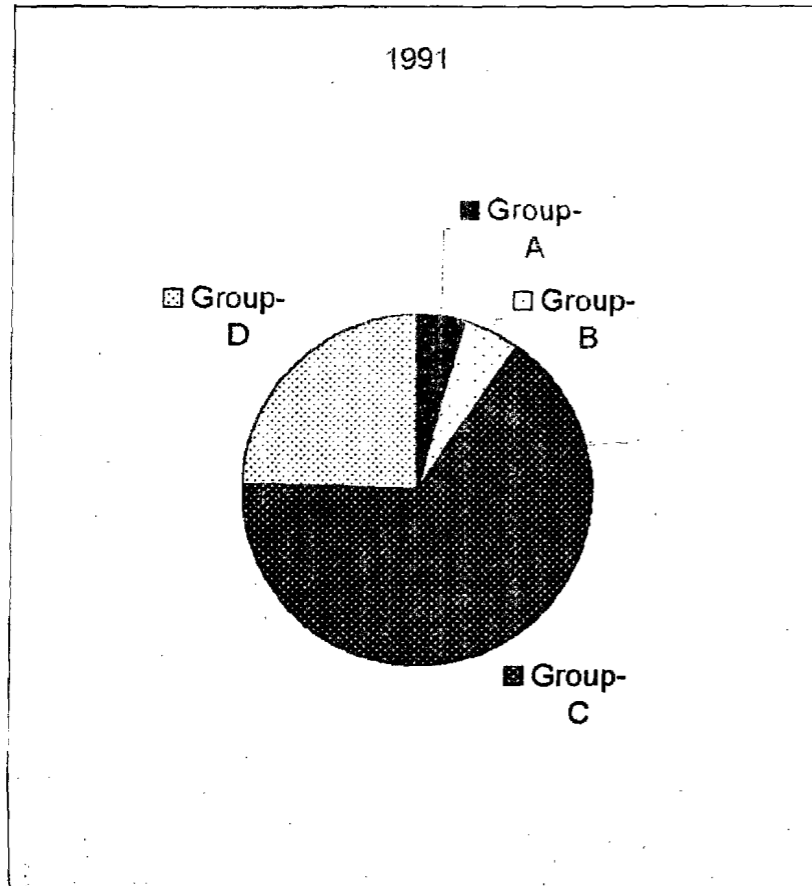


TRENDS IN MEGHALAYA GOVERNMENT EMPLOYEES BY SEX



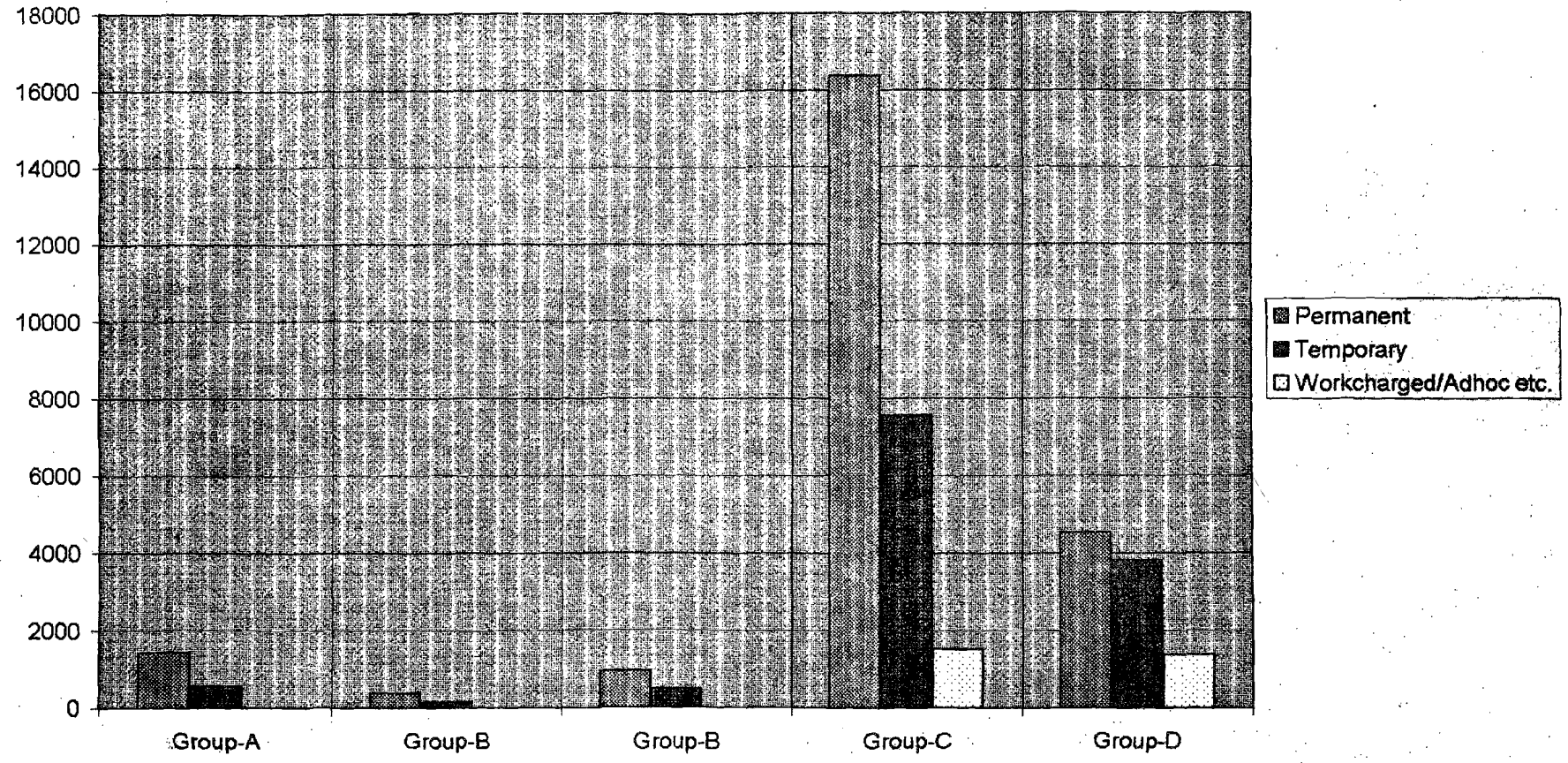


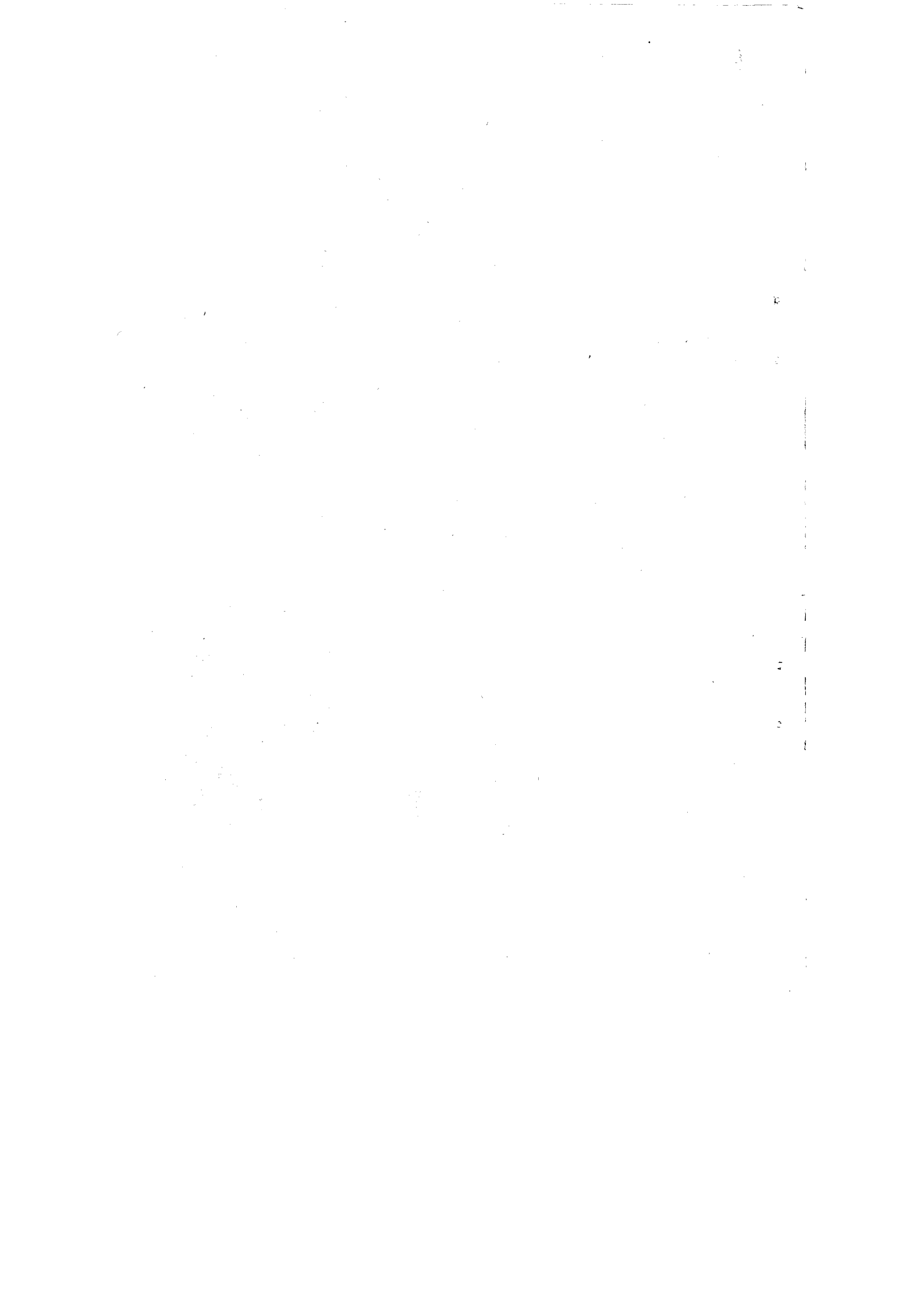
**Distribution of Meghalaya Government Employees by
Classification of Service 1991 and 1997**



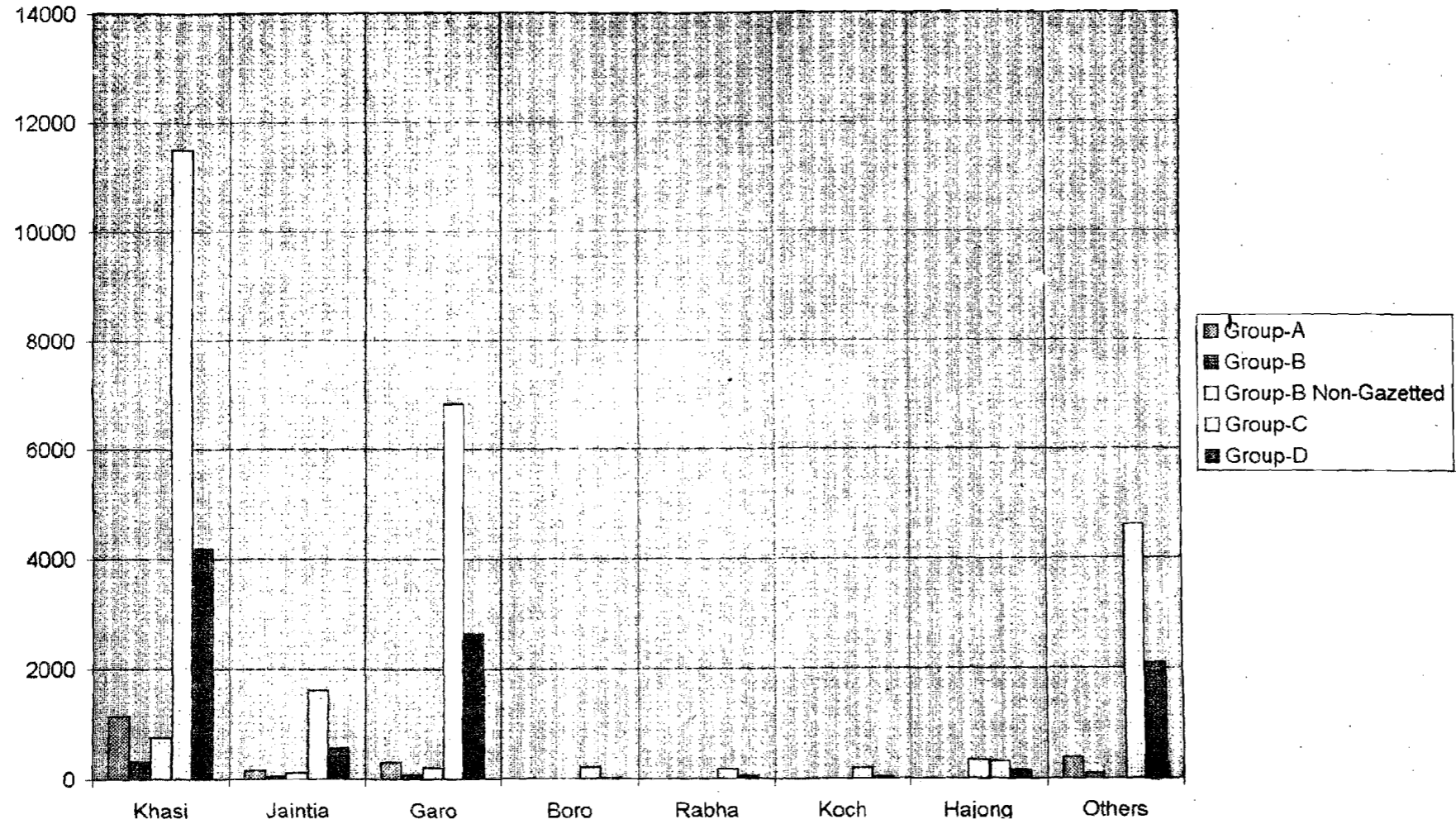


**NO. OF MEGHALAYA GOVERNMENT EMPLOYEES ACCORDING
TO STATUS AND TENURE OF SERVICE
AS ON 31ST MARCH 1997**





DISTRIBUTION OF GOVERNMENT EMPLOYEES BY MOTHER TONGUE: GROUP-WISE



—

1

2

3

4

5

6

7

8

9

10

TABLE - 1
AT A GLANCE

CENSUS OF MEGHALAYA GOVERNMENT EMPLOYEES AS ON 31ST MARCH, 1997.

Sl. No.	PARTICULARS	GAZETTED		NON-GAZETTED			TOTAL 1997	TOTAL 1991	DIFFERENCES	Percentage of Increase (+) Decrease (-)
		Group-A	Group-B	Group-B	Group-C	Group-D				
1	2	3	4	5	6	7	8	9	10	11
	TOTAL NUMBER OF EMPLOYEES	1978	515	1426	25414	9690	39023	33517	+ 5506	+ 16.43
1.	BY TRIBES :-									
	(a) Schedule Tribes (ST)	1584	431	1100	20915	7633	31663 (81.14)	26525 (79.14)	+ 5138	+ 19.37
	(b) Schedule Castes (SC)	22	10	31	374	157	594 (1.52)	840 (2.51)	- 246	- 29.29
	(c) Other Backward Classes (OBC)	73	4	36	918	824	1855 (4.75)	878 (2.62)	+ 977	+ 111.28
	(d) Others General (O)	299	70	259	3207	1076	4911 (12.59)	5274 (15.73)	- 363	- 6.88
2.	Regular Employees :-									
	(a) Permanent	1430	376	928	16353	4523	23610 (60.50)	18050 (53.85)	+ 5560	+ 30.80
	(b) Temporary	543	139	488	7539	3799	12508 (32.05)	15467 (*) (45.15)	- 54	- 0.35
3.	Non-regular employees :									
	(a) Adhoc	5	-	-	262	292	559 (1.44)			
	(b) Work Charged	-	-	10	1260	1076	2346 (6.01)			
4.	Women Employees	556	116	263	6264	1420	8619 (22.09)	6700 (19.99)	+ 1919	+ 28.64

(*) INCLUDES ADHOC AND WORK CHARGED.

Figures in bracket indicate the Percentage of the Total

TABLE - 2

TRENDS IN MEGHALAYA GOVERNMENT EMPLOYEES

Year	Number of Employees	Growth over previous Census & Percentage		Index of Employee (Base - 1970 = 100)
1	2	3		4
1970	4395	-	-	100
1972	9585	5190	118.09	218
1973	13306	3881	38.82	303
1975	16556	3250	24.42	377
1977	18973	2417	14.59	432
1979	20005	1032	5.44	455
1981	21026	1021	5.10	478
1984	23351	2325	11.06	531
1987	29380	6029	25.82	(688) 668
1991	33517	4137	14.08	(763) 762
1997 ✓	39023	5506	16.43	(888) 884

TABLE - 3

TRENDS IN MEGHALAYA GOVERNMENT EMPLOYEES BY SEX

Year as on 31st March.	MALE		FEMALE		TOTAL	No. of Female per 1000 male
	Nos.	Percentage	Nos.	Percentage	Nos.	
1	2	3	4	5	6	7
1970	3975	90.44	420	9.56	4395	106
1972	8604	89.77	981	10.23	9585	114
1973	11913	89.53	1393	10.49	13306	117
1975	14577	88.05	1979	11.95	16556	136
1977	16404	86.46	2569	13.54	18973	157
1979	16949	84.72	3056	15.28	20005	180
1981	17363	82.58	3663	17.42	21026	211
1984	19060	81.62	4291	18.38	23351	225
1987	23680	80.60	5700	19.40	29380	241
1991	26817	80.01	6700	19.99	33517	250
1997	30404	77.91	8619	22.09	39023	283

TABLE - 4

DISTRIBUTION OF MEGHALAYA GOVERNMENT EMPLOYEES BY
CLASSIFICATION OF SERVICE 1991 AND 1997

Group of Post	(1991) 31-3-91		(1997) 31-3-97		Increase (+)	Decrease (-)
	Number	Percentage	Number	Percentage	Number	Percentage
1	2	3	4	5	6	7
Group - A	1482	4.42	1978	5.07	+ 496	+ 33.47
Group - B	1782	5.32	1941	4.97	+ 159	+ 8.92
Group - C	22029	65.72	25414	65.13	+3385	+ 15.38
Group - D	8224	24.54	9690	24.83	+ 1466	+ 17.83
TOTAL :-	33517	100.00	39023	100.00	+ 5506	+ 16.43

TABLE - 5

NUMBER OF MEGHALAYA GOVERNMENT EMPLOYEES
GAZETTED AND NON-GAZETTED 1991 - 1997

Category of Employees	Number of Employees		Increase (+)	Decrease (-)
	31-3-91	31-3-97	Number	Percentage
1	2	3	4	5
1 GAZETTED :				
GROUP - A	1482	1978	+ 496	+ 33.47
GROUP - B	535	515	- 20	- 3.74
2. (a) NON-GAZETTED :				
GROUP - B	1247	1426	+ 179	+ 14.35
GROUP - C	22029	25414	+ 3389	+ 15.38
(b) GRADE - IV :				
GROUP - D	8224	9690	+ 1466	+ 17.83
TOTAL :-	33517	39023	+ 5506	+ 16.43

TABLE - 6

**DISTRIBUTION OF STATE GOVERNMENT EMPLOYEES BY CASTES / TRIBES :
GROUP-WISE, 1991 & 1997.**

Sl. No.	PARTICULARS	GROUP - A	GROUP - B	GROUP - C	GROUP - D	TOTAL		Increase (+)	Decrease (-)
		1997	1997	1997	1997	1991	1997	Percentage	Percentage
1	2	3	4	5	6	7	8	9	9
1.	Scheduled Castes (SC)	22	41	374	157	840	594	-	29.29
2.	Scheduled Tribes (ST)	1584	1531	20915	7633	26525	31663	+	19.37
3.	Other Backward Classes - (OBC)	73	40	918	824	878	1855	+	111.28
4.	Others (O)	299	329	3207	1076	5274	4911	-	6.88
	TOTAL :-	1978	1941	25414	9690	33517	39023	+	16.43

TABLE - 7

**DISTRICT-WISE BREAK-UP OF MEGHALAYA GOVERNMENT EMPLOYEES BY GROUP
AS ON 31st MARCH, 1991 AND 1997.**

NAME OF DISTRICT	GROUP - A	GROUP - B GAZETTED	GROUP - B Non-Gazetted	GROUP - C	GROUP - D	TOTAL		
	1997	1997	1997	1997	1997	1991	1997	Percentage of (+) increase (-) decrease
1	2	3	4	5	6	7	8	9
01. JAINTIA HILLS	239	41 = 280	163	3212 = 3375	1169	3737	4824 (+)	29.09
02. EAST KHASI HILLS	1022	287 = 1309	750	12198 = 12948	4314	X18512	18571 (+)	11.33X
03. WEST KHASI HILLS	142	39 = 181	101	1922 = 2023	824	2341	3028 (+)	29.35
04. EAST GARO HILLS	105	21 = 126	105	1631 = 1736	755	2372	2617 (+)	10.33
05. WEST GARO HILLS	310	75 = 385	197	4483 = 4680	1741	XX6555	6806 (+)	21.19XX
06. RI-BHOI DISTRICT	106	37 = 143	64	1270 = 1334	562		2039	-
07. SOUTH GARO HILLS	54	15 = 69	46	698 = 744	325		1138	-
TOTAL :-	1978	515	1426	25414	9690	33517	39023 (+)	16.43

X Including Ri-Bhoi District.
XX Including South Garo Hills.

TABLE - 8

**PERCENTAGE DISTRIBUTION OF MEGHALAYA GOVERNMENT EMPLOYEES ACCORDING TO
PLACE OF POSTING, GROUP-WISE AS ON 31st MARCH, 1997.**

Place of Posting	GROUP - A		GROUP - B		GROUP - C		GROUP - D		TOTAL	
	Nos	Percentage	Nos	Percentage	Nos	Percentage	Nos	Percentage	Nos	Percentage
7	2	3	4	5	6	7	8	9	10	11
RURAL	= 725	1.86	567	1.45	9137	23.42	3505	8.98	13934	35.71
URBAN	= 1253	3.21	1374	3.52	16277	41.71	6185	15.85	25089	64.29
TOTAL	= 1978	5.07	1941	4.97	25414	65.13	9690	24.83	39023	100.00

TABLE - 9

**DISTRICT-WISE BREAK-UP OF MEGHALAYA GOVERNMENT EMPLOYEES ACCORDING TO
THE PLACE OF POSTING, GROUP-WISE AS ON 31st MARCH, 1997.**

Name of the District.	RURAL				URBAN				TOTAL			
	GR-A	GR-B	GR-C	GR-D	GR-A	GR-B	GR-C	GR-D	GR-A	GR-B	GR-C	GR-D
1	2	3	4	5	6	7	8	9	10	11	12	13
Jaintia Hills	97	89	1505	323	142	115	1707	846	239	204	3212	1169
East Khasi Hills	335	181	3177	1159	687	856	9021	3155	1022	1037	12198	4314
West Khasi Hills	75	64	759	356	67	76	1163	468	142	140	1922	824
East Garo Hills	47	46	832	432	58	80	799	323	105	126	1631	755
West Garo Hills	121	115	2129	828	189	157	2354	913	310	272	4483	1741
Ri-Bhoi	37	48	507	264	69	53	763	298	106	101	1270	562
South Garo Hills	13	24	228	143	41	37	470	182	54	61	698	325
Total =	725	567	9137	3505	1253	1374	16277	6185	1978	1941	25414	9690

TABLE - 10

**DISTRIBUTION OF MEGHALAYA GOVERNMENT EMPLOYEES ACCORDING TO
NATURE OF WORK AS ON 31st MARCH, 1997.**

Place Of Posting	GROUP - A				GROUP - B				GROUP - C				GROUP - D				TOTAL (Group A + B + C + D)					
	Adminis- trative	Minis- terial	Tech- nical/ Profess- ional	Others	Total	Adminis- trative	Minis- terial	Tech- nical/ Profess- ional	Others	Total	Adminis- trative	Minis- terial	Tech- nical/ Profess- ional	Others	Total	Adminis- trative	Minis- terial	Tech- nical/ Profess- ional	Others	Grade - IV (GR-D)	Grand Total	
																						Grade - IV
1	2	3	4	5	6	7	8	9	10	11	12	13	14	15	16	17	18	19	20	21	22	23
RURAL	85	38	600	2	725	96	21	449	1	567	233	1184	5294	2426	9137	3505	414	1243	6343	2429	3505	13934
URBAN	431	93	725	4	1253	268	206	895	5	1374	328	5099	5673	4677	16277	6185	1527	5398	7293	4686	6185	25089
TOTAL =	516	131	1325	6	1978	364	227	1344	6	1941	1061	6283	10967	7103	25414	9690	1941	6641	13636	7115	9690	39023

NOTE :- Others = Includes constables, Sepoys, Forest Guards, Jail Wardens etc.

TABLE - 11

NUMBER OF STATE GOVERNMENT EMPLOYEES DEPARTMENT-WISE
ACCORDING TO STATUS AS ON 31st MARCH, 1997

Sl. No.	Department	GAZETTED		NON-GAZETTED			TOTAL
		Group - A	Group - B	Group - B	Group - C	Group - D	
1	2	3	4	5	6	7	8
1.	Accounts.	15	2	2	167	61	247
2.	Agriculture.	310	14	85	1023	718	2150
3.	Animal Husbandry and Veterinary.	148	8	9	653	589	1407
4.	Assembly Secretariat.	20	10	2	95	104	231
5.	Boiler Inspectorate.	2	-	1	6	2	11
6.	Border Area Development.	-	13	-	41	44	98
7.	Civil Defence and Home Guards.	5	5	23	999	114	1146
8.	Civil Task Force.	-	-	-	10	5	15
9.	Community and Rural Development.	14	2	43	851	120	1030
10.	Economics and Statistics.	12	11	24	139	37	223
11.	Co-operation.	7	11	27	116	40	201
12.	Education INCLD NCC Art & Culture.	242	26	168	1886	715	3037
13.	Election.	-	1	-	103	36	140
14.	Electrical Inspectorate.	2	1	1	13	9	26
15.	Employment.	6	12	3	162	75	258
16.	Prog. Implementation.	8	2	5	9	5	29
17.	Excise.	2	6	22	207	20	257
18.	Fisheries.	10	18	10	157	143	338
19.	Forests.	40	12	68	973	346	1439
20.	Finance.	5	11	-	2	-	18
21.	G. A. D. INCLD. DC's Office, Meghalaya House.	4	1	12	523	552	1092
22.	Geology & Mining	18	15	4	130	96	263
23.	Governor's Secretariat.	6	2	1	28	54	91
24.	Health.	296	20	32	2316	1635	4299
25.	Housing.	2	13	9	67	36	127
26.	Industries.	28	4	5	247	136	420
27.	Information & Public Relations.	1	15	4	97	54	171

1	2	3	4	5	6	7	8
28.	Jail.	3	3	6	191	49	252
29.	Judicial INCLD. High Court.	5	-	-	67	63	135
30.	Labour.	4	8	1	40	27	80
31.	Land Records & Survey.	2	1	1	113	219	336
32.	Lottery.	-	-	1	13	10	24
33.	Printing & Stationery.	3	2	14	354	54	427
34.	Police.	70	10	163	7290	328	7853
35.	Public Health Engineering.	81	20	143	896	585	1725
36.	Public Service Commission.	-	4	1	37	18	60
37.	Public Works Department.	230	36	344	2304	999	3913
38.	Planning.	7	2	15	20	17	61
39.	Registration.	-	-	-	19	5	24
40.	Secretariat.	219	62	32	672	436	1421
41.	Sericulture and Weaving.	6	18	10	504	278	816
42.	Small Saving.	-	-	1	3	2	6
43.	Social Welfare.	43	2	4	310	101	460
44.	Supply & Trade.	9	18	6	185	54	272
45.	Soil Conservation.	60	6	54	860	343	1323
46.	Taxation.	2	60	13	106	111	292
47.	Tourism.	1	4	-	25	34	64
48.	Transport.	2	9	2	140	59	212
49.	Urban Affairs.	20	7	22	62	36	147
50.	Weights & Measures.	3	1	8	48	25	85
51.	Youth & Sports.	2	5	2	49	34	92
52.	Meghalaya Adm. Training Institute.	1	-	1	9	10	21
53.	Examiner Local Actt.	2	10	22	77	47	158
GRAND TOTAL :-		1978	515	1426	25414	9690	39,023

TABLE - 12

**DISTRIBUTION OF MEGHALAYA GOVERNMENT EMPLOYEES
ACCORDING TO STATUS DISTRICT-WISE AS ON 31st MARCH, 1997**

District	Group - A	Group - B	Group - B	Group - C	Group - D	Total of all groups	Percentage to Grand TOTAL
1	2	3	4	5	6	7	8
01. Jaintia Hills.	239	41	163	3212	1169	4824	12.36
02. East Khasi Hills	1022	287	750	12198	4314	18571	47.59
03. West Khasi Hills.	142	39	101	1922	824	3028	7.76
04. East Garo Hills.	105	21	105	1631	755	2617	6.71
05. West Garo Hills.	310	75	197	4483	1741	6806	17.44
06. Ri-Bhoi.	106	37	64	1270	562	2039	5.22
07. South Garo Hills.	54	15	46	698	325	1138	2.92
Grand Total :-	1978	515	1426	25414	9690	39023	100.00

TABLE - 13

**NUMBER OF MEGHALAYA GOVERNMENT EMPLOYEES ACCORDING TO
STATUS AND TENURE OF SERVICE AS ON 31st MARCH, 1997**

STATUS	Permanent	Temporary	Work charged/ Adhoc etc.	TOTAL	Percentage to Total
1	2	3	4	5	6
Group - A	1430	543	5	1978	5.07
Group - B	376	139	-	515	1.32
Group - B	928	488	10	1426	3.65
Group - C	16353	7539	1522	25414	65.13
Group - D	4523	3799	1368	9690	24.83
TOTAL	23610	12508	2905	39023	100.00

TABLE - 14

**DISTRICT-WISE BREAK-UP OF MEGHALAYA GOVERNMENT EMPLOYEES ACCORDING TO
SEX AND GROUP AS ON 31st MARCH, 1997.**

DISTRICT	G A Z E T T E D						N O N - G A Z E T T E D						T O T A L		
	G R O U P - A		G R O U P - B		G R O U P - B		G R O U P - C		G R O U P - C		G R O U P - D		Male	Female	Total Male & Female
	Male	Female	Male	Female	Male	Female	Male	Female	Male	Female	Male	Female			
1	2	3	4	5	6	7	8	9	10	11	12	13	14		
1. Jaintia Hills	163	76	37	4	141	22	1897	1315	859	310	3097	1727	4824		
2. East Khasi Hills	721	301	190	97	553	197	9125	3073	3499	815	14088	4483	18571		
3. West Khasi Hills	115	27	38	1	97	4	1444	478	732	92	2426	602	3028		
4. East Garo Hills	82	23	20	1	102	3	1287	344	727	28	2218	399	2617		
5. West Garo Hills	216	94	66	9	164	33	3798	685	1633	108	5877	929	6806		
6. Ri-Bhoi	77	29	34	3	60	4	1024	246	503	59	1698	341	2039		
7. South Garo Hills	48	6	14	1	46	-	575	123	317	8	1000	138	1138		
8. GRAND TOTAL :-	1422	556	399	116	1163	263	19150	6264	8270	1420	30404	8619	39023		
	1978		515		1426		25414		9690		39023				

TABLE - 15

DISTRIBUTION OF MEGHALAYA GOVERNMENT EMPLOYEES ACCORDING TO MOTHER TONGUE AND GROUP-WISE AS ON 31st MARCH, 1997

Community Mother Tongue	Group - A	Group - B	Group - B Non Gazetted	Group - C	Group - D	TOTAL
1	2	3	4	5	6	7
KHASI	1132	308	745	11494	4176	17855
JAINTIA	159	40	112	1607	561	2479
GARO	294	82	211	6825	2645	10057
BORO	2	1	2	208	14	227
RABHA	2	1	5	174	45	227
KOCH	-	-	5	185	35	225
HAJONG	4	2	6	315	136	463
OTHERS	385	81	340	4606	2078	7490
TOTAL :-	1978	515	1426	25414	9690	39023

TABLE - 16

DISTRIBUTION OF MEGHALAYA GOVERNMENT EMPLOYEES ACCORDING
TO EDUCATIONAL QUALIFICATION AS ON 31st MARCH, 1997

EDUCATIONAL QUALIFICATIONS	Group - A	Group - B	Group - B Non Gazetted	Group - C	Group - D	TOTAL
1	2	3	4	5	6	7
Below Matric	1	2	85	10927	9123	20138
Matriculate	3	12	199	7807	453	8474
P. U./Intermediate	40	29	166	3325	78	3638
Degree in Arts/ Science/Commerce	462	354	512	2469	36	3833
Diploma in Engineering	80	27	324	170	-	601
Diploma in Agri./Sericulture/ Vety./Phar./Tex, etc.	16	9	32	262	-	319
Degree in Engineering	320	7	7	12	-	346
Degree in Agriculture	206	5	1	-	-	212
Degree in Medical	282	13	3	-	-	298
Degree in Veterinary	123	10	4	2	-	139
P. G. in Arts/Science/ Commerce	320	44	81	89	-	534
P. G. in Engineering	23	-	1	8	-	32
P. G. in Agriculture	11	-	-	-	-	11
P. G. in Medical	52	-	-	-	-	52
P G. in Veterinary	12	-	-	-	-	12
D. Phil/D. Litt./ Ph.D.	8	1	5	2	-	16
TOTAL :-	1959	513	1420	25073	9690	38655
Educational Qualification not stated	19	2	6	341	-	368
ALL TOTAL :-	1978	515	1426	25414	9690	39023



