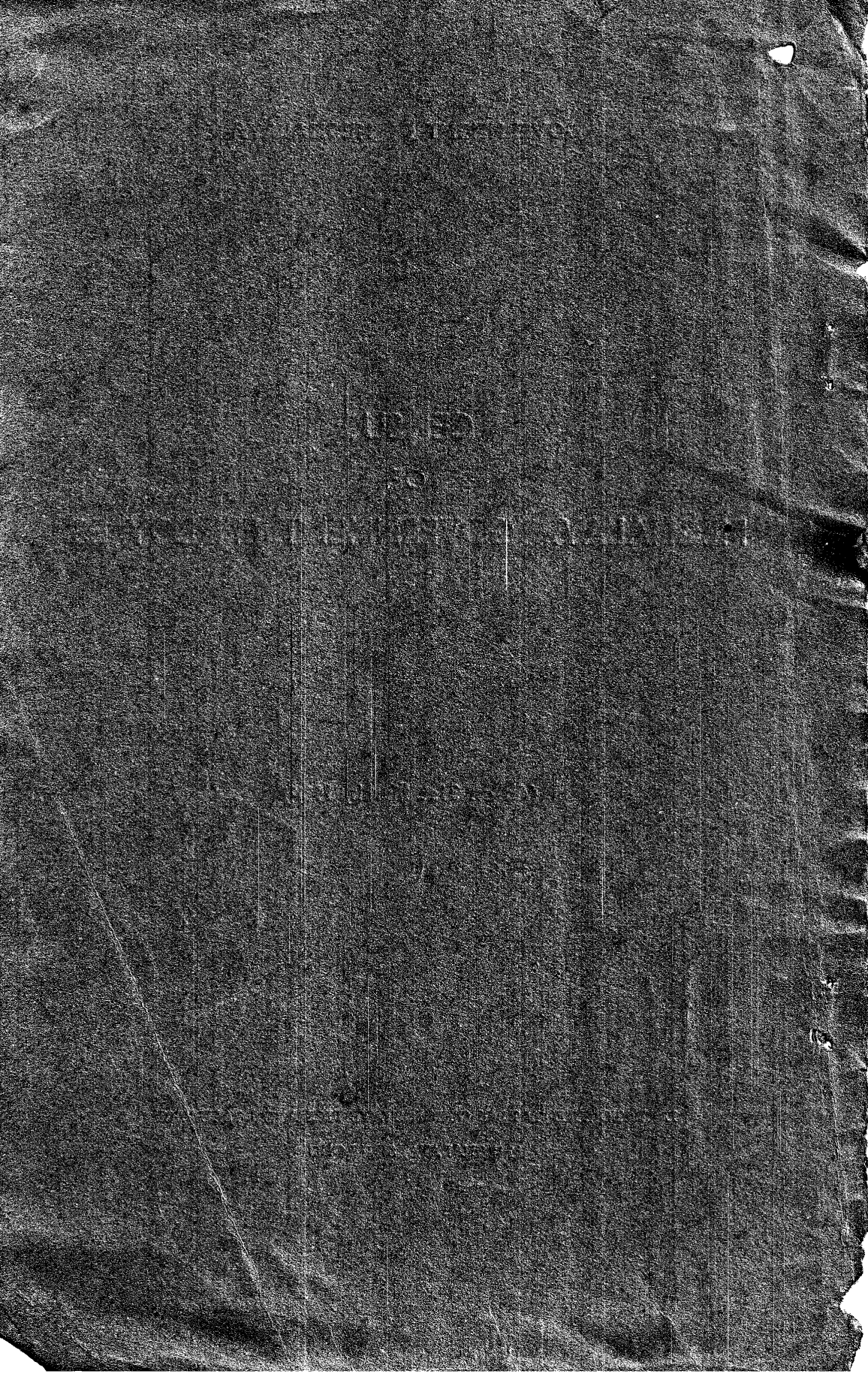


GOVERNMENT OF MEGHALAYA

CENSUS
OF
MEGHALAYA GOVERNMENT EMPLOYEES

(As on 31st March, 1984)

DIRECTORATE OF ECONOMICS, STATISTICS AND EVALUATION
MEGHALAYA, SHILLONG



P R E F A C E

The present issue of the Census of Government Employees 1984, is the Seventh in the Series being brought out by the Directorate of Economics, Statistics and Evaluation, Meghalaya. The main object of this report is to provide data on the number of Meghalaya State Government Employees as also an analysis by various characteristics such as pay range, tenure of service, sex, status, representation of Caste/Tribes etc in the employment under the State Government. The release of the report has been delayed considerably due to late receipt of relevant information from the departments concerned.

The Directorate of Economics, Statistics and Evaluation places on record its appreciation of the co-operation received from various offices in submitting the returns of the census and sincerely hopes that it will continue to receive co-operation in course of subsequent censuses also.

Comments and suggestions to make this publications more useful in future are most welcome.

Dated Shillong,
February, 1989.

D.N.Das
Director

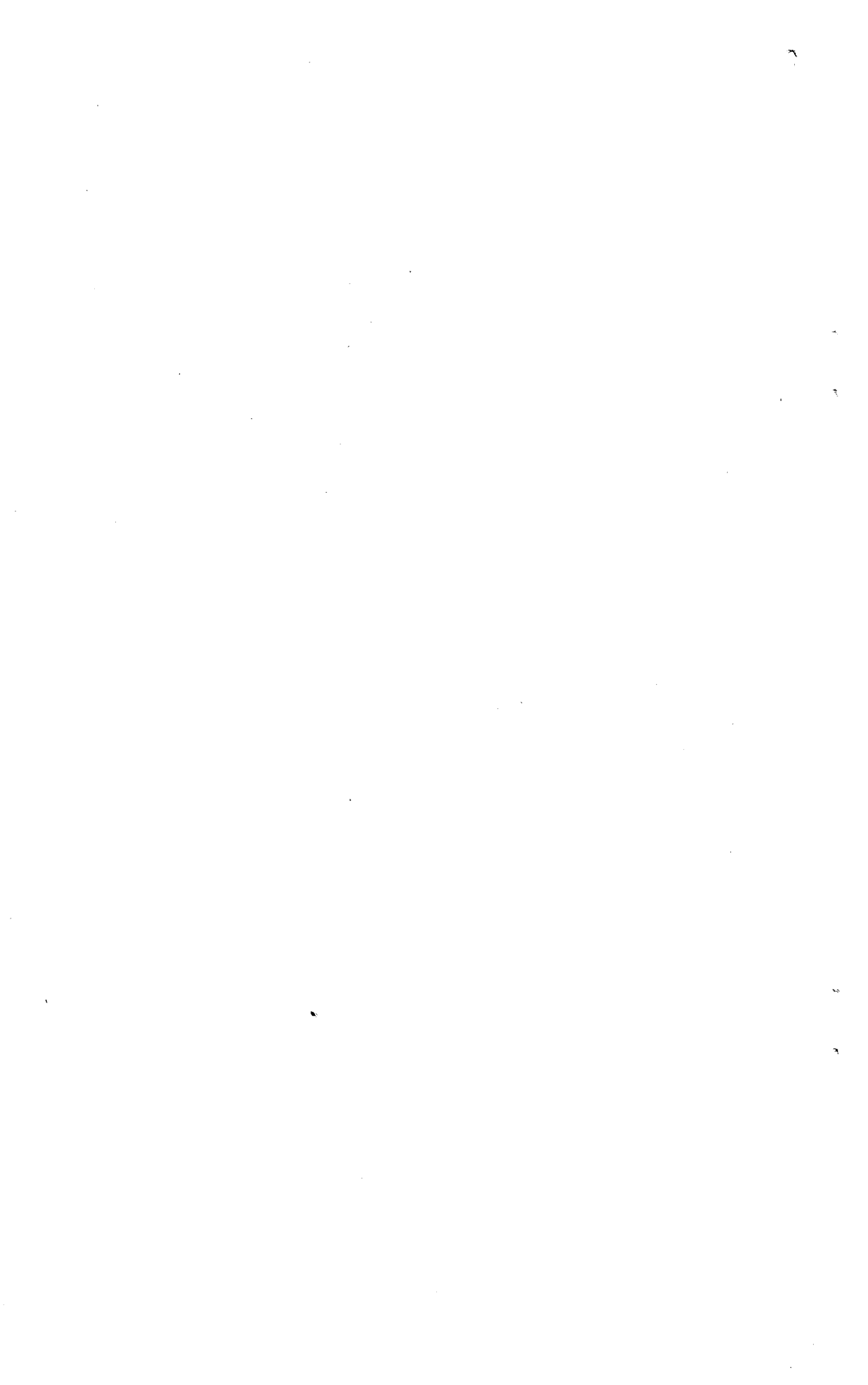


CENSUS OF MEGHALAYA GOVERNMENT
EMPLOYEES

(As on 31st March, 1984)

C O N T E N T S

1. Introduction.	Pages
2. Main Findings of the Census	4
3. The Results of the Census	7
4. Appendix	15
(i) Detail tables	Appendix 'A'
(ii) List of Scheduled castes Tribes and <u>other Backward</u> <u>classes adopted for the</u> census.	Appendix 'B'



CENSUS OF MEHALAYA GOVERNMENT EMPLOYEES
(AS ON 31ST MARCH, 1984)

....

1. INTRODUCTION :

The Census of Meghalaya Government Employees was first conducted in the year 1972 with 31st March as the reference date. The Census was conducted for the two consecutive years i.e. 1972 and 1973 and thereafter it was decided to conduct the census once in two years. The present report, which is the seventh in the series, covers state Government employees as on 31st March, 1984. The main object of the Census is to provide a count of the total number of State Government Employees classified by pay range, tenure of services, sex, status, Caste|Tribe, educational level and mother tongue etc.

1.1 The data for the Census were asked for from all State Government establishments by means of a circular requesting all State Government offices to furnish the required information in the prescribed form, along with the instruction within a specified date. The District Statistical Offices coordinated with various offices in the matter of preparation and submission of survey returns. Completed returns were received from about 95 per cent of the State Government establishments.

1.2 The Census covered all employees holding posts under the State Government whether on permanent, temporary, or on deputation from other States and the Central Government and those on workcharge or contract basis. The casual employees under the State Government for whom service-roll was maintained were also treated as Government employees for the purpose of the Census. The local bodies, Public Sector undertakings and Autonomous bodies were outside the scope of this Census.

1.3 In spite of best efforts on the part of the Directorate, the compilation and publication of the Census report has been considerably delayed due to non-receipt of returns in time from the Government Offices in spite of repeated reminders and personal contact. Till the writing of this report, the Directorate could receive returns from 482 offices out of a total list of 507 offices, giving coverage of 95.06 percent in terms of number of establishments.

The following offices did not submit returns in spite of repeated reminders from different levels.

1. West Garo Hills District :

- (1) Executive Engineer, P.W.D. (R&B), Baghmara Division.
- (2) Deputy Inspector of School, Baghmara.

2. East Garo Hills District :

- (1) Assistant Conservator of Forests, Williamnagar.
- (2) Superintendent of Industries, Williamnagar.
- (3) Executive Engineer (P.H.E.), Rural Water Supply Division, Williamnagar.
- (4) Handloom Development Officer, Dilma.

3. West Khasi Hills District :

- (1) Headmaster, Government Middle English School, Mairang.

4. Jaintia Hills District :

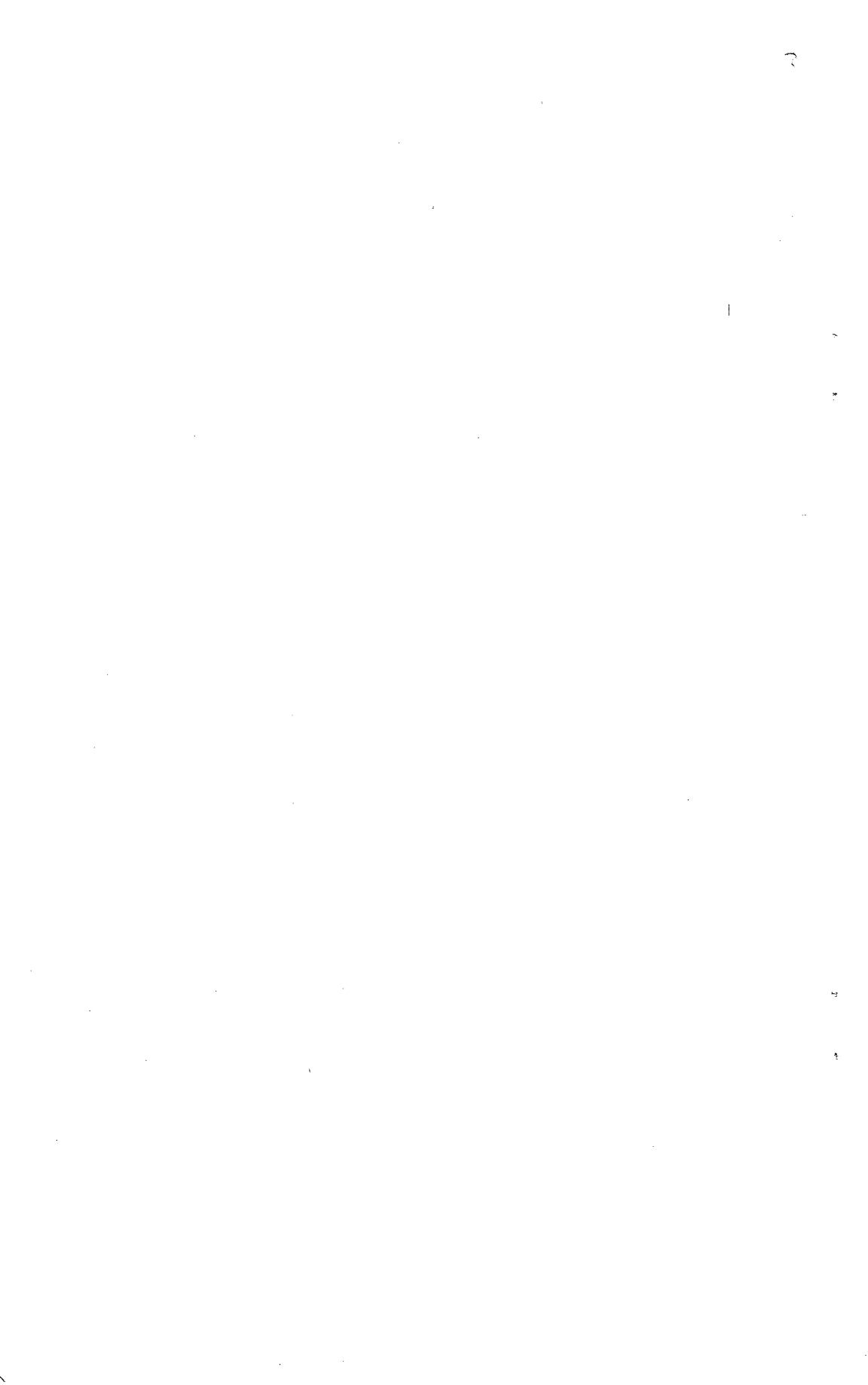
- (1) Manager, Sheep and Goat Farms, Saitsohma.
- (2) Sub-Divisional Officer (Judicial), Jaintia Border Division, Amlarem.
- (3) Border Area Development Officer, Umkiang.
- (4) Sub-divisional Officer, Health Engineering Wing, Jowai.
- (5) Sub-divisional Officer (Civil), Khliehriat.
- (6) Assistant Director of Weaving, In-charge Weaving Superintendent, Jowai.

5. East Khasi Hills District :

- (1) Vegetable Development Officer, Shillong.
- (2) District Agriculture Officer, Shillong.
- (3) Ginger Development Officer, Ginger Development Station, Umsnig.
- (4) Livestock, Census Officer, Shillong.
- (5) Sub-divisional Officer, Animal Husbandry and Veterinary, Nongpoh.
- (6) Director of Public Instruction, Shillong.
- (7) Governor's Secretariat, Shillong.
- (8) Executive Engineer, Health Engineering Wing, Shillong.
- (9) Superintendent, District Jail, Shillong.
- (10) Executive Engineer, P.W.D. (R&B), Central Division, Shillong.
- (11) District Transport Officer, Shillong.
- (12) Director of Social Welfare, Meghalaya, Shillong.

1.4 Out of the above 25 defaulting offices, 20 offices submitted their returns in the earlier i.e 1981 census and as per these returns, the number of employees in these offices was 1098. The rest of the offices did not furnish their returns in 1981 also.

1.5 The information presented in the subsequent chapter of this report relates to data furnished by 482 reporting offices only. 25 defaulting offices have been excluded.



Census of Meghalaya Government Employees
(As on 31st March, 1984)

.....

2. MAIN FINDINGS OF THE CENSUS :

2.1 The total number of Meghalaya Government Employees as on 31st March, 1984 was 23,351 as against 21,026 in 1981. This shows an increase of 11.06 per cent in three years. The strength of Meghalaya Government Employees when the State came into being on 2nd April, 1970 was 4395. Over this period the number of Meghalaya Government Employees had increased by 431.30 per cent.

2.2 Of the total number of 23,351 Employees as on 31st March, 1984 the Female Employees numbered 4291 and Male Employees 19060 constituting 18.38 per cent and 81.62 per cent respectively.

2.3 9174 or 39.29 per cent of the Employees were permanent while 14177 or 60.71 per cent Employees were temporary.

2.4 Of the total number of Employees, 1587 (6.79 P.C.) were gazetted, 15021 (64.33 p.c.) Non-Gazetted and 6743 (28.88 p.c.) were Grade IV Employees (including the Staff borne on identical scale of pay).

2.5 Out of the total of 23351 Employees, 21,707 (92.96 p.c.) of Employees were by absorption or direct appointment by the Meghalaya Government, 1644 (7.04 p.c.) were on deputation from other Governments. The number of Employees appointed directly by the Meghalaya Government was 210 only in 1970.

2.6 The Police Department employed the highest number totalling 3826 employees as on 31st March, 1984, which constitutes 16.38 per cent of the total number of Employees of Meghalaya Government. At the other extreme was the Directorate of Small Savings with just 5 employees.

2.7 1338 Meghalaya Government Employees or 5.73 per cent were in the Secretariat, 2012 or 8.62 per cent in the Heads of Departments while 20001 or

85.65 per cent were in other offices of the State Government.

2.8 The East Khasi Hills District had the largest number of Meghalaya Government Employees totalling 11630 or 49.81 per cent of the total number of Meghalaya Government Employees as on 31st March, 1984. Next came the West Garo Hills District with 5710 or 24.45 per cent and Jaintia Hills District with 2735 or 11.71 per cent Employees. The share of the West Khasi Hills District and East Garo Hills District were only 1681 or 7.20 per cent and 1595 or 6.83 per cent respectively.

2.9 The population-Employees ratio of Meghalaya works out at 57 : 1 on the basis of 1981 population.

2.10 As on 31st March, 1984, 28.83 per cent of the Employees drew a basic pay of less than Rs.351 per month, 45.56 per cent between - Rs.351 to 500|- per month, 16.09 per cent between Rs.501-750|-per month. The employees drawing basic pay between Rs.751 to Rs.1500|-per month accounted for 8.44 per cent. Those drawing between Rs.1501|- to 2500|- per month accounted for 1.02 per cent. Employees drawing Rs.2500|-or more per month accounted for only 0.06 per cent.

2.11 Meghalaya Government Employees drawing total Emoluments of less than Rs.500|- per month constituted 0.88 per cent and those drawing monthly Emoluments of between Rs.501|- to 1500|- per month constituted 90.00 per cent and those drawing monthly Emoluments of Rs.1501 to 2999 per month constituted - 7.83 per cent. The Employees drawing Emoluments of Rs.3000 and more constituted 0.30 per cent only.

2.12 According to the returns of the Census of Meghalaya Government Employees, the salary bill of the State Government Employees amounted to Rs.28.94 crores for the year ended 31st March, 1984.

2.13 259 Employees (1.11 p.c.) belonged to Scheduled Caste, 17614 (75.43 p.c.) belonged to Scheduled Tribe. 1818 (7.79 p.c.) belonged to other backward class and 3660 (15.67 p.c.) belonged to other than the above three categories.

2.14 Out of the total of 23351 Employees as on 31st March, 1984, 57.87 per cent Employees were below matric, 36.79 per cent had academic qualifications between Matric and degree in general Arts, Science or Commerce and 1.53 per cent were with Post-Graduate Degree in Arts, Science or Commerce and 0.06 per cent were with Ph.D/D.Litt. and D.Phil. 875 Employees or 3.75 per cent only had technical qualifications such as diplomas, certificates, degrees, etc. in Engineering, Agriculture, Veterinary, Medicine, etc.

2.15 Out of the 23351 Employees 21,246 (90.99 p.c.) were in the Primary Pay Scale, 2046 (8.76 p.c.) in the Secondary Scale of Pay while 59 Employees or 0.25 per cent belonged to non-regular scale of pay and fixed pay group.

2.16 91.49 per cent of the sanctioned posts were occupied in 1984 as against 91.96 per cent in 1983.

CENSUS OF MEGHALAYA GOVERNMENT
EMPLOYEES (AS ON 31ST MARCH, 1984)

3. THE RESULTS

3.0 The total number of Meghalaya Government Employees as on 31st March, 1984 was 23351 as against 21026 on the 31st March, 1981.

The table below shows the trend of Meghalaya Government Employees from 1970.

Table 3.1

Year	Number of Employees	Percentage increase over the previous census	Index of Employment Base 1970 =100
1970	4395		100
1972	9585	69.02	218
1973	13306	38.83	303
1975	16556	8.37	377
1977	18972	6.84	432
1979	20005	5.44	455
1981	21026	5.10	478
1984	23351	2.24	531

3.1 Out of the total number of 23351 Meghalaya Government Employees as on 31st March, 1984, 1587 (6.79 P.C.) were Gazetted, 15021 (64.33 P.C.) were non-Gazetted while 6743 (28.88 P.C) were Grade IV Employees inclusive of other staff borne on identical scale of pay. The temporary employees constituted the bulk of the Meghalaya Government Employees accounting for 60.71 per cent while 39.29 per cent of the employees were confirmed in one post or other on the reference date. The classification of the employees according to status and tenure of services is given below :-

Table 3.2

Number of Employees according to status and tenure of Service :-

Status	Permanent	Temporary	Total	Percentage to total
Gazetted	974	613	1587	6.79
Non-Gazetted	6332	8689	15021	64.33
Grade IV	1868	4875	6743	28.88
Total	9174	14177	23351	100.00

3.3 The highest number of State Government Employees were found in East Khasi Hills District with 11630 employees accounting for 49.81 per cent of the total. This is due to the fact that in this district, Shillong the capital of the State is located and where the Secretariat and the Heads of Department Offices of the State Government are situated. The other four districts shared the remaining 50.19 per cent as shown below :-

Table 3.3

Distribution of Government employees according to District of posting :

Districts	Gazet- ted	Non- Gazet- ted	Grade IV	Total	Percentage to State total
East Khasi Hills	915	7228	3487	11630	49.81
West Khasi Hills	102	1085	494	1681	7.20
Jaintia Hills	197	1758	780	2735	11.71
East Garo Hills	92	984	519	1595	6.83
West Garo Hills	281	3966	1463	5710	24.45

3.4 The female employees of the Meghalaya Government totalled 4291 as on 31st March, 1984. The percentage of the female employees to the total thus has gone up to 18.38 p.c. in 1984 from 17.42 p.c. in 1981 and 9.56 p.c. in 1970 as will be seen from the table below :-

Table 3.4

Distribution of employees according to sex :

Year as on 31st March	Male		Female		Total
	Male	Percentage to total	Female	Percentage to total	Total Nos.
1970	3975	90.44	420	9.56	4395
1972	8604	98.77	981	10.23	9585
1973	11913	89.35	1393	10.47	13306
1975	14577	88.04	1979	11.95	16556
1977	16404	86.46	2569	13.54	18973
1979	16949	84.72	3056	15.28	20005
1981	17363	82.58	3663	17.42	21026
1984	19060	81.62	4291	18.38	23351

5.5 The highest number of female employees was found in the Health Department with 951 female employees, accounting for 38.22 p.c. of the Department's employees. This was followed by the Education Department with 571 female employees (35.73 p.c.) and the Secretariat with 475 female employees (35.50 p.c.)

3.6 The Police Department recorded the highest number of employees with 3826 employees (16.38 p.c. of the total) followed in order by the Public Works and the Health Departments with 2726 (11.67 p.c.) and 2488 (10.66 p.c.) employees respectively. The trend of increase in some of the bigger Department is shown below :-

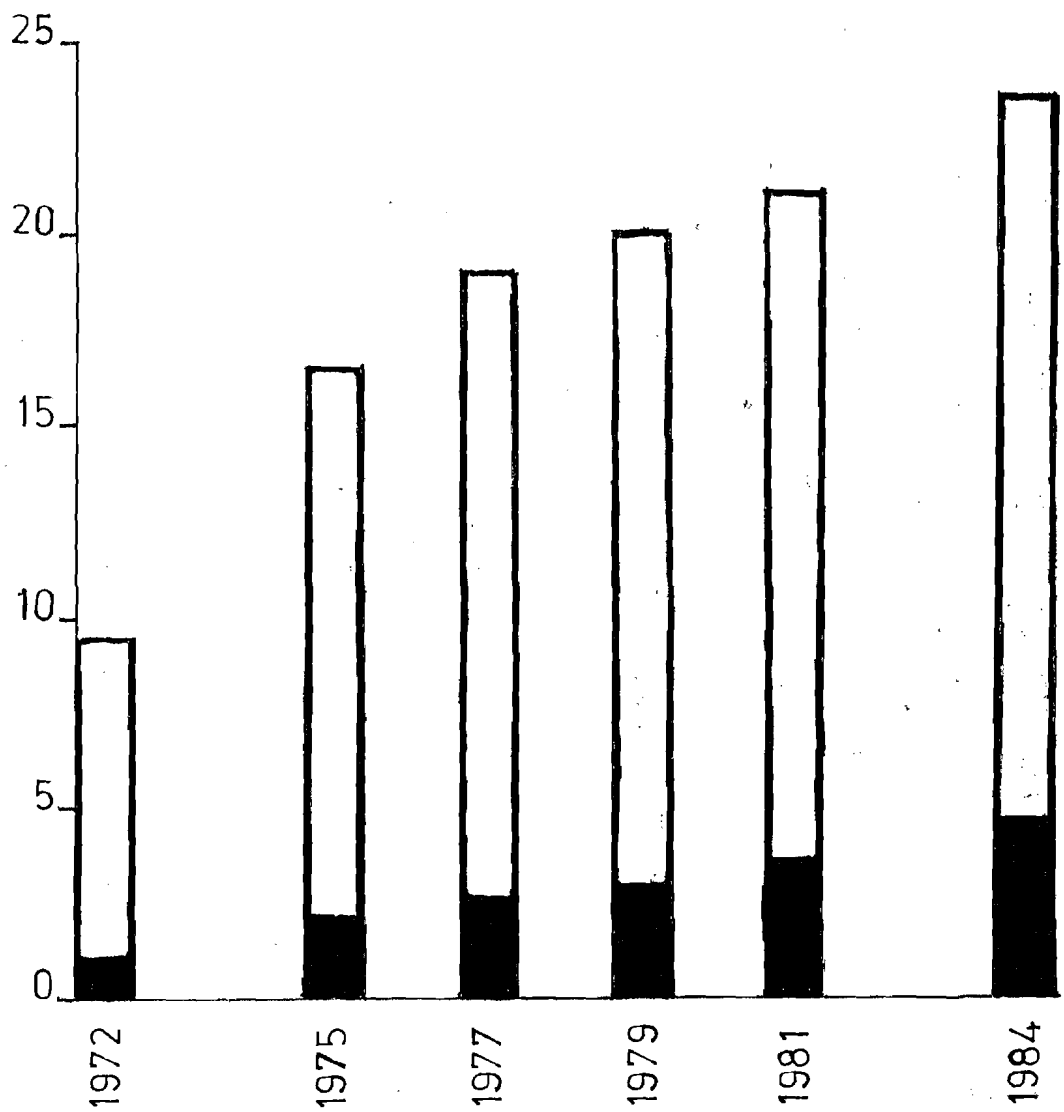
Table 3.5

Departments	1970	1971	1975	1979	(No. of employees)	
					1981	1984
Police	N.A.	66 (1.2)	4246 (25.7)	3663 (18.31)	3492 (16.61)	3826 (16.38)
Public Works	799 (18.2)	837 (14.8)	2285 (13.8)	2267 (13.33)	2153 (10.15)	2726 (11.67)
Health	814 (18.5)	1006 (17.7)	2194 (13.2)	2146 (10.77)	2532 (12.04)	2488 (10.60)
Education	457 (10.4)	700 (12.3)	1090 (6.6)	1584 (7.92)	1672 (7.95)	1598 (6.85)
Agriculture	227 (5.1)	299 (5.3)	832 (5.0)	1249 (6.24)	1270 (6.04)	1452 (6.22)

Employment Under Meghalaya Government

□ MALE
■ FEMALE

In '000 Numbers



Department	(No. of employees)					
	1970	1971	1975	1979	1981	1984
Secretariat	766 (17.4)	768 (13.5)	774 (4.7)	1071 (5.35)	1170 (5.37)	1338 (5.73)
Other Department and Offices	1337 (30.4)	1995 (35.2)	5135 (31.0)	7623 (38.11)	8757 (41.64)	9923 (42.50)
Total	4395 (100.00)	5671 (100.00)	16556 (100.00)	20005 (100.00)	21026 (100.00)	23351 (100.00)

N.B. Figures in brackets indicate percentages to the total year - wise.

Distribution of State Government Employees as on 31st March, 1984 in the Secretariat, Heads of Department (excl. D.P.I. and Director Social Welfare) and other offices, together with their break up by status, are given in the following. Table.

Table 3.6

Departments	Gazetted	Non-Gazetted	Grade IV	Total	Percentage
1. Secretariat	206	734	398	1338	5.73
2. Heads of Departments at Shillong	242	1151	619	2012	8.62
3. Other Offices	1139	13126	5726	20001	85.65
Total	1587	15021	6743	23351	100.00

3.9 Table below reveals that as on 31st March, 1984, 28.83 per cent of the State Government employees were drawing a basic pay of less than Rs.351 per month, 70.00 per cent were drawing basic pay between Rs.501.00 to Rs.1500.00 per month, while 1.02 per cent were in the basic pay group of Rs. 1501.00 to Rs.2500 per month. Only 15 persons were found drawing basic pay of above Rs.2500 per month, on the date of reference. The table below shows the distribution of State Govt. employees according to status and basic pay group.

Table No. 3.7

Monthly Basic pay(Rs)	Gazetted	Non-Gazetted	Grade IV	Total
Below 351	1 (0.06)	1801 (11.99)	4931 (73.13)	6733 (28.83)
351 - 500	2 (0.13)	8824 (58.74)	1812 (26.87)	10638 (45.56)
501 - 750	278 (17.52)	3479 (23.16)	-	3757 (16.09)
751 - 1000	544 (34.28)	821 (5.41)	-	1365 (5.85)
1001 - 1500	509 (32.07)	96 (0.64)	-	605 (2.59)
1501 - 2000	197 (12.41)	-	-	197 (0.84)
2001 - 2500	41 (2.58)	-	-	41 (0.18)
2500 and above.	15 (0.95)	-	-	15 (0.06)
Total	1587 (100.00)	15021 (100.00)	6743 (100.00)	23351 (100.00)

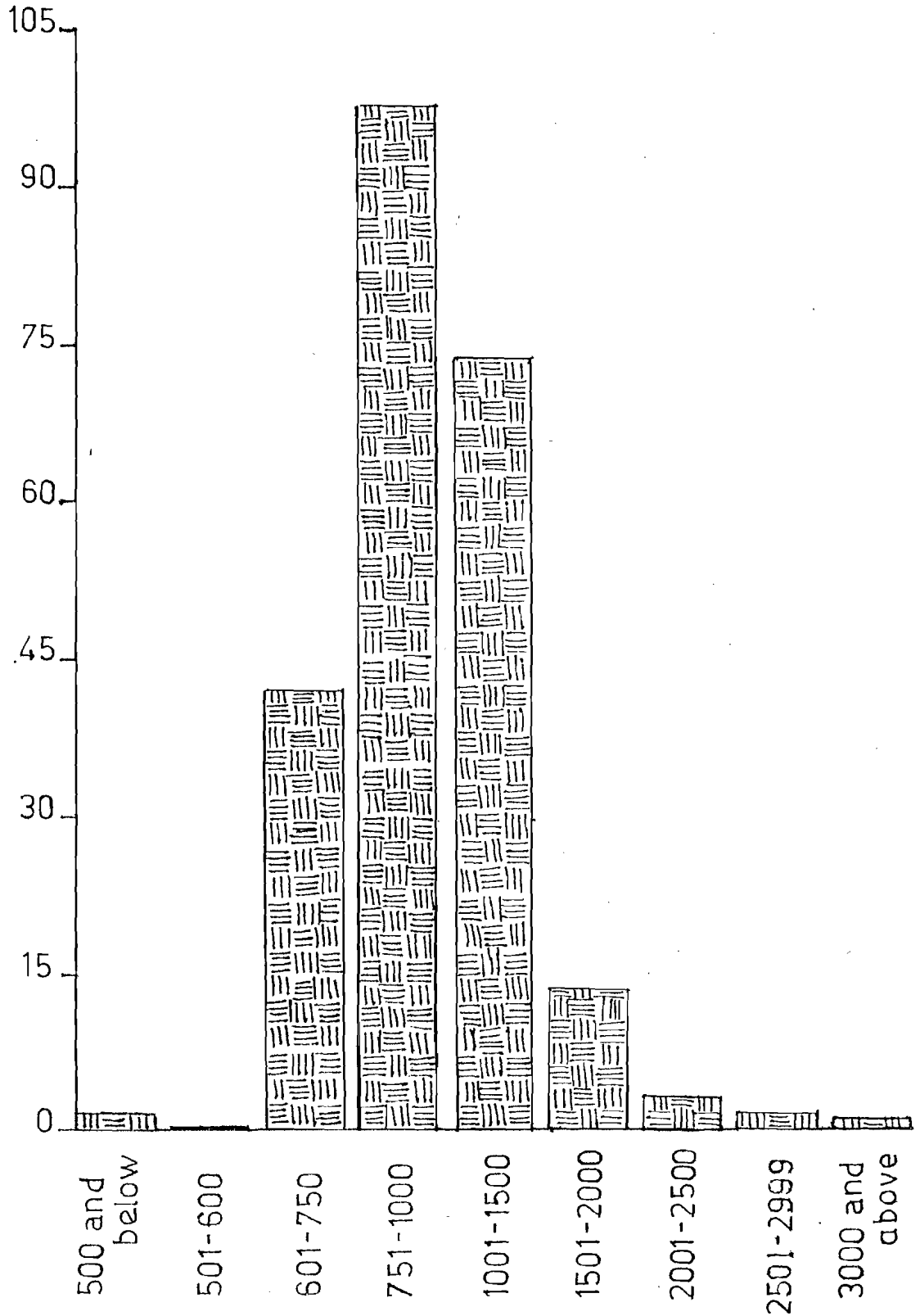
3.10 The distribution of employees according to status and emolument groups is shown below :

Table 3.8

Monthly Emolument Group (Rs.)	Gazetted	Non-Gazetted	Grade IV	Total
Below Rs.501	3 (0.19)	62 (0.41)	141 (2.09)	206 (0.88)
501 to 750	-	1059 (7.05)	3198 (47.43)	4257 (18.23)
751 to 1000	7 (0.44)	6267 (41.72)	3401 (50.44)	9675 (41.43)
1001 to 1500	447 (28.17)	6865 (45.70)	3 (0.04)	7315 (31.33)

Number of Employees According to Total Emoluments Group As on 31.3.84

In 00 Numbers



Monthly Emolument Group (Rs)	Gazetted	Non-Gazetted	Grade IV	Total
1501 to 2000	657 (41.40)	746 (4.97)	-	1403 (6.01)
2001 to 2500	264 (16.13)	22 (0.15)	-	286 (1.22)
2501 to 2999	139 (8.76)	-	-	139 (0.60)
3000 and above	70 (4.41)	-	-	70 (0.30)
Total	1587 (100.00)	15021 (100.00)	6743 (100.00)	23351 (100.00)

N.B. Figures in bracket indicates percentage to total.

3.11 75.43 per cent of the total State Govt. Employees belonged to the Schedule Tribe, 1.11 P.C. to Schedule Caste and 7.79 p.c. to other Backward Classes as will be seen from the following table :

Table 3.9

	(No. of Employees)			
	Gazetted	Non-Gazetted	Grade IV	Total
Schedule Castes	15 (0.95)	130 (0.86)	114 (1.69)	259 (1.11)
Scheduled Tribes	1117 (70.38)	11590 (77.16)	4907 (72.77)	17614 (75.43)
Other Backward Classes	55 (3.47)	1123 (7.48)	640 (9.49)	1818 (7.79)
Others	400 (25.20)	2178 (14.50)	1082 (11.05)	3660 (15.67)
Total	1587 (100.00)	15021 (100.00)	6743 (100.00)	23351 (100.00)

3.12 Out of the total of 17614 scheduled Tribes employees, 11261 employees belonged to Khasis and Jaintias; 5787 to Garos and 566 employees belonged to other communities who are recognized as Scheduled tribes. The table below shows the details :

Table 3.10

(No. of employees)

Community	Gazetted	Non-Gazetted	Grade IV	Total
Khasi and Jaintia	872 (78.06)	7475 (64.49)	2914 (59.38)	11261 (63.93)
Garos	195 (17.46)	3792 (32.72)	1800 (36.68)	5787 (32.85)
Others	50 (4.48)	323 (2.79)	193 (3.94)	566 (3.21)
Total	1117 (100.00)	11590 (100.00)	4907 (100.00)	17614 (100.00)

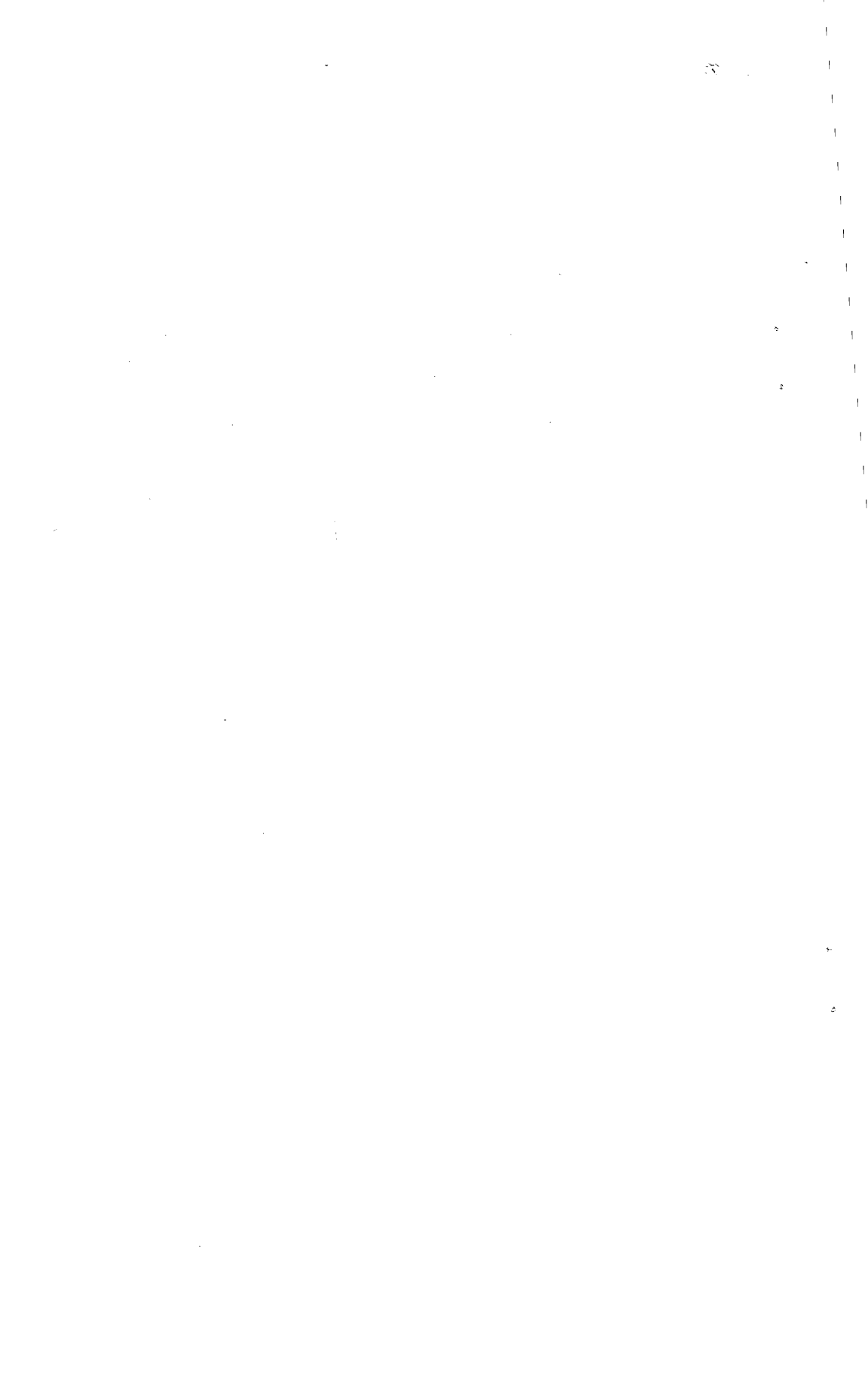
3.13 The total number of sanctioned posts in 1984 was 25,524 against which 23,351 employees were in position indicating that 2173 posts were vacant. It is observed that out of 25,524 sanctioned posts in 1984, 11,466 were permanent and 14,058 were temporary posts.

3.14 Out of 45 reporting departments, only 5 departments filled-up cent-per-cent of the sanctioned posts. The distribution of the number of sanctioned posts and number of employees in position according to tenure of service during 1981 and 1984 was briefly as below :-

Table 3.11

Tenure of Service	1981		1984	
	Number of sanctioned	Number in position	Number of sanction	Number in position
Permanent	6670	5407	11,466	9174
Temporary	15,261	15,610	14,058	14,177
Total	21,931 (100.00)	21,026 (95.87)	25,524 (100.00)	23,351 (91.49)

The results of the Census of Meghalaya Government Employees as on 31st March, 1984 are presented in greater details in the following 30 tables in the Appendix

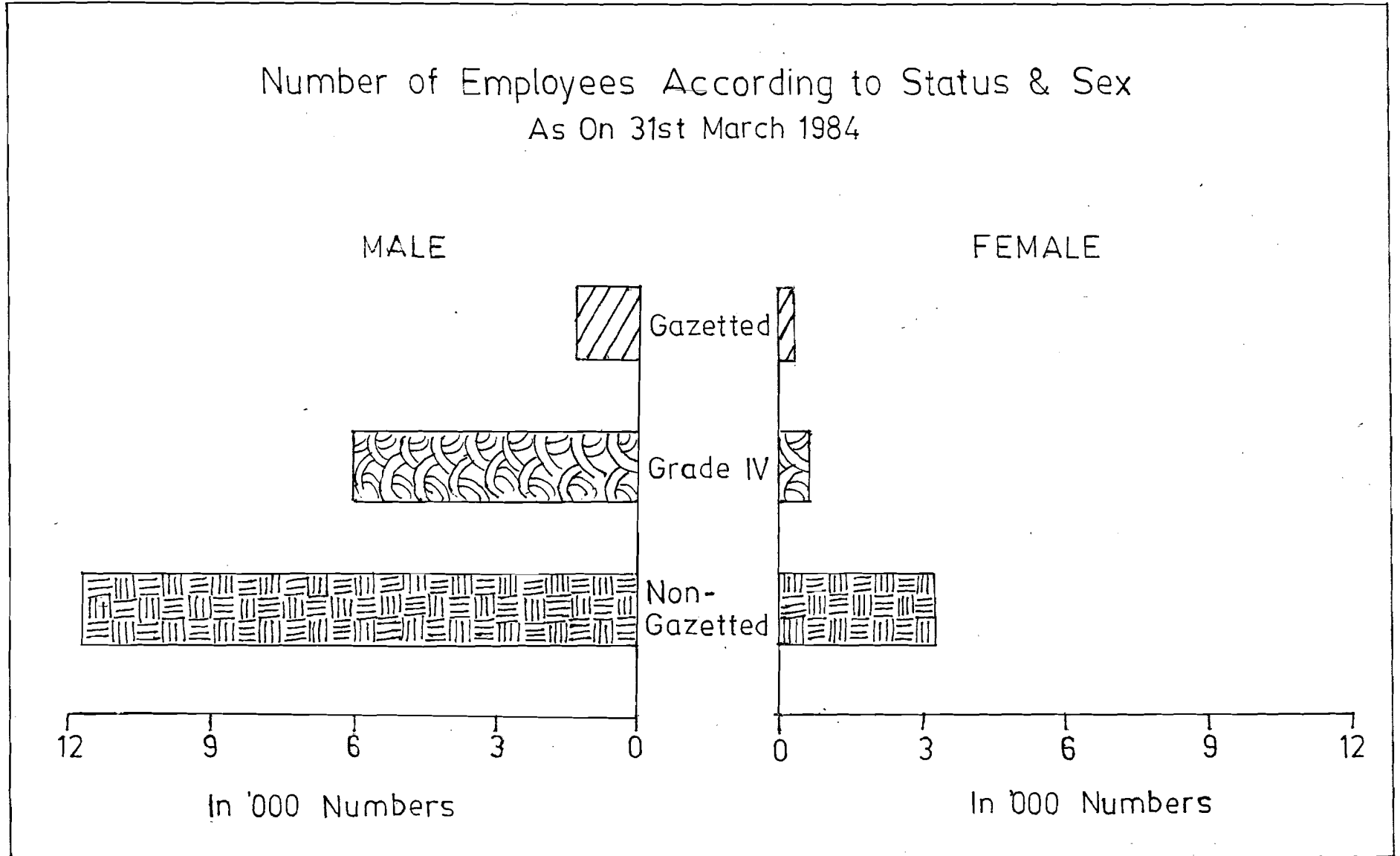


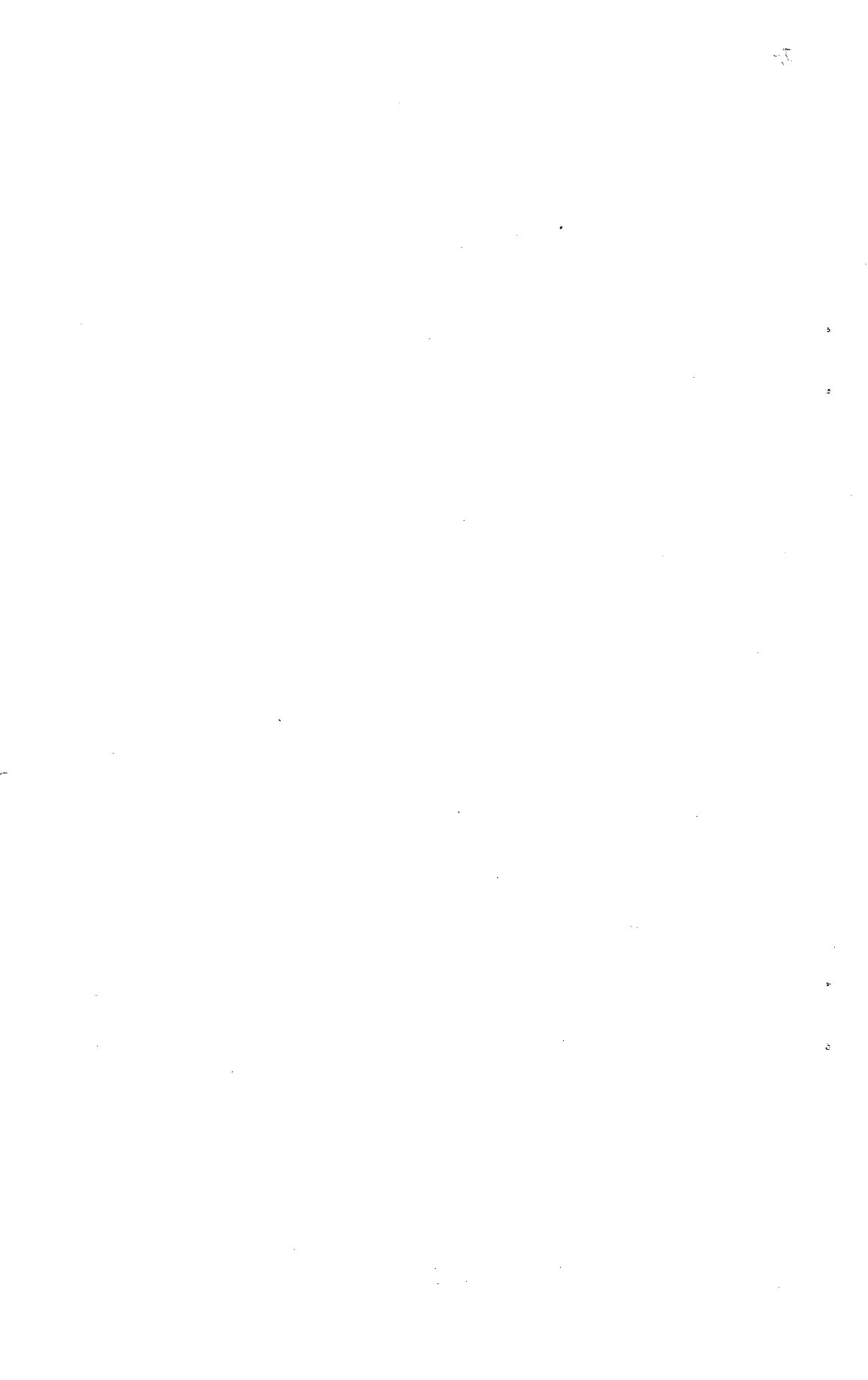
List of Tables in the Appendix 'A'

1. Number of Employees according to status and sex.
2. Number of Employees according to tenure of services, status and District.
3. Number of Employees in primary and secondary scale of pay.
4. Number of Employees in Primary Scale of pay by scales.
5. Number of Employees in Secondary scales of pay by scales.
6. Number of Employees borne neither in primary nor secondary scale of pay.
7. Number of Employees according to Basic pay groups.
8. Number of Employees according to total emoluments.
9. Estimated Expenditure on basic pay of the Employees by basic pay groups for the year ended 31st March, 1984.
10. Estimated Expenditure on emoluments of the Employees by total emolument groups for the year ended 31st March, 1984.
11. Estimated Expenditure on basic pay , dearness allowance and other allowances of the employees for the year ended 31st March, 1984 according to District.
12. Number of Employees according to Sex and District of posting.
13. Trend in Employment of Women by Meghalaya Government.
14. Number of Female Employees by Status during 1981 and 1984.
15. Number of Employees by Status and by Departments.
16. Percentage distribution of Employees by Status and by Departments.
17. Number of Employees Department-wise according to sex.
- ✓ 18. Number of Employees according to Castes|Tribes.
19. Percentage distribution of Employees according to Castes|Tribes.
20. Number of Employees department-wise according to Castes|Tribes.

21. Percentage distribution of Employees department-wise according to Castes/Tribes.
22. Distribution of Scheduled Tribes in Meghalaya Government Services according to status by main tribes.
23. District-wise distribution of Scheduled Tribes in Meghalaya Government Service as on 31st March, 1984.
24. Number of Employees according to status and academic qualifications.
25. Number of Employees appointed directly/absorbed by Meghalaya Government and on deputation from other Governments.
26. Number of Employees appointed directly/absorbed by Meghalaya Government and on deputation from other Governments by status of office of current posting.
27. Distribution of Meghalaya Government Employees appointed directly absorbed by Meghalaya Government and on deputation from other Governments.
28. Classification of Grade IV Employees as on 31st March, 1984.
29. District-wise distribution of Scheduled Tribes in Meghalaya Government services according to status and tenure of services as on 31st March, 1984.
30. Number of sanctioned posts and number in position for the year 1982, 1983 and 1984 by Departments.

Number of Employees According to Status & Sex
As On 31st March 1984





Appendix A

Table I

Number of employees according to
Status and Sex as on 31st March, '84

Status	Male	Female	Total
Gazetted	1311 (5.61)	276 (1.18)	1587 (6.79)
Non-gazetted	11668 (49.97)	3353 (14.36)	15021 (64.33)
Grade IV	6081 (26.04)	662 (2.84)	6743 (28.88)

N.B. - Figures in brackets are percentage to all employees.

Table - 2.

Number of Employees according to Tenure of Services and Status of the Districts as on 31st March, 1984.

Tenure of Services	East Khasi Hills	West Khasi Hills	Jaintia Hills	East Garo Hills	West Garo Hills	Total
<u>Permanent</u>						
Gazetted	618 (12.48)	40 (11.02)	85 (13.22)	49 (12.07)	182 (6.48)	974 (10.62)
Non-Gazetted	3359 (67.80)	274 (75.48)	435 (67.65)	312 (76.85)	1952 (69.52)	6332 (69.02)
Grade IV	977 (19.72)	49 (13.50)	123 (19.13)	45 (11.08)	674 (24.00)	1868 (20.36)
Total	4954 (100.00)	363 (100.00)	643 (100.00)	406 (100.00)	2808 (100.00)	9174 (100.00)
<u>Temporary</u>						
Gazetted	297 (4.45)	62 (4.71)	112 (5.35)	43 (3.62)	99 (3.41)	613 (4.32)
Non-Gazetted	3869 (57.95)	811 (61.53)	1323 (63.24)	672 (56.52)	2014 (69.40)	8689 (61.29)
Grade IV	2510 (37.60)	445 (33.76)	657 (31.41)	474 (39.86)	789 (27.19)	4875 (34.39)
Total	6676 (100.00)	1318 (100.00)	2092 (100.00)	1189 (100.00)	2902 (100.00)	14177 (100.00)
<u>All Employees</u>						
Gazetted	915 (7.87)	102 (6.07)	197 (7.20)	92 (5.77)	281 (4.92)	1587 (6.79)
Non-Gazetted	7228 (62.15)	1085 (64.54)	1758 (64.28)	984 (61.69)	3966 (69.46)	15021 (64.33)
Grade IV	3487 (29.98)	494 (29.39)	780 (28.52)	519 (32.54)	1463 (25.62)	6743 (28.88)
Total	11630 (100.00)	1681 (100.00)	2735 (100.00)	1595 (100.00)	5710 (100.00)	23351 (100.00)

N.B.- Figures in brackets are percentages to the totals, district-wise.

Table - 3

Number of Employees in Primary and Secondary Scale of pay

Sl. Nos.	Scale of Pay	Gazetted	Non-Gazetted	Grade IV	Total
1.	Primary scale	1072 (4.59)	13456 (57.63)	6718 (28.77)	21246 (90.99)
2.	Secondary Scale	481 (2.06)	1565 (6.70)	-	2046 (8.76)
3.	Non-Regular (including fixed Pay).	34 (0.14)	-	25 (0.11)	59 (0.25)
Total		1587 (6.79)	15021 (64.33)	6743 (28.88)	23351 (100.00)

N.B. - Figures in brackets are percentages to all employees.

Table - 4

Number of Employees in Primary
Scale of Pay by Scale

Primary Scale (Rupees)	Gazetted	Non-Gazetted	Grade IV	Total
300-5-330-6-390-7-425	-	-	6393	6393
325-7-360-EB-8-400-EB-10-500	-	3538	325	3863
350-10-400-EB-11-510-EB-13-573	-	1216	-	1216
375-12-435-EB-13-500-EB-15-650	-	4848	-	4848
400-14-470-EB-15-620-EB-16-700	-	1244	-	1244
425-15-500-EB-16-660-EB-18-750	-	595	-	595
450-17-535-EB-18-625-EB-20-825	-	444	-	444
475-18-565-EB-22-675-EB-25-925	-	326	-	326
525-20-625-EB-25-750-EB-30-1050	22	706	-	728
575-25-700-EB-30-850-EB-35-1200	135	539	-	674
625-30-775-EB-35-950-EB-40-1350	49	-	-	49
675-35-850-EB-40-1050-EB-40-1450	26	-	-	26
700-40-900-EB-40-1100-EB-45-1550	675	-	-	675
725-40-925-EB-45-1150-EB-50-1650	165	-	-	165
Total	1072	13456	6718	21246

Table - 5

Number of Employees in Secondary
Scale of Pay by Scale

Secondary Scale (Rupees)	Gazetted	Non- Gazetted	Grade IV	Total
500-15-575-EB-20-775	-	690	-	690
525-20-625-EB-25-875	-	57	-	57
550-25-675-EB-30-975	-	331	-	331
575-30-725-EB-30-1025	-	337	-	337
700-35-875-EB-35-1225	3	90	-	93
800-35-940-EB-40-1300	43	57	-	100
875-35-1015-EB-40-1375	45	3	-	48
900-40-1180-EB-45-1450	11	-	-	11
825-55-1210-EB-60-1750	41	-	-	41
1000-55-1330-EB-60-1750	80	-	-	80
1200-2000 (I.A.S. Scale)	17	-	-	17
1200-60-1620-EB-70-1900	167	-	-	167
1400-65-1725-EB-75-2100	45	-	-	45
1600-75-1900-EB-80-2300	13	-	-	13
1800-85-2140-EB-90-2500	16	-	-	16
Total	481	1565	-	2046

Table - 6

Number of Employees borne neither
in Primary nor Secondary scale of pay

Pay Scales (Rupees)	Gazetted	Non-Gazetted	Grade IV	Total
Fixed Pay of Rs.100 and below	-	-	15	15
Fixed Pay of Rs.128	-	-	1	1
" " " Rs.140	-	-	-	-
" " " Rs.150	-	-	-	-
" " " Rs.160	-	-	-	-
" " " Rs.175	-	-	-	-
" " " Rs.180	-	-	2	2
" " " Rs.190	-	-	-	-
" " " Rs.240	-	-	1	1
" " " Rs.250	-	-	4	4
" " " Rs.300	1	-	2	3
" " " Rs.400	-	-	-	-
" " " Rs.500	2	-	-	2
" " " Rs.900	-	-	-	-
" " " Rs.1000	1	-	-	1
" " " Rs.1500	-	-	-	-
" " " Rs.1600	-	-	-	-
" " " Rs.1800	-	-	-	-
" " " Rs.700 - 1300	1	-	-	1
" " " Rs.1200 - 2000	2	-	-	2
" " " Rs.1200 - 2500	-	-	-	-
" " " Rs.2000 - 2500	3	-	-	3
" " " Rs.2500 - 2750	17	-	-	17
" " " Rs.3000 -	1	-	-	1
Total	34	-	25	59

Table - 7

Number of Employees according to Basic Pay Group

Monthly Basic Group (Rupees)	Gazetted	Non-Gazetted	Grade IV	Total
300 and below	1 (0.06)	87 (0.58)	1309 (19.41)	1397 (5.93)
301 to 350	-	1714 (11.41)	3622 (53.72)	5336 (22.85)
351 to 500	2 (0.13)	8824 (58.74)	1812 (26.74)	10638 (45.56)
501 to 750	278 (17.52)	3479 (23.16)	-	3757 (16.09)
751 to 1000	544 (34.28)	821 (5.47)	-	1365 (5.85)
1001 to 1500	509 (32.07)	95 (0.64)	-	605 (2.59)
1501 to 2000	197 (12.41)	-	-	197 (0.84)
2001 to 2500	41 (2.58)	-	-	41 (0.18)
2501 to 2999	10 (0.63)	-	-	10 (0.04)
3000 and above	5 (0.32)	-	-	5 (0.02)
Total	1587 (100.00)	15021 (100.00)	6743 (100.00)	23351 (100.00)

N.B:- Figures in brackets are percentages to the totals, status-wise.

Table - 8

Number of Employees according to Total Emoluments group

Monthly Emoluments Group (Rupees)	Gazetted	Non-Gazetted	Grade IV	Total
500 and below	3 (0.19)	62 (0.41)	141 (2.09)	206 (0.88)
501 to 600	-	18 (0.12)	30 (0.45)	48 (0.21)
601 to 750	-	1041 (6.93)	3168 (46.98)	4209 (18.02)
751 to 1000	7 (0.44)	6267 (41.72)	3401 (50.44)	9675 (41.43)
1001 to 1500	447 (28.17)	6865 (45.70)	3 (0.04)	7315 (31.33)
1501 to 2000	657 (41.40)	746 (4.97)	-	1403 (6.01)
2001 to 2500	264 (16.33)	22 (0.15)	-	286 (1.22)
2501 to 2999	139 (8.76)	-	-	139 (0.60)
3000 and above	70 (4.41)	-	-	70 (0.30)
Total	1587 (100.00)	15021 (100.00)	6743 (100.00)	23351 (100.00)

N.B. - Figures in brackets are percentages to the totals, status-wise.

Table - 9

Estimated expenditures on Basic Pay of the Employees by Basic Pay Groups for the year ended 31st March, 1984:

Monthly Basic Pay Groups (Rs.)	Employees		Expenditure		Expenditure per employee per annum (Rs.)
	Nos.	Percentage	Amount (Rs.'000)	Percentage	
Below - 351	6733	28.83	26336	18.59	3911
351 - 500	10638	45.56	59953	42.32	5636
501 - 750	3757	16.09	27122	19.15	7219
751 - 1000	1365	5.85	13903	9.81	10185
1001 - 1500	605	2.59	8551	6.04	14134
1501 - 2000	197	0.84	4016	2.84	20386
2001 and above	56	0.24	1777	1.25	31732
Total	23351	100.00	141658	100.00	6066

Table - 10

Estimated Annual Expenditure on Emoluments of the Employees by Monthly Emoluments Groups for the year ended 31st March, 1984 :

Monthly Total Emoluments Group (Rs.)	Employees		Expenditure		Expenditure per Employee per annum (Rs.)
	Nos.	Percentage	Amount (Rs.'000)	Percentage	
Below 501	206	0.88	589	0.20	2859
501 - 750	4257	18.23	35844	12.39	8420
751 - 1000	9675	41.43	101644	35.12	10506
1001 - 1500	7315	31.33	107729	37.23	14727
1501 - 2000	1403	6.01	28681	9.91	20443
2001 - 2500	286	1.22	7423	2.56	25954
2501 and above	209	0.90	7484	2.59	35809
Total	23351	100.00	289394	100.00	12393

Table - 11

Estimated Expenditure on Basic Pay, Dearness Allowance and other Allowances for the year ended 31st March, 1984

(Rupees '000)

Pay Allowances	East Khasi hills	West Khasi Hills	Jaintia Hills	East Garo Hills	West Garo Hills	Total
1. Basic Pay	71464 (48.54)	9191 (45.31)	14974 (45.51)	8752 (46.84)	37277 (53.09)	141658 (48.95)
2. Dearness Allowance	52329 (35.55)	7219 (35.44)	11993 (36.45)	7040 (37.68)	23120 (32.92)	101701 (35.14)
3. Other Allowances	23421 (15.91)	3958 (19.43)	5938 (18.04)	2893 (15.48)	9825 (13.99)	46035 (15.91)
Total	147214 (100.00)	20368 (100.00)	32905 (100.00)	18685 (100.00)	70222 (100.00)	289394 (100.00)

Table - 12

Number of Employees according to sex and District of posting

District	male	Female	Total	Female Employees as % of district total
1. East Khasi Hills	8940	2690	11630	23.13
2. West Khasi Hills	1487	194	1681	11.54
3. Jaintia Hills	2066	669	2735	24.46
4. East Garo Hills	1395	200	1595	12.54
5. West Garo Hills	5172	538	5710	9.42
Total	19060	4291	23351	18.38

Table - 13

Trend in Employment of Women by Meghalaya
Government (in Number)

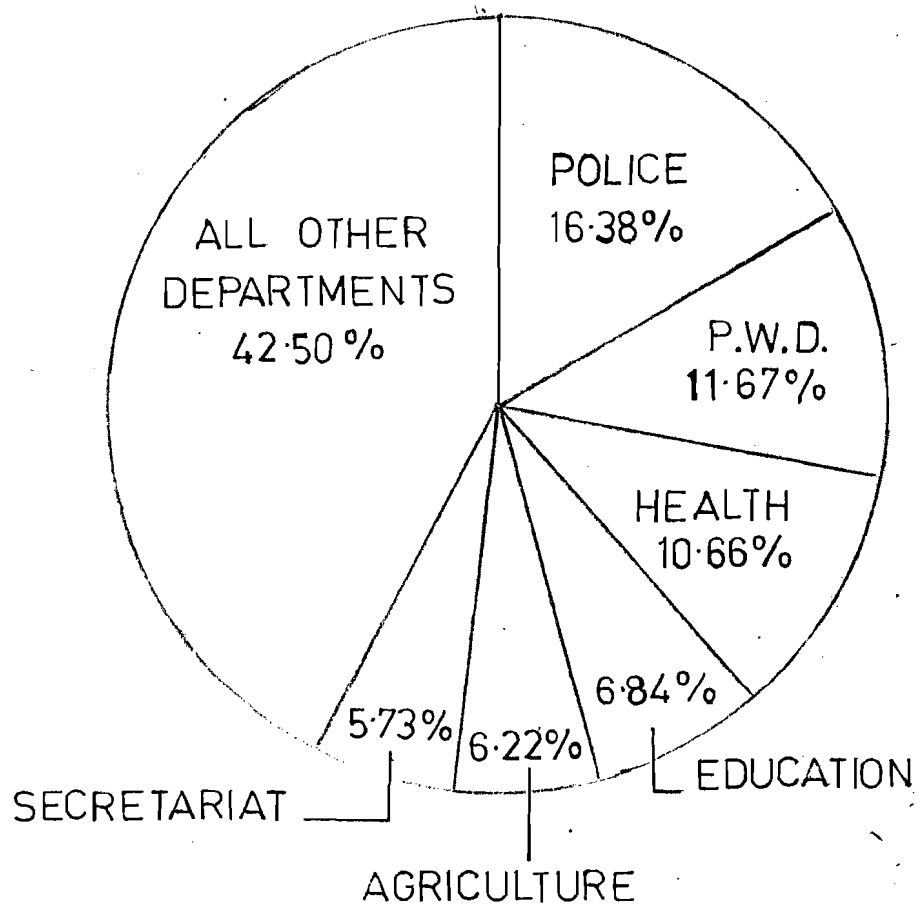
Departments	1970	1972	1973	1975	1977	1979	1981	1984
Health (Medical)	158 (100.00)	264 (167)	407 (257)	549 (347)	648 (410)	656 (415)	920 (582)	951 (602)
Education	76 (100.00)	219 (288)	320 (421)	326 (429)	416 (547)	473 (622)	562 (739)	571 (751)
Secretariat N.A		68 (166)	92 (224)	164 (500)	293 (715)	335 (817)	398 (971)	475 (1158)
Public Works	40 (100.00)	100 (250)	144 (360)	196 (490)	266 (665)	311 (778)	234 (585)	409 (1022)
Community Develop- ment	56 (100.00)	61 (109)	73 (130)	98 (175)	107 (191)	103 (184)	106 (189)	118 (211)
Other Depart- ments	90 (100.00)	269 (299)	357 (397)	646 (718)	839 (932)	1178 (1309)	1443 (1603)	1767 (1963)
Total	420 (100)	981 (233)	1393 (332)	1979 (471)	2569 (612)	3056 (728)	3663 (872)	4291 (1022)

Table - 14

Number of Female Employees by status during 1981 and 1984 :

Status	1 9 8 1			1 9 8 4		
	All Employees	Female Employees	Percentage of female employees to all total.	All Employees	Female Employees	Percentage of female employees to all Employees
Gazetted	1,293	191	14.77	1587	276	17.39
Non-Gazetted	13,686	2,990	21.85	15021	3353	22.32
Grade IV	6,047	482	7.97	6743	662	9.82
Total	21,026	3,663	17.42	23351	4291	18.38

Department-wise
Composition of Employees ;
AS ON 31st MARCH 1984



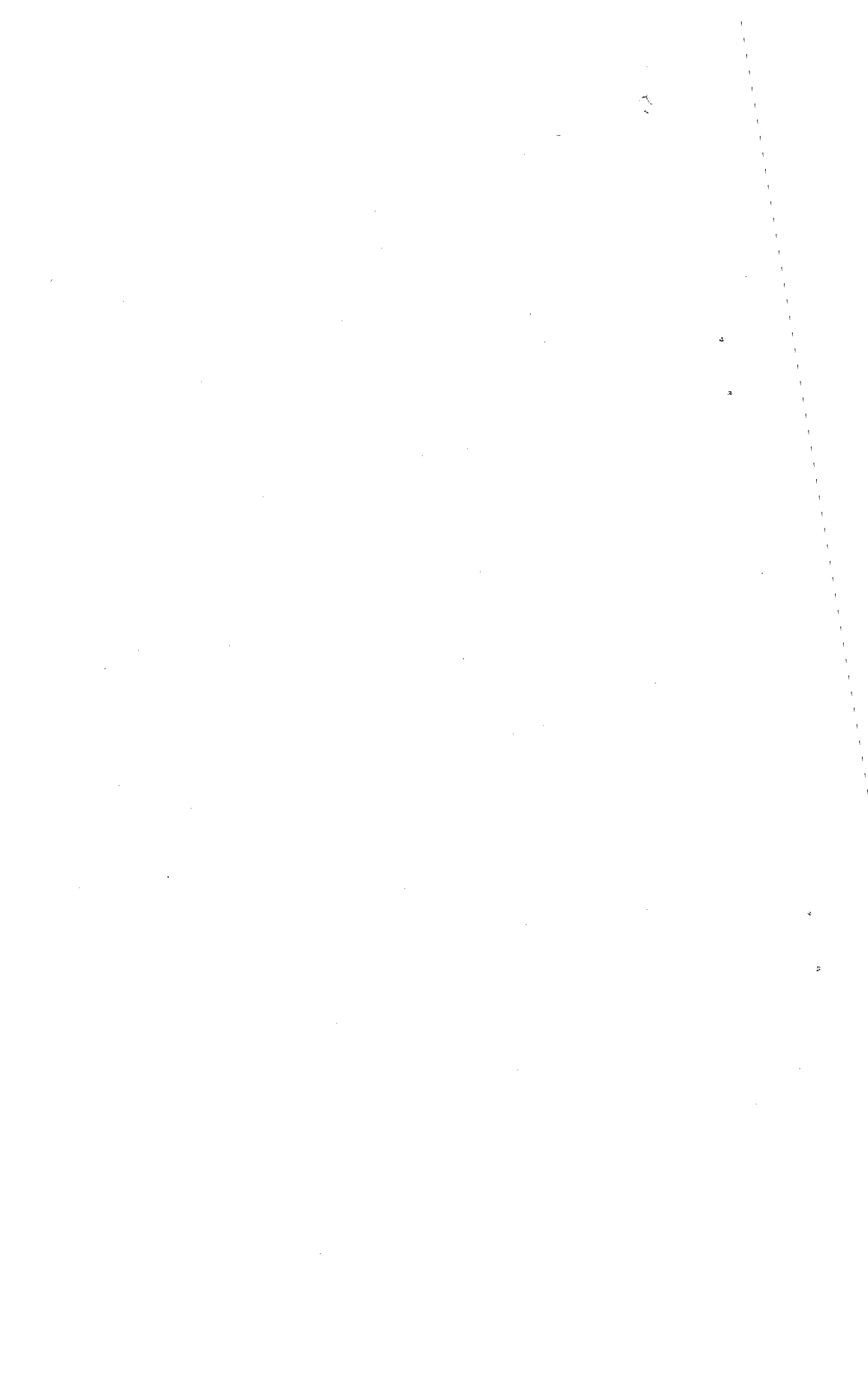


Table - 15

Number of Employees by Status
and by Departments :

Sl. No.	Departments	Gazetted	Non-Gazetted	Grade IV	Total
1.	Accounts	20	149	48	217
2.	Agriculture	156	765	531	1452
3.	Animal Husbandry & Veterinary	91	437	486	1014
4.	Assembly Secretariat	12	47	82	141
5.	Boiler & Factories Inspectorate	1	6	3	10
6.	Border Area Development	14	35	41	90
7.	Civil Defence and Home Guards and Civil Task Force	15	115	110	240
8.	Community Development	56	615	129	800
9.	Co-operation	22	153	68	243
10.	Economics, Statistics & Evaluation	20	125	34	179
11.	Education including Technical Education & N.C.C.	166	925	507	1598
12.	Election	4	98	34	186
13.	Electricity Inspectorate	1	13	7	21
14.	Employment services	12	80	41	133
15.	Excise	8	132	47	187
16.	Fisheries	9	113	96	218
17.	Forest	26	552	240	818
18.	General Administration including D.C.'s Offices, Meghalaya Houses etc.	49	307	320	676
19.	Geology & Mining	26	86	48	160
20.	Government Press	5	355	32	392
21.	Governor's Secretariat	-	-	-	-
22.	Health	210	1298	980	2488
23.	Housing & Town Planning	9	58	23	90
24.	Industries	25	211	109	345
25.	Information & Public Relation	13	73	34	120
26.	Jail	3	28	3	34
27.	Judicial including High Court	7	48	40	95
28.	Labour	6	17	12	35
29.	Land Records including Survey	7	98	178	283
30.	Police	51	3624	151	3826
31.	Public Health Engineering	72	592	378	1042

Sl. Departments No.	Gazetted	Non-Ga- zетted	Grade IV	Total
32. Public Service Com- mission	9	27	20	56
33. Public Works	109	1817	800	2726
34. Secretariat and Planning	206	734	398	1338
35. Sericulture & Weaving	18	299	139	456
36. Small Saving	-	4	1	5
37. Social Welfare	10	63	85	158
38. Soil Conservation	38	573	241	852
39. Stationary & Stores	1	13	13	27
40. Supply and Trade	17	128	40	185
41. Taxation	40	62	54	156
42. Tourism	7	23	31	61
43. Transport	5	86	32	123
44. Weights & Measures	4	30	27	61
45. Finance & Economic Affairs	7	7	-	14
Total	1587	15021	6743	23351

Table - 16

Percentage distribution of Employees
by status and by Departments ;

Sl. Departments No.	Percentage of Department Total				Percentage of State Total			
	Gazetted	Non-Ga- zettered	Grade IV	Total	Gazetted	Non-Ga- zettered	Grade IV	Total
1. Accounts	9.22	68.66	22.12	100.00	1.26	0.99	0.71	0.97
2. Agriculture	10.74	52.69	36.57	100.00	9.83	5.09	7.88	6.22
3. Animal Husban- dry & Veteri- nary	8.97	43.10	47.93	100.00	5.73	2.91	7.21	4.34
4. Assembly Se- cretariat.	8.51	33.33	58.16	100.00	0.76	0.31	1.22	0.60
5. Boiler & Fac- tories Inspec- torate	10.00	60.00	30.00	100.00	0.06	0.04	0.04	0.04
6. Border Area Development	15.56	38.89	45.55	100.00	0.88	0.23	0.61	0.38
7. Civil Defence & Home Guards & Civil Task Force	6.25	47.92	45.83	100.00	0.95	0.76	1.63	1.03
8. Community Dev.	7.00	76.87	16.13	100.00	3.53	4.09	1.91	3.42
9. Cooperation	9.06	62.96	27.98	100.00	1.39	1.02	1.01	1.04
10. Economics, Statistics & Evaluation	11.17	69.83	19.00	100.00	1.26	0.83	0.50	0.77
11. Education in- cluding Tec- hnical Edu- cation & N.C.C.	10.39	57.88	31.73	100.00	10.46	6.16	7.52	6.84
12. Election	7.15	52.69	45.16	100.00	0.25	0.65	1.25	0.80
13. Electricity Inspectorate	4.76	61.91	33.33	100.00	0.06	0.09	0.10	0.09
14. Employment Services	9.02	60.15	30.83	100.00	0.76	0.53	0.61	0.57
15. Excise	4.28	70.59	25.13	100.00	0.50	0.88	0.70	0.80
16. Fisheries	4.13	51.83	44.04	100.00	0.57	0.57	1.42	0.93
17. Forest	3.18	67.48	29.34	100.00	1.64	3.68	3.56	3.50
18. General Admi- nistration in- cluding D.C's offices, Megha- laya Houses etc.	7.25	45.41	47.34	100.00	3.09	2.04	4.75	2.89
19. Geology & Mi- ning	16.25	53.75	30.00	100.00	1.64	0.57	0.71	0.68
20. Government Press	1.28	90.56	8.16	100.00	0.31	2.36	0.48	1.68
21. Governor's Secretariat	-	-	-	-	-	-	-	-
22. Health	8.44	52.17	39.39	100.00	13.23	8.64	14.53	10.66
23. Housing & Town Pla- nning	10.00	64.44	25.56	100.00	0.57	0.39	0.34	0.38
24. Industries	7.25	61.16	31.59	100.00	1.58	1.41	1.62	1.48
25. Information & Public Rela- tion	10.83	60.84	28.33	100.00	0.82	0.49	0.50	0.51
26. Jail	8.82	82.36	8.82	100.00	0.19	0.19	0.04	0.15
27. Judicial in- cluding High Court	7.37	50.53	42.10	100.00	0.44	0.32	0.59	0.41

Sl. Departments No.	Percentage of Department Total				Percentage of State Total			
	Gazet- ted	Non- Gaze- tted	Grade IV	Total	Gaze- tted	Non- Gaze- tted	Grade IV	Total
28. Labour	17.14	48.57	34.29	100.00	0.38	0.11	0.18	0.15
29. Land Records including Survey	2.47	34.63	62.90	100.00	0.44	0.65	2.64	1.21
30. Police	1.33	94.72	3.95	100.00	3.21	24.13	2.24	16.38
31. Public Health Engineering	6.91	56.81	36.28	100.00	4.54	3.94	5.61	4.46
32. Public Service Commission	16.07	48.21	35.72	100.00	0.57	0.18	0.30	0.24
33. Public Works	4.00	66.65	29.35	100.00	6.87	12.10	11.86	11.67
34. Secretariat including Planning	15.40	54.86	29.74	100.00	12.98	4.89	5.90	5.73
35. Sericulture & Weaving	3.95	65.57	30.48	100.00	1.13	1.99	2.06	1.95
36. Small Savings	-	80.00	20.00	100.00	-	0.03	0.02	0.02
37. Social Welfare	6.33	39.87	53.80	100.00	0.63	0.42	1.26	0.68
38. Soil Conserva- tion	4.46	67.25	28.29	100.00	2.39	3.82	3.57	3.65
39. Stationery & Stores	3.70	48.15	48.15	100.00	0.06	0.09	0.19	0.11
40. Supply & Trade	9.19	69.19	21.62	100.00	1.07	0.85	0.59	0.79
41. Taxation	25.64	39.74	34.62	100.00	2.52	0.41	0.80	0.67
42. Tourism	11.48	37.70	50.82	100.00	0.44	0.15	0.46	0.26
43. Transport	4.06	69.92	26.02	100.00	0.37	0.57	0.48	0.53
44. Weight & Measures	6.56	49.18	44.26	100.00	0.25	0.20	0.40	0.26
45. Finance	50.00	50.00	-	100.00	0.44	0.05	-	0.06
Total	6.79	64.33	28.88	100.00	100.00	100.00	100.00	100.00

Table - 17

Number of Employees Department wise
according to Sex

Sl. Departments No.	Male		Female		Total	
	No.	Per- cen- tage	No.	Per- cen- tage	No.	Per- cen- tage
1. Accounts	159	73.27	58	26.73	217	100.00
2. Agriculture	1263	86.98	189	13.02	1452	100.00
3. Animal Husbandry & Veterinary	920	90.73	94	9.27	1014	100.00
4. Assembly Secretariat	98	69.50	43	30.50	141	100.00
5. Boilers & Factories Inspectorate	8	80.00	2	20.00	10	100.00
6. Border Area Development	84	93.33	6	6.67	90	100.00
7. Civil Defence & Home Guards & Civil Task Force	215	89.58	25	10.42	240	100.00
8. Community Development	682	85.25	118	14.75	800	100.00
9. Co-operation	184	75.72	59	24.28	243	100.00
10. Economics, Statistics & Evaluation	149	83.24	30	16.76	179	100.00
11. Education including Technical Education & N.C.C.	1027	64.27	571	35.73	1598	100.00
12. Election	145	77.96	41	22.04	186	100.00
13. Electricity Inspectorate	16	76.19	5	23.81	21	100.00
14. Employment Services	104	78.20	29	21.80	133	100.00
15. Excise	158	84.49	29	15.51	187	100.00
16. Fisheries	196	89.91	22	10.09	218	100.00
17. Forests	747	91.32	71	8.68	818	100.00
18. General Administration including D.C.'s Offices, Meghalaya Houses, etc.	538	79.59	138	20.41	676	100.00
19. Geology & Mining	135	84.38	25	15.62	160	100.00
20. Government Press	358	91.33	34	8.67	392	100.00
21. Governor's Secretariat	-	-	-	-	-	-
22. Health	1537	61.78	951	38.22	2488	100.00
23. Housing & Town Planning	73	81.11	17	18.89	90	100.00
24. Industries	277	80.29	68	19.71	345	100.00
25. Information & Public Relation.	106	88.33	14	11.67	120	100.00
26. Jail	26	76.47	8	23.53	34	100.00
27. Judicial including High Court	76	80.00	19	20.00	95	100.00

Sl. Departments No.	Male		Female		Total	
	No.	Per- cen- tage	No.	Per- cen- tage	No.	Per- cen- tage
28. Labour	25	71.43	10	28.57	35	100.00
29. Land Records including Survey	239	84.45	44	15.55	383	100.00
30. Police	3725	97.36	101	2.64	3825	100.00
31. Public Health Engineering	862	84.73	180	17.27	1042	100.00
32. Public Service Commission	37	66.07	19	33.93	56	100.00
33. Public Works	2317	85.00	409	15.00	2726	100.00
34. Secretariat & Planning	863	64.50	475	35.50	1338	100.00
35. Sericulture & Weaving	344	75.44	112	24.56	456	100.00
36. Small Saving	3	60.00	2	40.00	5	100.00
37. Social Wel- fare	66	41.77	92	58.23	158	100.00
38. Soil Conser- vation	806	94.60	46	5.40	852	100.00
39. Stationery & Stores	18	66.67	9	33.33	27	100.00
40. Supply & Trade	149	80.54	36	19.46	185	100.00
41. Taxation	111	71.15	45	28.85	156	100.00
42. Tourism	47	77.05	14	22.95	61	100.00
43. Transport	105	85.37	18	14.63	123	100.00
44. Weight & Measures	52	85.25	9	14.75	61	100.00
45. Finance	10	71.43	4	28.57	14	100.00
Total	19060	81.62	4291	18.38	23351	100.00

Classification of Employees by Castes/Tribes

AS ON 31st MARCH 1984

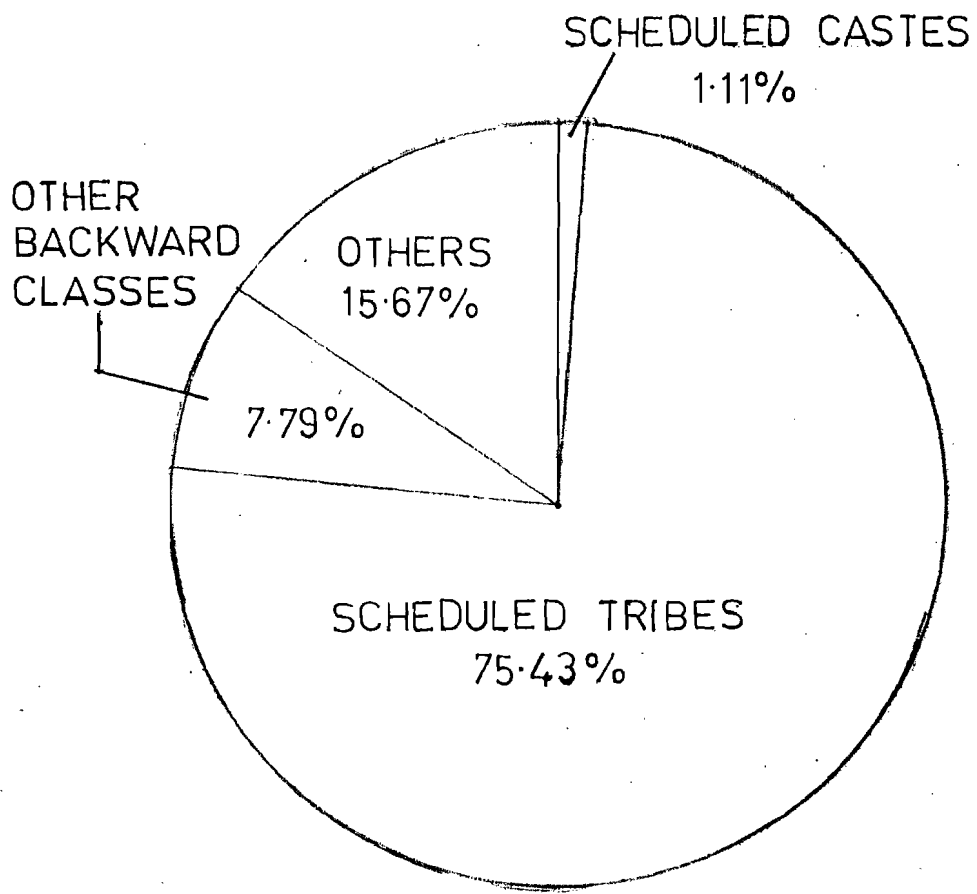


Table - 18

Number of Employees according
to Caste/Tribe

Status	Tenure of Service.	Sche- duled Caste	Sche- duled Tribes	Other Back- ward clas- ses	Others	Total
Gazetted	Perma- nent	11 (1.13)	642 (65.91)	32 (3.29)	289 (29.67)	974 (100.00)
	Tempo- rary	4 (0.65)	475 (77.49)	23 (3.75)	111 (18.11)	613 (100.00)
	Total	15 (0.95)	1117 (70.38)	55 (3.47)	400 (25.20)	1587 (100.00)
Non- Gazetted	Perma- nent	65 (1.03)	4356 (68.79)	688 (10.87)	1223 (19.31)	6332 (100.00)
	Tempo- rary	65 (0.75)	7234 (83.25)	435 (5.01)	955 (10.99)	8689 (100.00)
	Total	130 (0.86)	11590 (77.16)	1123 (7.48)	2178 (14.50)	15021 (100.00)
Grade IV	Perma- nent	41 (2.20)	1265 (67.72)	216 (11.56)	346 (18.52)	1868 (100.00)
	Tempo- rary	73 (1.49)	3642 (74.71)	424 (8.60)	736 (15.10)	4875 (100.00)
	Total	114 (1.69)	4907 (72.77)	640 (9.49)	1082 (16.05)	6743 (100.00)
All Employees	Perma- nent	117 (1.28)	6263 (68.27)	936 (10.20)	1858 (20.25)	9174 (100.00)
	Tempo- rary	142 (1.00)	11351 (80.07)	882 (6.22)	1802 (12.71)	14177 (100.00)
	Total	259 (1.11)	17614 (75.43)	1818 (7.79)	3660 (15.67)	23351 (100.00)

N.B- Figures in brackets are Percentages to totals.

Table 19

Percentage distribution of Employees
according to Caste|Tribe

Status	Tenure of Ser- vice	Sche- duled Caste	Sche- duled Tribe	Other Back- ward Clas- ses	Others	Total
Gazetted	Perma- nent	73.33	57.48	58.18	72.25	61.37
	Tempo- rary	26.67	42.52	41.82	27.75	38.63
	Total	100.00	100.00	100.00	100.00	100.00
Non- Gazetted	Perma- nent	50.00	37.58	61.26	56.15	42.15
	Tempo- rary	50.00	62.42	38.74	43.85	57.85
	Total	100.00	100.00	100.00	100.00	100.00
Grade IV	Perma- nent	35.96	25.78	33.75	31.98	27.70
	Tempo- rary	64.04	74.22	66.25	68.02	72.30
	Total	100.00	100.00	100.00	100.00	100.00
All Employees	Perma- nent	45.17	35.56	51.49	50.77	39.29
	Tempo- rary	54.83	64.44	48.51	49.23	60.71
	Total	100.00	100.00	100.00	100.00	100.00

Table - 20

Number of Employees Department-wise
according to Caste | Tribe

Sl No.	Department	Sche- duled Caste	Sche- duled Tribe	Other back- ward clas- ses	Others	Total
1.	Accounts	4	176	11	26	217
2.	Agriculture	7	1225	78	142	1452
3.	Animal Husbandry & Veterinary	11	785	79	139	1014
4.	Assembly Secretariat	-	118	-	23	141
5.	Boilers & Factories Inspectorate	-	8	-	2	10
6.	Border Area Deve- lopement	-	88	1	1	90
7.	Civil Defence & Home Guards & Civil Task Force	2	198	19	21	240
8.	Community Develop- ment	4	698	40	58	800
9.	Co-operation	9	182	16	36	243
10.	Economics, Statis- tics & Evaluation	-	151	8	20	179
11.	Education including Technical Education & N.C.C.	27	1279	104	188	1598
12.	Election	2	175	4	5	186
13.	Electricity Inspec- torate	-	17	1	3	21
14.	Employment Services	1	100	5	27	133
15.	Excise	5	164	7	11	187
16.	Fisheries	3	195	15	5	218
17.	Forests	5	605	71	137	818
18.	General Administra- tion including D.C.'s Offices, Meghalaya Houses, etc.	14	503	42	117	676
19.	Geology & Mining	-	117	8	35	160
20.	Government Press	15	171	29	177	392
21.	Governor's Secreta- riat	-	-	-	-	-
22.	Health	10	1913	126	439	2488
23.	Housing & Town Planning	2	76	4	8	90
24.	Industries	2	275	29	39	345
25.	Information & Public Relation	1	107	2	10	120
26.	Jail	-	21	7	6	34
27.	Judicial including High Court	1	72	8	14	95
28.	Labour	-	35	-	-	35
29.	Land Records inclu- ding Survey	5	275	2	1	283
30.	Police	38	2382	639	167	3826
31.	Public Health Engineering	5	659	100	278	1042

Sl. Department No.	Sche- duled Caste	Sche- duled Tribe	Other backward Classes	Others	Total
32. Public Service Commission	-	52	-	4	56
33. Public Works	63	1780	219	664	2726
34. Secretariat & Planning	-	1227	34	77	1338
35. Sericulture & Weaving	12	358	37	49	456
36. Small Saving	-	4	1	-	5
37. Social Welfare	2	153	2	1	158
38. Soil Conservation	1	747	37	67	852
39. Stationery & Stores	-	24	-	3	27
40. Supply & Trade	8	150	10	17	185
41. Taxation	-	131	7	18	156
42. Tourism	-	42	11	8	61
43. Transport	-	105	4	14	123
44. Weight & Measures	-	58	1	2	61
45. Finance	-	13	-	1	14
Total	259	17614	1818	3660	23351

Table - 21

Percentage distribution of Employees Department-wise according to Caste/Tribe.

Sl. Departments No.	Sche- duled Caste	Sche- duled Tribes	Other backward classes	Others	Total
1. Accounts	1.84	81.11	5.07	11.98	100.00
2. Agriculture	0.84	84.37	5.37	9.78	100.00
3. Animal Husbandry & Veterinary	1.08	77.42	7.79	13.71	100.00
4. Assembly Secretariat	-	83.69	-	16.31	100.00
5. Boilers & Factories Inspectorate	-	80.00	-	20.00	100.00
6. Border Area Development	-	97.78	1.11	1.11	100.00
7. Civil Defence & Home Guards & Civil Task Force	0.83	82.50	7.92	9.92	100.00
8. Community Developments	0.50	87.25	5.00	7.25	100.00
9. Co-operation	3.70	74.90	6.58	14.82	100.00
10. Economics, Statistics & Evaluation	-	84.36	4.47	11.17	100.00
11. Education including Technical Education, & N.C.C.	1.69	80.04	6.51	11.76	100.00
12. Election	1.07	94.09	2.15	2.69	100.00
13. Electricity Inspectorate	-	80.95	4.76	14.29	100.00
14. Employment Services	0.75	75.19	3.76	20.30	100.00
15. Excise	2.69	87.70	3.75	5.88	100.00
16. Fisheries	1.38	89.45	6.88	2.29	100.00
17. Forests	0.61	73.96	8.68	16.75	100.00
18. General Administration including D.C.'s Offices, Meghalaya Houses, etc.	2.07	74.41	6.21	17.31	100.00
19. Geology & Mining	-	73.13	5.00	21.87	100.00
20. Government Press	3.83	43.62	7.40	45.15	100.00
21. Governor's Secretariat	-	-	-	-	-
22. Health	0.40	76.89	5.06	17.65	100.00
23. Housing & Town Planning	2.22	84.44	4.45	8.89	100.00
24. Industries	0.58	79.71	8.41	11.30	100.00
25. Information & Public Relation	0.83	89.17	1.67	8.33	100.00
26. Jail	-	61.76	20.59	17.65	100.00
27. Judicial including High Court	1.05	75.79	8.42	14.74	100.00
28. Labour	-	100.00	-	-	100.00
29. Land Records including Survey	1.77	97.17	0.71	0.35	100.00

Sl. Departments No.	Sche- duled Caste	Sche- duled Tribes	Other backward classes	Others	Total
30. Police	0.99	62.26	16.70	20.05	100.00
31. Public Health Engineering	0.48	63.24	9.60	26.68	100.00
32. Public Service Commission	-	92.86	-	7.14	100.00
33. Public Works	2.31	65.30	8.03	24.36	100.00
34. Secretariat including Planning	-	91.70	2.54	5.76	100.00
35. Sericulture & Weaving	2.63	78.51	8.11	10.75	100.00
36. Small Savings	-	80.00	20.00	-	100.00
37. Social Welfare	1.27	96.83	1.27	0.63	100.00
38. Soil Conser- vation	0.12	87.68	4.34	7.86	100.00
39. Stationary & Stores	-	88.89	-	11.11	100.00
40. Supply & Trade	4.32	81.08	5.41	9.19	100.00
41. Taxation	-	83.97	4.49	11.54	100.00
42. Tourism	-	68.85	18.03	13.12	100.00
43. Transport	-	85.37	3.25	11.38	100.00
44. Weight & Mea- sures	-	95.08	1.64	3.28	100.00
45. Finance	-	92.86	-	7.14	100.00
Total	1.11	75.43	7.79	15.67	100.00

Table - 22

Distribution of Scheduled Tribes in Meghalaya Government Service according to status by main tribes

Sl. No.	Status	Khasi & Jaintia	Garo	Others	Total
1.	Gazetted	872 (3.74)	194 (0.83)	50 (0.21)	1117 (4.78)
2.	Non-Gazetted	7475 (32.01)	3792 (16.24)	323 (1.38)	11590 (49.63)
3.	Grade IV	2914 (12.48)	1800 (7.71)	193 (0.83)	4907 (21.02)
Total		11261 (48.23)	5787 (24.78)	566 (2.42)	17614 (75.43)

N.B. Figures in brackets are percentages to all employees

Table - 23

District-wise Distribution of Scheduled tribes in Meghalaya Govt. Services as on 31st March, 1984.

Sl. No.	District	Khasi Jaintia	Garo	Other Tribes	Total
1.	East Khasi Hills	7433 (31.83)	1095 (4.69)	202 (0.87)	8730 (37.39)
2.	West Khasi Hills	1237 (5.30)	99 (0.42)	21 (0.09)	1357 (5.81)
3.	Jaintia Hills	2220 (9.51)	44 (0.19)	73 (0.31)	2337 (10.01)
4.	East Garo Hills	25 (0.11)	1142 (4.89)	38 (0.16)	1205 (5.16)
5.	West Garo Hills	346 (1.48)	3407 (14.59)	232 (0.99)	3985 (17.06)
Total		11261 (48.23)	5787 (24.78)	566 (2.42)	17614 (75.43)

N.B. Figures in brackets are percentages to all employees.

Table - 24

Number of Employees according to status and academic qualification

Sl. No.	Educational qualifications	Gazetted	Non-Gazetted	Grade IV	Total
1.	Below Matric	34 (2.14)	6943 (46.22)	6536 (96.93)	13513 (57.87)
2.	Matriculate	37 (2.33)	4079 (27.16)	176 (2.61)	4292 (18.38)
3.	P.U. Inter- diate	75 (4.73)	2009 (13.37)	27 (0.40)	2111 (9.04)
4.	Diploma in Engg., Agril Veterinary	120 (7.56)	270 (1.80)	-	390 (1.67)
5.	Degree in Arts SC. Commerce	564 (35.54)	1620 (10.78)	4 (0.06)	2188 (9.37)
6.	Degree in Engg. Medical Agril. Veterinary	406 (25.58)	-	-	406 (1.74)
7.	Post Graduate in Arts Sc. Commerce	257 (16.19)	100 (0.67)	-	357 (1.53)
8.	Post Graduate in Engg. Medical Agril. Veterinary	79 (4.98)	-	-	79 (0.34)
9.	Ph.D D.Litt. D.Phill.	15 (0.95)	-	-	15 (0.06)
Total		1587 (100.00)	15021 (100.00)	6743 (100.00)	23351 (100.00)

N.B. Figures in brackets are percentages to the totals, status-wise.

Table - 25

Number of Employees appointed directly | absorbed
by Meghalaya Govt. , on deputation from other Governments

Status	Appointed Directly	On Deputation from	Total
	absorbed by Meghalaya other Governments		
Gazetted	1444 (90.99)	143 (0.01)	1587 (100.00)
Non-Gazetted	13932 (92.75)	1089 (7.25)	15021 (100.00)
Grade IV	6331 (93.89)	412 (6.11)	6743 (100.00)
Total	21707 (92.96)	1644 (7.04)	23351 (100.00)

N.B. Figures in brackets are percentages to the totals, status-wise.

Table -26

Number of Employees appointed directly|absorbed by Meghalaya Govt., on deputation from other Govt. by Status of offices of current posting.

Sl. No.	Departments	Appointed directly absorbed by Meghalaya Government	On deputation from other Government.	Total
1.	Secretariat	1304 (97.46)	34 (2.54)	1338 (100.00)
2.	Heads of Departments (Shillong.)	1946 (96.72)	66 (3.28)	2012 (100.00)
3.	Other Departments Offices	18457 (92.28)	1544 (7.72)	20001 (100.00)
Total		21707 (92.96)	1644 (7.04)	23351 (100.00)

Table - 27

Distribution of Meghalaya Govt. Employees appointed directly|absorbed by Meghalaya Govt., on deputation from other Governments by District of Posting.

Districts	Appointed directly absorbed by Meghalaya Government	On deputation from other Govt.	Total
1. East Khasi Hills	10,776 (92.66)	854 (7.34)	11630 (100.00)
2. West Khasi Hills	1,557 (92.66)	124 (7.38)	1681 (100.00)
3. Jaintia Hills	2,501 (91.44)	234 (8.56)	2735 (100.00)
4. East Garo Hills	1,540 (96.55)	55 (3.45)	1595 (100.00)
5. West Garo Hills	5,333 (93.40)	377 (6.60)	5710 (100.00)
Total	21,707 (92.96)	1644 (7.04)	23351 (100.00)

N.B. Figures in brackets are percentages to the totals, district-wise.

Table - 28

Classification of Grade IV Employees as on 31st March, 1984.

S1. No.	Grade IV Employees	Secre- tariat	Heads of Deptts. (Shillong)	Dist.& other Offices	Total
1.	Peon Process ver, etc.	302	294	1635	2231
2.	Chowkidars	14	48	1044	1106
3.	Khalasi Fireman Jugali	-	4	538	542
4.	Surveillance Field Workers Soil Con- servarion Field workers.	-	-	224	224
5.	Sweeper	18	14	223	255
6.	Handyman Asstt. Machineman Helper, etc.	-	12	246	258
7.	Mali	-	19	159	178
8.	Cook	-	5	201	206
9.	Bull Pig Poultry Hatchery Attendants	-	-	165	165
10.	Wardboy Girl Male Female Attendant Nursing Orderly' etc.,	-	-	192	192
11.	Asstt. Tractor Opera- tor Asstt. Power Tiller operator Bull-dozer opera- tor etc'	-	-	86	86
12.	Fisherman Boatman River Gd. etc.	-	17	55	72
13.	Duftry	36	19	48	103
14.	Laboratory Boiler Feed milk Chilling Plan Attendants.	-	8	67	75
15.	Potter	-	-	5	5
16.	Water Carrier,	-	2	31	33
17.	Cleaner	20	19	93	132
18.	Gate Keeper	-	-	18	18
19.	Dhobi	-	1	7	8
20.	Perro Printer Blue Printer Gauge reader Form carrier Counter Mazdoor.	-	57	23	80
21.	Liftman Chainman, etc.	5	6	42	53
22.	Rubber Tapper	-	-	1	1
23.	Shoe maker Barber	-	1	2	3
24.	Tailor	-	-	3	3
25.	Interpreter and others	3	93	614	710
26.	Carpenter	-	-	4	4
Total		398	619	5726	6743

Table - 29

District-wise Distribution of Scheduled Tribes in Meghalaya Govt. Service according to status and tenure of Services as on 31st March, 1984.

Status	Tenure of Service	Tribes	Districts					Total
			East Khasi Hills	West Khasi Hills	Jaintia Hills	East Garo Hills	West Garo Hills	
Gazetted	Permanent	Khasi-Jaintia	380	24	62	5	21	492
		Garos	25	-	1	14	77	117
		Other Tribes	29	-	2	3	-	34
	Temporary	Khasi-Jaintia	214	44	97	9	16	380
		Garos	11	2	1	20	44	78
		Other Tribes	9	1	2	3	1	16
Non-Gazetted	Permanent	Khasi-Jaintia	1977	154	323	2	38	2494
		Garos	340	25	5	219	1127	1716
		Other Tribes	48	3	10	9	65	135
	Temporary	Khasi-Jaintia	2918	661	1128	7	267	4981
		Garos	341	38	30	472	1195	2076
		Other Tribes	56	10	42	10	70	188
Grade IV	Permanent	Khasi-Jaintia	522	32	78	-	-	632
		Garos	102	2	-	32	311	447
		Other Tribes	25	2	1	-	44	72
	Temporary	Khasi-Jaintia	1422	322	532	2	4	2282
		Garos	276	31	7	385	653	1353
		Other Tribes	35	5	16	13	52	121
Total			8730	1357	2337	1205	3985	17614

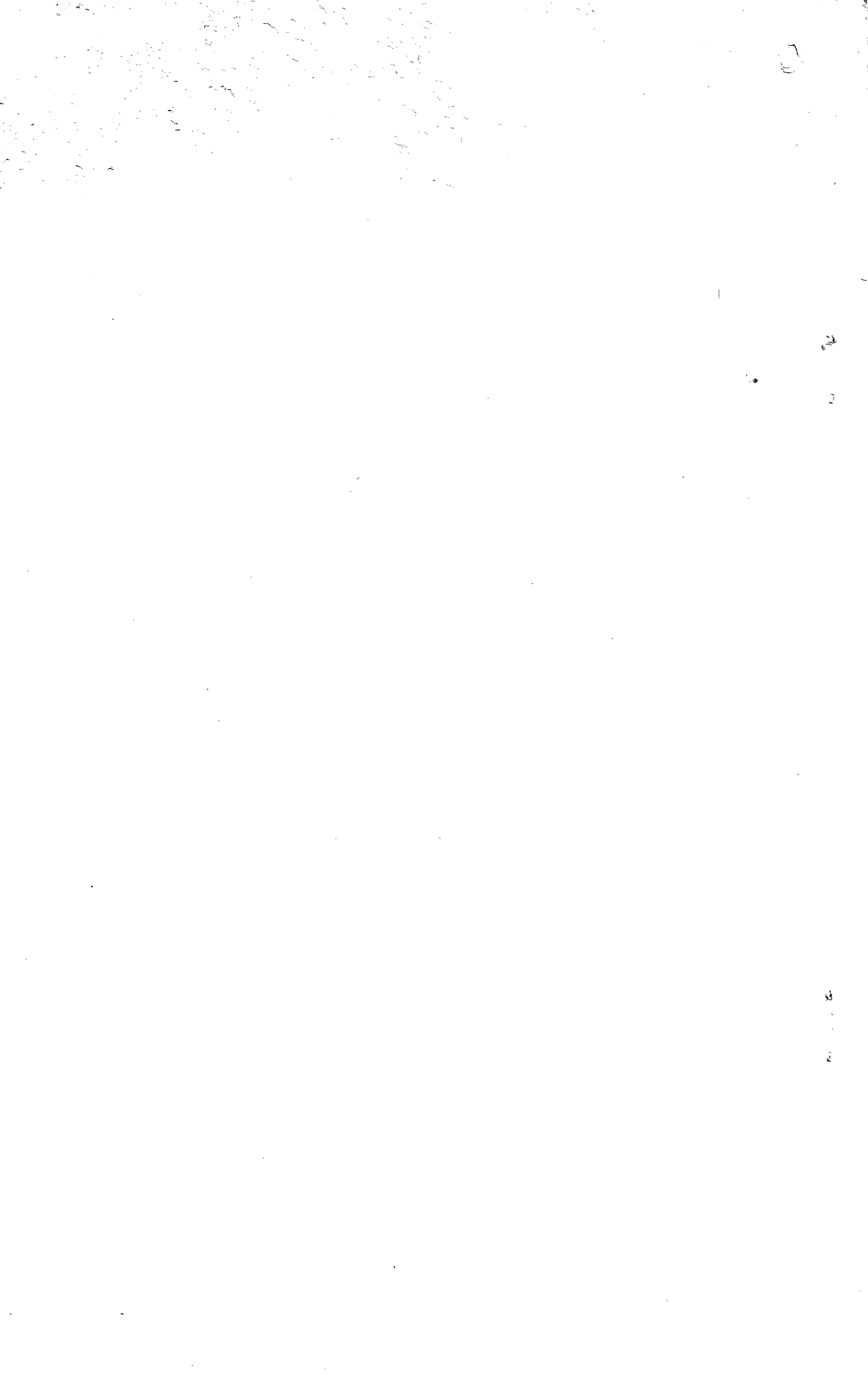
Table - 30

Number of Sanction Posts and number in Position
for the year - 1982, 1983 and 1984 by Departments.

State : Meghalaya

Sl. No.	Departments	1 9 8 2		1 9 8 3		1 9 8 4	
		No. of sanctioned	No. in position	No. of sanctioned	No. in position	No. of sanctioned	No. in position
1.	Accounts	213	207	215	215	218	217
2.	Agriculture	1450	1305	1533	1361	1573	1452
3.	Animal Husbandry & Veterinary	1016	954	993	971	1039	1014
4.	Assembly Secretariat	155	127	175	146	175	141
5.	Boilers & Factories Inspectorate	11	10	11	10	11	10
6.	Border Area Development	90	96	90	93	91	90
7.	Civil Defence & Home Guards & Civil Task Force	988	172	1000	176	1008	240
8.	Community Development	819	782	815	789	857	800
9.	Co-operation	236	233	243	237	244	243
10.	Economics, Statistics & Evaluation	177	177	184	183	189	179
11.	Education including Technical Education & N.C.C.	1479	1461	1542	1542	1621	1598
12.	Election	251	272	194	190	187	186
13.	Electricity Inspectorate	23	20	23	21	23	21
14.	Employment Services	145	134	147	133	147	133
15.	Excise	183	180	183	181	188	187
16.	Fisheries	217	194	227	221	239	218
17.	Forests	892	840	910	870	854	818
18.	General Administration including D.C.'s offices, Meghalaya Houses, etc.	658	640	676	653	694	676
19.	Geology & Mining	178	149	182	156	210	160
20.	Government Press	392	392	392	392	393	392
21.	Governor's Secretariat	-	-	-	-	-	-

Sl. Departments No.	1 9 8 2		1 9 8 3		1 9 8 4	
	No. of sanc- tioned	No. in posi- tion	No. of sanc- tioned	No. in posi- tion	No. of sanc- tioned	No. in posi- tion
22. Health	2537	2404	2579	2441	2640	2488
23. Housing & Town Planning	90	85	91	89	92	90
24. Industries	361	300	376	330	401	645
25. Informa- tion & Pu- blic Rela- tion	119	118	120	119	120	120
26. Jail	35	33	35	33	35	34
27. Juducial including High Court	97	93	95	90	99	95
28. Labour	37	34	37	35	37	35
29. Land Records & Survey	285	256	362	272	368	283
30. Police	3044	3048	4038	3931	4043	3826
31. Public Health En- gineering	976	891	1065	972	1141	1042
32. Public Ser- vice Commi- ssion	46	49	46	49	56	56
33. Public Works	2673	2514	2778	2620	2855	2726
34. Secreta- riat & Planning	1299	1285	1289	1274	1343	1338
35. Sericulture & Weaving	468	430	484	443	493	456
36. Small Sa- vings	4	4	5	5	5	5
37. Social Wel- fare	148	148	149	149	158	158
38. Soil Con- servation	672	649	231	844	1018	852
39. Stationery & Stores	26	26	26	25	27	27
40. Supply & Trade	192	189	194	186	197	185
41. Taxation	120	128	137	143	157	156
42. Tourism	69	53	70	59	70	61
43. Transport	114	116	114	120	127	123
44. Weight & Measures	62	61	62	61	62	61
45. Finance	14	11	19	11	19	14
Total	23057	21270	24837	22841	25524	23351





1989

COVER PRINTED AT THE DIRECTORATE OF PRINTING AND STATIONERY (PRESS WING)
MEGHALAYA, SHILLONG